

UNITED STATES  
DEPARTMENT OF THE INTERIOR  
GEOLOGICAL SURVEYNM OIL COMMISSION  
Draper DE  
Artesia, NM 88210Form approved:  
Budget Bureau No. 42 R1425

30-005-61271

5. LEASE DESIGNATION AND SERIAL NO.

NM 22059

6. IF INDIAN, ALLOTTEE OR TRIBE NAME

RECEIVED

7. UNIT AGREEMENT NAME

DEC 15 1981

8. FARM OR LEASE NAME

April

9. WELL NO.

2 ARTESIA OFFICE

10. FIELD AND POOL OR WILDCAT

X Undesignated ABO

11. SEC., T., R., M., OR BLK.  
AND SURVEY OR AREA

27-8S-22E

12. COUNTY OR PARISH

Chaves

13. STATE

N.M.

1a. TYPE OF WORK

DRILL ☒DEEPEN ☐PLUG BACK ☐

b. TYPE OF WELL

OIL  
WELL ☐GAS  
WELL ☒

OTHER

SINGLE  
ZONE ☒MULTIPLE  
ZONE ☐

2. NAME OF OPERATOR

McKAY OIL CORPORATION

3. ADDRESS OF OPERATOR

P.O. Box 2014, Roswell, New Mexico 88201

4. LOCATION OF WELL (Report location clearly and in accordance with any State requirements.)\*

At surface

1980'FSL

1980'FEL

27-8S-22E

At proposed prod. zone

Same

14. DISTANCE IN MILES AND DIRECTION FROM NEAREST TOWN OR POST OFFICE\*

15 Miles Northwest of Roswell, New Mexico

15. DISTANCE FROM PROPOSED\*

LOCATION TO NEAREST  
PROPERTY OR LEASE LINE, FT.  
(Also to nearest drlg. unit line, if any)

3300'

16. NO. OF ACRES IN LEASE

2560

17. NO. OF ACRES ASSIGNED  
TO THIS WELL

160

18. DISTANCE FROM PROPOSED LOCATION\*  
TO NEAREST WELL, DRILLING, COMPLETED,  
OR APPLIED FOR, ON THIS LEASE, FT.

5480'

19. PROPOSED DEPTH

3500'

20. ROTARY OR CABLE TOOLS

Rotary

21. ELEVATIONS (Show whether DF, RT, GR, etc.)

4035 GL

22. APPROX. DATE WORK WILL START\*

December 1, 1981

23.

## PROPOSED CASING AND CEMENTING PROGRAM

SIZE OF HOLE	SIZE OF CASING	WEIGHT PER FOOT	SETTING DEPTH	QUANTITY OF CEMENT
12 1/4"	8 5/8"	24# J55	1500'	Circulate to surface
7 7/8"	4 1/2"	10.5# J55	3500'	300 sx
To isolate water, oil and gas				

Propose to drill 12 1/4" hole to approximately 1500'. Set 8 5/8" surface casing and cement to surface. Install ram type BOP. Test BOP and casing to 1200 psi. Drill 7 7/8" hole to Abo objective. Run 4 1/2" production casing and cement with sufficient cement to isolate fresh water from oil or gas zones. Complete by perforating and stimulating favorable intervals.

Gas is not dedicated.

IN ABOVE SPACE DESCRIBE PROPOSED PROGRAM: If proposal is to deepen or plug back, give data on present productive zone and proposed new productive zone. If proposal is to drill or deepen directionally, give pertinent data on subsurface locations and measured and true vertical depths. Give blowout preventer program, if any.

24.

SIGNED

JERRY W. LONG

TITLE Agent

OIL & GAS  
U.S. GEOLOGICAL SURVEY  
ROSWELL, NEW MEXICO

DATE November 13, 1981

PERMIT NO.

APPROVED

APPROVAL DATE

APPROVED BY

TITLE

DATE

CONDITIONS OF APPROVAL, IF ANY:

DEC 11 1981

JAMES A. GILLHAM  
DISTRICT SUPERVISOR

\*See Instructions On Reverse Side

2494-81

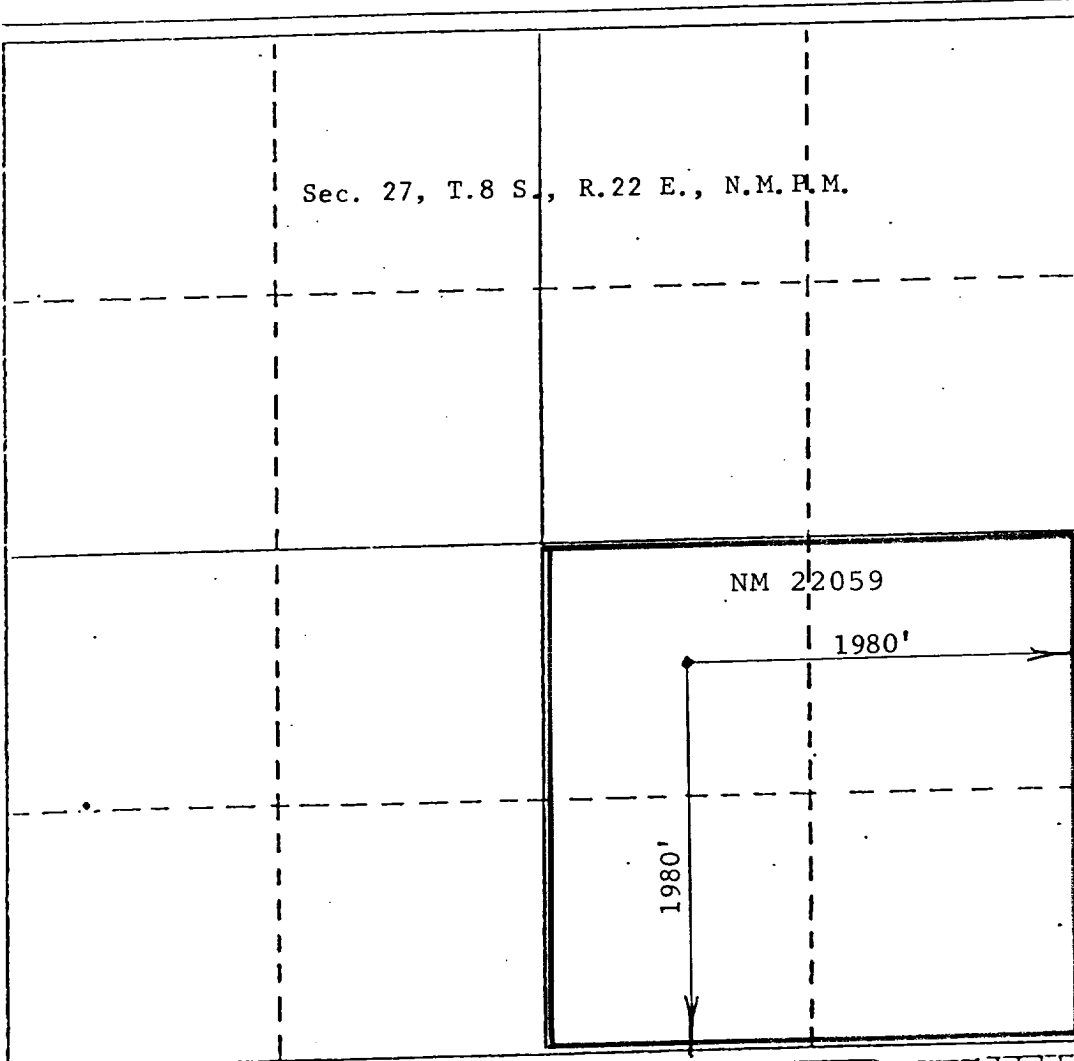
All distances must be from the outer boundaries of the Section.

Operator McKay Oil Corp.		Lease <del>Chaves</del> April		Well No. 2
Unit Letter J	Section 27	Township 8 South	Range 22 East	County Chaves
Actual Postage Location of Well:				
1980 feet from the South line and		1980 feet from the East line		
Ground Level Elev. 4035	Producing Formation Abo	Pool Undesignated	Dedicated Acreage: 160 Acres	

1. Outline the acreage dedicated to the subject well by colored pencil or hatchure marks on the plat below.
2. If more than one lease is dedicated to the well, outline each and identify the ownership thereof (both as to working interest and royalty). Single lease
3. If more than one lease of different ownership is dedicated to the well, have the interests of all owners been consolidated by communitization, unitization, force-pooling, etc?

☐ Yes ☐ No If answer is "yes," type of consolidation \_\_\_\_\_

If answer is "no," list the owners and tract descriptions which have actually been consolidated. (Use reverse side of this form if necessary.) \_\_\_\_\_  
No allowable will be assigned to the well until all interests have been consolidated (by communitization, unitization, forced-pooling, or otherwise) or until a non-standard unit, eliminating such interests, has been approved by the Division.



#### CERTIFICATION

I hereby certify that the information contained herein is true and complete to the best of my knowledge and belief.

*Jerry W. Long*  
Name  
JERRY W. LONG

Position  
Agent

Company  
MCKAY OIL CORPORATION

Date  
November 13, 1981

I hereby certify that the well location shown on this plat was plotted from field notes of actual surveys made by me or under my supervision, and that the same is true and correct to the best of my knowledge and belief.

*John D. Jaquess*  
Date Signed  
November 2, 1981  
Registered Professional Engineer  
and/or Licensed Surveyor  
John D. Jaquess, P.E. & L.S.  
Certificate No. 6290

SUPPLEMENTAL DRILLING DATA

McKAY OIL CORPORATION  
No.2 April  
NW¼SE¼ Sec.27-8S-22E  
Chaves County, N.M.

NM 22059

The following items supplement Form 9-331C in accordance with NTL-6 instructions.

1. SURFACE FORMATION: San Andres
2. ESTIMATED TOPS OF GEOLOGIC MARKERS:

Glorieta	550'
Yeso	750'
Tubb	2150'
Abo	2800'
3. ESTIMATED DEPTHS TO WATER, OIL OR GAS FORMATIONS:

Fresh water	0'-1000'
Gas	2800'-3500'
4. PROPOSED CASING PROGRAM: See Form 9-331C
5. PRESSURE CONTROL EQUIPMENT: Blowout preventer stack will consist of at least a double-ram blowout preventer rated to 3000#WP. A sketch of the BOP is attached.
6. CIRCULATING MEDIUM:

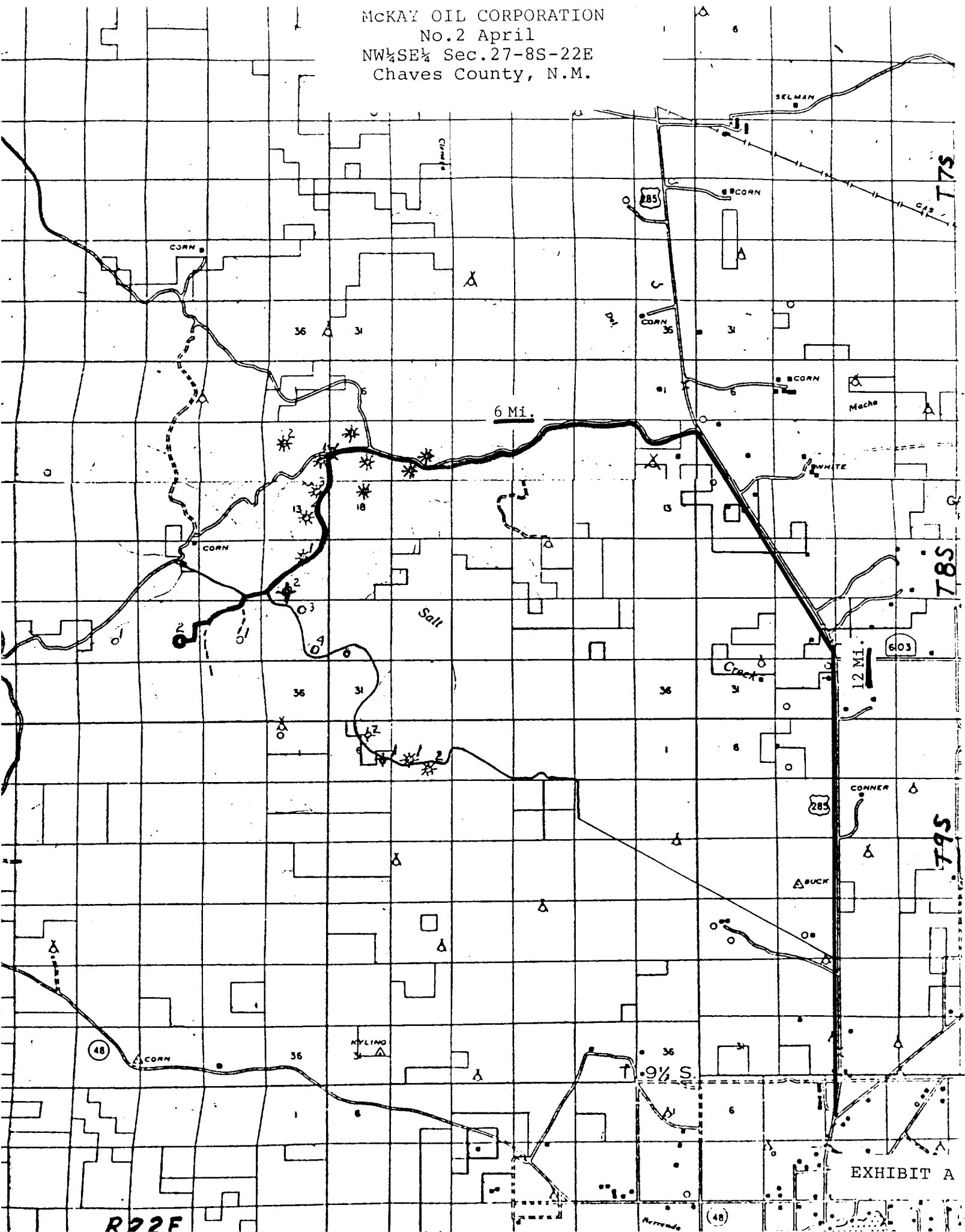
0'-1000'	Fresh water native mud
1000'-1300'	Salt gel mud
1500'-TD	Salt gel and diesel

Mud additives will be used to control water loss.
7. AUXILIARY EQUIPMENT: Full-opening kelly cock, to fit the drill string in use, will be kept on the rig floor at all times.
8. TESTING, LOGGING AND CORING PROGRAM:

Samples:	Catch samples from surface to TD.
DST's:	None
Logging:	GR-CNl from surface to TD.
	FDC from Intermediate casing shoe to TD.
Coring:	None

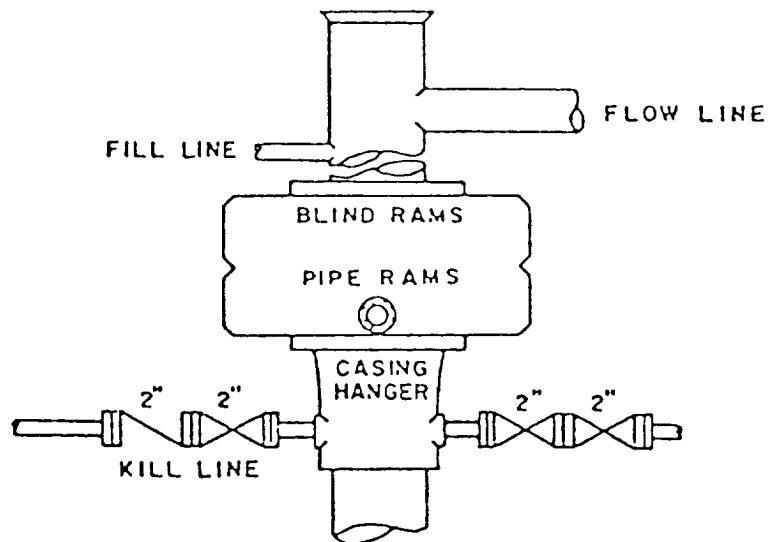
9. ABNORMAL PRESSURES, TEMPERATURES OR HYDROGEN SULFIDE:  
None anticipated. Maximum bottom-hole pressure should not exceed 1500 psi.
10. ANTICIPATED STARTING DATE: Drilling will commence about December 1, 1981 . Drilling should be completed within 10 days. Completion operations (perforations and stimulation) will follow drilling operations.

MCKAY OIL CORPORATION  
No. 2 April  
NW $\frac{1}{4}$ SE $\frac{1}{4}$  Sec. 27-8S-22E  
Chaves County, N.M.



R02F

McKAY OIL CORPORATION  
No.2 April  
NW $\frac{1}{4}$ SE $\frac{1}{4}$  Sec.27-8S-22E  
Chaves County, N.M.



BOP STACK

3000 PSI WORKING PRESSURE