

UNITED STATES  
DEPARTMENT OF THE INTERIOR  
GEOLOGICAL SURVEYSUBMIT IN PLICATE\*  
(Other ins tions on  
reverse side)Form approved.  
Budget Bureau No. 42-R1425.

30-005-61301

## APPLICATION FOR PERMIT TO DRILL, DEEPEN, OR PLUG BACK

## 1a. TYPE OF WORK

DRILL ☒DEEPEN ☐PLUG BACK ☐

## b. TYPE OF WELL

OIL  
WELL ☐GAS  
WELL ☒

OTHER

SINGLE  
ZONE ☒MULTIPLE  
ZONE ☐

## 2. NAME OF OPERATOR

JACK GRYNBERG AND ASSOCIATES ✓

## 3. ADDRESS OF OPERATOR

1050 17th Street - Suite 1950, Denver, Colorado 80202

## 4. LOCATION OF WELL (Report location clearly and in accordance with any State requirements.)\*

At surface

1980' FSL &amp; 660' FEL of Sec. 31, T 5 S - R 24 E

At proposed prod. zone

1980' FSL &amp; 660' FEL of Sec. 31, T 5 S - R 24 E

## 14. DISTANCE IN MILES AND DIRECTION FROM NEAREST TOWN OR POST OFFICE\*

26 Miles NNE of Roswell, New Mexico

## 15. DISTANCE FROM PROPOSED\*

LOCATION TO NEAREST  
PROPERTY OR LEASE LINE, FT. 660'  
(Also to nearest drlg. unit line, if any)

## 18. DISTANCE FROM PROPOSED LOCATION\*

TO NEAREST WELL, DRILLING, COMPLETED,  
OR APPLIED FOR, ON THIS LEASE, FT. Approx.  
15870'

## 16. NO. OF ACRES IN LEASE

560.00

17. NO. OF ACRES ASSIGNED  
TO THIS WELL

160

## 19. PROPOSED DEPTH

4200

## 20. ROTARY OR CABLE TOOLS

Rotary

## 21. ELEVATIONS (Show whether DF, RT, GR, etc.)

4198.1' GR

## 22. APPROX. DATE WORK WILL START\*

December 25, 1981

## 23.

## PROPOSED CASING AND CEMENTING PROGRAM

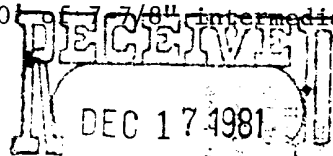
SIZE OF HOLE	SIZE OF CASING	WEIGHT PER FOOT	SETTING DEPTH	QUANTITY OF CEMENT
13-1/2"	10-3/4"	32.75	900'	good returns to surface
7-7/8"	4-1/2"	10.75	300-4200'	500' above top of pay

1. Spud well, drill 13-1/2" hole to 900', run 10-3/4" surface casing.
2. Drill 7-7/8" hole to 4200', checking B.O.P. Daily.
3. Run tests and logs as needed.
4. Run 4-1/2" production casing to 4200' if warranted.
5. Perforate and stimulate as needed.

In the event that circulation is lost while drilling 7-7/8" hole and intermediate casing is needed, the hole will be reamed and 1500' of 7-7/8" intermediate casing will be set.

B.O.P. Diagram Attached - Exhibit "A"

Gas is not dedicated.

Postal ID-1  
API + NL Book  
12-31-81

IN ABOVE SPACE DESCRIBE PROPOSED PROGRAM: If proposal is to deepen or plug back, give data on present productive zone and proposed new productive zone. If proposal is to drill or deepen directionally, give pertinent data on subsurface locations and measured and true vertical depths. Give blowout preventer program, if any.

24.

SIGNED

LAND MANAGER

DATE

December 16, 1981

(This space for Federal or State Office use)

PERMIT NO.

APPROVAL DATE

APPROVED BY

TITLE

DATE

CONDITIONS OF APPROVAL, IF ANY:

DEC 22 1981

JAMES A. GILLHAM  
DISTRICT SUPERVISOR

\*See Instructions On Reverse Side

W MEXICO OIL CONSERVATION COMMISSION  
WELL LOCATION AND ACREAGE DEDICATION PLAT

All distances must be from the corner boundaries of the Section.

Jack Grynberg & Associates		Grynberg <del>and</del> Federal		X 2
Unit Letter: <b>I</b>	Section: <b>31</b>	Township: <b>5-S</b>	Range: <b>24-E</b>	County: <b>Chaves</b>
Actual Footage Location of Well:				
660 feet from the <b>EAST</b> line and		1980 feet from the <b>SOUTH</b> line		
Ground Level Elev. <b>4198.1'</b>	Producing Formation <b>Abo</b>	Pool <b>Undesignated Abo</b>	Dedicated Acreage: <b>160</b> Acres	

1. Outline the acreage dedicated to the subject well by colored pencil or hachure marks on the plat below.
2. If more than one lease is dedicated to the well, outline each and identify the ownership thereof (both as to working interest and royalty).
3. If more than one lease of different ownership is dedicated to the well, have the interests of all owners been consolidated by communitization, unitization, force-pooling, etc?

☐ Yes ☐ No If answer is "yes," type of consolidation \_\_\_\_\_

If answer is "no," list the owners and tract descriptions which have actually been consolidated. (Use reverse side of this form if necessary.) \_\_\_\_\_

No allowable will be assigned to the well until all interests have been consolidated (by communitization, unitization, forced-pooling, or otherwise) or until a non-standard unit, eliminating such interests, has been approved by the Commission.

CERTIFICATION

I hereby certify that the information contained herein is true and complete to the best of my knowledge and belief.

Name

Agent

Position

Jack Grynberg & Associates

Company

12-16-81

Date

I hereby certify that the well location shown on this plat was plotted from field notes of actual surveys made by me or under my supervision, and that the same is true and correct to the best of my knowledge and belief.

15 December 1981

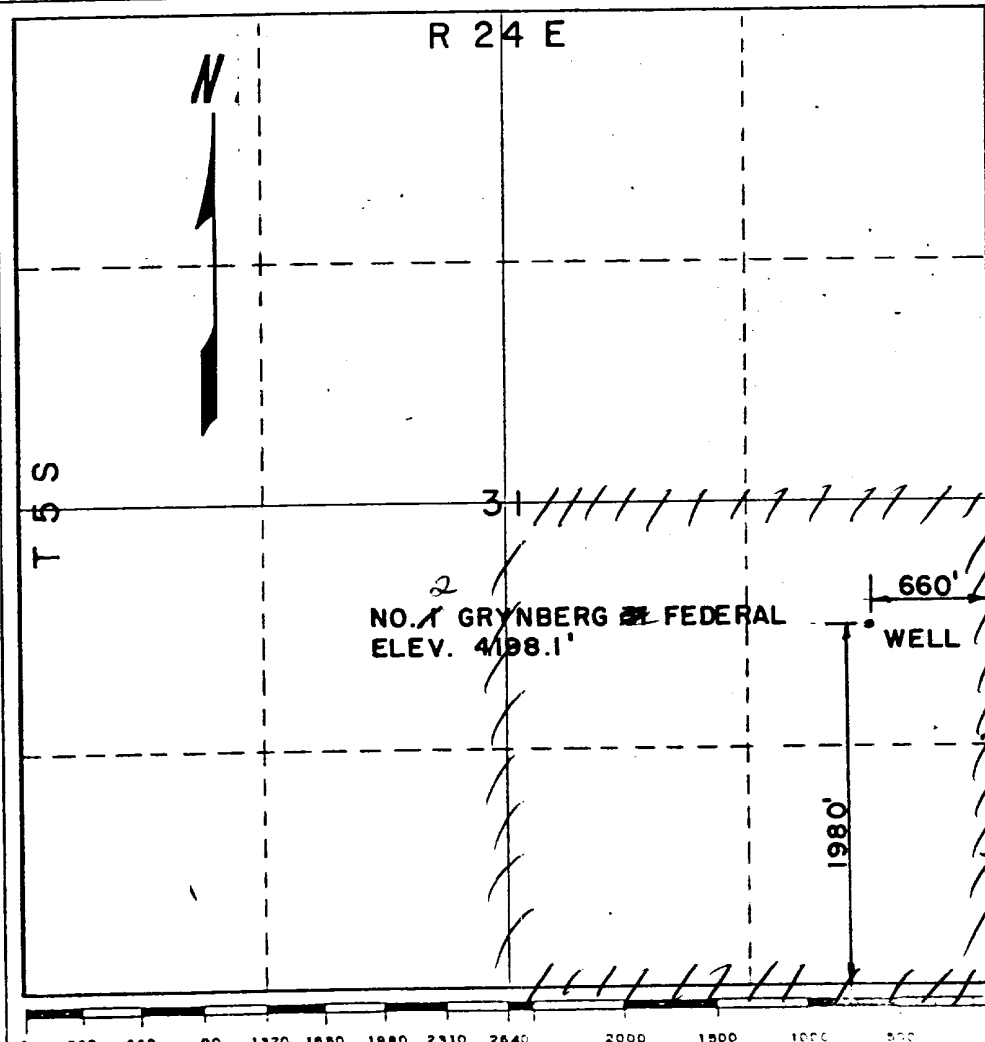
Deputy Surveyor

Registered Professional Engineer and/or Land Surveyor

Thomas T. Mann, P.E. & L.S.

N.M. License No. 277

Certificate No.



TEN POIN COMPLIANCE PROGRAM  
Attachment to Form 9-133C, Application for Permit to Drill

Jack Grynberg and Associates  
#1 Grynberg 31 Federal  
1980' FSL & 660' FEL  
Section 31, T 5 S - R 24 E  
Chaves County, New Mexico

1. Geologic Surface Formation  
Sandy residuum

2. Estimated Tops of Important Geologic Marker
- |            |       |
|------------|-------|
| San Andres | 550'  |
| Glorieta   | 1400' |
| ABO        | 3600' |
| TD         | 4200' |

3. Estimated Depths of Anticipated Water, Oil, Gas or Other Minerals  
Gas 3600 - 4200

4. Proposed Casing Program

<u>HOLE SIZE</u>	<u>CASING SIZE</u>	<u>INTERVAL</u>	<u>GRADE</u>	<u>WT./FT.</u>	<u>NEW OR USED</u>
13 1/2"	10 3/4"	0-900	H-40	32.75	new
7 7/8"	4 1/2"	900-4200	J-55	10.75	new
9 1/4"(Contingency)	7 7/8"	900-1500	K-55	26.40	new

5. Operator's Minimum Specifications For Pressure Control

Exhibit "A" is a schematic diagram of the blowout preventor equipment. The BOP's will be hydraulically tested to the full working pressure after nipping up and after any use under pressure. Pipe rams will be operationally checked each 24 hour period, as will blind rams each time pipe is pulled out of the hole.

6. Type and Characteristic of Proposed Circulating Mediums

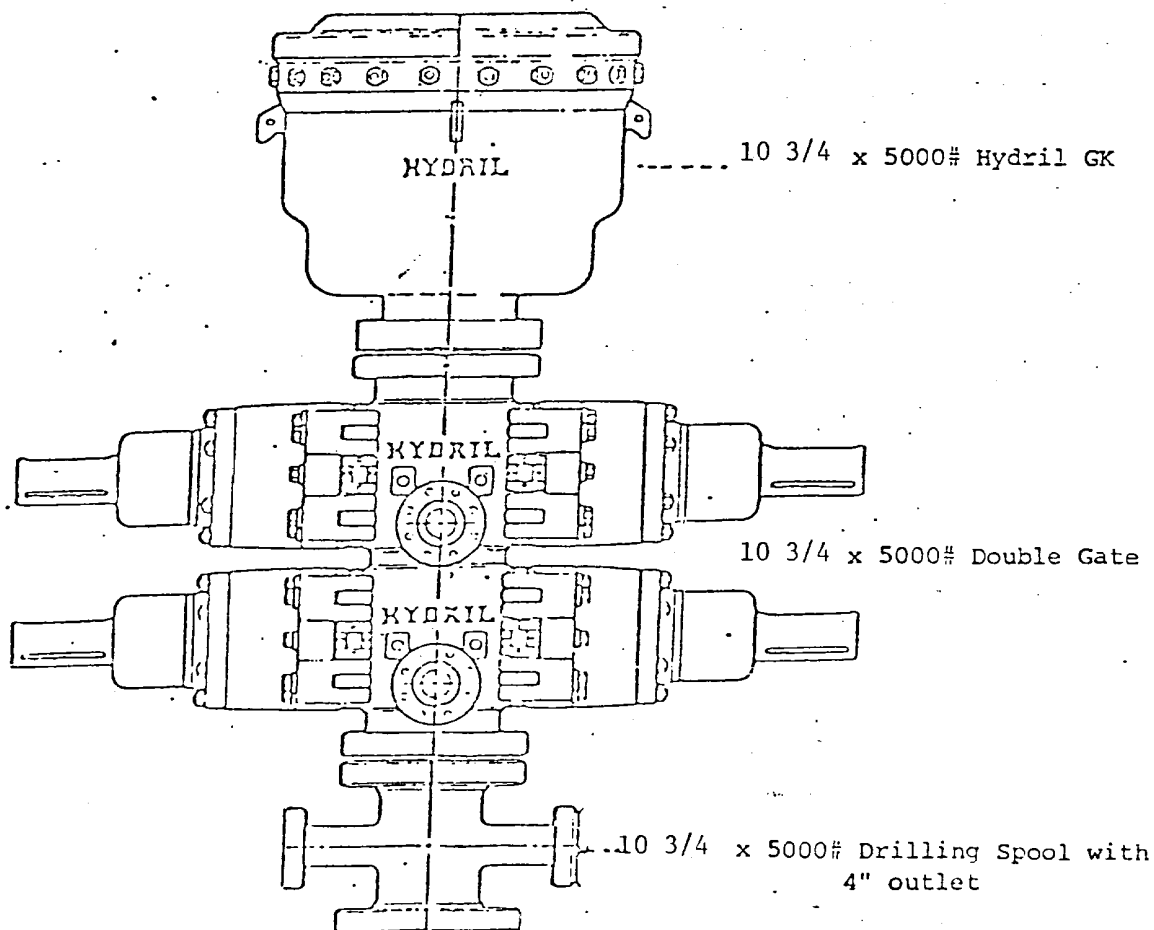
Adequate stocks of sorptive agents will be on site to handle possible spills of fuel and oil on the surface. Heavier muds will be on location to be added if pressure requires.

<u>INTERVAL</u>	<u>TYPE</u>	<u>WEIGHT #/GAL</u>	<u>VISC.-SEC./QT.</u>	<u>FLUID LOSS-CC</u>
0-900	native mud	-----	-----	-----
900-3200	native mud	-----	-----	-----
3200-TD	salt base 4-5% diesel fuel	10.2	32-40	20-30CC Wtr.

7. Auxiliary Equipment  
Kelly cock, a float will be used at the bit, pit level indicators and flow sensor equipment, sub with full-opening valve on floor, drill pipe connection.
8. Testing, Logging, and Coring Program
  - A. DST's as warranted.
  - B. The logging program will consist of a CNL-FDC and Dual Lateral Log-MSFL.
  - C. No coring is anticipated
  - D. Stimulation procedures will be determined after evaluation of logs.  
If treatment is indicated, appropriate Sundry Notice will be submitted.
9. Anticipated Abnormal Pressures or Temperatures  
No abnormal pressures or temperatures are anticipated.
10. The well will be spudded around December 25, 1981 or as soon as permit and surface use program are approved by the USGS and BLM.

EXHIBIT "A"  
Jack Grynberg and Associates  
#1 Grynberg 31 Federal  
1980' FSL and 660' FEL  
Sec. 31, T 5 S - R 24 E  
Chaves County, New Mexico

## B.O.P. Stack



All items H<sub>2</sub>S trimmed

EXHIBIT "B"  
Jack Grynberg and Associates  
#1 Grynberg 31 Federal  
1980' FSL and 660' FEL  
Sec. 31, T 5 S - R 24 E  
Chaves County, New Mexico

