

NE MEXICO OIL CONSERVATION COMMISSION
WELL LOCATION AND ACREAGE DEDICATION PLAT

Form C-102
Supersedes C-128
Effective 1-1-55

All distances must be from the outer boundaries of the Section

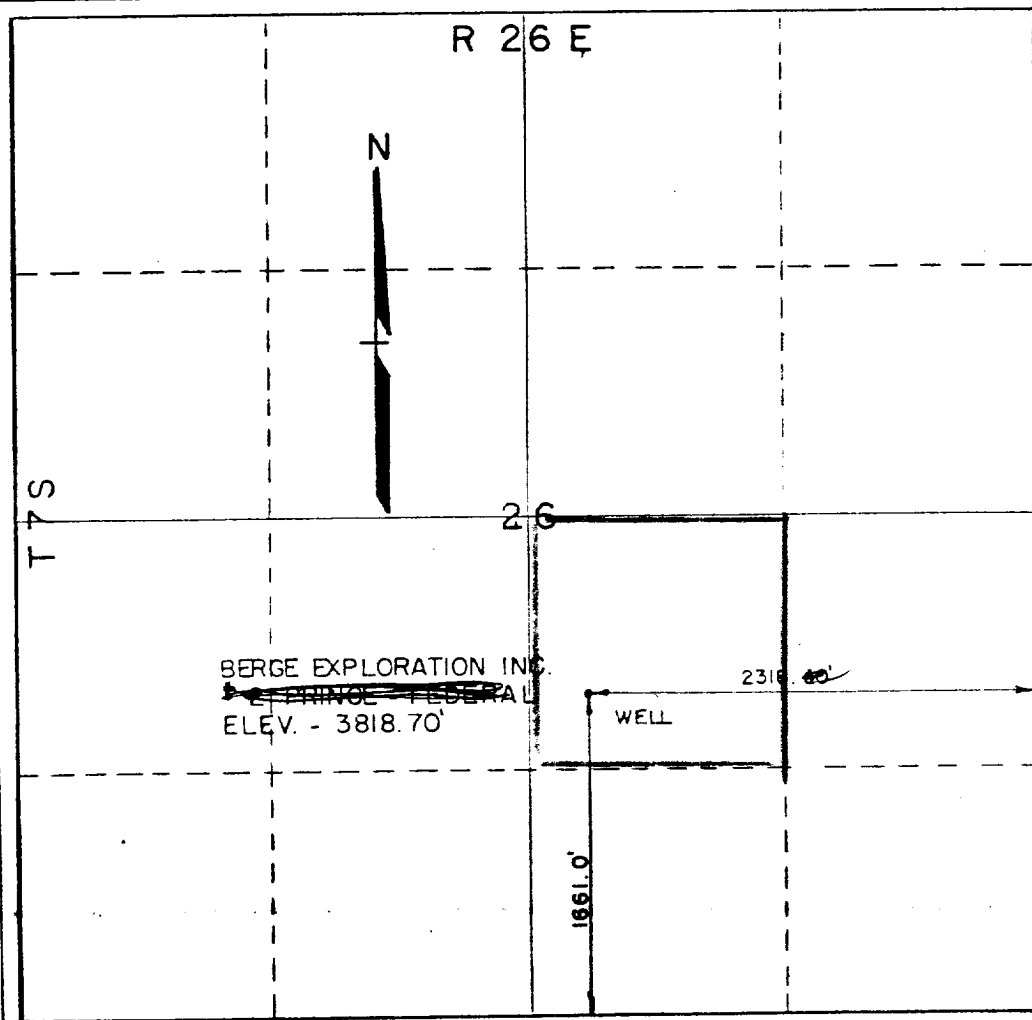
Operator Berge Exploration, Inc.		Lease Fed. NH 067811A Dale Federal		Well No. Prince No. 2 Fed.
Unit Letter J	Section 26	Township 7-S	Range 26-E	County Chaves
Actual Footage Location of Well: 2318.40 feet from the EAST line and 1661 feet from the SOUTH line				
Ground Level Elev. 3818.70	Producing Formation San Andres	Pool Leslie Spring - San Andres	Dedicated Acreage: 20 40 Acres	

1. Outline the acreage dedicated to the subject well by colored pencil or hachure marks on the plat below.
2. If more than one lease is dedicated to the well, outline each and identify the ownership thereof (both as to working interest and royalty).
3. If more than one lease of different ownership is dedicated to the well, have the interests of all owners been consolidated by communitization, unitization, force-pooling, etc?

☐ Yes ☐ No If answer is "yes," type of consolidation N/A

If answer is "no," list the owners and tract descriptions which have actually been consolidated. (Use reverse side of this form if necessary.)

No allowable will be assigned to the well until all interests have been consolidated (by communitization, unitization, forced-pooling, or otherwise) or until a non-standard unit, eliminating such interests, has been approved by the Commission.



CERTIFICATION

I hereby certify that the information contained herein is true and complete to the best of my knowledge and belief.

Verne P. Berry
Name
Vice President
Position
Berge Exploration Inc.
Company
Nov. 6, 1981
Date

I hereby certify that the well location shown on this plat was plotted from field notes of actual surveys made by me or under my supervision, and that the same is true and correct to the best of my knowledge and belief.

October 26, 1981

Thomas T. Mann
Date Surveyed
Registered Professional Engineer
and/or Land Surveyor
Thomas T. Mann, P.E. & L.S.
N.M. License No. 277
Certificate No.