

UNITED STATES
DEPARTMENT OF THE INTERIOR
GEOLOGICAL SURVEY

SUBMIT IN TRIPLICATE*

(Other instructions on
reverse side)Form approved.
Budget Bureau No. 42-R1425.

30-005-61319

APPLICATION FOR PERMIT TO DRILL, DEEPEN, OR PLUG BACK

1a. TYPE OF WORK

DRILL ☒DEEPEN ☐PLUG BACK ☐

b. TYPE OF WELL

OIL

☒

GAS

☐

OTHER

SINGLE
ZONE ☒MULTIPLE
ZONE ☐

2. NAME OF OPERATOR

Berge Exploration, Inc.

3. ADDRESS OF OPERATOR

7100 North Broadway, Suite 2-L, Denver, Colorado

4. LOCATION OF WELL (Report location clearly and in accordance with any State requirements.)*

At surface

330' from west line and 1650' from south line
At proposed prod. zone
same

14. DISTANCE IN MILES AND DIRECTION FROM NEAREST TOWN OR POST OFFICE*

30 miles northeast of Roswell, New Mexico

O. C. D.

ARTESIA, OFFICE

15. DISTANCE FROM PROPOSED*

LOCATION TO NEAREST

PROPERTY OR LEASE LINE, FT.

(Also to nearest drilg. unit line, if any)

330'

18. DISTANCE FROM PROPOSED LOCATION*

TO NEAREST WELL, DRILLING, COMPLETED,
OR APPLIED FOR, ON THIS LEASE, FT.

N/A

16. NO. OF ACRES IN LEASE

240

19. PROPOSED DEPTH

1550'

17. NO. OF ACRES ASSIGNED
TO THIS WELL

40

20. ROTARY OR CABLE TOOLS

Cable Tool

21. ELEVATIONS (Show whether DF, BT, GR, etc.)

22. APPROX. DATE WORK WILL START*

Following No.1 Worley

23.

PROPOSED CASING AND CEMENTING PROGRAM

SIZE OF HOLE	SIZE OF CASING	WEIGHT PER FOOT	SETTING DEPTH	QUANTITY OF CEMENT
11"	8 5/8"	32#	900' 200'	Circulate to surface isolate all oil, wtr, & gas zones
6 3/4"	4 1/2"	9.5#	1550'	

1. Drill 900', set 200' of 8 5/8" surface pipe w/ sax cement.
2. Drill to 1550', set 1550' of 4 1/2" casing w/ sufficient cement to isolate zones as indicated, otherwise well will be plugged according to Federal and State regulations.
3. No blowout prevention program is planned.
4. No mud program is planned.

IN ABOVE SPACE DESCRIBE PROPOSED PROGRAM: If proposal is to deepen or plug back, give data on present productive zone and proposed new productive zone. If proposal is to drill or deepen directionally, give pertinent data on subsurface locations and measured and true vertical depths. Give blowout preventer program, if any.

24.

SIGNED

James A. Gillham

TITLE

Vice President

DATE

11/6/81

(This space for Federal or State office use)

PERMIT NO.

APPROVED

APPROVAL DATE

APPROVED BY

AS AMENDED

TITLE

CONDITIONS OF APPROVAL, IF ANY:

DEC 22 1981

DATE

JAMES A. GILLHAM
DISTRICT SUPERVISOR

*See Instructions On Reverse Side

NEW MEXICO OIL CONSERVATION COMMISSION
WELL LOCATION AND ACREAGE DEDICATION PLAT

Form O-1
Revised 1-1-77

All distances must be from the outer boundaries of the Section.

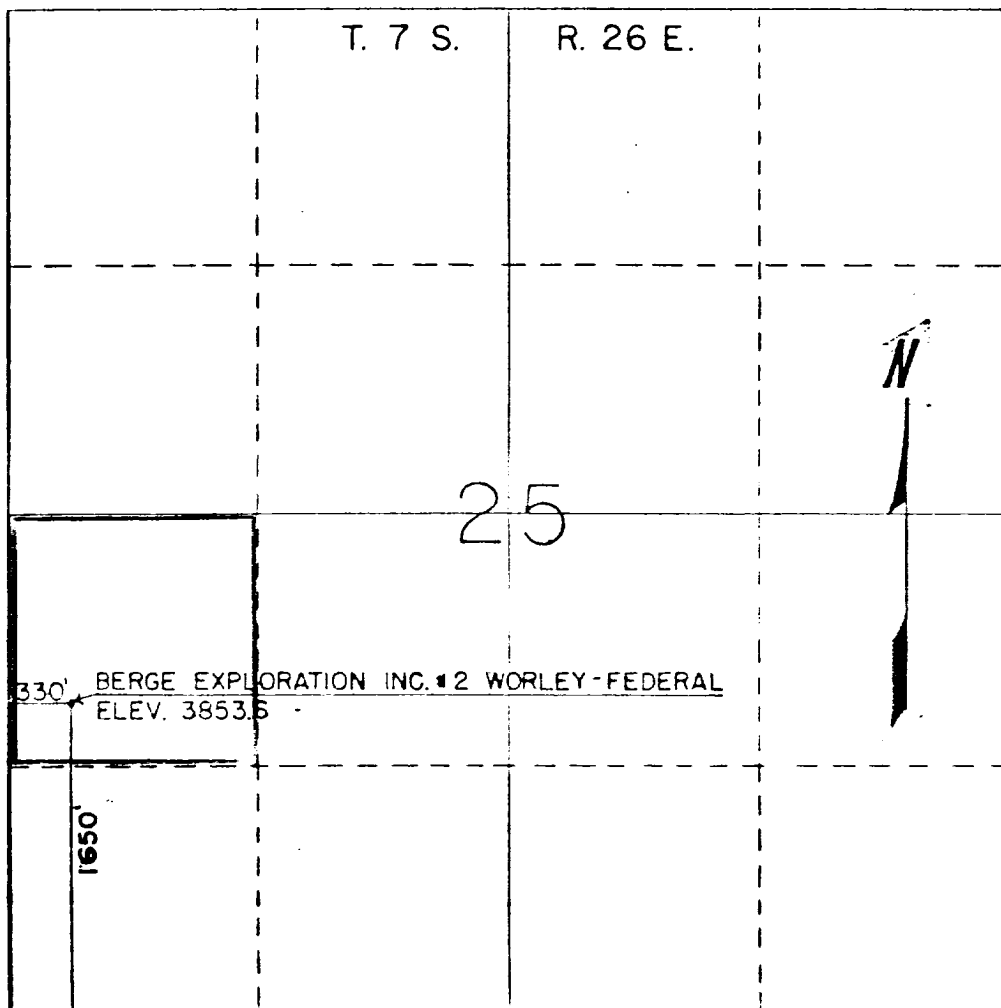
Operator Berge Exploration, Inc.			Lease No. Fed. NM-43714 <i>Worley Federal</i>		Well No. <i>Worley No. 2 - Fed.</i>
Unit Entered L	Section 25	Township 7-S	Range 26-E	County Chaves	
Approx. Easting Location of Well: 330 feet from the WEST line and 1650 feet from the SOUTH line					
Ground Level Elev. 3853.6'	Producing Formation San Andres	Foot Leslie Spring-San Andres		Dedicated Acreage: 40 Acres	

1. Outline the acreage dedicated to the subject well by colored pencil or hachure marks on the plat below.
2. If more than one lease is dedicated to the well, outline each and identify the ownership thereof (both as to working interest and royalty).
3. If more than one lease of different ownership is dedicated to the well, have the interests of all owners been consolidated by communitization, unitization, force-pooling, etc?

☐ Yes ☐ No If answer is "yes," type of consolidation N/A

If answer is "no," list the owners and tract descriptions which have actually been consolidated. (Use reverse side of this form if necessary.) _____

No allowable will be assigned to the well until all interests have been consolidated (by communitization, unitization, forced-pooling, or otherwise) or until a non-standard unit, eliminating such interests, has been approved by the Commission.



CERTIFICATION

I hereby certify that the information contained herein is true and complete to the best of my knowledge and belief.

Don P. Barry
Name
Vice President
Position
Berge Exploration Inc.
Company
11/16/1981
Date

I hereby certify that the well location shown on this plat was plotted from field notes of actual surveys made by me or under my supervision, and that the same is true and correct to the best of my knowledge and belief.

October 26, 1981
Date Surveyed
Thomas T. Mann
Registered Professional Engineer
and/or Land Surveyor
Thomas T. Mann, P.E. & L.S.
N.M. License No. *277*
Certificate No.

NM OIL CON COMMISSION
Drawer DD
Artesia, NM 88210

Form 9-331
Dec. 1973

Form Approved.
Budget Bureau No. 42-R1424

UNITED STATES
DEPARTMENT OF THE INTERIOR
GEOLOGICAL SURVEY

SUNDRY NOTICES AND REPORTS ON WELLS

(Do not use this form for proposals to drill or to deepen or plug back to a different reservoir. Use Form 9-331-C for such proposals.)

1. oil ☒ gas ☐
well well other

2. NAME OF OPERATOR

Berge Exploration, Inc.

3. ADDRESS OF OPERATOR

7100 N. Broadway, 2-L, Denver, CO. 80221

4. LOCATION OF WELL (REPORT LOCATION CLEARLY. See space 17 below.)

AT SURFACE: 330' FWL X 1650' FSL

AT TOP PROD. INTERVAL: (as above)

AT TOTAL DEPTH: 1550' (as above)

16. CHECK APPROPRIATE BOX TO INDICATE NATURE OF NOTICE, REPORT, OR OTHER DATA

REQUEST FOR APPROVAL TO:

TEST WATER SHUT-OFF ☐

FRACTURE TREAT ☐

SHOOT OR ACIDIZE ☐

REPAIR WELL ☐

PULL OR ALTER CASING ☐

MULTIPLE COMPLETE ☐

CHANGE ZONES ☐

ABANDON* ☐

(other) Revised casing program

Supplement to APD

SUBSEQUENT REPORT OF:

☐

☐

☐

☐

☐

☐

☐

☐

☐

5. LEASE
NM-43714

6. IF INDIAN, ALLOTTEE OR TRIBE NAME

RECEIVED

7. UNIT AGREEMENT NAME

8. FARM OR LEASE NAME

Date Federal Worley Federal O.C. D.

9. WELL NO.

No. 2 Worley Fed.

ARTESIA OFFICE

10. FIELD OR WILDCAT NAME

Leslie Spring, San Andres

11. SEC., T., R., M., OR BLK. AND SURVEY OR

AREA
Sec. 25, T 7S, R 26E

12. COUNTY OR PARISH

Chaves

13. STATE

New Mexico

14. API NO.

15. ELEVATIONS (SHOW DF, KDB, AND WD)

3853.6 GL

(NOTE: Report results of multiple completion or zone change on Form 9-330.)

17. DESCRIBE PROPOSED OR COMPLETED OPERATIONS (Clearly state all pertinent details, and give pertinent dates, including estimated date of starting any proposed work. If well is directionally drilled, give subsurface locations and measured and true vertical depths for all markers and zones pertinent to this work.)*

Run 8 5/8 sfc csg to 200' circ. cement

Run 4 1/2 prod csg to TD circ cement

Subsurface Safety Valve: Manu. and Type NA Set @ Ft.

18. I hereby certify that the foregoing is true and correct

SIGNED Herne P. Berry TITLE Vice President DATE Nov. 20, 1981

(This space for Federal or State office use)

APPROVED BY _____ TITLE _____ DATE _____
CONDITIONS OF APPROVAL, IF ANY:

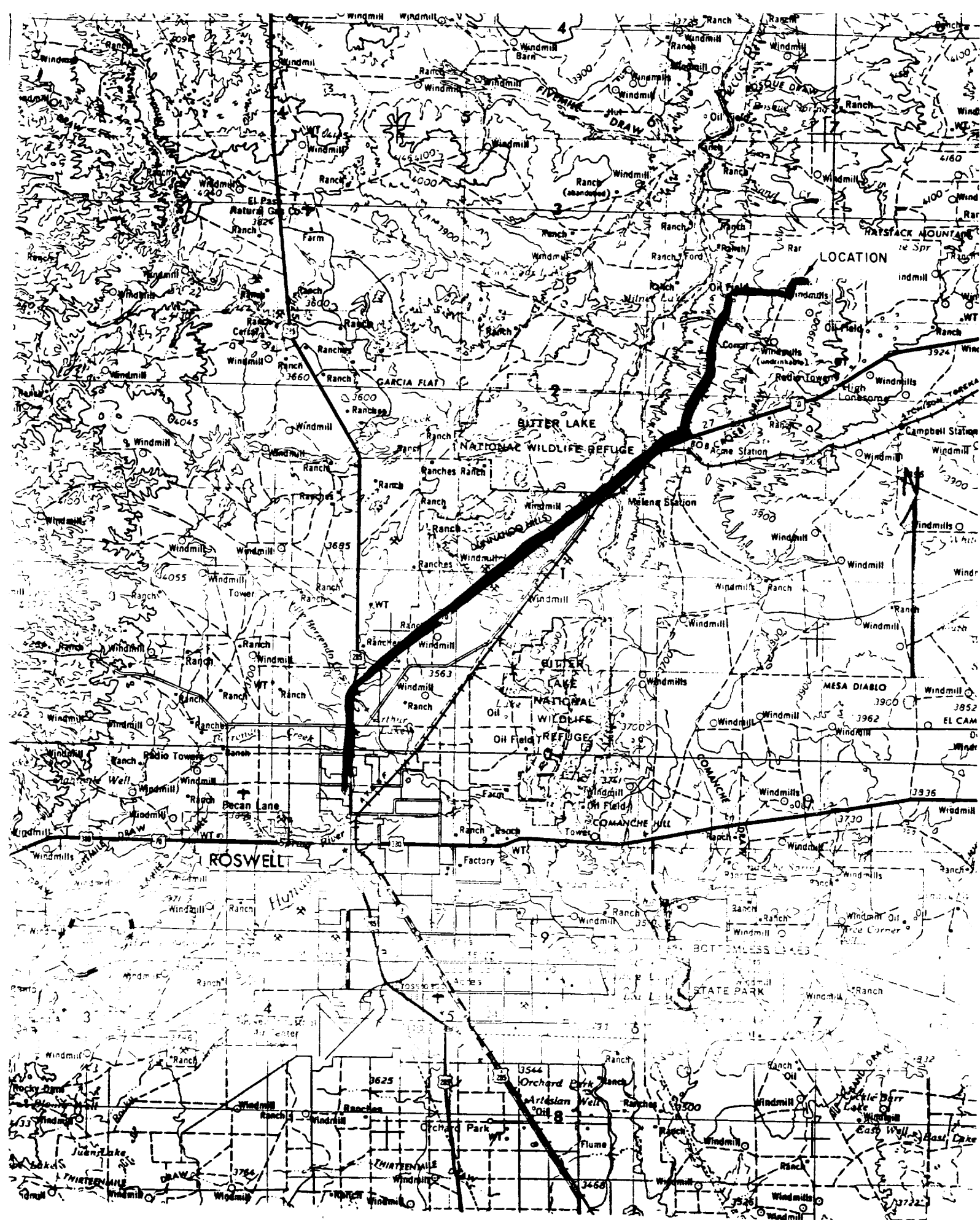


EXHIBIT A. ROUTE TO HILL CITY

Phone 303-426-1086

Berge Exploration, Inc.
No. 2 Worley-Federal
330 ft FWL & 1650 Ft FSL
Sec. 25, T. 7 S, R. 26 E
Chaves County
New Mexico

In conjunction with form 9-331 C the following information is provided for U. S. G. S. requirements.

1. The Geologic surface formation-Queens.
2. The estimated top of geologic marker is as follows: San Andres 995'
3. The estimated depths of anticipated water, oil and gas formations are expected as follows:

Water: 1453' to 1503'
Gas: None except a small amount at 1513' in San Andres
Oil: Approximately 1513' to 1534'
4. Proposed casing program: See Form 9-331 C.
5. Pressure control equipment: None
6. Mud program: None
7. Auxiliary equipment: None
8. Testing, logging and coring program:
Testing-as warranted
Logging-Gamma ray and neutron
Coring-None
9. No abnormal pressures or temperatures are anticipated
10. Anticipated starting date: to follow the drilling of the No. 1 Worley-Federal.