

UNITED STATES  
DEPARTMENT OF THE INTERIOR

## GEOLOGICAL SURVEY

## APPLICATION FOR PERMIT TO DRILL, DEEPEN, OR PLUG BACK

## 1a. TYPE OF WORK

DRILL ☒DEEPEN ☐PLUG BACK ☐

## b. TYPE OF WELL

OIL  
WELL ☐GAS  
WELL ☒

OTHER

SINGLE  
ZONE ☒MULTIPLE  
ZONE ☐

## 2. NAME OF OPERATOR

MESA PETROLEUM CO.

RECEIVED

## 3. ADDRESS OF OPERATOR

1000 Vaughn Bldg./MIDLAND, TEXAS 79701-4493

DEC 30 1981

## 4. LOCATION OF WELL (Report location clearly and in accordance with any State requirements.)\*

At surface

990' FNL &amp; 1980' FEL, NW, NE/4

O. C. D.

At proposed prod. zone

Same

ARTESIA, OFFICE

## 14. DISTANCE IN MILES AND DIRECTION FROM NEAREST TOWN OR POST OFFICE\*

30 Miles North/Northeast of Roswell

## 15. DISTANCE FROM PROPOSED\*

LOCATION TO NEAREST

PROPERTY OR LEASE LINE, FT.

(Also to nearest drlg. unit line, if any)

660'

## 18. DISTANCE FROM PROPOSED LOCATION\*

TO NEAREST WELL, DRILLING, COMPLETED,  
OR APPLIED FOR, ON THIS LEASE, FT.

1300'

## 16. NO. OF ACRES IN LEASE

400.26

## 19. PROPOSED DEPTH

4300'

17. NO. OF ACRES ASSIGNED  
TO THIS WELL

160

## 20. ROTARY OR CABLE TOOLS

ROTARY

## 21. ELEVATIONS (Show whether DF, RT, GR, etc.)

3571.2' GR

## 22. APPROX. DATE WORK WILL START\*

January 6, 1982

## 23.

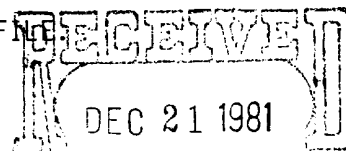
## PROPOSED CASING AND CEMENTING PROGRAM

SIZE OF HOLE	SIZE OF CASING	WEIGHT PER FOOT	SETTING DEPTH	QUANTITY OF CEMENT
17 1/2"	13 3/8"	48#	900'	SURFACE
11" or 12 1/4"	8 5/8"	24#	1600'	ISOLATE WATER, OIL & GAS
7 7/8"	4 1/2"	10.5#	4300'	COVER ALL PAY

Propose to drill 17 1/2" hole to approximately 900' to set 13 3/8" surface casing and cement to surface. Will reduce hole to 11" and drill to approximately 1600' to set 8 5/8" casing. Will nipple up RAM type BOPs, reduce hole to 7 7/8" and drill to total depth. Drilling medium will be air, foam, or mud as required.

~~NOTE: THIS FORM 9-331C IS BEING FILED TO CORRECT THE LOCATION FOOTAGE OF THIS WELL.~~

xc: USGS (6), TLS, CEN RCDS, ACCTG, ROSWELL, MEC, LAND, PARTNERS, FNL



GAS IS DEDICATED.

IN ABOVE SPACE DESCRIBE PROPOSED PROGRAM: If proposal is to deepen or plug back, give data on present productive zone and proposed new productive zone. If proposal is to drill or deepen directionally, give pertinent data on subsurface locations and measured and true vertical depths. Give blowout preventer program, if any.

## 24.

SIGNED

TITLE

REGULATORY COORDINATOR

DATE

12-18-81

(This space for Federal or State office use)

PERMIT NO.

APPROVED

APPROVAL DATE

APPROVED BY

(Orig. Sgd.) ROGER A. CHAPMAN

TITLE

DATE

CONDITIONS OF APPROVAL,

DEC 29 1981

JAMES A. GILLHAM  
DISTRICT SUPERVISOR

\*See Instructions On Reverse Side

Posted ID-1  
API + NL Book  
1-8-82

NEW MEXICO OIL CONSERVATION COMMISSION  
WELL LOCATION AND ACREAGE DEDICATION PLAT

Form C-102  
Supersedes C-128  
Effective 1-1-65

All distances must be from the outer boundaries of the Section

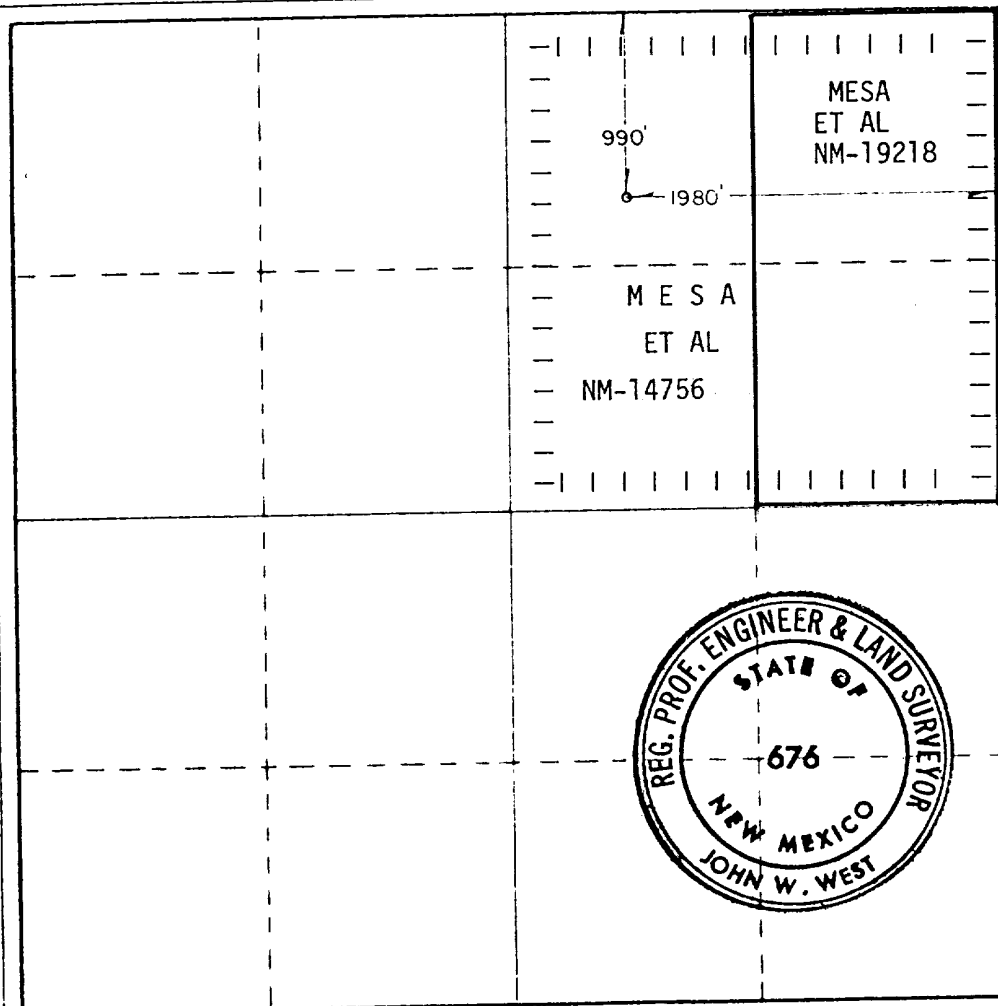
Operator <b>MESA PETROLEUM COMPANY</b>		Lease <b>GERRY FEDERAL COM.</b>		Well No. <b>2</b>
Unit Letter <b>B</b>	Section <b>1</b>	Township <b>8 South</b>	Range <b>25 East</b>	County <b>Chaves</b>
Actual Footage Location of Well: <b>1980</b> feet from the <b>East</b> line and <b>990</b> feet from the <b>North</b> line				
Ground Level Elev. <b>3571.2</b>	Producing Formation <b>ABO</b>	Pool <b>UNDESIGNATED</b>	Dedicated Acreage: <b>NE/4 160</b> Acres	

1. Outline the acreage dedicated to the subject well by colored pencil or hachure marks on the plat below.
2. If more than one lease is dedicated to the well, outline each and identify the ownership thereof (both as to working interest and royalty).
3. If more than one lease of different ownership is dedicated to the well, have the interests of all owners been consolidated by communitization, unitization, force-pooling, etc?

☐ Yes ☐ No If answer is "yes," type of consolidation COMMUNITIZATION IN PROGRESS

If answer is "no," list the owners and tract descriptions which have actually been consolidated. (Use reverse side of this form if necessary.)

No allowable will be assigned to the well until all interests have been consolidated (by communitization, unitization, forced-pooling, or otherwise) or until a non-standard unit, eliminating such interests, has been approved by the Commission.



CERTIFICATION

I hereby certify that the information contained herein is true and complete to the best of my knowledge and belief.

*R. E. Mathis*  
Name

**R. E. Mathis**  
Position

**REGULATORY COORDINATOR**

Company  
**MESA PETROLEUM CO.**

Date  
**12-14-81**

I hereby certify that the well location shown on this plat was plotted from field notes of actual surveys made by me or under my supervision, and that the same is true and correct to the best of my knowledge and belief.

Date Surveyed  
**12/2/81**

Registered Professional Engineer and/or Land Surveyor

*John W. West*

Certificate No. **JOHN W. WEST 676**  
**PATRICK A. ROMERO 6665**  
**Ronald J. Eidson 3239**

0 330 660 990 1320 1650 1980 2310 2640 2000 1500 1000 500

APPLICATION FOR PERMIT TO DRILL

920  
660' MESA PETROLEUM CO.  
GERRY FEDERAL COM #2  
FNL & 1980' FEL, SEC 1, T8S, R25E  
CHAVES COUNTY, NEW MEXICO

LEASE NO. NM-14756

In conjunction with Form 9331-C, Application For Permit to Drill subject well, the following additional information is provided:

1. Applicable portions of the GENERAL REQUIREMENTS FOR OIL AND GAS OPERATIONS ON FEDERAL LEASES, Roswell District, Geological Survey of September 1, 1980 will be adhered to.
2. Geological markers are estimated as follows:

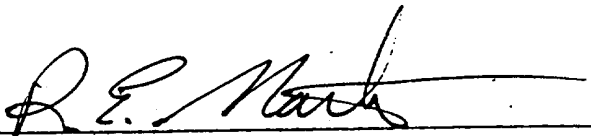
SEVEN RIVERS	Surface
SAN ANDRES	351'
GLORIETA	1313'
TUBB	2897'
ABO	3650'
3. Hydrocarbon bearing strata may occur in the ABO formation(s). No fresh water is expected to be encountered below 900'.
4. The Casing and Blowout Preventer Program will be determined by hole conditions as encountered. See Exhibit VI. Anticipate drilling with air or foam using ram type preventer and rotating head for well control. The 13 3/8" casing will be set at approximately 900' to protect any fresh water zones and cemented to the surface. The 8 5/8" casing will be set at approximately 1600' if water zones have been encountered or omitted if not and ram type preventers installed. Sufficient amounts and kinds of cement would be used to ensure any water, gas, or oil zones encountered are isolated and shut off down to the casing point if run. The 4 1/2" production casing will be set at total depth or shallower depending upon the depth of the deepest commercial hydrocarbon bearing strata encountered.
5. No drill stem test or coring program is planned. The logging program may consist of a GR-CNL from surface total depth and FDC from casing point to total depth.
6. Anticipated drilling time is ten days with completion operations to follow as soon as a completion unit is available.

STANDARD STIPULATIONS FOR ROAD RIGHTS-OF-WAY  
IN THE ROSWELL DISTRICT, BLM

Grantee agrees to comply with the following stipulations to the satisfaction of BLM's Roswell District Manager:

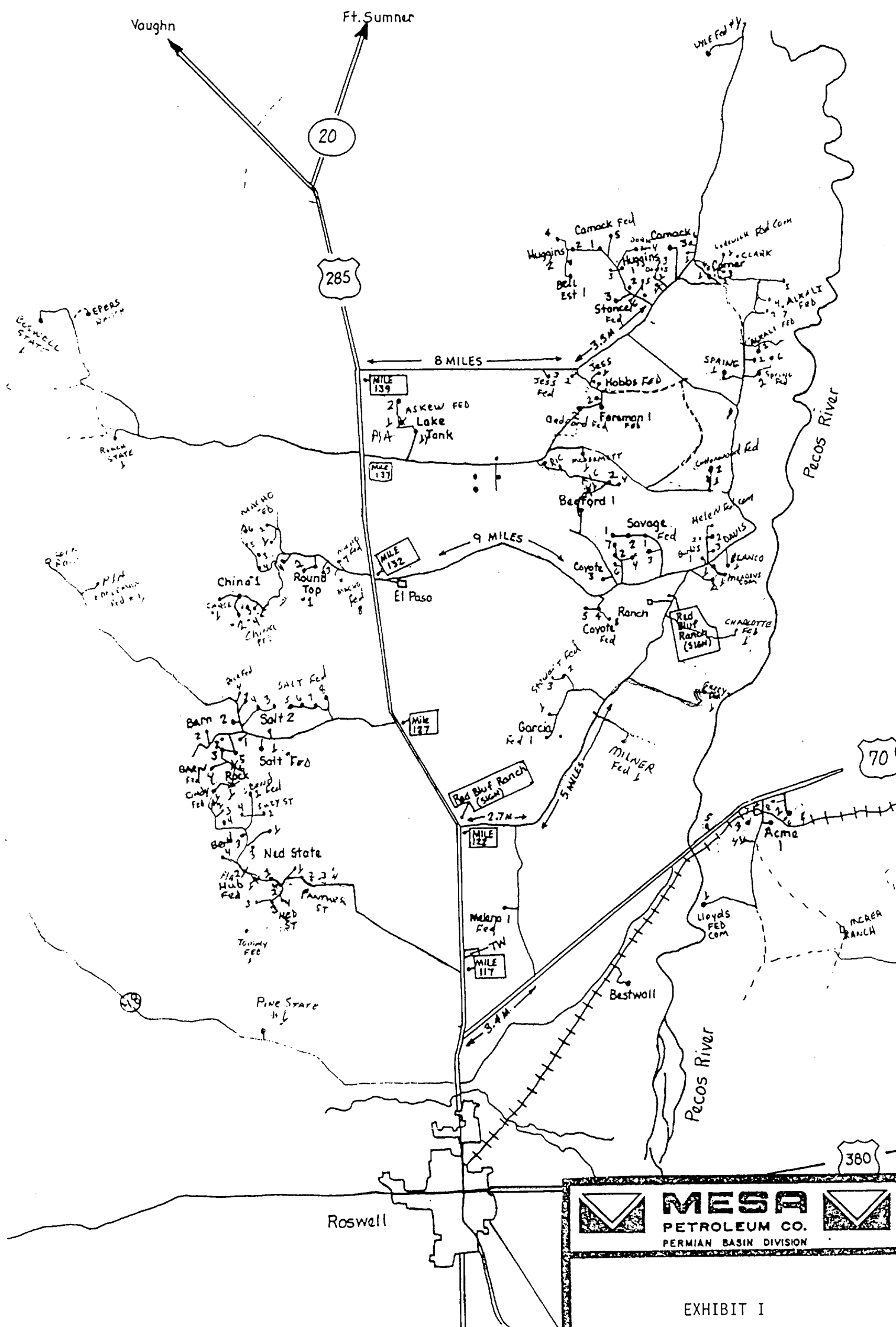
1. Clearing and blading necessary for construction of roads authorized will be held to the absolute minimum. Without prior authorization, these actions will not exceed those limits agreed upon at the pre-construction inspection. Vegetation removed will be "walked-down" in place.
2. Care will be taken by the grantee to assure that scenic values are not damaged in the disposal of waste materials. Any large rocks which are left in the area as a result of construction activities will be placed so that they do not detract from the scenic view and do not hinder the movement of livestock or of big game animals. These residual rocks will not be piled or left in rows.
3. In those areas where erosion control structures are required to stabilize soil conditions, the grantee will install such structures as are suitable for the specific soil conditions being encountered and which are in accordance with sound resource management practices.
4. To prevent slacking of fence wire, the grantee will brace and tie-off each existing fence to be crossed, before cutting. During construction, the opening will be protected to prevent the escape of livestock. Fences which have been cut during construction will be restored to their original condition, or better, by the grantee. Cattleguards and adjacent gates which are of suitable width will also be installed in any fence where the road constructed is to be regularly traveled.
5. If a natural barrier which is being used for livestock control, is broken during construction, the grantee will adequately fence the area to prevent drift of livestock. Such fencing will be at his own expense.
6. Public access along this right-of-way will not be restricted by the grantee, without specific written approval being granted by BLM's Roswell District Manager. Gates or cattleguards on public lands will not be locked or closed to public use.
7. All roads which are constructed under this grant, must be equal to or better than the local minimum standards. Grantee will be responsible for maintaining these roads in a condition which is acceptable to the BLM's Roswell District Manager.
8. Prior to using any mineral materials, such as caliche or sand and gravel which would be removed from any existing or proposed federal source, authorization must be obtained from the BLM Roswell District Manager or his designated representative.
9. Upon cancellation, relinquishment, or expiration of this right-of-way, the grantee will comply with those abandonment procedures as prescribed by BLM's Roswell District Manager.
10. The grantee will make a diligent effort to contact the BLM grazing permittee or lessee prior to entering the public lands on all grazing allotments.
11. Special stipulations:

BY

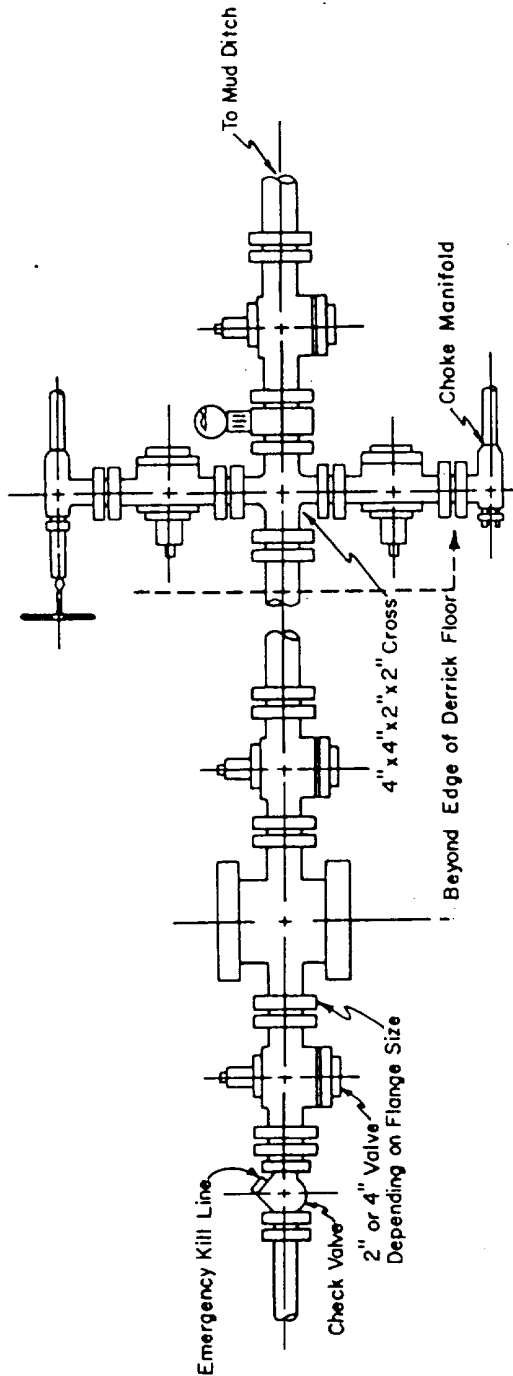


DATE

12-14-81



Blow-out Preventers hydril and choke manifold are all 900 Series

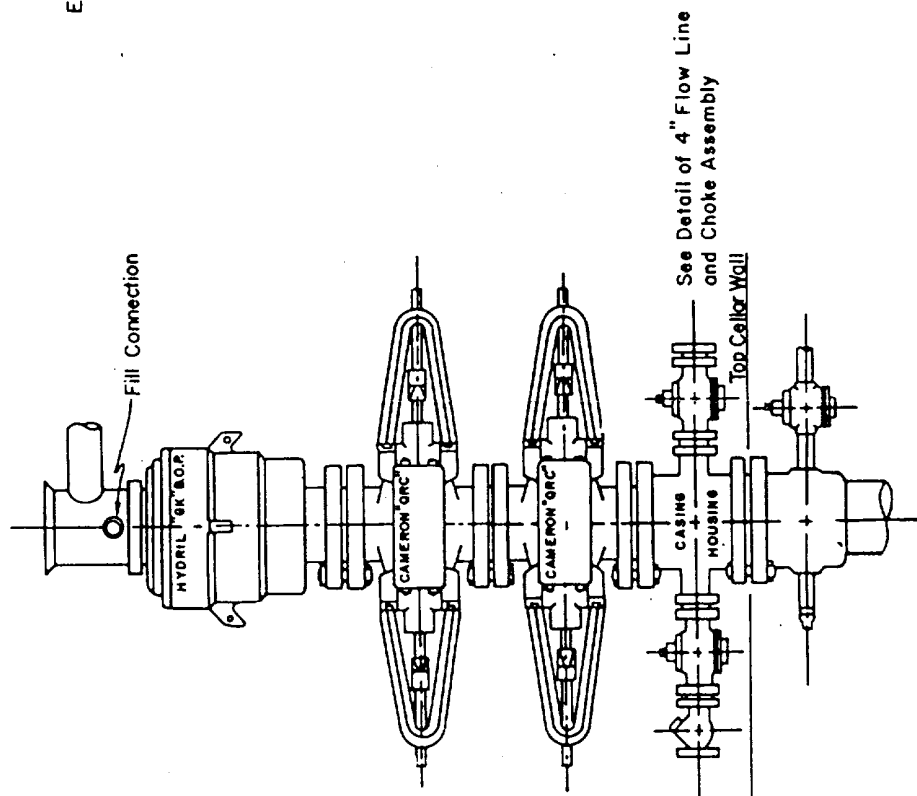


### 3,000 PSI WORKING PRESSURE KILL, CHOKES, AND FILL CONNECTIONS

#### DETAIL OF 4" FLOW LINE CHOKES ASSEMBLY

Minimum assembly for 3,000 PSI working pressure will consist of three preventers.  
The bottom and middle preventers may be Cameron.

NOTE: HYDRIL not installed on shallow-low pressure wells.  
RAM type BOPs are API 10" X 3000 PSI.



### 3,000 PSI WORKING PRESSURE BLOW-OUT PREVENTER HOOK-UP



E X H I B I T  
V I

DATE: \_\_\_\_\_  
SCALE: \_\_\_\_\_