

NEW MEXICO OIL CONSERVATION LOCATION AND ACREAGE DEDICATION PLAT

Supersedes C-128
Effective 1-1-65

All distances must be from the outer boundaries of the Section

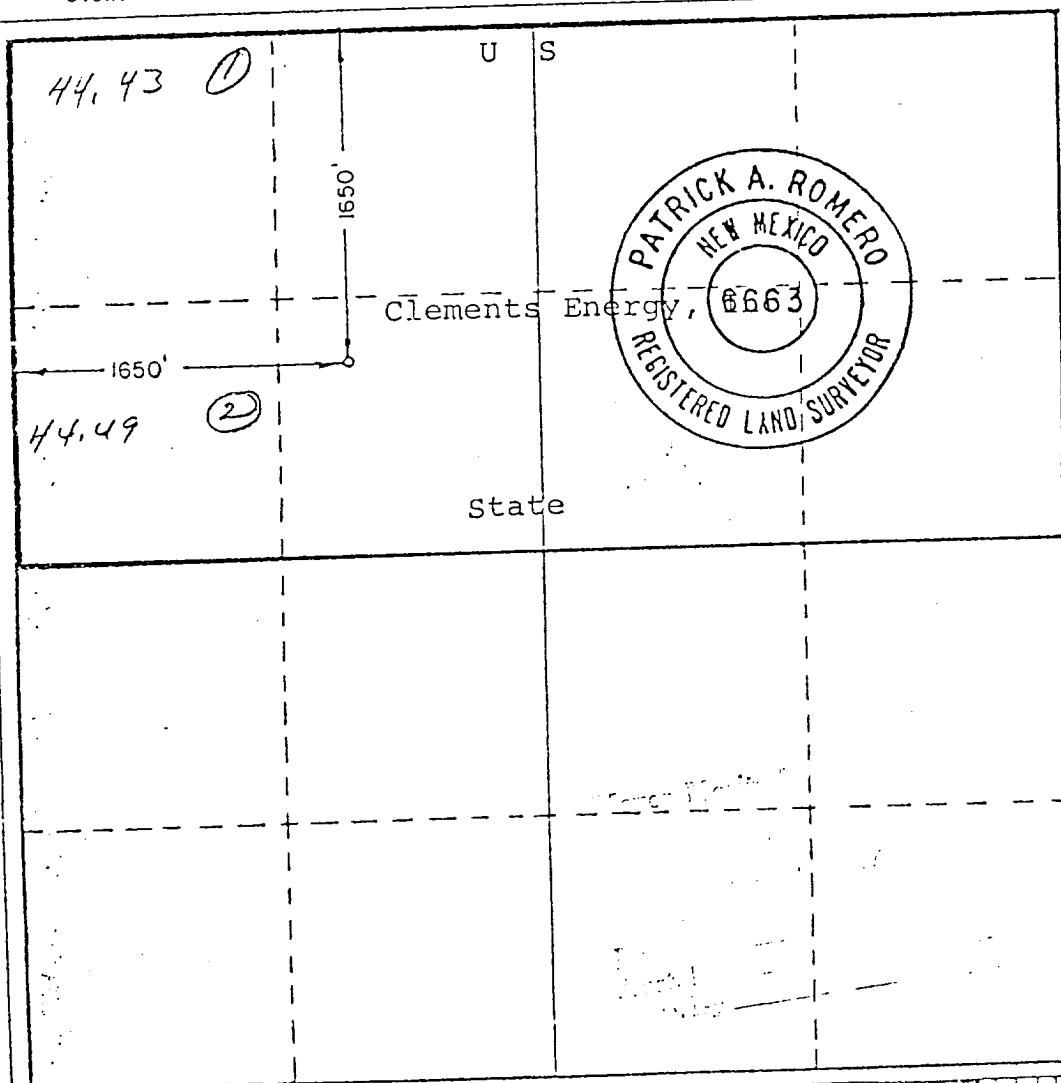
Operator Clements Energy, Inc.		Lease New Mexico State #30		Well No. 1
Unit Letter F	Section 30	Township 14S	Range 28E	County Chaves County
Actual Footage Location of Well: 1650 feet from the North line and 1650 feet from the West line				
Ground Level Elev. 3551.26	Producing Formation Morrow	Pool Buffalo Valley		Dedicated Acreage 328.92320

- Outline the acreage dedicated to the subject well by colored pencil or hatchure marks on the plat below.
- If more than one lease is dedicated to the well, outline each and identify the ownership thereof (both as to working interest and royalty).
- If more than one lease of different ownership is dedicated to the well, have the interests of all owners been consolidated by communitization, unitization, force-pooling, etc?

☒ Yes ☐ No If answer is "yes," type of consolidation Communitization

If answer is "no," list the owners and tract descriptions which have actually been consolidated. (Use reverse side of this form if necessary.)

No allowable will be assigned to the well until all interests have been consolidated (by communitization, unitization, forced-pooling, or otherwise) or until a non-standard unit, eliminating such interests, has been approved by the Commission.



CERTIFICATION

I hereby certify that the information contained herein is true and complete to the best of my knowledge and belief.

Tommy Zachry
Name

Position **Tommy Zachry**
Agent

Company
Clements Energy, Inc.

Date
12-23-81

I hereby certify that the well location shown on this plat was plotted from field notes of actual surveys made by me or under my supervision, and that the same is true and correct to the best of my knowledge and belief.

12/18/81

Date Surveyed

Registered Professional Engineer and/or Land Surveyor

Patrick A. Romero
Certificate No. **JOHN W. WEST 670**
PATRICK A. ROMERO 660
Reginald J. Eidson 323

