

STATE OF NEW MEXICO  
ENERGY AND MINERALS DEPARTMENT

OIL CONSERVATION DIVISION

P. O. BOX 2088

SANTA FE, NEW MEXICO 87505

RECEIVED

JAN 5 1982

O. C. D.  
ARTESIA, OFFICE

30-005-61325

Form C-101  
Revised 10-1-79

NO. OF COPIES RECEIVED	
DISTRIBUTION	
SANTA FE	1
FILE	1
U.S.G.S.	1
LAND OFFICE	1
OPERATOR	1

APPLICATION FOR PERMIT TO DRILL, DEEPEN, OR PLUG BACK

Type of Work

DRILL ☒

DEEPEN ☐

PLUG BACK ☐

Type of Well

OIL WELL ☐

GAS WELL ☒

OTHER

SINGLE ZONE ☐

MULTIPLE ZONE ☐

Name of Operator

Yates Petroleum Corporation

Address of Operator

207 S. 4th, Artesia, New Mexico 88210

Location of Well

UNIT LETTER K

LOCATED 1740

FEET FROM THE South LINE

1980

FEET FROM THE West

LINE OF SEC. 34

TWP. 6S

RGE. 25E

NMPM

5A. Indicate Type of Lease

STATE ☐

FEE ☒

5. State Oil & Gas Lease No.

7. Unit Agreement Name

8. Farm or Lease Name

Finley "RV" Com

9. Well No.

1-Y

10. Field and Pool, or Wildcat

Undesignated Abo

12. County

Chaves

19. Proposed Depth

Approx. 4100'

19A. Formation

Abo

20. Rotary or C.T.

Rotary

Elevations (show whether DF, RL, etc.)

3721 GL

21A. Kind & Status Plug. Bond

Blanket

21B. Drilling Contractor

L&M Drilling Co.

22. Approx. Date Work will start

ASAP

PROPOSED CASING AND CEMENT PROGRAM

SIZE OF HOLE	SIZE OF CASING	WEIGHT PER FOOT	SETTING DEPTH	SACKS OF CEMENT	EST. TOP
12 1/4"	10 3/4"	24# J-55	Approx. 900'	650 sx.	circulated
7/8" or 6 1/4"	4 1/2" or 5 1/2"	10.5# or 15.5#	TD	350 sx.	

We propose to drill and test the Abo and intermediate formations. Approximately 900' of surface casing will be set and cement circulated to shut off gravel and caving. If needed (lost circulation) 7" intermediate casing will be run to 1500' and cemented with enough cement calculated to tie back into the surface casing. Temperature survey will be run to determine cement top. If commercial, production casing will be run and cemented with adequate cover, perforate, and stimulate as needed for production.

MUD PROGRAM: FW gel and LCM to 800', Brine to 3200', Brine & KCL water to TD.

BOP PROGRAM: BOP's will be installed at approximately 900' and tested daily.

GAS NOT DEDICATED.

APPROVAL VALID FOR 180 DAYS  
PERMIT EXPIRES 7-4-82  
UNLESS DRILLING UNDERWAY

\*Location moved 90' south - P&A first hole. Ok'd by Bill Gressett of NMOC, Artesia, NM.

DOVE SPACE DESCRIBE PROPOSED PROGRAM: IF PROPOSAL IS TO DEEPEN OR PLUG BACK, GIVE DATA ON PRESENT PRODUCTIVE ZONE AND PROPOSED NEW PRODUCTIVE ZONE. GIVE BLOWOUT PREVENTER PROGRAM, IF ANY.

by certify that the information above is true and complete to the best of my knowledge and belief.

and Glenis Reed, Title Regulatory Manager, Date 1/4/82

(This space for State Use)

APPROVED BY Mike Williams TITLE OIL AND GAS INSPECTOR DATE JAN 4 1982

CONDITIONS OF APPROVAL, IF ANY:

NEW MEXICO OIL CONSERVATION COMMISSION  
WELL LOCATION AND ACREAGE DEDICATION PLAT

Form C-102  
Supersedes C-128  
Effective 1-1-65

All distances must be from the outer boundaries of the Section.

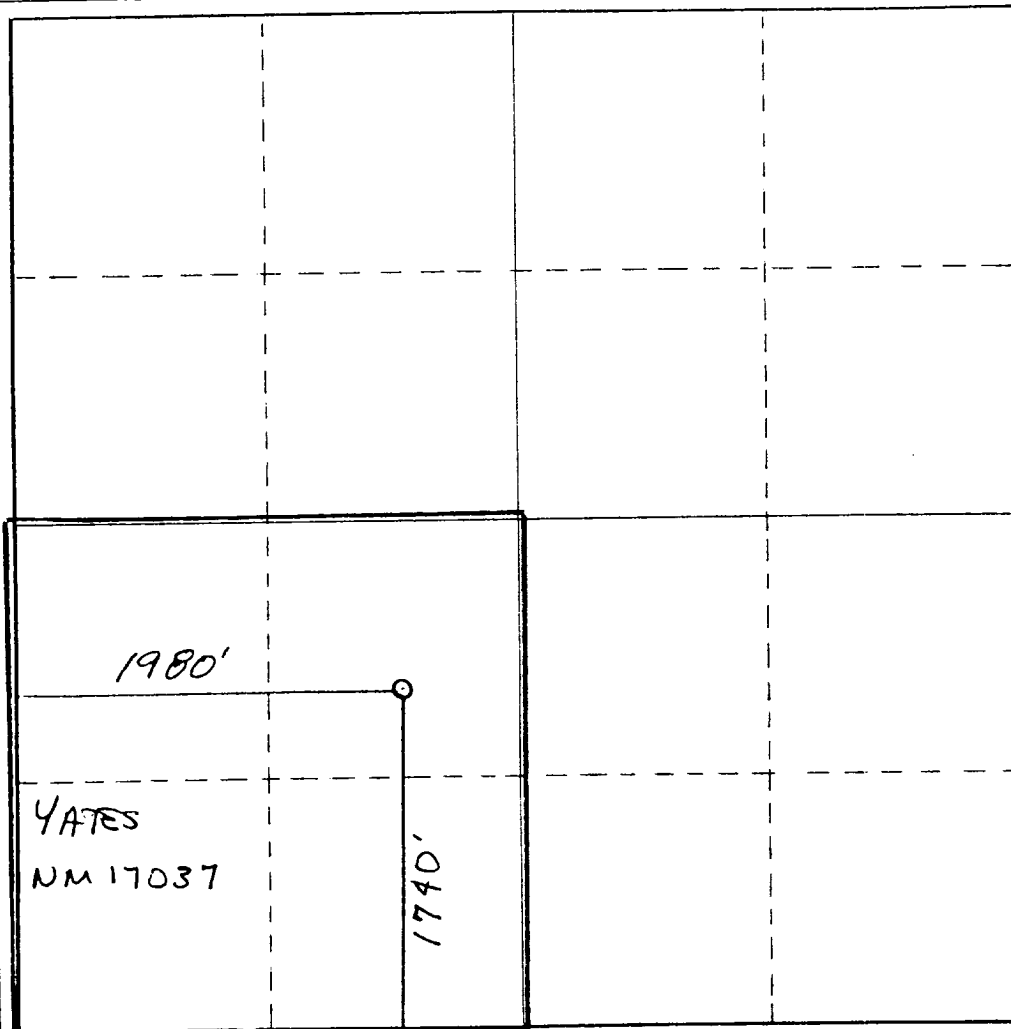
Operator <b>Yates Petroleum Corporation</b>			Lease <b>Finely RV Com</b>		Well No. <b>1-Y</b>
Unit Letter <b>K</b>	Section <b>34</b>	Township <b>6 South</b>	Range <b>25 East</b>	County <b>Chaves</b>	
Actual Footage Location of Well: <b>1740</b> feet from the <b>South</b> line and <b>1980</b> feet from the <b>West</b> line					
Ground Level Elev. <b>3721</b>	Producing Formation <b>Abo</b>		Pool <b>Undesignated Abo</b>		Dedicated Acreage: <b>160</b> Acres

1. Outline the acreage dedicated to the subject well by colored pencil or hachure marks on the plat below.
2. If more than one lease is dedicated to the well, outline each and identify the ownership thereof (both as to working interest and royalty).
3. If more than one lease of different ownership is dedicated to the well, have the interests of all owners been consolidated by communitization, unitization, force-pooling, etc?

☐ Yes ☐ No If answer is "yes," type of consolidation \_\_\_\_\_

If answer is "no," list the owners and tract descriptions which have actually been consolidated. (Use reverse side of this form if necessary.) \_\_\_\_\_

No allowable will be assigned to the well until all interests have been consolidated (by communitization, unitization, forced-pooling, or otherwise) or until a non-standard unit, eliminating such interests, has been approved by the Commission.



CERTIFICATION

I hereby certify that the information contained herein is true and complete to the best of my knowledge and belief.

Name

**Gliserio Rodriguez**

Position

**Regulatory Manager**

Company

**Yates Petroleum Corp.**

Date

**1/4/82**

I hereby certify that the well location shown on this plat was plotted from field notes of actual surveys made by me or under my supervision, and that the same is true and correct to the best of my knowledge and belief.

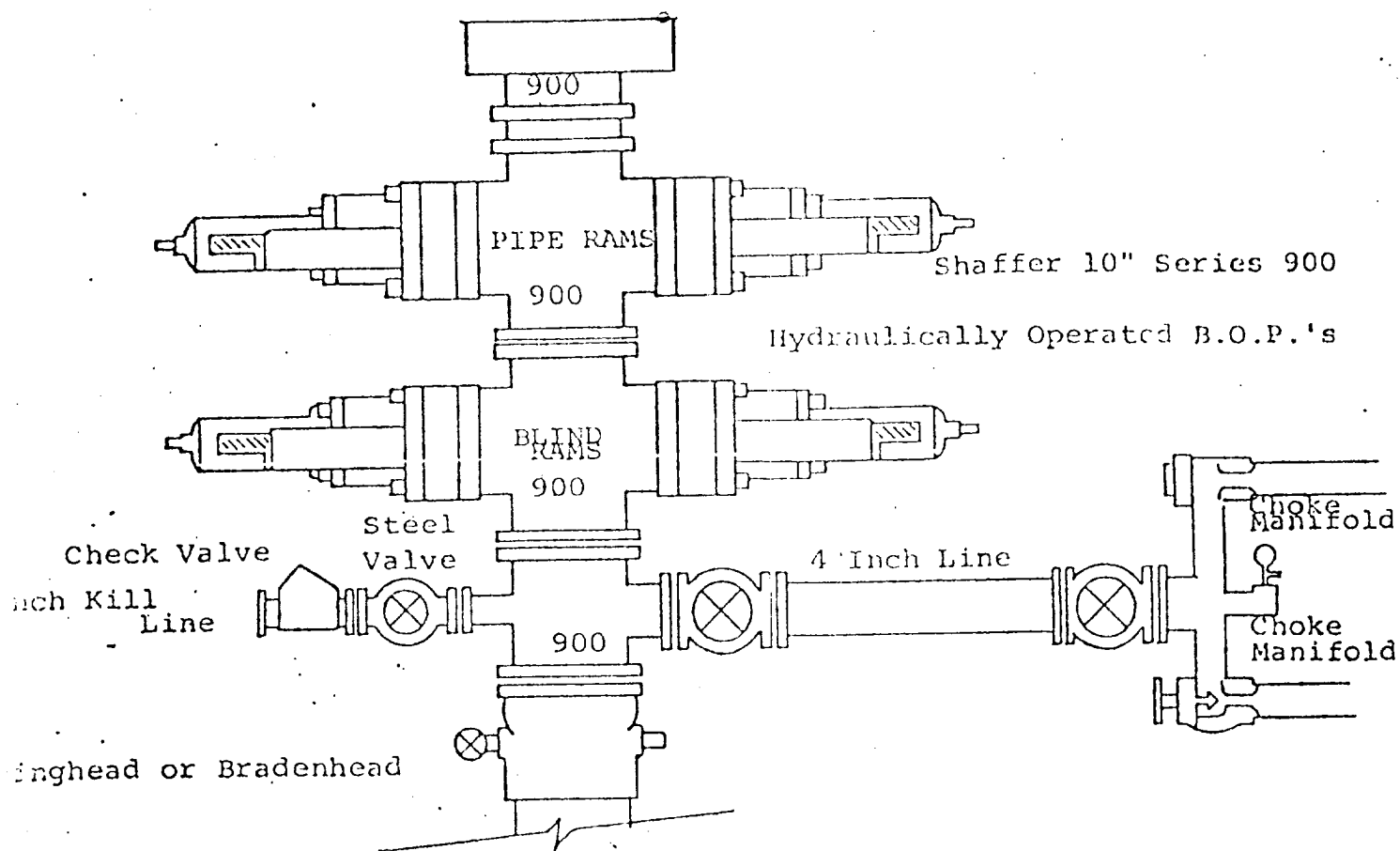
REFER TO ORIGINAL PLAT

Date Surveyed

Registered Professional Engineer and/or Land Surveyor

Certificate No.

0 330 660 990 1320 1650 1980 2310 2640 2000 1500 1000 500 0



#### FOLLOWING CONSTITUTE MINIMUM BLOWOUT PREVENTER REQUIREMENTS

All preventers to be hydraulically operated with secondary manual controls installed prior to drilling out from under casing.

Choke outlet to be a minimum of 4" diameter.

Kill line to be of all steel construction of 2" minimum diameter.

All connections from operating manifolds to preventers to be all steel. hole or tube a minimum of one inch in diameter.

The available closing pressure shall be at least 15% in excess of that required with sufficient volume to operate the B.O.P.'s.

All connections to and from preventer to have a pressure rating equivalent to that of the B.O.P.'s.

Inside blowout preventer to be available on rig floor.

Operating controls located a safe distance from the rig floor.

Hole must be kept filled on trips below intermediate casing. Operator not responsible for blowouts resulting from not keeping hole full.

D. P. float must be installed and used below zone of first gas intrusion.