

NO. OF COPIES RECEIVED	
DISTRIBUTION	
SANTA FE	1
FILE	1
U.S.G.S.	
LAND OFFICE	
OPERATOR	1

NEW MEXICO OIL CONSERVATION COMMISSION

RECEIVED

DEC 31 1981

O. C. D.

30-005-61334
Form C-101
Revised 1-1-65

5A. Indicate Type of Lease

STATE ☐ FEE ☒

5. State Oil & Gas Lease No.

APPLICATION FOR PERMIT TO DRILL, DEEPEN, OR PLUG BACK

1a. Type of Work

DRILL ☒

DEEPEN ☐

PLUG BACK ☐

7. Unit Agreement Name

8. Farm or Lease Name

Moonshine 7

9. Well No.

#9

10. Field and Pool, or Wildcat
Twin Lakes-SA Assoc.

2. Name of Operator

Santa Rita Exploration Corporation

3. Address of Operator

P.O. Box 798, Artesia, New Mexico 88210

4. Location of Well

UNIT LETTER J LOCATED 2310 FEET FROM THE South LINE

AND 2310 FEET FROM THE East

LINE OF SEC. 7 TWP. 9 S RGE. 29 E NMPM

12. County
Chaves

19. Proposed Depth

2800'

19A. Formation

San Andres

20. Rotary or C.T.

Rotary (air)

21. Elevations (show whether DF, RT, etc.)

3921' GL

21A. Kind & Status Plug. Bond

Statewide

21B. Drilling Contractor

Yucca Drilling Co.

22. Approx. Date Work will start

January 17, 1981

23.

PROPOSED CASING AND CEMENT PROGRAM

SIZE OF HOLE	SIZE OF CASING	WEIGHT PER FOOT	SETTING DEPTH	SACKS OF CEMENT	EST. TOP
10 3/4"	8 5/8"	24#	150'	150 Sxs.	Surface
7 7/8"	4 1/2"	10.5#	2800'	700 Sxs.	Surface

Plan to test the San Andres formation. 8 5/8" casing will be run to approximately 150' and set with 150 Sxs. of Class C cement with 2% CaCl₂. Cement will be circulated to surface. Will drill out of the 8 5/8" casing with 7 7/8" bit to approximately 2800'. If sufficient shows are encountered will then run 2800' of 4 1/2" casing and set with 700 Sxs. of 50/50 poz mix, 2% gel, and 8# salt/sx and cement to surface. Will then log, perforate and complete well.

APPROVAL VALID FOR 180 DAYS
PERMIT NO. 78-82
UNLESS DRILLING UNDERWAY.

IN ABOVE SPACE DESCRIBE PROPOSED PROGRAM: IF PROPOSAL IS TO DEEPEN OR PLUG BACK, GIVE DATA ON PRESENT PRODUCTIVE ZONE AND PROPOSED NEW PRODUCTIVE ZONE. GIVE BLOWOUT PREVENTER PROGRAM, IF ANY.

I hereby certify that the information above is true and complete to the best of my knowledge and belief.

Signed Donald R Cray Title Vice-President of Operations Date 12/15/81

(This space for State Use)

APPROVED BY Mike Williams TITLE OIL AND GAS INSPECTOR

DATE JAN 8 1982

CONDITIONS OF APPROVAL, IF ANY:

All distances must be from the outer boundaries of the Sec

Operator Santa Rita Exploration			Lease Moonshine 7		Well No. #9
Unit Letter J	Section 7	Township 9 South	Range 29 East	County Chaves	
Actual Postage Location of Well: 2310 feet from the South line and 2310 feet from the East line					
Ground Level Elev. 3921	Producing Formation San Andres		Pool Twin Lakes San Andres-Assoc.		Dedicated Acreage: 40 Acres

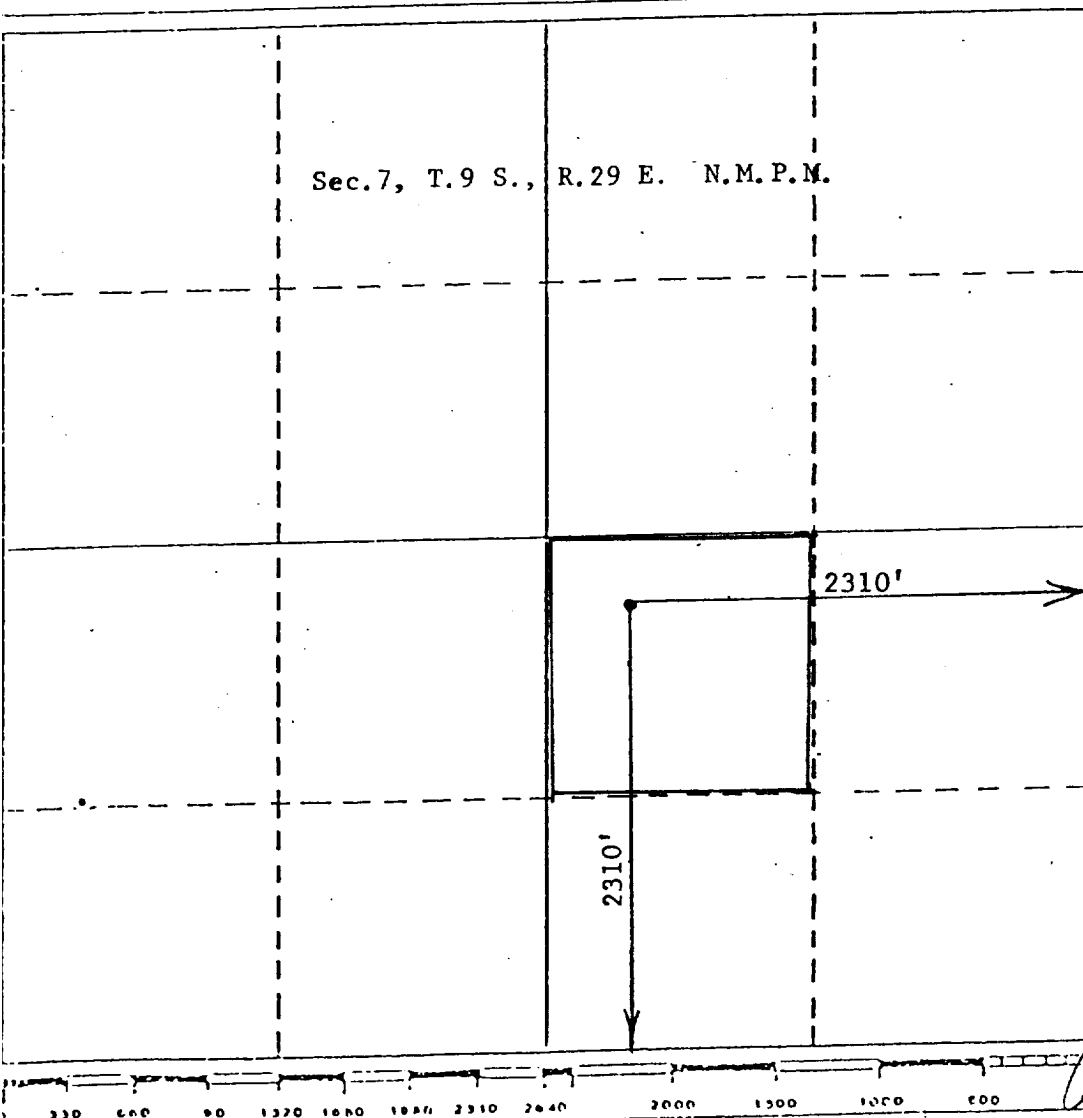
1. Outline the acreage dedicated to the subject well by colored pencil or hatchure marks on the plat below.

2. If more than one lease is dedicated to the well, outline each and identify the ownership thereof (both as to working interest and royalty). Moon Co. Trust (3/4) Donald Winston (1/32) J. Wyman & Winston (1/64) Charles Kelly (1/128) Pauline Parker (1/64) J.T. Wyman (1/64) Marshall & Winston (1/32) Murry McKinnon (1/128) Tenneco Oil Co. (1/8)
3. If more than one lease of different ownership is dedicated to the well, have the interests of all owners been consolidated by communitization, unitization, force-pooling, etc?

☐ Yes ☐ No If answer is "yes," type of consolidation _____

If answer is "no," list the owners and tract descriptions which have actually been consolidated. (Use reverse side of this form if necessary.) _____

No allowable will be assigned to the well until all interests have been consolidated (by communitization, unitization, forced-pooling, or otherwise) or until a non-standard unit, eliminating such interests, has been approved by the Division.



CERTIFICATION

I hereby certify that the information contained herein is true and complete to the best of my knowledge and belief.

Donald R. Craig

Name

Donald R. Craig

Position

Vice-President

Company

Santa Rita Exploration Corp.

Date

12/30/81

I hereby certify that the well location shown on this plat was plotted from field notes of actual surveys made by me or under my supervision, and that the same is true and correct to the best of my knowledge and belief.

Date Surveyed

December 26, 1981

Registered Professional Engineer and/or Licensed Surveyor

John D. Jaquess, P.E. & L.S.

Certificate No.

6290