

UNITED STATES
DEPARTMENT OF THE INTERIOR

GEOLOGICAL SURVEY

APPLICATION FOR PERMIT TO DRILL, DEEPEN, OR PLUG BACK

1a. TYPE OF WORK

DRILL ☒

DEEPEN ☐

PLUG BACK ☐

b. TYPE OF WELL

OIL
WELL ☐

GAS
WELL ☒

OTHER

SINGLE
ZONE ☒

MULTIPLE
ZONE ☐

2. NAME OF OPERATOR

JACK GRYNBERG AND ASSOCIATES

3. ADDRESS OF OPERATOR

1050 17th Street, Suite 1950, Denver, CO 80265

4. LOCATION OF WELL (Report location clearly and in accordance with any State requirements.)*

At surface

1980' FSL & 660' FEL of Sec. 12, T 6 S - R 24 E

At proposed prod. zone

1980' FSL & 660' FEL of Sec. 12, T 6 S - R 24 E

14. DISTANCE IN MILES AND DIRECTION FROM NEAREST TOWN OR POST OFFICE*

25 Miles NNE of Roswell, New Mexico

15. DISTANCE FROM PROPOSED*

LOCATION TO NEAREST
PROPERTY OR LEASE LINE, FT. 660'
(Also to nearest drig. unit line, if any)

16. NO. OF ACRES IN LEASE

2360.00

17. NO. OF ACRES ASSIGNED

TO THIS WELL

160

18. DISTANCE FROM PROPOSED LOCATION*

TO NEAREST WELL, DRILLING, COMPLETED, OR APPLIED FOR, ON THIS LEASE, FT. Approx. 4620'

19. PROPOSED DEPTH

4200'

20. ROTARY OR CABLE TOOLS

Rotary

21. ELEVATIONS (Show whether DF, RT, GR, etc.)

4030.0' GR

22. APPROX. DATE WORK WILL START*

January 15, 1982

23.

PROPOSED CASING AND CEMENTING PROGRAM

SIZE OF HOLE	SIZE OF CASING	WEIGHT PER FOOT	SETTING DEPTH	QUANTITY OF CEMENT
13-1/2"	10-3/4"	32.75	0-900'	good returns to surface
7-7/8"	4-1/2"	10.75	900-4200'	500' above top of pay

1. Spud well, drill 13-1/2" hole to 900', run 10-3/4" surface casing.
2. Drill 7-7/8" hole to 4200', checking B.O.P. Daily.
3. Run tests and logs as needed.
4. Run 4-1/2" production casing to 4200' if warranted.
5. Perforate and stimulate as needed.

In the event that circulation is lost while drilling 7-7/8" hole and intermediate casing is needed, the hole will be reamed and 1500' of 7-7/8" intermediate casing will be set.

B.O.P. Diagram Attached - Exhibit "A"

Gas is not dedicated.

IN ABOVE SPACE DESCRIBE PROPOSED PROGRAM: If proposal is to deepen or plug back, give data on present productive zone and proposed new productive zone. If proposal is to drill or deepen directionally, give pertinent data on subsurface locations and measured and true vertical depths. Give blowout preventer program, if any.

24.

SIGNED

NANCY STOLZLE

TITLE

LAND MANAGER

DATE

January 6, 1982

(This space for Federal or State office use)

PERMIT NO.

APPROVAL DATE

APPROVED BY

TITLE

DATE

CONDITIONS OF APPROVAL, IF ANY:

*See Instructions On Reverse Side

1-1882

NEW MEXICO OIL CONSERVATION COMMISSION
WELL LOCATION AND ACREAGE DEDICATION PLAT

Form No. 1
Supersedes O-128
1-1-79

All distances must be from the outer boundaries of the Section.

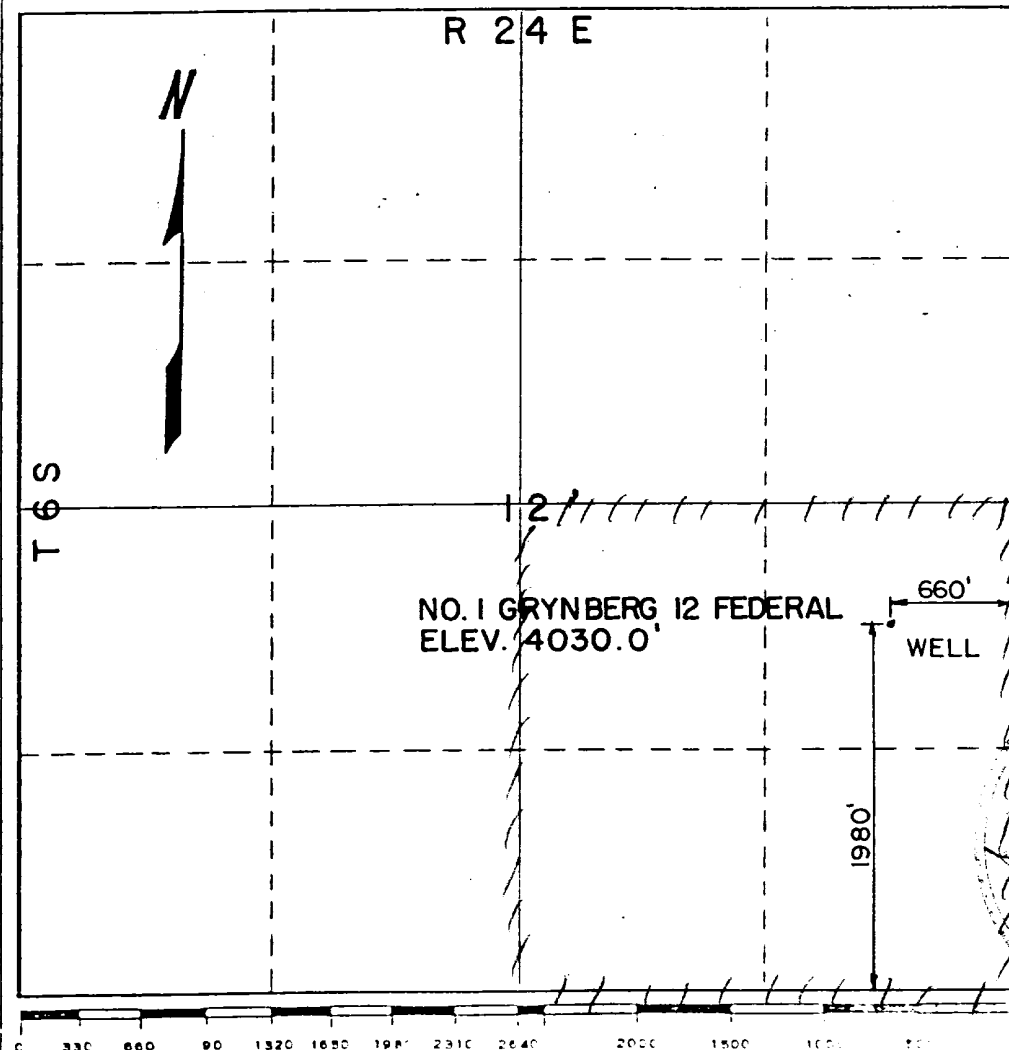
Jack Grynberg & Associates			HOBBS CANYON Grynberg 12 Federal		Well No. 1
East Letter I	Section 12	Township 6-S	Range 24-S	County Chaves	
Actual Footage Location of Well: 660 feet from the EAST line and 1980 feet from the SOUTH line.					
Ground Level Elev. 4030.0'	Producing Formation Abo	Foot Undesignated Abo		Dedicated Acreage: 160 Acres	

1. Outline the acreage dedicated to the subject well by colored pencil or hatchure marks on the plat below.
2. If more than one lease is dedicated to the well, outline each and identify the ownership thereof (both as to working interest and royalty).
3. If more than one lease of different ownership is dedicated to the well, have the interests of all owners been consolidated by communitization, unitization, force-pooling, etc?

☐ Yes ☐ No If answer is "yes," type of consolidation _____

If answer is "no," list the owners and tract descriptions which have actually been consolidated. (Use reverse side of this form if necessary.) _____

No allowable will be assigned to the well until all interests have been consolidated (by communitization, unitization, forced-pooling, or otherwise) or until a non-standard unit, eliminating such interests, has been approved by the Commission.



CERTIFICATION

I hereby certify that the information contained herein is true and complete to the best of my knowledge and belief.

Name
Agent

Position

Jack Grynberg & Associate

Company

Nancy Stotz

Date

1-4-82

I hereby certify that the well location shown on this plat was plotted from field notes of actual surveys made by me or under my supervision, and that the same is true and correct to the best of my knowledge and belief.

31 December 1981

Subscribed

Thomas T. Mann

Professional Engineer

By _____

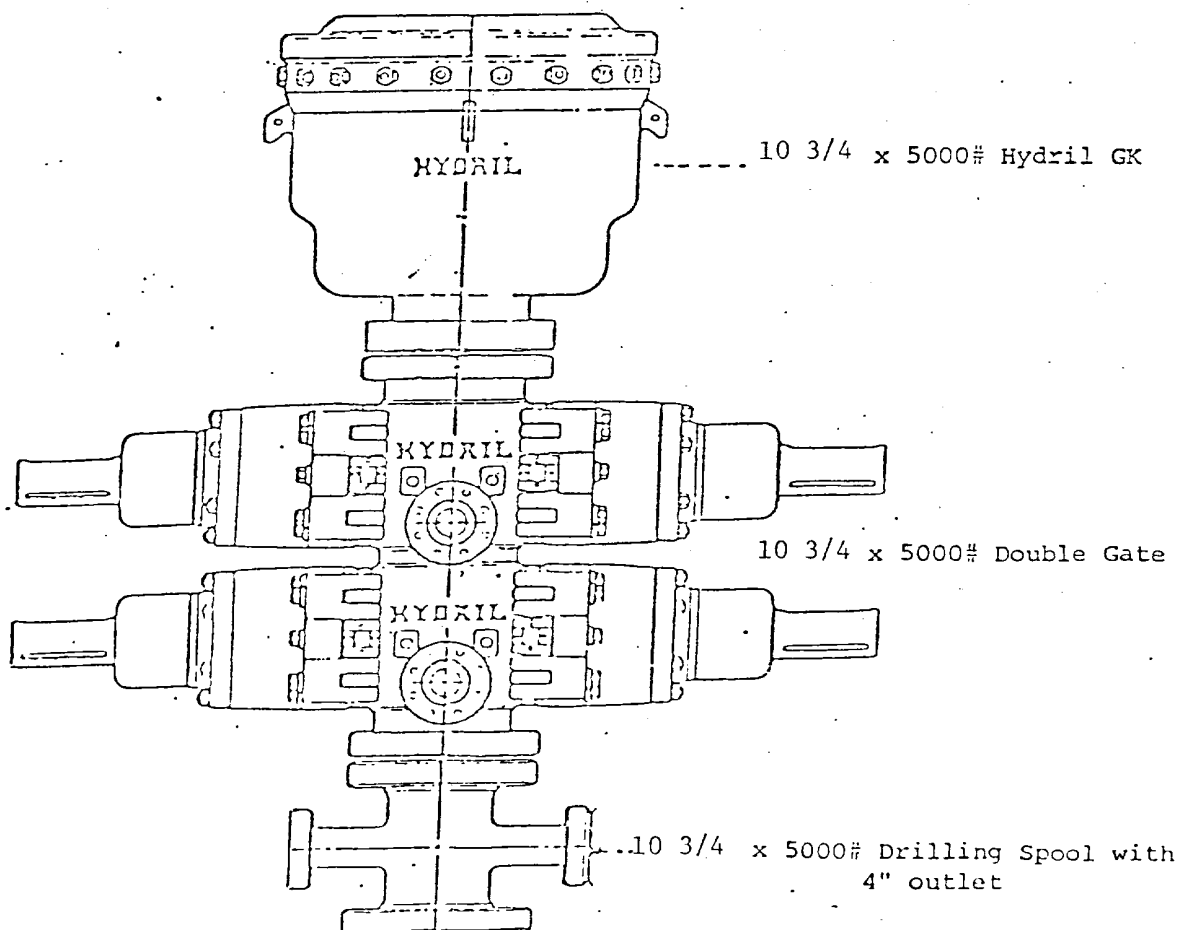
Thomas T. Mann, P.E. & L.S.

N.M. License No. 277

EXHIBIT "A"

Jack Grynberg and Associates
#1 Grynberg 12 Federal
1980' FSL and 660' FEL
Sec. 12, T 6 S - R 24 E
Chaves County, New Mexico

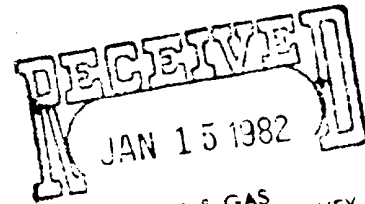
B.O.P. Stack



All items H₂S trimmed

TEN POINT COMPLIANCE PROGRAM
Attachment to Form 9-133C, Application for Permit to Drill

Jack Grynberg and Associates
#1 Grynberg 12 Federal
1980' FSL & 660' FEL
Section 12, T 6 S - R 24 E
Chaves County, New Mexico



1. Geologic Surface Formation
Sandy residuum

2. Estimated Tops of Important Geologic Marker
- | | |
|------------|-------|
| San Andres | 550' |
| Glorieta | 1400' |
| ABO | 3600' |
| TD | 4200' |

3. Estimated Depths of Anticipated Water, Oil, Gas or Other Minerals
Gas 3600 - 4200

4. Proposed Casing Program

<u>HOLE SIZE</u>	<u>CASING SIZE</u>	<u>INTERVAL</u>	<u>GRADE</u>	<u>WT./FT.</u>	<u>NEW OR USED</u>
13 1/2"	10 3/4"	0-900	H-40	32.75	new
7 7/8"	4 1/2"	900-4200	J-55	10.75	new
9 1/4" (Contingency)	7 7/8"	900-1500	K-55	26.40	new

5. Operator's Minimum Specifications For Pressure Control
Exhibit "A" is a schematic diagram of the blowout preventor equipment. The BOP's will be hydraulically tested to the full working pressure after nipping up and after any use under pressure. Pipe rams will be operationally checked each 24 hour period, as will blind rams each time pipe is pulled out of the hole.

6. Type and Characteristic of Proposed Circulating Mediums
Adequate stocks of sorptive agents will be on site to handle possible spills of fuel and oil on the surface. Heavier muds will be on location to be added if pressure requires.

<u>INTERVALS</u>	<u>TYPE</u>	<u>WEIGHT #/GAL</u>	<u>VISC.-SEC./QT.</u>	<u>FLUID LOSS-(</u>
0-900	native mud			
900-3200	native mud			
3200-TD salt base diesel fuel	4-5%	10.2	32-40	20-30CC Wt:

7. Auxiliary Equipment
Kelly cock, a float will be used at the bit, pit level indicators and flow sensor equipment, sub with full-opening valve on floor, drill pipe connection.
8. Testing, Logging, and Coring Program
 - A. DST's as warranted.
 - B. The logging program will consist of a CNL-FDC and Dual Lateral Log-MSFL.
 - C. No coring is anticipated
 - D. Stimulation procedures will be determined after evaluation of logs.
If treatment is indicated, appropriate Sundry Notice will be submitted.
9. Anticipated Abnormal Pressures or Temperatures
No abnormal pressures or temperatures are anticipated.
10. The well will be spudded around January 15, 1982 or as soon as permit and surface use program are approved by the USGS and BLM.

EXHIBIT "B"

Jack Grynberg and Associates,
#1 ~~Grynberg 12 Federal~~ *1/5*
1980' FSL and 660' FEL
Sec. 12, T 6 S - R 24 E
Chaves County, New Mexico

