

NM OIL CONS. COMMISSION  
Drawer D  
Artesia, ~~4~~ <sup>1</sup> ~~821~~ <sup>6</sup> UNITED STATES  
DEPARTMENT OF THE INTERIORSUBMIT IN ~~DUPLICATE~~  
(Other Inst. on reverse side)Form approved.  
Budget Bureau No. 42-R1425.

30-00561388

## GEOLOGICAL SURVEY

C/SF

## APPLICATION FOR PERMIT TO DRILL, DEEPEN, OR PLUG BACK

## 1a. TYPE OF WORK

DRILL ☒DEEPEN ☐PLUG BACK ☐

## b. TYPE OF WELL

OIL WELL ☐GAS WELL ☒OTHER ☐SINGLE ZONE ☐MULTIPLE ZONE ☐

## 2. NAME OF OPERATOR

STEVENS OPERATING CORPORATION

FEB 4 1982

## 3. ADDRESS OF OPERATOR

P. O. Box 2203, Roswell, New Mexico 88201

O. C. D.

## 4. LOCATION OF WELL (Report location clearly and in accordance with any State requirements.)\*

At surface

1650' FNL, 1980' FWL, Sec. 14, T-8-S, R-25-E

At proposed prod. zone

## 14. DISTANCE IN MILES AND DIRECTION FROM NEAREST TOWN OR POST OFFICE\*

18.3 air miles northeast of Roswell, New Mexico

15. DISTANCE FROM PROPOSED\* LOCATION TO NEAREST PROPERTY OR LEASE LINE, FT.  
(Also to nearest drlg. unit line, if any)

660'

## 16. NO. OF ACRES IN LEASE

680

## 18. DISTANCE FROM PROPOSED LOCATION\* TO NEAREST WELL, DRILLING, COMPLETED, OR APPLIED FOR, ON THIS LEASE, FT.

## 19. PROPOSED DEPTH

4500'

## 20. ROTARY OR CABLE TOOLS

Rotary

## 21. ELEVATIONS (Show whether DF, RT, GR, etc.)

3584.6 GR

## 23.

## PROPOSED CASING AND CEMENTING PROGRAM

SIZE OF HOLE	SIZE OF CASING	WEIGHT PER FOOT	SETTING DEPTH	QUANTITY OF CEMENT
14 3/4	10 3/4	32.75#	850'	Sufficient to circulate
9 7/8	*	*	1500'	*
7 7/8	4 1/2	9.50#	4500'	200 sacks

\*If circulation cannot be maintained while drilling the 9 7/8" hole to 1500', 8 5/8" (24#) intermediate casing will be cemented to 1500' with 200 sacks of cement. Well will be drilled to a total depth of 4500' and all potential zones will be evaluated. If commercial production is indicated, well will be selectively perforated and stimulated.

Attached are: 1. Well Location and Dedication  
2. Supplemental Drilling Data  
3. Surface Use Plan.

Gas is not dedicated to a pipeline.

IN ABOVE SPACE DESCRIBE PROPOSED PROGRAM: If proposal is to deepen or plug back, give data on present productive zone and proposed new productive zone. If proposal is to drill or deepen directionally, give pertinent data on subsurface locations and measured and true vertical depths. Give blowout preventer program, if any.

24.

SIGNED

Pat Thompson

(This space for Federal or State office use)

PERMIT NO.

APPROVED

APPROVED BY

CONDITIONS OF APPROVAL, IF ANY

FEB 2 1982

JAMES A. GILLHAM  
DISTRICT SUPERVISOR

Production Coordinator

1-15-82

APPROVAL DATE

JAN 15 1982

OIL & GAS  
U.S. GEOLOGICAL SURVEY  
ROSWELL, NEW MEXICO

\*See Instructions On Reverse Side

NEW MEXICO OIL CONSERVATION COMMISSION  
WELL LOCATION AND ACREAGE DEDICATION PLAT

Form C-102  
Supersedes C-128  
Effective 1-1-65

All distances must be from the outer boundaries of the Section

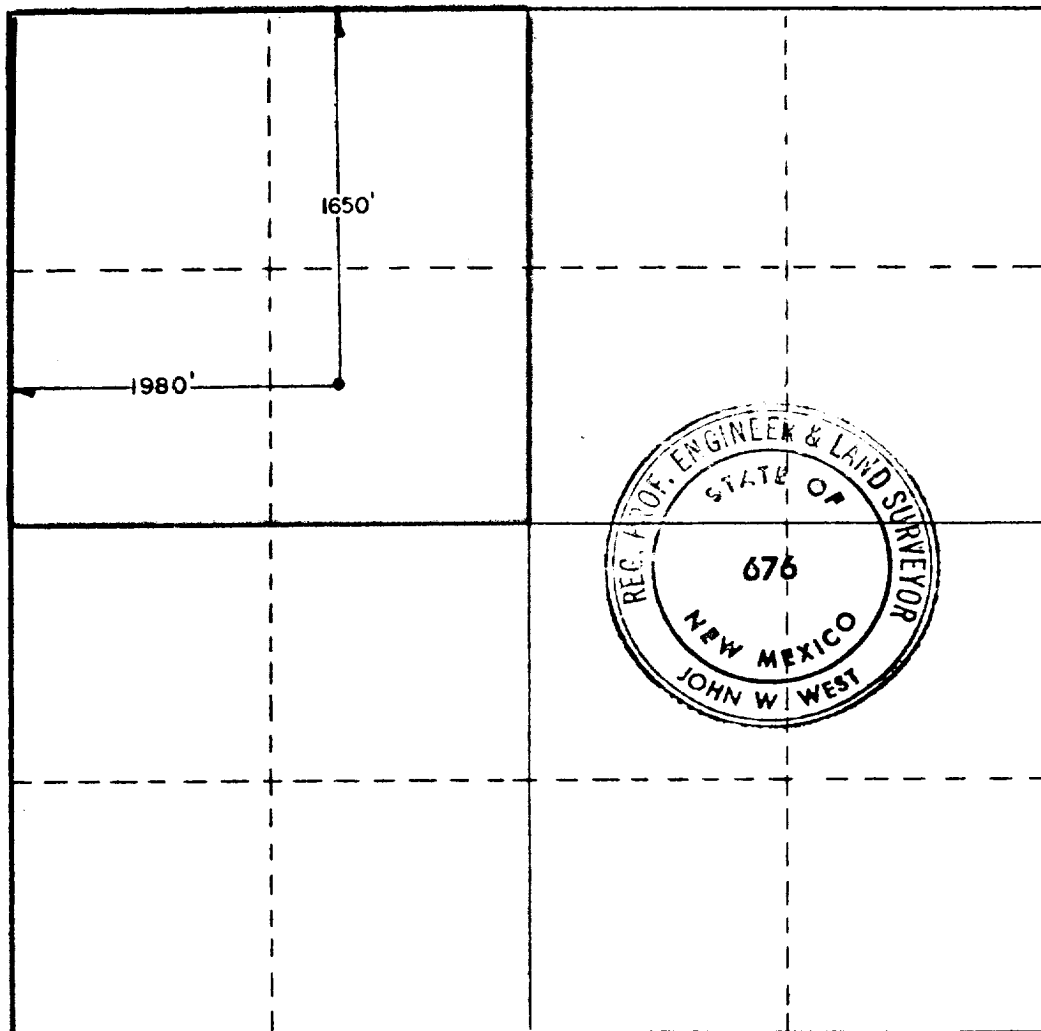
Operator <b>STEVENS OPERATING Co.</b>		Lease <b>PAUL HICKS FED.</b>		Well No. <b>1</b>
Unit Letter <b>F</b>	Section <b>14</b>	Township <b>8 SOUTH</b>	Range <b>25 EAST</b>	County <b>CHAVES</b>
Actual Footage Location of Well: <b>1650</b> feet from the <b>NORTH</b> line and <b>1980</b> feet from the <b>WEST</b> line				
Ground Level Elev. <b>3584.6</b>	Producing Formation <b>ABO</b>	Pool <b>Wildcat</b>	Dedicated Acreage: <b>160</b> Acres	

- Outline the acreage dedicated to the subject well by colored pencil or hatchure marks on the plat below.
- If more than one lease is dedicated to the well, outline each and identify the ownership thereof (both as to working interest and royalty).
- If more than one lease of different ownership is dedicated to the well, have the interests of all owners been consolidated by communitization, unitization, force-pooling, etc?

☐ Yes ☐ No If answer is "yes," type of consolidation \_\_\_\_\_

If answer is "no," list the owners and tract descriptions which have actually been consolidated. (Use reverse side of this form if necessary.) \_\_\_\_\_

No allowable will be assigned to the well until all interests have been consolidated (by communitization, unitization, forced-pooling, or otherwise) or until a non-standard unit, eliminating such interests, has been approved by the Commission.



**CERTIFICATION**

I hereby certify that the information contained herein is true and complete to the best of my knowledge and belief.

*Pat Thompson*

Name  
**Pat Thompson**  
Position  
**Production Coordinator**  
Company  
**Stevens Operating Corp.**

Date  
**1/14/82**

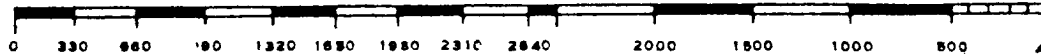
I hereby certify that the well location shown on this plat was plotted from field notes of actual surveys made by me or under my supervision, and that the same is true and correct to the best of my knowledge and belief.

Date Surveyed  
**1-6-82**

Registered Professional Engineer and/or Land Surveyor

*John W. West*

Certificate No. **JOHN W. WEST 676**  
**PATRICK A. ROMERO 6463**  
**Ronald J. Eidson 3239**



SUPPLEMENTAL DRILLING DATA

STEVENS OPERATING CORPORATION  
WELL #1 PAUL HICKS FEDERAL  
1650' FNL & 1980' FWL, SEC. 14, T-8-S, R-25-E  
CHAVES COUNTY, NEW MEXICO

1. SURFACE FORMATION: Permian (Artesia Group)

2. ESTIMATED TOPS OF GEOLOGIC MARKERS:

San Andres	450'	Abo	3700'
Glorietta	1650'		

3. ANTICIPATED POROSITY ZONES:

Water	100'
Oil	950'
Gas	3800'

4. CASING DESIGN:

Size	Interval	Weight	Grade	Joint	Condition
10 3/4"	0 - 900'	32.75#	K55	STC	New
*8 5/8"	0 - 1500'	24.0 #	K55	STC	New
4 1/2"	0 - 4500'	9.5 #	K55	STC	New

\*If circulation cannot be maintained while drilling the 9 7/8" hole to 1500', 8 5/8" (24#) intermediate casing will be cemented at 1500' with 200 sacks of cement.

5. SURFACE CONTROL EQUIPMENT: A double ram-type preventer (900 series). A sketch of BOP stack is attached.

6. CIRCULATING MEDIUM:

0 - 900'	Freshwater mud with gel added if needed for viscosity.
900' -TD	Salt water mud, conditioned as necessary for control of viscosity and water loss.

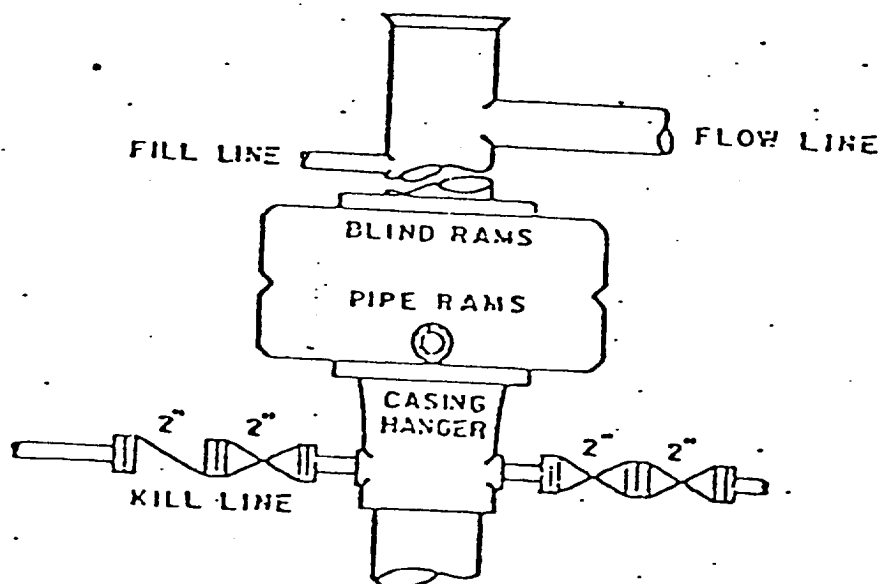
7. AUXILIARY EQUIPMENT: Drill string safety valve.

8. TESTING, LOGGING AND CORING PROGRAMS:

DST's:	As warranted.
Coring:	None planned.
Logging:	A compensated Neutron/Formation Density Log w/Gamma Ray and a Dual Laterolog/Micro-Spherically Focused Log.

9. ABNORMAL PRESSURES, TEMPERATURES OR GASES: None anticipated.

10. ANTICIPATED DATES: It is planned that drilling operations will commence about February 8, 1982. Duration of drilling and completion operations should be 20 to 60 days.

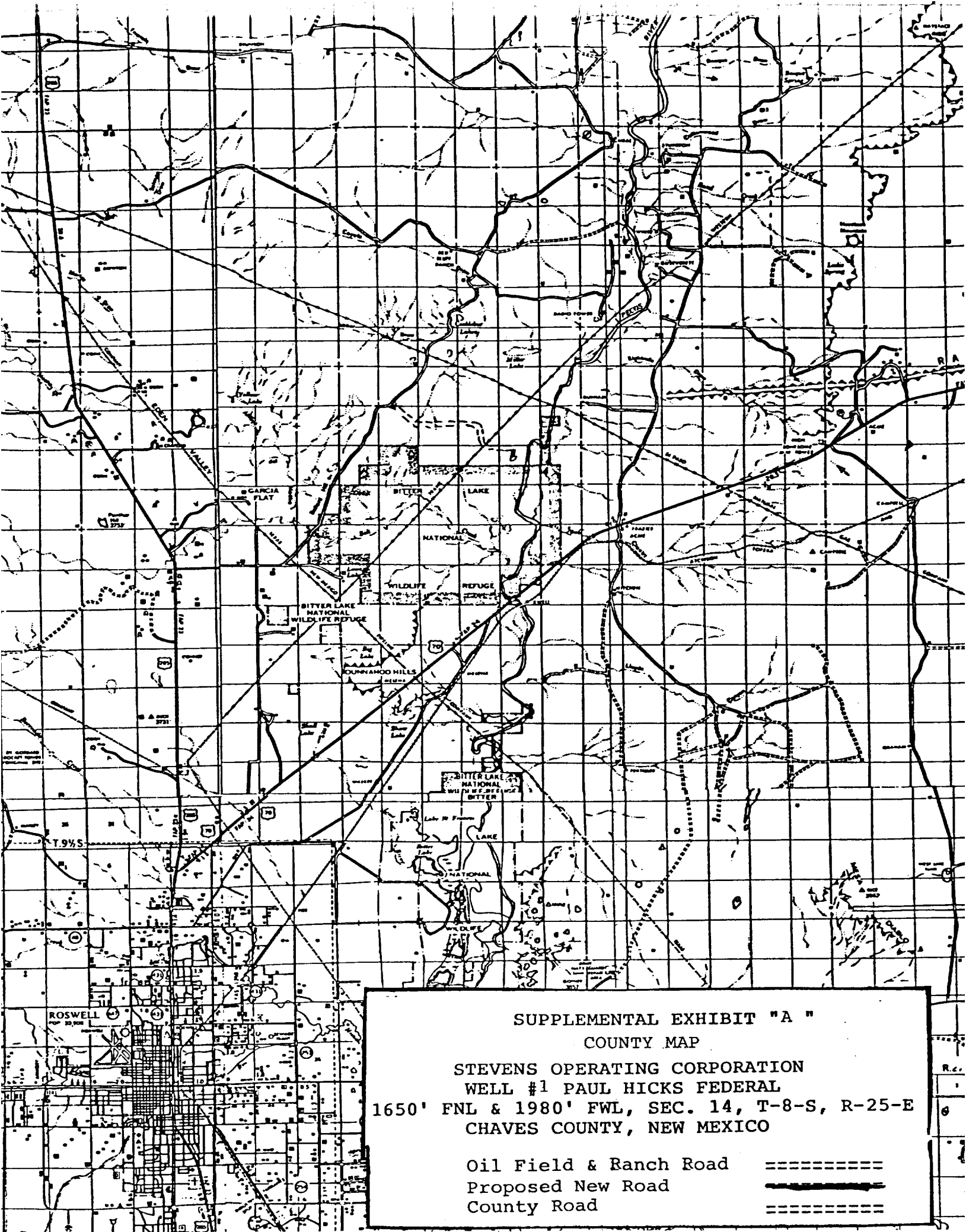


DUAL RAM-TYPE PREVENTER

900 Series

BLOWOUT PREVENTER

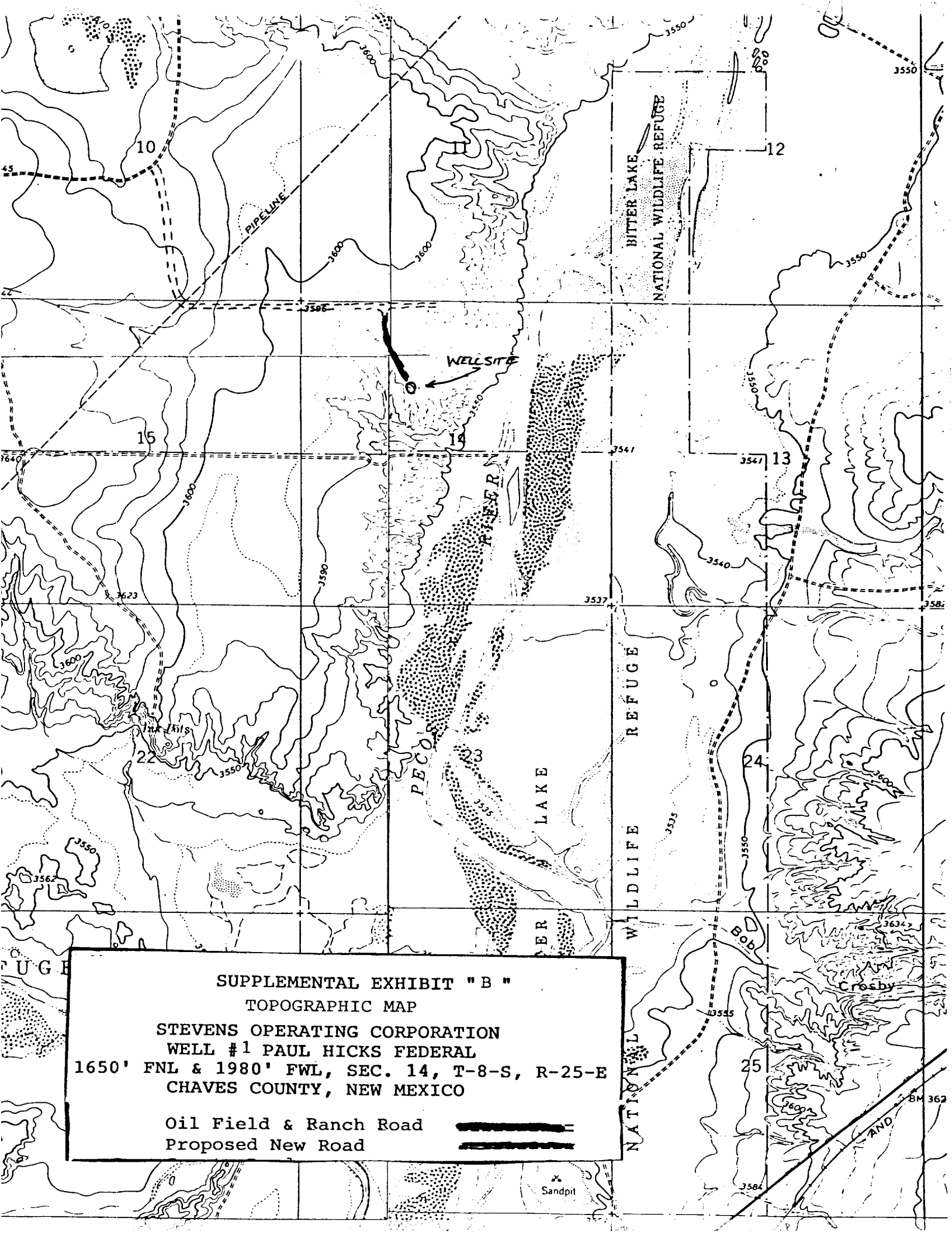
STEVENS OPERATING CORPORATION  
 WELL #1 PAUL HICKS FEDERAL  
 1650 FNL, 1980 FWL, Sec. 14, T8S, R25E  
 CHAVES COUNTY, NEW MEXICO



SUPPLEMENTAL EXHIBIT "A "  
COUNTY MAP

STEVENS OPERATING CORPORATION  
WELL #1 PAUL HICKS FEDERAL  
1650' FNL & 1980' FWL, SEC. 14, T-8-S, R-25-E  
CHAVES COUNTY, NEW MEXICO

Oil Field & Ranch Road      =====  
Proposed New Road            **—————**  
County Road                    =====



SUPPLEMENTAL EXHIBIT "B"

TOPOGRAPHIC MAP

STEVENS OPERATING CORPORATION

WELL #1 PAUL HICKS FEDERAL

1650' FNL & 1980' FWL, SEC. 14, T-8-S, R-25-E  
CHAVES COUNTY, NEW MEXICO

Oil Field & Ranch Road

Proposed New Road



Sandpit