

NEW MEXICO OIL CONSERVATION COMMISSION
WE LOCATION AND ACREAGE DEDICATION PLAT

Form C-102
Supersedes C-128
Effective 1-1-65

All distances must be from the outer boundaries of the Section.

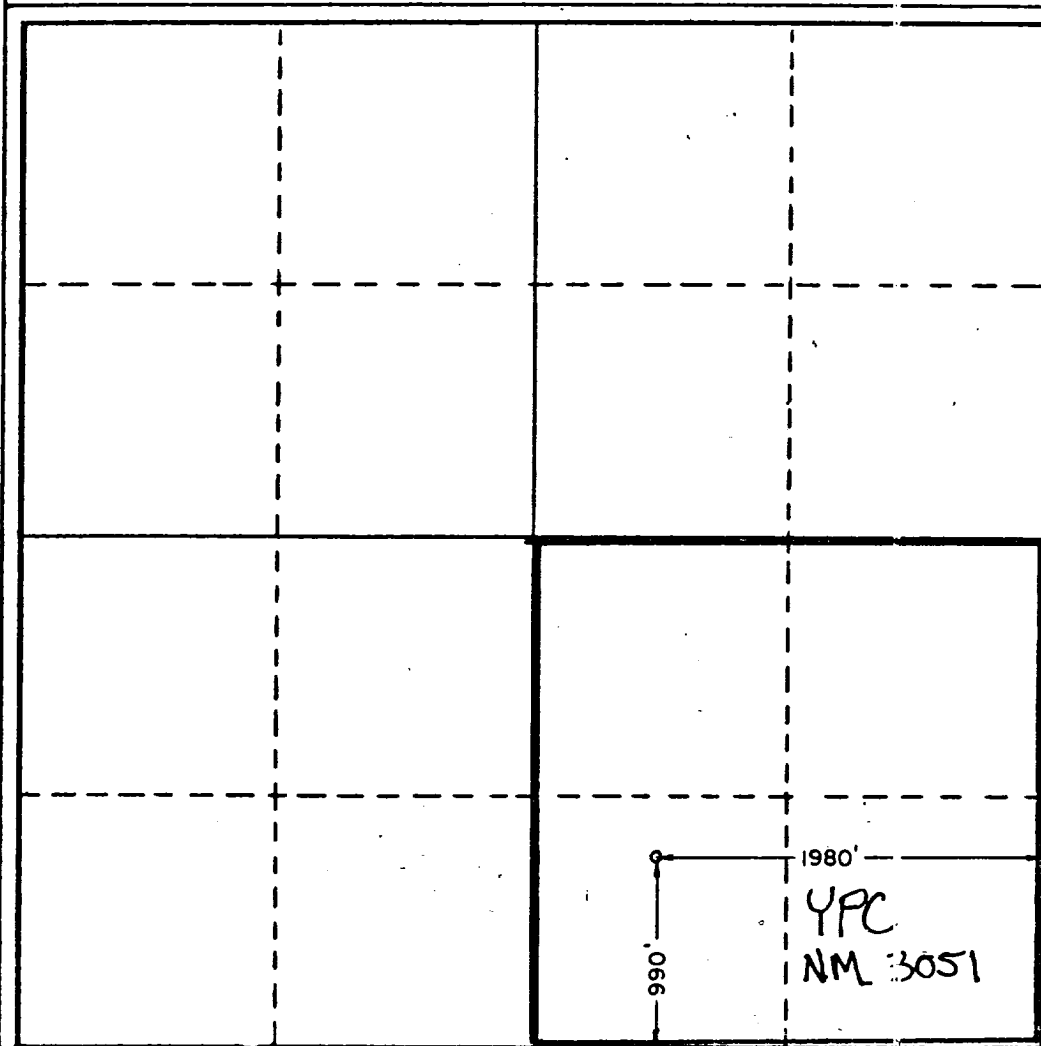
| | | | | | | |
|---|-----------------------------------|----------------------------|-----------------------------------|-------------------------|--|----------------------|
| Operator YATES PETROLEUM CORPORATION | | | Lease Hewitt IM Federal | | | Well No. 2 |
| Unit Letter 0 | Section 25 | Township 6 South | Range 25 East | County Chaves | | |
| Actual Footage Location of Well: 990 feet from the South line and 1980 feet from the East line | | | | | | |
| Ground Level Elev. 3750.0' | Producing Formation Abo | | Pool Undesignated Abo | | Dedicated Acreage: 160 Acres | |

1. Outline the acreage dedicated to the subject well by colored pencil or hatchure marks on the plat below.
2. If more than one lease is dedicated to the well, outline each and identify the ownership thereof (both as to working interest and royalty).
3. If more than one lease of different ownership is dedicated to the well, have the interests of all owners been consolidated by communitization, unitization, force-pooling, etc?

☐ Yes ☐ No If answer is "yes," type of consolidation _____

If answer is "no," list the owners and tract descriptions which have actually been consolidated. (Use reverse side of this form if necessary.) _____

No allowable will be assigned to the well until all interests have been consolidated (by communitization, unitization, forced-pooling, or otherwise) or until a non-standard unit, eliminating such interests, has been approved by the Commission.



CERTIFICATION

I hereby certify that the information contained herein is true and complete to the best of my knowledge and belief.

Gliserio Rodriguez
Name

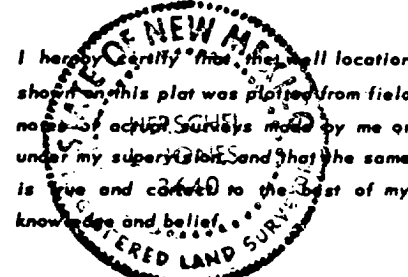
Gliserio Rodriguez
Position

Regulatory Manager
Company

Yates Petroleum Corporation

Date
1/19/82

I hereby certify that the well location shown on this plat was plotted from field notes of actual surveys made by me or under my supervision and that the same is true and correct to the best of my knowledge and belief.



Date Surveyed
1/15/82

Registered Professional Engineer
and/or Land Surveyor

Lenschel
Certificate No.
3540