

Artesia. UNITED STATES  
DEPARTMENT OF THE INTERIOR

## GEOLOGICAL SURVEY

C/SF  
APPLICATION FOR PERMIT TO DRILL, DEEPEN, OR PLUG BACK

## 1a. TYPE OF WORK

DRILL ☒DEEPEN ☐PLUG BACK ☐

## b. TYPE OF WELL

OIL  
WELL ☐GAS  
WELL ☒

OTHER

SINGLE  
ZONE ☒MULTIPLE  
ZONE ☐

## 2. NAME OF OPERATOR

TRANSWESTERN GAS SUPPLY COMPANY ✓

RECEIVED

## 3. ADDRESS OF OPERATOR

P.O. Box 2521, Houston, TX 77001

FEB 8 1982

## 4. LOCATION OF WELL (Report location clearly and in accordance with any State requirements.)\*

At surface

1955'/S 1980'/E

Sec. 9-6S-23E

O. C. D.

At proposed prod. zone

Same

ARTESIA, OFFICE

## 14. DISTANCE IN MILES AND DIRECTION FROM NEAREST TOWN OR POST OFFICE\*

29 miles north-northwest of Roswell, N.M.

## 15. DISTANCE FROM PROPOSED\*

LOCATION TO NEAREST  
PROPERTY OR LEASE LINE, FT.  
(Also to nearest drlg. unit line, if any)

685'

## 16. NO. OF ACRES IN LEASE

2008.1

17. NO. OF ACRES ASSIGNED  
TO THIS WELL

160

18. DISTANCE FROM PROPOSED LOCATION\*  
TO NEAREST WELL, DRILLING, COMPLETED,  
OR APPLIED FOR, ON THIS LEASE, FT.

15,300'

## 19. PROPOSED DEPTH

4500'

## 20. ROTARY OR CABLE TOOLS

Rotary

## 21. ELEVATIONS (Show whether DF, RT, GR, etc.)

4198' GL

## 22. APPROX. DATE WORK WILL START\*

See Below

## 23.

## PROPOSED CASING AND CEMENTING PROGRAM

SIZE OF HOLE	SIZE OF CASING	WEIGHT PER FOOT	SETTING DEPTH	QUANTITY OF CEMENT
17 1/2"	13 3/8"	48# K-55	60'	Redimix (Circulation)
12 1/4"	8 5/8"	24# K-55	1800'+	+ 950 sx (Circulation)
7 7/8"	4 1/2"	10.5# J-55	TD	± 225 sx

Fish in hole on No.2 well necessitated junking hole. Skid rig 25' south and drill No.2-Y well to ABO objective. There will be no new surface disturbance. Surface Use Plan will be identical to Plan that was approved for No.2 well.

Oral approval has been obtained from U.S.G.S. for above work.

Gas is dedicated to Transwestern Pipeline Company.

IN ABOVE SPACE DESCRIBE PROPOSED PROGRAM: If proposal is to deepen or plug back, give data on present productive zone and proposed new productive zone. If proposal is to drill or deepen directionally, give pertinent data on subsurface locations and measured and true vertical depths. Give blowout preventer program, if any.

## 24.

SIGNED

JERRY W. LONG

TITLE Agent

DATE January 26, 1982

(This space for Federal or State office use)

PERMIT NO.

APPROVAL DATE

APPROVED BY  
CONDITIONS OF APPROVAL, IF ANY:

APPROVED

FEB 2 1982

JAMES A. OLLHAM  
DISTRICT SUPERVISOR

TITLE

DATE

THE CONDITIONS OF APPROVAL  
OF WELL No. 2 APPLY TO THIS  
REPLACEMENT WELL.

\*See Instructions On Reverse Side

RECEIVED  
JAN 27 1982OIL & GAS  
U.S. GEOLOGICAL SURVEY  
ROSWELL, NEW MEXICOPocher  
ADI + 1-5  
2-12-82

All distances must be from the outer boundaries of the Section.

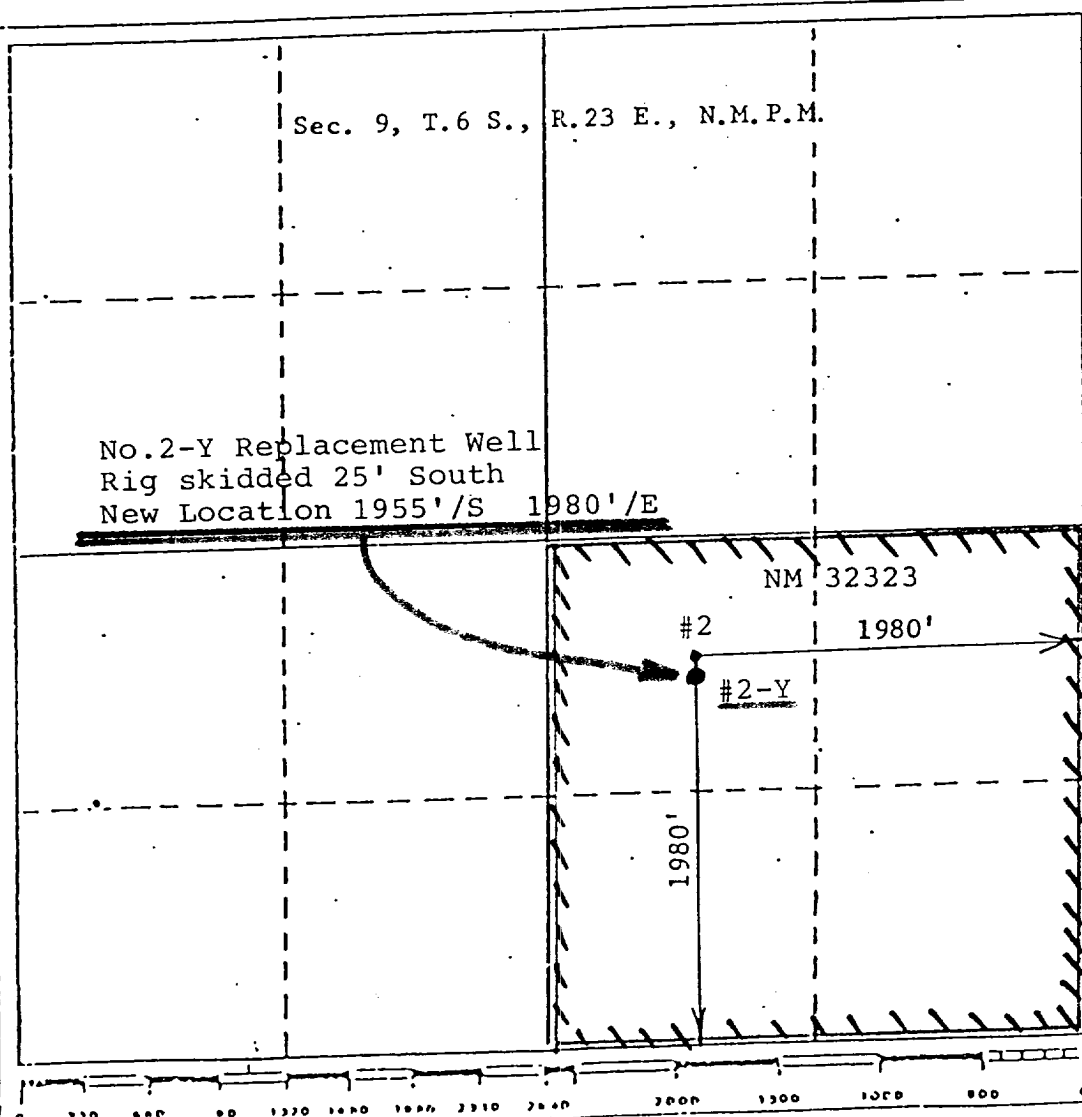
Operator <b>Transwestern Gas Supply COMPANY</b>			Lease <b>Five Mile Tank Federal</b>		Well No. <b>2-Y</b>
Unit Letter <b>J</b>	Section <b>9</b>	Township <b>6 South</b>	Range <b>23 East</b>	County <b>Chaves</b>	
Actual Footage Location of Well: 1980 feet from the South line, and 1980 feet from the East line					
Ground Level Elev. <b>4198</b>	Producing Formation <b>ABO</b>		Pool <b>UNDESIGNATED ABO</b>		Dedicated Acres: <b>(SE<math>\frac{1}{4}</math>) 160</b> Acres

1. Outline the acreage dedicated to the subject well by colored pencil or hatchure marks on the plat below.
2. If more than one lease is dedicated to the well, outline each and identify the ownership thereof (both as to working interest and royalty). Single Lease
3. If more than one lease of different ownership is dedicated to the well, have the interests of all owners been consolidated by communitization, unitization, force-pooling, etc?

☐ Yes ☐ No If answer is "yes," type of consolidation \_\_\_\_\_

If answer is "no," list the owners and tract descriptions which have actually been consolidated. (Use reverse side of this form if necessary.) \_\_\_\_\_

No allowable will be assigned to the well until all interests have been consolidated (by communitization, unitization, forced-pooling, or otherwise) or until a non-standard unit, eliminating such interests, has been approved by the Division.



CERTIFICATION

I hereby certify that the information contained herein is true and complete to the best of my knowledge and belief.

Name  
**JERRY W. LONG**

Position  
**Agent**

Company

**TRANSWESTERN GAS SUPPLY CO**

Date

**November 24, 1981**

**REVISED Jan. 26, 1982**

I hereby certify that the well location shown on this plat was plotted from field notes of actual surveys made by me or under my supervision, and that the same is true and correct to the best of my knowledge and belief.

Date Surveyed  
**November 24, 1981**

Regulated by the New Mexico Oil and Gas Conservation Division  
**John D. Jaquess, P.E. & L.S.**

Certificate No.  
**6290**