

MEXICO OIL CONSERVATION COMMISSION  
WELL LOCATION AND ACREAGE DEDICATION PLAT

Form O-101  
Supersedes O-100  
Effective 10-1-77

All distances must be from the outer boundaries of the Section.

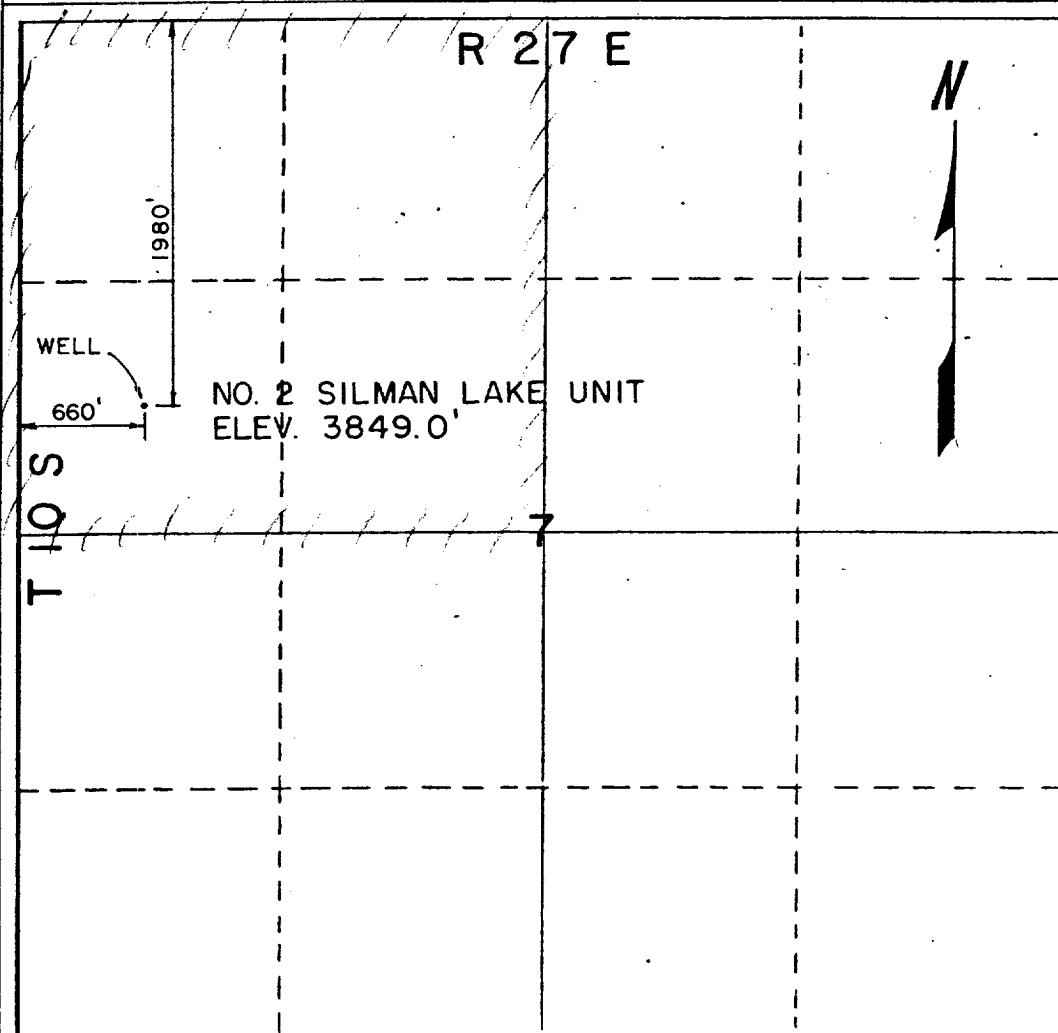
Viking Petroleum Inc.		Silman Lake Unit		No. 2
Unit Letter E	Section 7	Township 10-S	Range 27-E	County Chaves
Actual Footage Location of Well: 660 feet from the WEST line and 1980 feet from the NORTH line				
Ground Level Elev. 3849.0'	Producing Formation ABO	Foot Test	Dedicated Acreage: 160 Acres	

1. Outline the acreage dedicated to the subject well by colored pencil or hachure marks on the plat below.
2. If more than one lease is dedicated to the well, outline each and identify the ownership thereof (both as to working interest and royalty).
3. If more than one lease of different ownership is dedicated to the well, have the interests of all owners been consolidated by communitization, unitization, force-pooling, etc?

☐ Yes ☐ No If answer is "yes," type of consolidation \_\_\_\_\_

If answer is "no," list the owners and tract descriptions which have actually been consolidated. (Use reverse side of this form if necessary.) \_\_\_\_\_

No allowable will be assigned to the well until all interests have been consolidated (by communitization, unitization, forced-pooling, or otherwise) or until a non-standard unit, eliminating such interests, has been approved by the Commission.



CERTIFICATION

I hereby certify that the information contained herein is true and complete to the best of my knowledge and belief.

Name  
Agent  
Position  
Viking Petroleum Inc.  
Company  
*Nancy Stoff*  
Date  
2-3-82

I hereby certify that the well location shown on this plat was plotted from field notes of actual surveys made by me or under my supervision, and that the same is true and correct to the best of my knowledge and belief.

28 January 1982

Date Surveyed  
*Thomas T. Mann*  
Registered Professional Engineer  
and/or Land Surveyor  
Thomas T. Mann, P.E. & L.S.

N.M. License No. 277