

DEPARTMENT OF THE INTERIOR

GEOLOGICAL SURVEY

SUBMIT IN TRIPLICATE*
(Other instructions on reverse side)Form approved.
Budget Bureau No. 42-R1425.

30-005-61410

RECEIVED

5. LEASE DESIGNATION AND SERIAL NO.

NM 39127

6. IF INDIAN, ALLOTTEE OR TRIBE

FEB 17 1982

7. UNIT AGREEMENT NAME

O. C. D.

ARTESIA, OFFICE

8. FARM OR LEASE NAME

Doris "RI" Federal

9. WELL NO.

2

10. FIELD AND POOL, OR WILDCAT

Wildcat Abo

11. SEC., T., R., M., OR BLK.
AND SURVEY OR AREA

Sec. 27-T5S-R25E

12. COUNTY OR PARISH

Chaves

NM

1a. TYPE OF WORK

DRILL ☒DEEPEN ☐PLUG BACK ☐

b. TYPE OF WELL

OIL
WELL ☐GAS
WELL ☒

OTHER

SINGLE
ZONE ☐MULTIPLE
ZONE ☐

2. NAME OF OPERATOR

Yates Petroleum Corporation

3. ADDRESS OF OPERATOR

207 S. 4th, Artesia, New Mexico 88210

4. LOCATION OF WELL (Report location clearly and in accordance with any State requirements*)

At surface

705' FNL & 7000' FWL

At proposed prod. zone

same

14. DISTANCE IN MILES AND DIRECTION FROM NEAREST TOWN OR POST OFFICE* ROSWELL, NEW MEXICO

36.5 miles north and 15½ miles east of Roswell, NM.

15. DISTANCE FROM PROPOSED*

LOCATION TO NEAREST
PROPERTY OR LEASE LINE, FT.
(Also to nearest drlg. unit line, if any) 1980'

16. NO. OF ACRES IN LEASE

520

17. NO. OF ACRES ASSIGNED
TO THIS WELL

160

18. DISTANCE FROM PROPOSED LOCATION*

TO NEAREST WELL, DRILLING, COMPLETED,
OR APPLIED FOR, ON THIS LEASE, FT.

19. PROPOSED DEPTH

4300'

20. ROTARY OR CABLE TOOLS

Rotary

21. ELEVATIONS (Show whether DF, RT, GR, etc.)

3742.2 GL

22. APPROX. DATE WORK WILL START*

ASAP

23.

PROPOSED CASING AND CEMENTING PROGRAM

SIZE OF HOLE	SIZE OF CASING	WEIGHT PER FOOT	SETTING DEPTH	QUANTITY OF CEMENT
12 1/2"	8 5/8"	40.5# J-55	Approx. 950'	630 sx. circulated
7 7/8" or 6 1/2"	4 1/2"	9.5# or 10.5#	TD	350 sx.

We propose to drill and test the Abo and intermediate formations. Approximately 950' of surface casing will be set and cement circulated to shut off gravel and caving. If needed (lost circulation) 7" intermediate casing will be run to 1500' and cemented with enough cement calculated to tie back into the surface casing. Temperature survey will be run to determine cement top. If commercial, production casing will be run and cemented with adequate cover, perforate, and stimulate as needed for production.

MUD PROGRAM: FW gel and LCM to 950', Brine to 3500', Brine & KCL water to TD.

BOP PROGRAM: BOP's will be installed at approximately 950' and tested daily.

GAS NOT DEDICATED.

IN ABOVE SPACE DESCRIBE PROPOSED PROGRAM: If proposal is to deepen or plug back, give data on present productive zone and proposed new productive zone. If proposal is to drill or deepen directionally, give pertinent data on subsurface locations and measured and true vertical depths. Give blowout preventer program, if any.

24.

SIGNED

TITLE Regulatory Manager

DATE 1/11/82

(This space for Federal or State office use)

PERMIT NO.

APPROVED

APPROVAL DATE

APPROVED BY

CONDITIONS OF APPROVAL

FEB 12 1982

JAMES A. GILLHAM
DISTRICT SUPERVISOR

TITLE

APPROVAL SUBJECT TO
GENERAL REQUIREMENTS AND
SPECIAL STIPULATIONS
ATTACHED

DATE

Posted ID-1
API + NL Book
2-19-82

**NEW MEXICO OIL CONSERVATION COMMISSION
WELL LOCATION AND ACREAGE DEDICATION PLAT**

Form C-102
Supersedes C-120
Effective 1-1-83

All distances must be from the outer boundaries of the Section.

Operator YATES PETROLEUM CORPORATION			Lease Doris RI Federal		Well No. 2
Unit Letter C	Section 27	Township 5 South	Range 25 East	County Chaves	
Actual Footage Location of Well: 990 feet from the North line and 1650 feet from the West line					
Ground Level Elev. 3745.7'	Producing Formation Abo	Pool Undesignated Abo		Dedicated Acreage: 1.60 Acres	

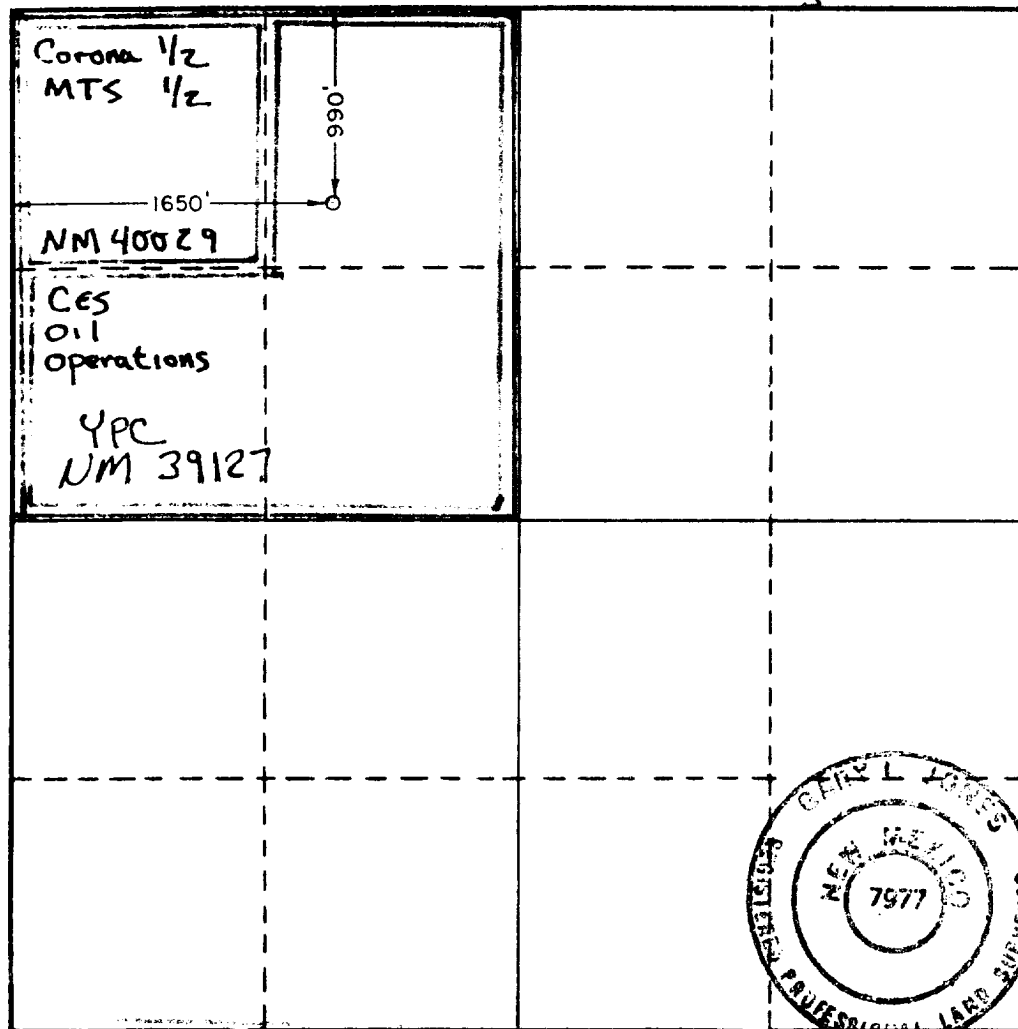
1. Outline the acreage dedicated to the subject well by colored pencil or hachure marks on the plat below.
2. If more than one lease is dedicated to the well, outline each and identify the ownership thereof (both as to working interest and royalty).
3. If more than one lease of different ownership is dedicated to the well, have the interests of all owners been consolidated by communitization, unitization, force-pooling, etc?

☐ Yes ☐ No If answer is "yes," type of consolidation **Communitization**

If answer is "no," list the owners and tract descriptions which have actually been consolidated. (Use reverse side of this form if necessary.) _____

No allowable will be assigned to the well until all interests have been consolidated (by communitization, unitization, forced-pooling, or otherwise) or until a non-standard unit, eliminating such interests, has been approved by the Commission.

SEE Original Plat



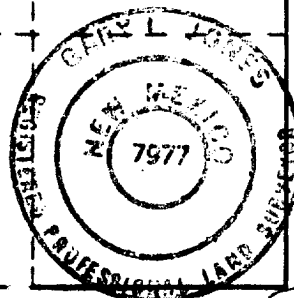
CERTIFICATION

I hereby certify that the information contained herein is true and complete to the best of my knowledge and belief.

Cy Cowan
Name
Cy Cowan
Position
Regulatory Coordinator
Company
Yates Petroleum
Date
2-4-82

I hereby certify that the well location shown on this plat was plotted from field notes of actual surveys made by me or under my supervision, and that the same is true and correct to the best of my knowledge and belief.

Date Surveyed
2/2/82
Registered Professional Engineer and/or Land Surveyor
[Signature]
Certificate No.
7977



UNITED STATES
DEPARTMENT OF THE INTERIOR
GEOLOGICAL SURVEY

NO OIL CONS. COMMISSION
DRAWER DD
ARTESIA, NM 88210

SUNDRY NOTICES AND REPORTS ON WELLS

(Do not use this form for proposals to drill or to deepen or plug back to a different reservoir. Use Form 9-331-C for such proposals.)

1. oil well ☐ gas well ☒ other

2. NAME OF OPERATOR

Yates Petroleum Corporation

3. ADDRESS OF OPERATOR

207 S. 4th, Artesia, New Mexico 88210

4. LOCATION OF WELL (REPORT LOCATION CLEARLY. See space 17 below.)

AT SURFACE: 990' FNL & 1650' FWL

AT TOP PROD. INTERVAL:

AT TOTAL DEPTH: same

16. CHECK APPROPRIATE BOX TO INDICATE NATURE OF NOTICE, REPORT, OR OTHER DATA

REQUEST FOR APPROVAL TO:

TEST WATER SHUT-OFF ☐

FRACTURE TREAT ☐

SHOOT OR ACIDIZE ☐

REPAIR WELL ☐

PULL OR ALTER CASING ☐

MULTIPLE COMPLETE ☐

CHANGE ZONES ☐

ABANDON* ☐

(other) change of location

SUBSEQUENT REPORT OF:

RECEIVED
FEB 8 1982

(NOTE: Report results of multiple completion or zone change on Form 9-330.)

OIL & GAS
U.S. GEOLOGICAL SURVEY
ROSWell, NEW MEXICO

17. DESCRIBE PROPOSED OR COMPLETED OPERATIONS (Clearly state all pertinent details, and give pertinent dates, including estimated date of starting any proposed work. If well is directionally drilled, give subsurface locations and measured and true vertical depths for all markers and zones pertinent to this work.)*

Change of location from: 785- FNL & 1980' FWL

to: 990' FNL & 1650' FWL

Location is being moved by recommendation of N.M.A.S. New plat is included.

Subsurface Safety Valve: Manu. and Type _____ Set @ _____ Ft.

18. I hereby certify that the foregoing is true and correct

SIGNED Cy Cowan TITLE Reg. Coordinator DATE 2/4/82

APPROVED BY
CONDITIONS OF APPROVAL, IF ANY:

APPROVED

TITLE

DATE

FEB 12 1982

JAMES A. GILLHAM
DISTRICT SUPERVISOR

*See Instructions on Reverse Side

LEASE

NM-39127

6. IF INDIAN, ALLOTTEE OR TRIBE NAME

7. UNIT AGREEMENT NAME

FEB 17 1982

8. FARM OR LEASE NAME

Doris "RI" Federal

O. C. D.
ARTESIA, OFFICE

9. WELL NO.

2

10. FIELD OR WILDCAT NAME

Undesignated Abo

11. SEC., T., R., M., OR BLK. AND SURVEY OR AREA

Sec. 27-T5S-R25E

12. COUNTY OR PARISH

Chaves

13. STATE

NM

14. API NO.

15. ELEVATIONS (SHOW DF, KDB, AND WD)

3745.7

**MEXICO OIL CONSERVATION COMMISSION
WELL LOCATION AND ACREAGE DEDICATION PLAT**

Form C-102
Supersedes C-128
Effective 1-1-83

All distances must be from the outer boundaries of the Section.

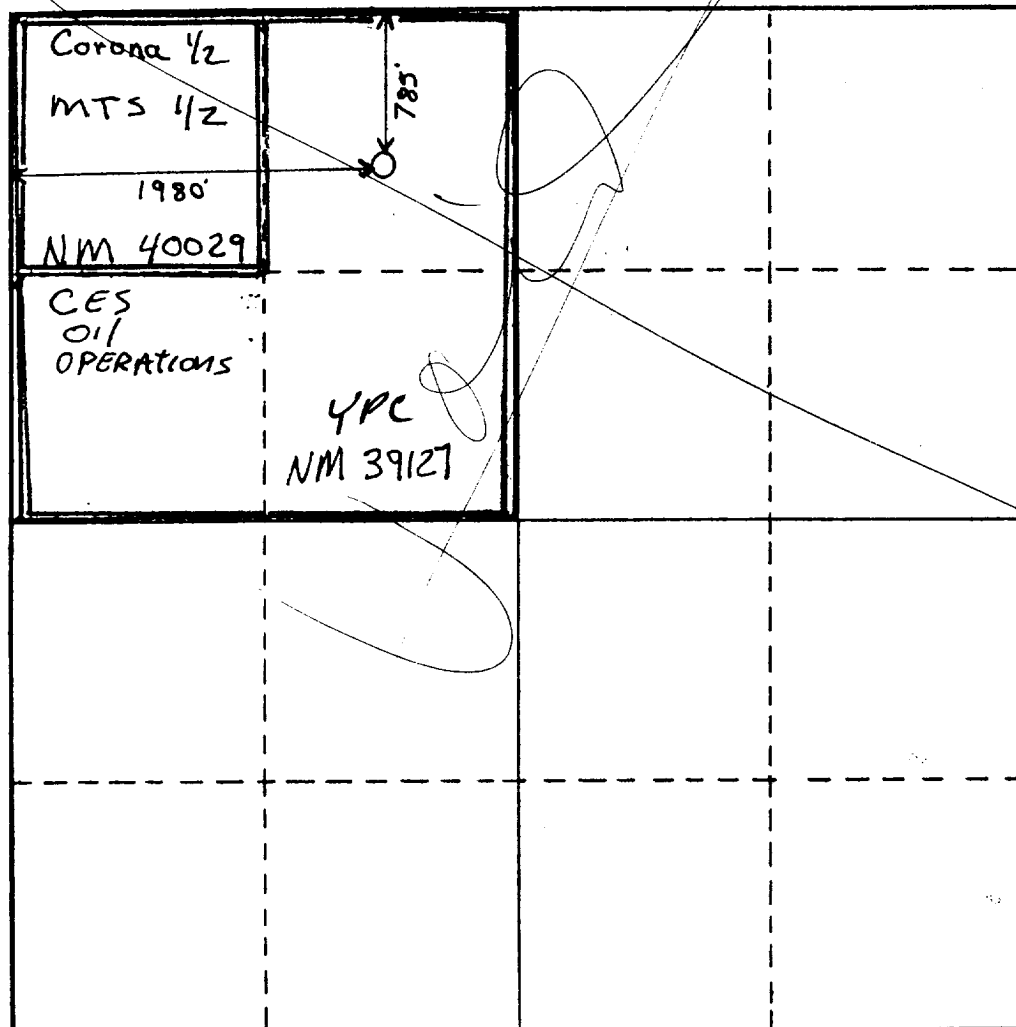
Operator Yates Petroleum Corporation			Lease Doris "RI" Federal		Well No. 2
Unit Letter C	Section 27	Township 5 South	Range 25 East	County Chaves, NM	
Actual Footage Location of Well: 785 feet from the North line and 1980 feet from the West line					
Ground Level Elev. 3742.2	Producing Formation Abo		Pool Wildcat Abo	Dedicated Acreage: 160 Acres	

1. Outline the acreage dedicated to the subject well by colored pencil or hatchure marks on the plat below.
2. If more than one lease is dedicated to the well, outline each and identify the ownership thereof (both as to working interest and royalty).
3. If more than one lease of different ownership is dedicated to the well, have the interests of all owners been consolidated by communitization, unitization, force-pooling, etc?

☐ Yes ☐ No If answer is "yes," type of consolidation _____

If answer is "no," list the owners and tract descriptions which have actually been consolidated. (Use reverse side of this form if necessary.) _____

No allowable will be assigned to the well until all interests have been consolidated (by communitization, unitization, forced-pooling, or otherwise) or until a non-standard unit, eliminating such interests, has been approved by the Commission.



CERTIFICATION

I hereby certify that the information contained herein is true and complete to the best of my knowledge and belief.

Name
Gliserio Rodriguez

Position
Regulatory Manager

Company
Yates Petroleum Corporation

Date
1/11/82

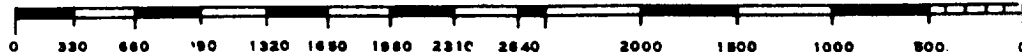
I hereby certify the well location shown on this plat was plotted from field notes and is correct to the best of my knowledge and belief.



Date Surveyed
1/5/82

Registered Professional Engineer and/or Land Surveyor
[Signature]

Certificate No.
3640



Yates Petroleum Corporation
Doris "RI" Fed. #2
785' FNL & 1980' FWL
Section 27-5-25
Chaves County, New Mexico

In conjunction with Form 9-331C, Application for Permit to Drill subject well, Yates Petroleum Corporation submits the following ten items of pertinent information in accordance with USGS requirements:

1. The geologic surface formation is sandy alluvium.
2. The estimated tops of geologic markers are as follows:

San Andres	556'
Glorieta	1580'
Fullerton	2979'
Abo	3728'
TD	4300'

3. The estimated depths at which anticipated water, oil, or gas formations are expected to be encountered:

Water: Approximately 250' - 300'
Oil or Gas: Abo - 3750'

4. Proposed Casing Program: See Form 9-331C.
5. Pressure Control Equipment: See Form 9-331C and Exhibit B.
6. Mud Program: See Form 9-331C.
7. Auxilliary Equipment: Kelly Cock; pit level indicators and flow sensor equipment;
sub with full-opening valve on floor, drill pipe connections.
8. Testing and Logging Program:
Samples: Surface casing to TD.
DST's: As warranted.
Logging: Surface casing to TD.
9. No abnormal pressures or temperatures are anticipated.
10. Anticipated starting date: As soon as possible after approval.

Yates Petroleum Corporation
Doris "RI" Fed. #2
785' FNL & 1980' FWL
Section 27-5-25
(Developmental Well)

JAN 13 1982

OIL & GAS
U.S. GEOLOGICAL SURVEY
ROSWELL, NEW MEXICO

This plan is submitted with Form 9-331C, Application for Permit to Drill, covering the above described well. The purpose of this plan is to describe the location, the construction activities and operations plan, the surface disturbance involved, and the procedures to be followed in rehabilitating the surface after completion of the operations, so that a complete appraisal can be made of the environmental effect associated with the drilling of this well.

1. EXISTING ROADS.

Exhibit A is a portion of a county map showing the roads in the vicinity of the proposed location. The proposed wellsite is located approximately 39.5 miles NNE of Roswell, New Mexico and the access route to the location is indicated in red and green on Exhibit A.

DIRECTIONS:

1. Proceed north from Roswell on Highway 285 for a distance of approximately 31 miles.
2. Turn east for approximately 8 miles and continue NE for 2 miles.
3. Then turn SE on the Mapco Pipeline right-of-way; go for 3 miles then turn east for 1 mile. Go north for 1 mile through Alkali draw then turn east to fence line. Go through the cattleguard and turn north for approximately 1 mile to the Doris "RI" #1 location. The access road will start from the lease road where flagged.

2. PLANNED ACCESS ROAD.

- A. The proposed new access will be approximately .8 miles in length to the southwest corner of the location. The road will lie in a northerly then easterly direction.
- B. The new road will be 12 feet in width (driving surface).
- C. The new road will be covered with the necessary depth of caliche or other suitable material. The surface will be crowned, with drainage on one side. One turnout will be built.
- D. The new road has been flagged and the route of the road is visible.

3. LOCATION OF EXISTING WELL.

- A. There is drilling activity within a one-mile radius of the wellsite.

4. LOCATION OF EXISTING AND/OR PROPOSED FACILITIES.

- A. There are production facilities on this lease at the present time.
- B. In the event that the well is productive, the necessary production facilities will be installed on the drilling pad. If the well is productive oil, a gas or diesel self-contained unit will be used to provide the necessary power. No power will be required if the well is productive of gas.

5. LOCATION AND TYPE OF WATER SUPPLY.

- A. It is planned to drill the proposed well with a fresh water system. The water will be obtained from a water hauling company.

6. SOURCE OF CONSTRUCTION MATERIALS.

- A. Any material required for construction of the drilling pad and the new access road will be obtained from the nearest existing pit in NW/4 SE/4 Sec. 7-5-25.

7. METHODS OF HANDLING WASTE DISPOSAL.

- A. Drill cuttings will be disposed of in a reserve pit.
- B. Drilling fluids will be allowed to evaporate in the reserve pits until the pits are dry.
- C. Water produced during operations will be collected in tanks until hauled to an approved disposal system, or separate disposal application will be submitted to the USGS for appropriate approval.
- D. Oil produced during operation will be stored in tanks until sold.
- E. Current laws and regulations pertaining to the disposal of human waste will be complied with.
- F. Trash, waste paper, garbage and junk will be buried in a separate trash pit and covered with a minimum of 24 inches dirt. All waste material will be contained to prevent scattering by the wind.
- G. All trash and debris will be buried or removed from the wellsite within 30 days after finishing drilling and/or completion operations.

8. ANCILLARY FACILITIES.

- A. None required.

9. WELLSITE LAYOUT.

- A. Exhibit C shows the relative location and dimensions of the well pad, the reserve pits, etc.
- B. The location surface is on the slope of a hill, minor cut and fill will be needed in the pad area.
- C. The reserve pits will be plastic lined.
- D. A 400' x 400' area and road has been staked and flagged.

10. PLANS FOR RESTORATION OF THE SURFACE.

- A. After finishing drilling and/or completion operations, all equipment and other material not needed for further operations will be removed. The location will be cleaned of all trash and junk to leave the wellsite in as pleasing a condition as possible.

- B. Unguarded pits, if any, containing fluids will be fenced until they have dried and leveled.
- C. If the proposed well is non-productive, all rehabilitation requirements of the BLM and USGS will be complied with as expeditiously as possible. All pits will be filled and leveled within 90 days after abandonment.

11. OTHER INFORMATION.

- A. Topography: The land surface in the vicinity of the wellsite is sloping to the south and east. The immediate area of the wellsite is discussed above in paragraph 9B.
- B. Flora and Fauna: The vegetation cover consists of mesquite, and miscellaneous desert growth. No wildlife was observed, but the wildlife in the area probably includes those typical of semi-arid desert land. The area is used for cattle grazing.
- C. The Pecos River is approximately one mile east.
- D. There are no inhabited dwellings or windmills within a mile of the vicinity of the proposed well.
- E. Surface Ownership: The wellsite is on federal surface and minerals.
- F. There is no evidence of any archaeological, historical or cultural sites in the area.

12. OPERATOR'S REPRESENTATIVES.

- A. The field representatives responsible for assuring compliance with the approved surface use plan are:

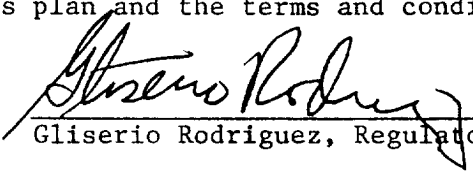
Gliserio "Rod" Rodriguez, Cy Cowan or Ken Beardemphl
Yates Petroleum Corporation
207 S. 4th St.
Artesia, New Mexico 88210
(505) 746-3558

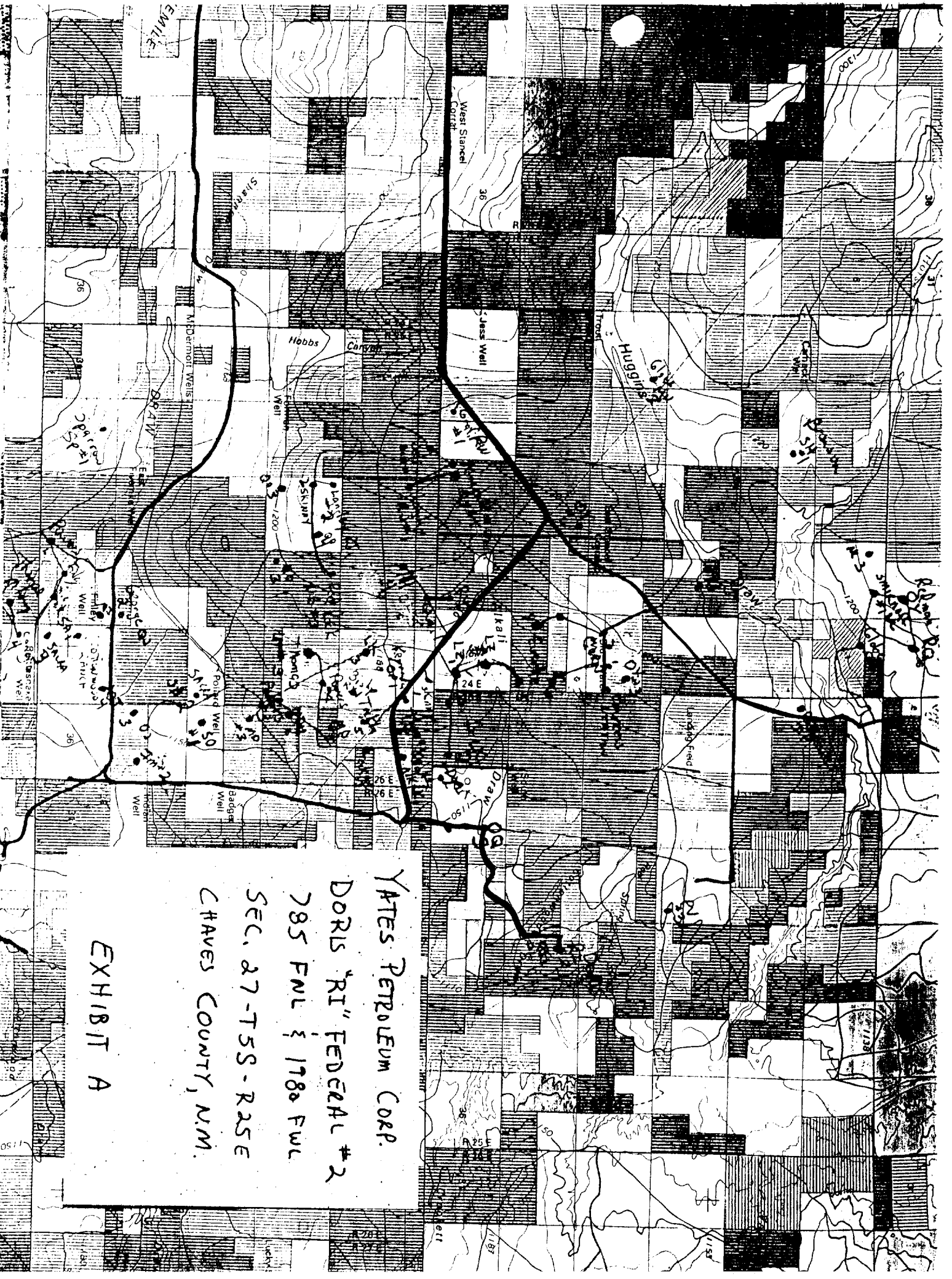
13. CERTIFICATION.

I hereby certify that I, or persons under my direct supervision, have inspected the proposed drillsite and access route, that I am familiar with the conditions which presently exist; that the statements made in this plan are to the best of my knowledge true and correct; and, that the work associated with the operations proposed herein will be performed by Yates Petroleum Company and its contractors and subcontractors in conformity with this plan and the terms and conditions under which it is approved.

1/11/82

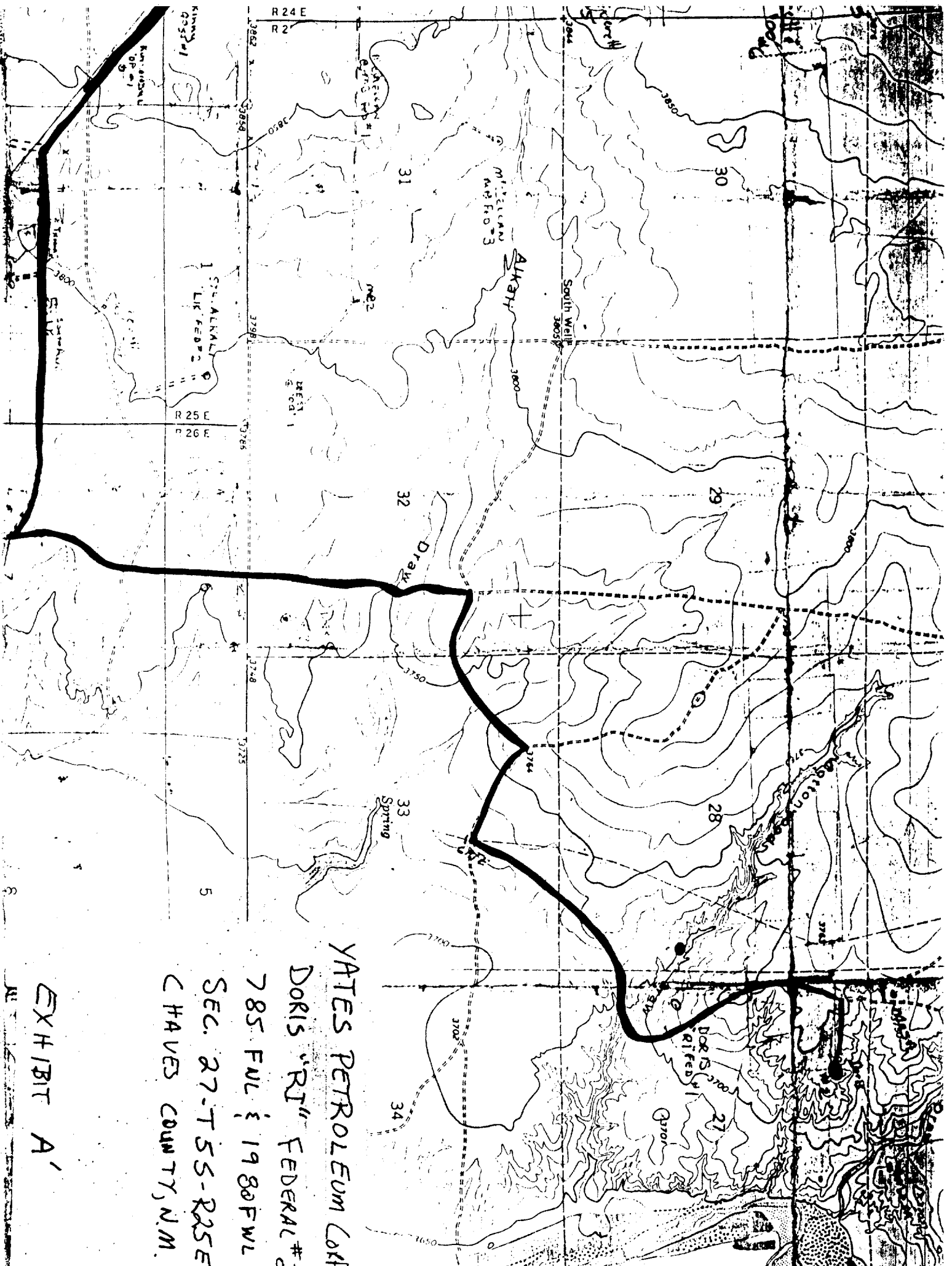
Date


Gliserio Rodriguez, Regulatory Manager



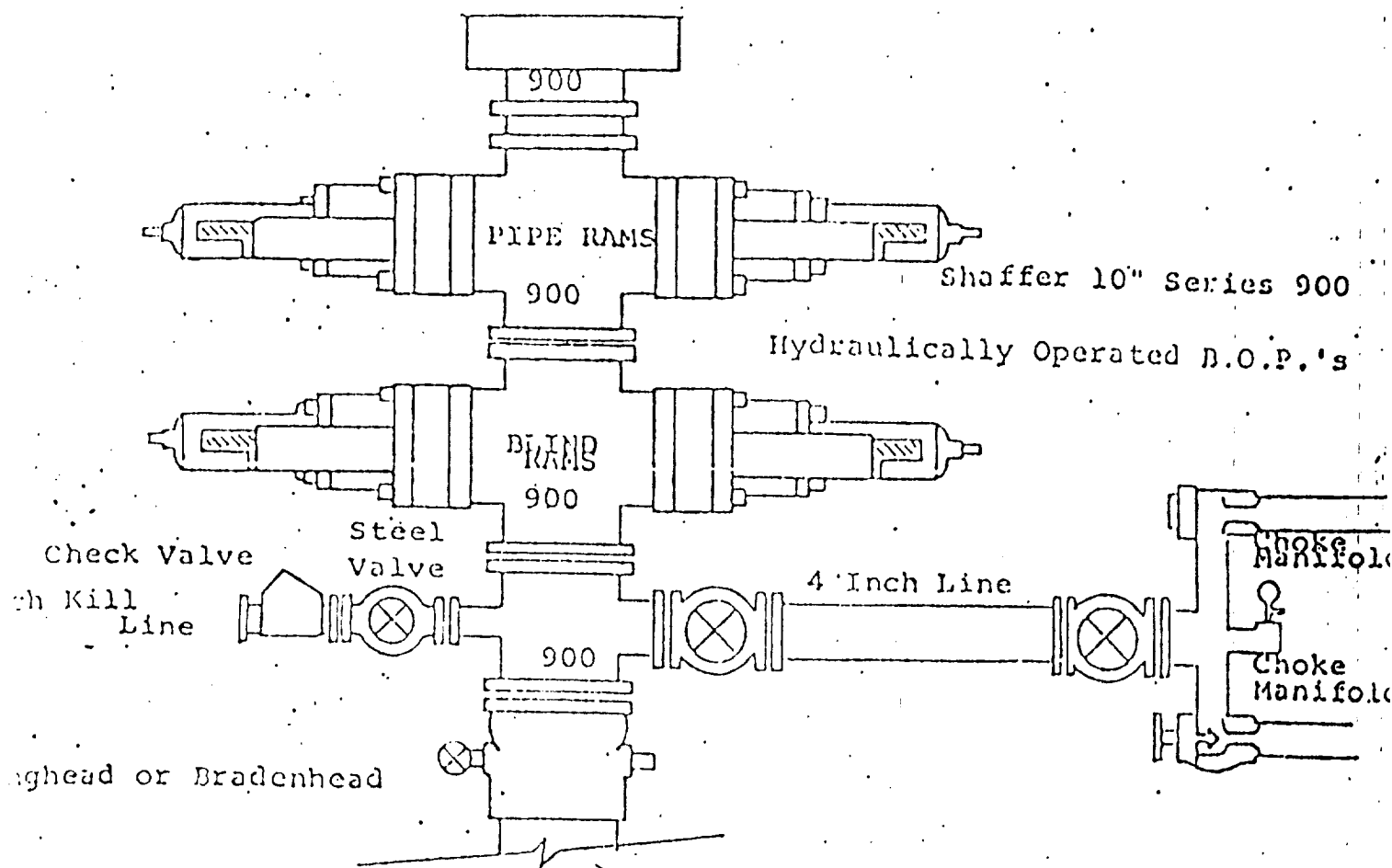
YATES PETROLEUM CORP.
DORIS "RI" FEDERAL #2
785 FNL & 1780 FNL
SEC. 27-T5S-R2SE
CHAVES COUNTY, N.M.

EXHIBIT A



YATES PETROLEUM CO.
DORIS "RI" FEDERAL #
785 FUL 1980 FWL
SEC. 27-T55-R25E
CHAVES COUNTY, N.M.

EXHIBIT A'



FOLLOWING CONSTITUTE MINIMUM BLOWOUT PREVENTER REQUIREMENTS

- All preventers to be hydraulically operated with secondary manual controls.
- Installed prior to drilling out from under casing.
- Choke outlet to be a minimum of 4" diameter.
- Kill line to be of all steel construction of 2" minimum diameter.
- All connections from operating manifolds to preventers to be all steel.
- Hole or tube a minimum of one inch in diameter.
- The available closing pressure shall be at least 15% in excess of that required with sufficient volume to operate the B.O.P.'s.
- All connections to and from preventer to have a pressure rating equivalent to that of the B.O.P.'s.
- Inside blowout preventer to be available on rig floor.
- Operating controls located a safe distance from the rig floor.
- Hole must be kept filled on trips below intermediate casing. Operator not responsible for blowouts resulting from not keeping hole full.
- P. float must be installed and used below zone of first gas intrusion.

LAURENCE

