

NM OIL CONS. COMMISSION
Drawer
Artesia, NEW MEXICO
DEPARTMENT OF THE INTERIOR
GEOLOGICAL SURVEYSUBMIT IN PLICATE*
(Other instructions on
reverse side)Form approved.
Budget Bureau No. 42-R1425.30-005-61412
RECEIVED
FEB 22 1982C/SF
APPLICATION FOR PERMIT TO DRILL, DEEPEN, OR PLUG BACK

1a. TYPE OF WORK DRILL <input checked="" type="checkbox"/> DEEPEN <input type="checkbox"/> PLUG BACK <input type="checkbox"/>		7. UNIT AGREEMENT <input checked="" type="checkbox"/> O.C.D.	
b. TYPE OF WELL OIL WELL <input type="checkbox"/> GAS WELL <input checked="" type="checkbox"/> OTHER <input type="checkbox"/> SINGLE ZONE <input checked="" type="checkbox"/> MULTIPLE ZONE <input type="checkbox"/>		8. FARM OR LEASE NAME Stancel Fed Com	
2. NAME OF OPERATOR MESA PETROLEUM CO.		9. WELL NO. 7	
3. ADDRESS OF OPERATOR 1000 VAUGHN BUILDING/MIDLAND, TEXAS 79701-4493		10. FIELD AND POOL, OR WILDCAT Pecos Slope Undesignated Abo	
4. LOCATION OF WELL (Report location clearly and in accordance with any State requirements.)* At surface 1980' FNL & 1980' FWL SE NW/4		11. SEC., T., R., M., OR BLK. AND SURVEY OR AREA Sec 22, T5S, R24E	
14. DISTANCE IN MILES AND DIRECTION FROM NEAREST TOWN OR POST OFFICE* 41 miles North/Northeast of Roswell, New Mexico		12. COUNTY OR PARISH Chaves	
13. DISTANCE FROM PROPOSED* LOCATION TO NEAREST PROPERTY OR LEASE LINE, FT. (Also to nearest drlg. unit line, if any) 660' / 660'		16. NO. OF ACRES IN LEASE 1000	
18. DISTANCE FROM PROPOSED LOCATION* TO NEAREST WELL, DRILLING, COMPLETED, OR APPLIED FOR, ON THIS LEASE, FT. 2600'		19. PROPOSED DEPTH 4150'	
21. ELEVATIONS (Show whether DF, RT, GR, etc.) 4002.5' GR		20. ROTARY OR CABLE TOOLS Rotary	
23. PROPOSED CASING AND CEMENTING PROGRAM		22. APPROX. DATE WORK WILL START* March 9, 1982	

SIZE OF HOLE	SIZE OF CASING	WEIGHT PER FOOT	SETTING DEPTH	QUANTITY OF CEMENT
17 1/2"	13 3/8"	48#	900'	SURFACE
11" or 12 1/4"	8 5/8"	24#	1600'	ISOLATE WATER, OIL & GAS
7 7/8"	4 1/2"	10.5#	4150'	COVER ALL PAY

Propose to drill 17 1/2" hole to approximately 900' to set 13 3/8" surface casing and cement to surface. Will reduce hole to 11" or 12 1/4" and drill to approximately 1600' to set 8 5/8" casing. Will nipple up RAM type BOPs, reduce hole to 7 7/8" and drill to total depth. Drilling medium will be air, foam, or mud as required.

Gas Sales Are Dedicated.

XC: USGS (6), TLS, CEN RCDS, ACCGT, MEC, LAND, PARTNERS, FILE, REM, ROSWELL

IN ABOVE SPACE DESCRIBE PROPOSED PROGRAM: If proposal is to deepen or plug back, give data on present productive zone and proposed new productive zone. If proposal is to drill or deepen directionally, give pertinent data on subsurface locations and measured and true vertical depths. Give blowout preventer program, if any.

24. SIGNED R. E. Mathis TITLE REGULATORY COORDINATOR DATE 1-20-82

(This space for Federal or State office use)

PERMIT NO.	APPROVED	APPROVAL DATE	
APPROVED BY	FEB 18 1982	TITLE	APPROVAL SUBJECT TO
CONDITIONS OF APPROVAL, IF ANY:	JAMES A. GILLHAM DISTRICT SUPERVISOR		GENERAL REQUIREMENTS AND
	*See		SPECIAL STIPULATIONS
			ATTACHED
			DATE

Instructions On Reverse Side

N. MEXICO OIL CONSERVATION COMMISS.
WELL LOCATION AND ACREAGE DEDICATION PLAT

Form C-102
Supersedes C-128
Effective 1-1-65

All distances must be from the outer boundaries of the Section

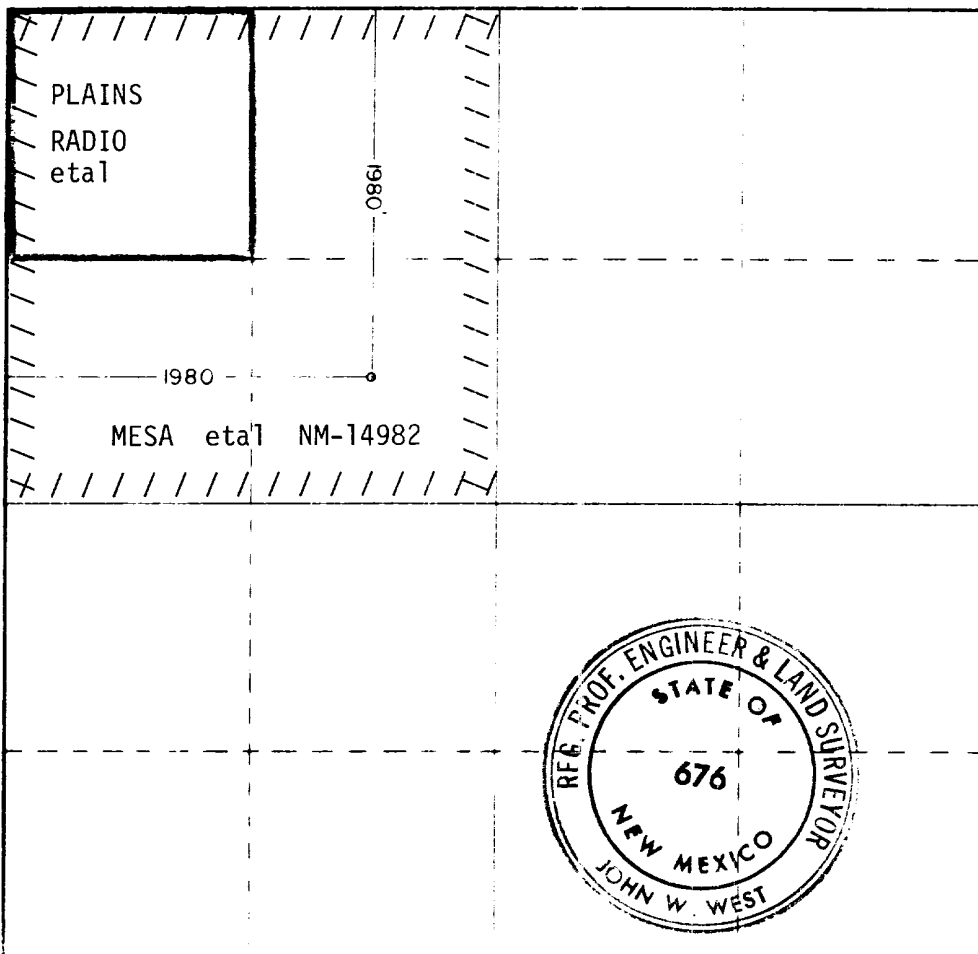
Operator MESA PETROLEUM CO.			Lease STANCEL FED. COM.			Well No. 7		
Tract Letter F	Section 22	Township 5 SOUTH	Range 24 EAST	County CHAVES				
Actual Footage Location of Well:								
1980		feet from the		NORTH		feet from the		1980
								WEST
Ground Level Elev. 4002.5	Producing Formation ABO		Foot Pecos Slope Aho UNDESIGNATED			Dedicated Acreage: NW/4 160 Acres		

- 1 Outline the acreage dedicated to the subject well by colored pencil or hachure marks on the plat below.
- 2 If more than one lease is dedicated to the well, outline each and identify the ownership thereof (both as to working interest and royalty).
- 3 If more than one lease of different ownership is dedicated to the well, have the interests of all owners been consolidated by communitization, unitization, force pooling, etc?

☐ Yes ☐ No If answer is "yes," type of consolidation Communitization in Progress

If answer is "no," list the owners and tract descriptions which have actually been consolidated. (Use reverse side of this form if necessary.) _____

No allowable will be assigned to the well until all interests have been consolidated (by communitization, unitization, forced-pooling, or otherwise) or until a non-standard unit, eliminating such interests, has been approved by the Commission.



CERTIFICATION

I hereby certify that the information contained herein is true and complete to the best of my knowledge and belief.

R. E. Mathis

Name

R. E. MATHIS

Position

REGULATORY COORDINATOR

Company

MESA PETROLEUM CO.

Date

1-20-82

I hereby certify that the well location shown on this plat was plotted from field notes of actual surveys made by me or under my supervision, and that the same is true and correct to the best of my knowledge and belief.

Date Surveyed

1-10-82

Registered Professional Engineer
No. 1-10-82

[Signature]

APPLICATION FOR PERMIT TO DRILL

MESA PETROLEUM CO.
STANCEL FEDERAL COM #7
1980' FNL & 1980' FWL, SEC 22, T5S, R24E
CHAVES COUNTY, NEW MEXICO

LEASE NO. NM-14982

In conjunction with Form 9331-C, Application For Permit to Drill subject well, the following additional information is provided:

1. Applicable portions of the GENERAL REQUIREMENTS FOR OIL AND GAS OPERATIONS ON FEDERAL LEASES, Roswell District, Geological Survey of September 1, 1980 will be adhered to.

2. Geological markers are estimated as follows:

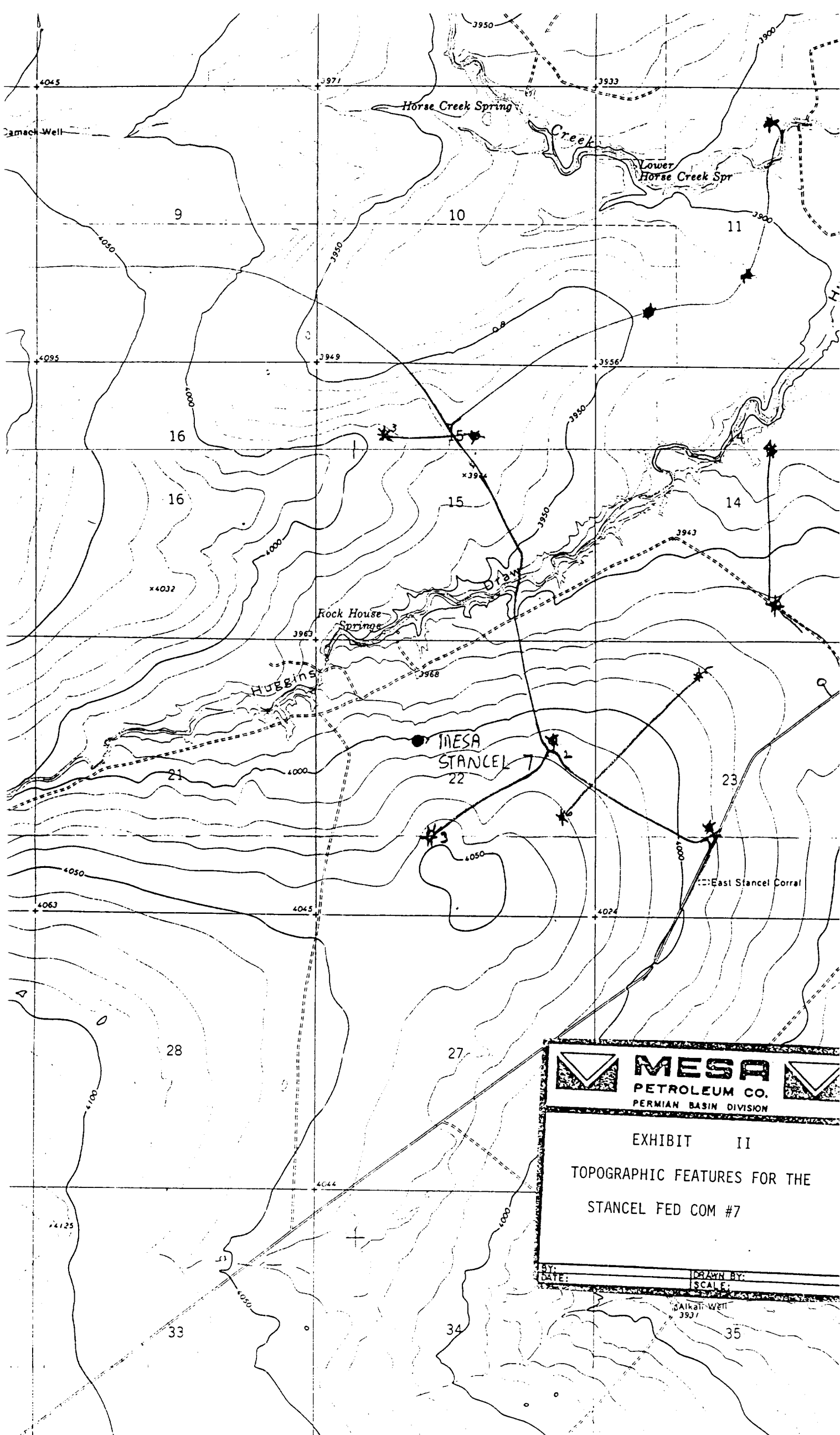
SEVEN RIVERS	Surface
SAN ANDRES	566'
GLORIETA	1425'
TUBB	2941
ABO	3578'

3. Hydrocarbon bearing strata may occur in the ABO formation(s). No fresh water is expected to be encountered below 900'.

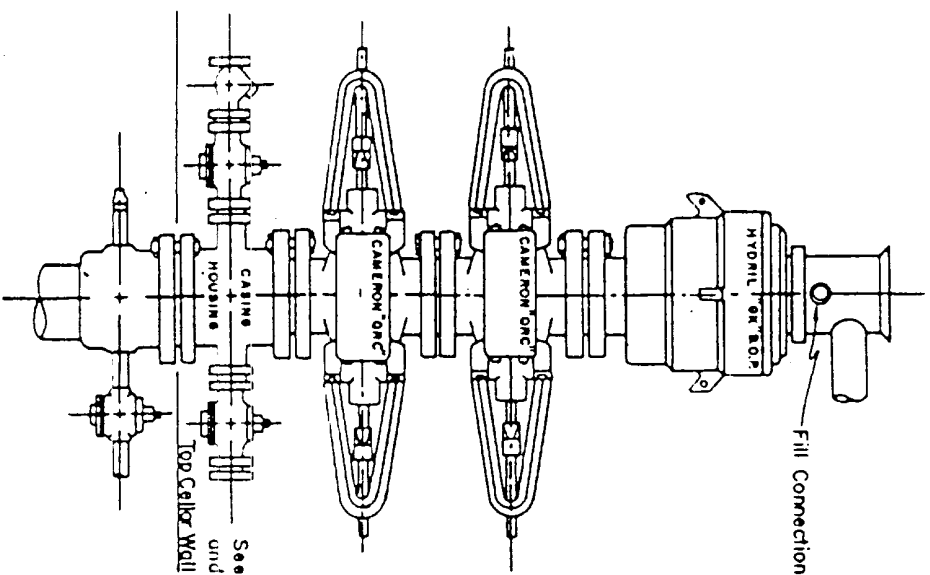
4. The Casing and Blowout Preventer Program will be determined by hole conditions as encountered. See Exhibit VI. Anticipate drilling with air or foam using ram type preventer and rotating head for well control. The 13 3/8" casing will be set at approximately 900' to protect any fresh water zones and cemented to the surface. The 8 5/8" casing will be set at approximately 1600' if water zones have been encountered or omitted if not and ram type preventers installed. Sufficient amounts and kinds of cement would be used to ensure any water, gas, or oil zones encountered are isolated and shut off down to the casing point if run. The 4 1/2" production casing will be set at total depth or shallower depending upon the depth of the deepest commercial hydrocarbon bearing strata encountered.

5. No drill stem test or coring program is planned. The logging program may consist of a GR-CNL from surface total depth and FDC from casing point to total depth.

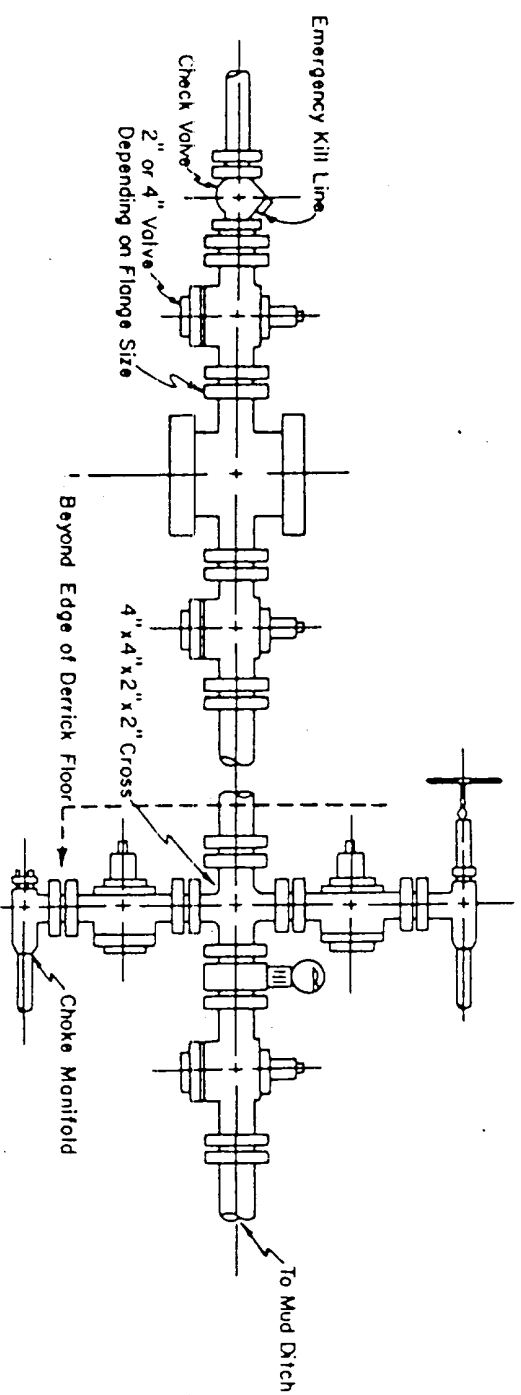
6. Anticipated drilling time is ten days with completion operations to follow as soon as a completion unit is available.



Blow-out Preventers hydril and choke manifold are all 900 Series



3,000 PSI WORKING PRESSURE
BLOW-OUT PREVENTER HOOK-UP




3,000 PSI WORKING PRESSURE
KILL, CHOKE, AND FILL CONNECTIONS

DETAIL OF 4" FLOW LINE CHOKE ASSEMBLY

Minimum assembly for 3,000 PSI working pressure will consist of three preventers.
The bottom and middle preventers may be Cameron.

NOTE: HYDRIL not installed on shallow-low pressure wells.
RAM type BOPs are API 10" X 3000 PSI

 MESA PETROLEUM CO. PERMIAN BASIN DIVISION		E X H I B I T V I	
DATE: _____ SCALE: _____		DRAWING NO.: _____	