

P. O. BOX 2088
SANTA FE, NEW MEXICO 87501

FEB 18 1982

O. C. D.
ARTESIA, OFFICE

NO. OF COPIES RECEIVED	
DISTRIBUTION	
SANTA FE	1
FILE	1
U.S.G.S.	2
LAND OFFICE	1
OPERATOR	1

APPLICATION FOR PERMIT TO DRILL, DEEPEN, OR PLUG BACK

Type of Work

DRILL ☒DEEPEN ☐PLUG BACK ☐

Type of Well

OIL ☐GAS ☒

OTHER

SINGLE ☐MULTIPLE ☐

Name of Operator

Yates Petroleum Corporation ✓

Address of Operator

207 S. 4th, Artesia, New Mexico 88210

Location of Well

UNIT LETTER C LOCATED 660 FEET FROM THE North LINE

198 FEET FROM THE West LINE OF SEC. 32 TWP. 5S RGF. 25E NADPM

5A. Indicate Type of Lease

STATE ☒FED ☐

5. State Oil & Gas Lease No.

L-6274

7. Unit Agreement Name

8. Farm or Lease Name

Dee "00" State

9. Well No.

4

10. Field and Pool, or Wildcat

X Undesignated Abo

Pecos Slaps

17. County

Chaves

19. Proposed Depth

Approx. 4300'

19A. Formation

Abo

20. Rotary or C.T.

Rotary

Elevations (Show whether D.R., K.I., etc.)

3796.3

21A. Kind & Status Plug. Bond

Blanket

21B. Drilling Contractor

Collier

22. Approx. Date Work will start

ASAP

PROPOSED CASING AND CEMENT PROGRAM

SIZE OF HOLE	SIZE OF CASING	WEIGHT PER FOOT	SETTING DEPTH	SACKS OF CEMENT	EST. TOP
14 3/4"	10 3/4"	40.5# J-55	Appr. 850'	560 sx	circulated
7 7/8" or 6 1/4"	4 1/2" or 5 1/2"	10.5# or 15.5# TD		350 sx	

We propose to drill and test the Abo and intermediate formations. Approximately 850' of surface casing will be set and cement circulated to shut off gravel and caving. If needed (loss circulation) 7 7/8" intermediate casing will be run to 1650' and cemented with enough cement calculated to tie back into the surface casing. Temperature survey will be run to determine cement top. If commercial, production casing will be run and cemented with adequate cover, perforate, and stimulate as needed for production.

MUD PROGRAM: FW gel and LCM 1650', brine to 3500', Brine & KCL water to TD, MW 10-10.2.

BOP PROGRAM: BOP's will be installed at approximately 1650' and tested daily.

GAS NOT DEDICATED.

APPROVAL VALID FOR 180 DAYS
PERMIT EXPIRES 8-23-82
UNLESS DRILLING UNDERWAY

OVER SPACE DESCRIBE PROPOSED PROGRAM: IF PROPOSAL IS TO DEEPEN OR PLUG BACK, GIVE DATA ON PRESENT PRODUCTIVE ZONE AND PROPOSED NEW PRODUCTION ZONE. GIVE SHUT-IN PREVENTER PROGRAM, IF ANY.

By certifying that the information above is true and complete to the best of my knowledge and belief,

Title Regulatory ManagerDate 2/17/82

(If space for State Use)

APPROVED BY

TITLE OIL AND GAS INSPECTOR

DATE

FEB 23 1982

CONDITIONS OF APPROVAL, IF ANY:

Filed ID-1
API & OIL Board
2-26-82

Y MEXICO OIL CONSERVATION COMM N
WELL LOCATION AND ACREAGE DEDICATION PLAT

Form C-102
 Superseded C-128
 Effective 1-1-85

All distances must be from the outer boundaries of the Section.

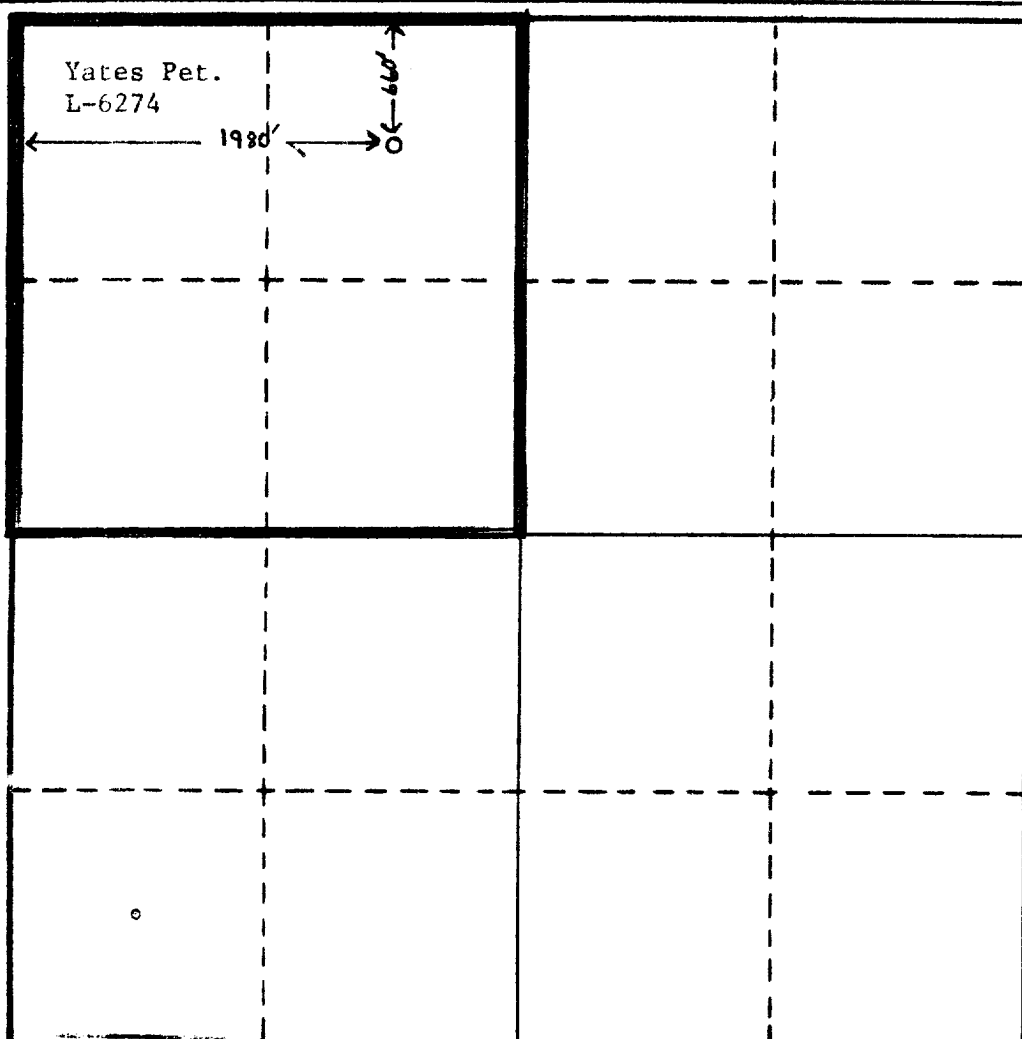
Operator YATES PETROLEUM CORPORATION			Lease Dee "00" State		Well No. 4
Unit Letter C	Section 32	Township 5 South	Range 25 East	County Chaves	
Actual Footage Location of Well: 660 feet from the North line and 1980 feet from the West line					
Ground Level Elev. 3796.3	Producing Formation Abo	Pool Undesignated Abo <i>Pecos Slope</i>		Dedicated Acreage: 160 Acres	

1. Outline the acreage dedicated to the subject well by colored pencil or hatchure marks on the plat below.
2. If more than one lease is dedicated to the well, outline each and identify the ownership thereof (both as to working interest and royalty).
3. If more than one lease of different ownership is dedicated to the well, have the interests of all owners been consolidated by communitization, unitization, force-pooling, etc?

☐ Yes ☐ No If answer is "yes," type of consolidation _____

If answer is "no," list the owners and tract descriptions which have actually been consolidated. (Use reverse side of this form if necessary.) _____

No allowable will be assigned to the well until all interests have been consolidated (by communitization, unitization, forced-pooling, or otherwise) or until a non-standard unit, eliminating such interests, has been approved by the Commission.



CERTIFICATION

I hereby certify that the information contained herein is true and complete to the best of my knowledge and belief.

Ken Beardemphl

Name

Ken Beardemphl

Position

Regulatory Coordinator

Company

Yates Petroleum Corporation

Date

2/17/82

Date Surveyed

February 12, 1982

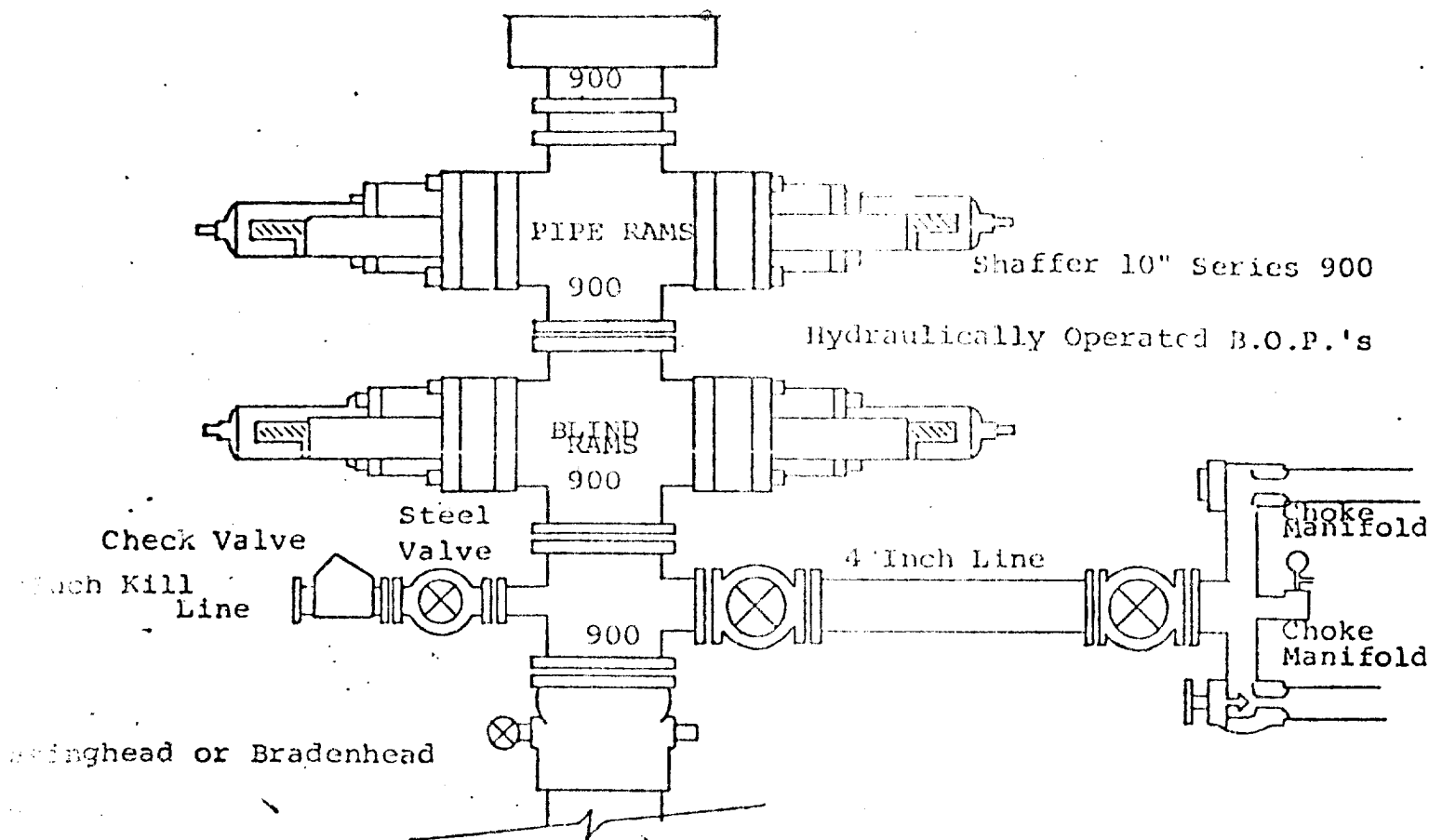
Registered Professional Engineer
 and/or Land Surveyor

Gary L. Jones

Certificate No.

1977





THE FOLLOWING CONSTITUTE MINIMUM BLOWOUT PREVENTER REQUIREMENTS

1. All preventers to be hydraulically operated with secondary manual controls installed prior to drilling out from under casing.
2. Choke outlet to be a minimum of 4" diameter.
3. Kill line to be of all steel construction of 2" minimum diameter.
4. All connections from operating manifolds to preventers to be all steel.
5. Hole or tube a minimum of one inch in diameter.
6. The available closing pressure shall be at least 15% in excess of that required with sufficient volume to operate the B.O.P.'s.
7. All connections to and from preventer to have a pressure rating equivalent to that of the B.O.P.'s.
8. Inside blowout preventer to be available on rig floor.
9. Operating controls located a safe distance from the rig floor.
10. Hole must be kept filled on trips below intermediate casing. Operator not responsible for blowouts resulting from not keeping hole full.
11. B. P. float must be installed and used below zone of first gas intrusion.

