

UNITED STATES  
DEPARTMENT OF THE INTERIOR  
GEOLOGICAL SURVEYC/SF  
APPLICATION FOR PERMIT TO DRILL, DEEPEN, OR PLUG BACK1a. TYPE OF WORK DRILL ☒ DEEPEN ☐ PLUG BACK ☐

b. TYPE OF WELL

OIL  
WELL ☐GAS  
WELL ☒

OTHER

SINGLE  
ZONE ☒MULTIPLE  
ZONE ☐

2. NAME OF OPERATOR

MESA PETROLEUM CO. ✓

3. ADDRESS OF OPERATOR

1000 VAUGHN BUILDING/MIDLAND, TEXAS 79701-4493

4. LOCATION OF WELL (Report location clearly and in accordance with any State requirements.)

At surface

660' FSL &amp; 990' FWL

At proposed prod. zone

same

14. DISTANCE IN MILES AND DIRECTION FROM NEAREST TOWN OR POST OFFICE\*

45 miles North/Northeast of Roswell, New Mexico

15. DISTANCE FROM PROPOSED\*  
LOCATION TO NEAREST  
PROPERTY OR LEASE LINE, FT.  
(Also to nearest drig. unit line, if any)

660'

18. DISTANCE FROM PROPOSED LOCATION\*  
TO NEAREST WELL, DRILLING, COMPLETED,  
OR APPLIED FOR, ON THIS LEASE, FT.

5200'

16. NO. OF ACRES IN LEASE

464.12

19. PROPOSED DEPTH

4350'

17. NO. OF ACRES ASSIGNED  
TO THIS WELL

160

20. ROTARY OR CABLE TOOLS

Rotary

21. ELEVATIONS (Show whether DF, RT, GR, etc.)

3641'

22. APPROX. DATE WORK WILL START\*

February 28, 1982

## 23. PROPOSED CASING AND CEMENTING PROGRAM

SIZE OF HOLE	SIZE OF CASING	WEIGHT PER FOOT	SETTING DEPTH	QUANTITY OF CEMENT
17 1/2"	13 3/8"	48#	900'	SURFACE
11" or 12 1/4"	8 5/8"	24#	1600'	ISOLATE WATER, OIL & GAS
7 7/8"	4 1/2"	10.5#	4350'	COVER ALL PAY

Propose to drill 17 1/2" hole to approximately 900' to set 13 3/8" surface casing and cement to surface. Will reduce hole to 11" or 12 1/4" and drill to approximately 1600' to set 8 5/8" casing. Will nipple up RAM type BOPs, reduce hole to 7 7/8" and drill to total depth. Drilling medium will be air, foam, or mud as required.

Gas Sales Are Dedicated.

XC: USGS (6), TLS, CEN RCDS, ACCGT, MEC, LAND, PARTNERS, FILE, REM, ROSWELL

IN ABOVE SPACE DESCRIBE PROPOSED PROGRAM: If proposal is to deepen or plug back, give data on present productive zone and proposed new productive zone. If proposal is to drill or deepen directionally, give pertinent data on subsurface locations and measured and true vertical depths. Give blowout preventer program, if any.

24.

SIGNED

*R. E. Mathew*

TITLE

REGULATORY COORDINATOR

DATE

1-19-82

(This space for Federal or State office use)

PERMIT NO.

APPROVED

APPROVED BY  
CONDITIONS OF APPROVAL, IF ANY

FEB 23 1982

JAMES A. GILMAN

APPROVAL DATE

APPROVAL SUBJECT TO

TITLE

GENERAL REQUIREMENTS AND  
SPECIAL STIPULATIONS  
ATTACHED

DATE

\*See Instructions On Reverse Side

*NSP 1280  
2-9-82**Posted ID-1  
API + NL Book  
2-26-82*

All distances must be from the outer boundaries of the Section.

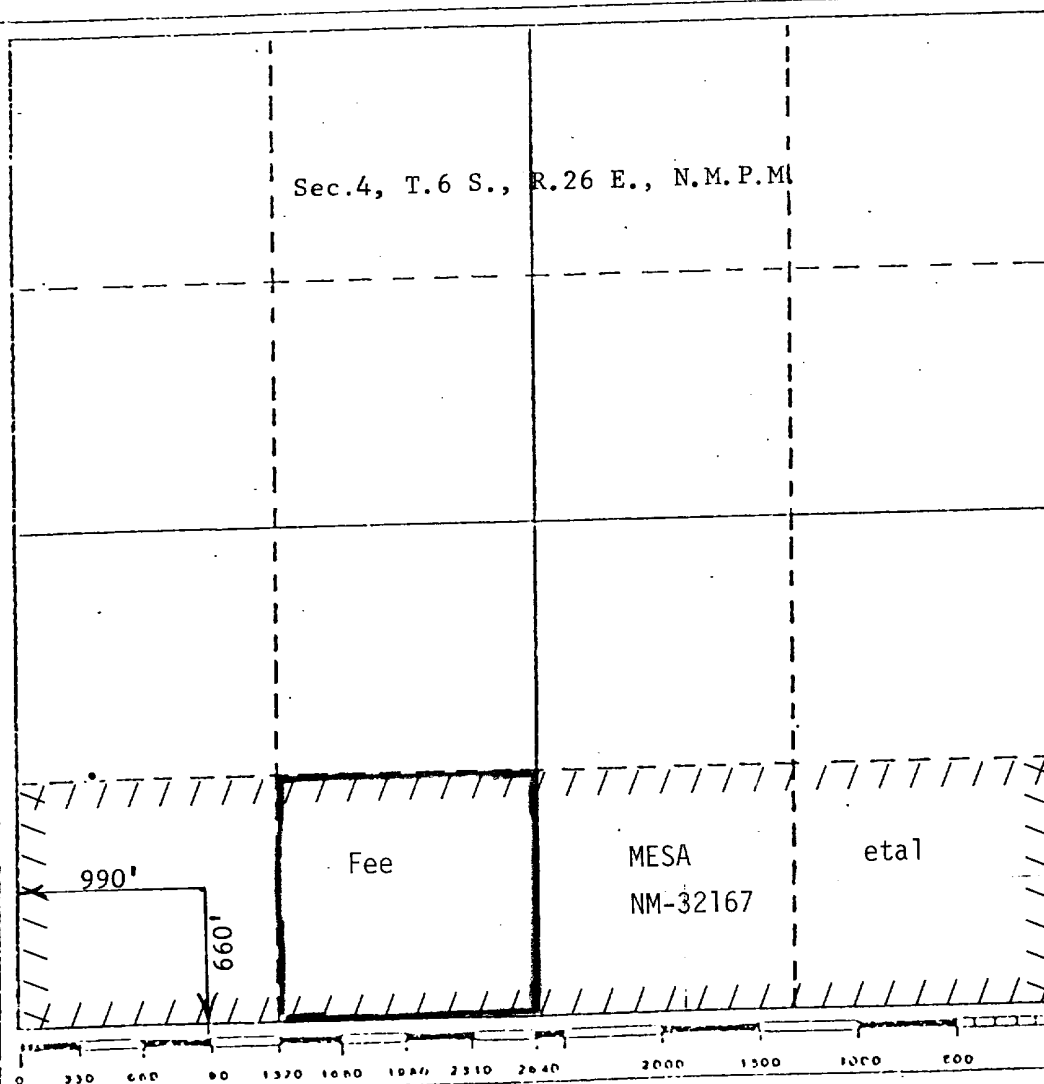
Operator <b>Mesa Petroleum Co.</b>		Lease <b>Spring Federal Com</b>		Well No. <b>3</b>
Unit Letter <b>M</b>	Section <b>4</b>	Township <b>6 South</b>	Range <b>26 East</b>	County <b>Chaves</b>
Actual Footage Location of Well: <b>990</b> feet from the <b>West</b> line and <b>660</b> feet from the <b>South</b> line				
Ground Level Elev. <b>3641</b>	Producing Formation <b>ABO</b>	Pool <b>UNDESIGNATED Pecos Slope Abo</b>		Dedicated Acreage: <b>160</b> Acres

1. Outline the acreage dedicated to the subject well by colored pencil or hachure marks on the plat below.
2. If more than one lease is dedicated to the well, outline each and identify the ownership thereof (both as to working interest and royalty).
3. If more than one lease of different ownership is dedicated to the well, have the interests of all owners been consolidated by communitization, unitization, force-pooling, etc?

☐ Yes ☐ No If answer is "yes," type of consolidation Communitization in Progress

If answer is "no," list the owners and tract descriptions which have actually been consolidated. (Use reverse side of this form if necessary.)

No allowable will be assigned to the well until all interests have been consolidated (by communitization, unitization, forced-pooling, or otherwise) or until a non-standard unit, eliminating such interests, has been approved by the Division.



CERTIFICATION

I hereby certify that the information contained herein is true and complete to the best of my knowledge and belief.

*R. E. Mathis*

Name  
**R. E. MATHIS**  
Position  
**REGULATORY COORDINATOR**  
Company  
**MESA PETROLEUM CO.**  
Date  
**1-19-82**

I hereby certify that the well location shown on this plat was plotted from field notes of actual surveys made by me or under my supervision, and that the same is true and correct to the best of my knowledge and belief.

Date Surveyed  
**January 9, 1982**  
Registered Professional Engineer and/or Licensed Surveyor  
**John D. Jaques**  
Certificate No.  
**6290**

APPLICATION FOR PERMIT TO DRILL

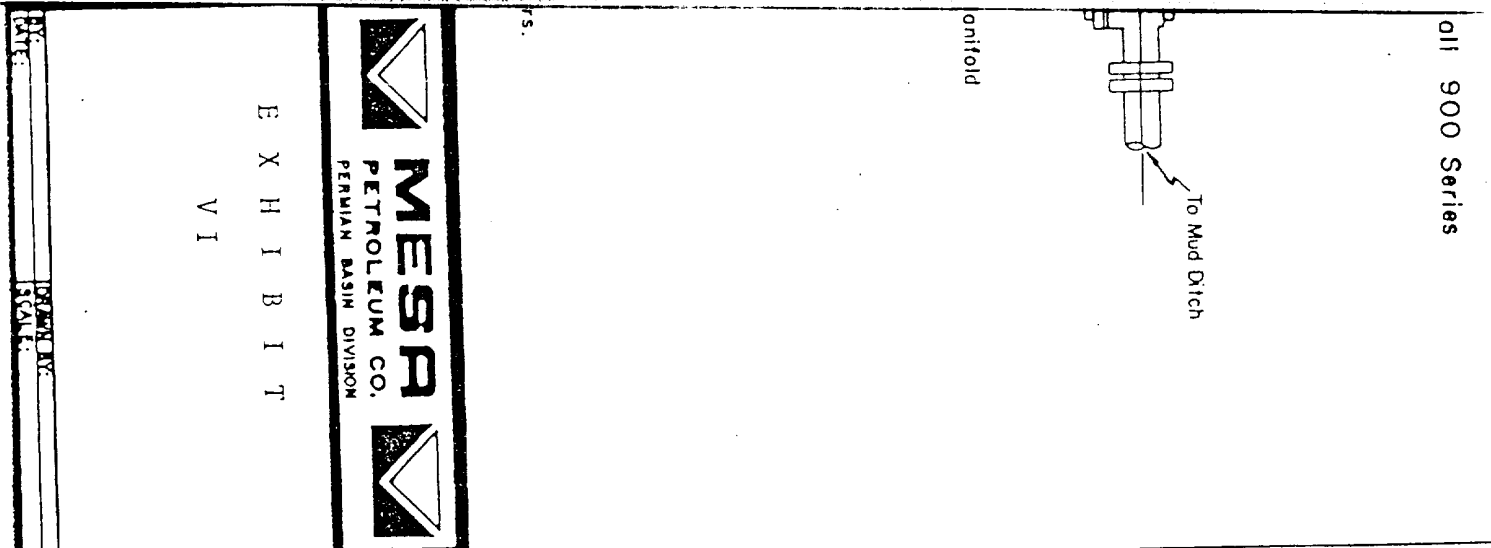
MESA PETROLEUM CO.  
SPRING FEDERAL COM #3  
660' FSL & 990' FWL, SEC 4, T6S, R26E  
CHAVES COUNTY, NEW MEXICO

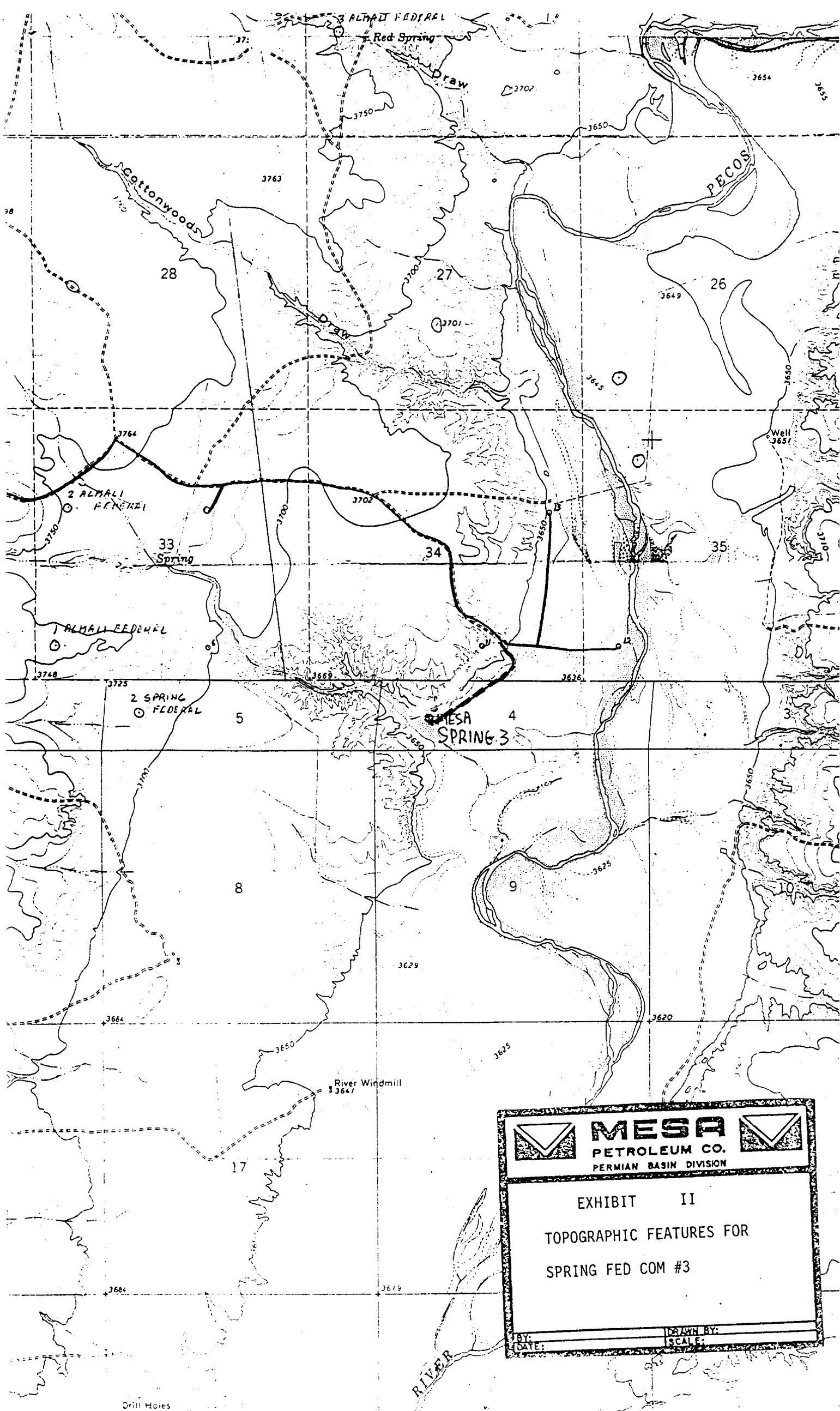
LEASE NO. NM-32167

In conjunction with Form 9331-C, Application For Permit to Drill subject well, the following additional information is provided:

1. Applicable portions of the GENERAL REQUIREMENTS FOR OIL AND GAS OPERATIONS ON FEDERAL LEASES, Roswell District, Geological Survey of September 1, 1980 will be adhered to.
2. Geological markers are estimated as follows:

SEVEN RIVERS	Surface
SAN ANDRES	548'
GLORIETA	1523'
TUBB	3006'
ABO	3665'
3. Hydrocarbon bearing strata may occur in the ABO formation(s). No fresh water is expected to be encountered below 900'.
4. The Casing and Blowout Preventer Program will be determined by hole conditions as encountered. See Exhibit VI. Anticipate drilling with air or foam using ram type preventer and rotating head for well control. The 13 3/8" casing will be set at approximately 900' to protect any fresh water zones and cemented to the surface. The 8 5/8" casing will be set at approximately 1600' if water zones have been encountered or omitted if not and ram type preventers installed. Sufficient amounts and kinds of cement would be used to ensure any water, gas, or oil zones encountered are isolated and shut off down to the casing point if run. The 4 1/2" production casing will be set at total depth or shallower depending upon the depth of the deepest commercial hydrocarbon bearing strata encountered.
5. No drill stem test or coring program is planned. The logging program may consist of a GR-CNL from surface total depth and FDC from casing point to total depth.
6. Anticipated drilling time is ten days with completion operations to follow as soon as a completion unit is available.





Drill Holes



STATE OF NEW MEXICO  
ENERGY AND MINERALS DEPARTMENT  
OIL CONSERVATION DIVISION

BRUCE KING  
GOVERNOR

LARRY KEHOE  
SECRETARY

February 9, 1982

POST OFFICE BOX 2088  
STATE LAND OFFICE BUILDING  
SANTA FE, NEW MEXICO 87501  
(505) 827-2434

Mesa Petroleum Co.  
Vaughn Building  
Suite 1000  
Midland, Texas 79701

RECEIVED

FEB 19 1982

O. C. D.  
ARTESIA, OFFICE

Attention: R. E. Mathis

Administrative Order NSP-1280

Gentlemen:

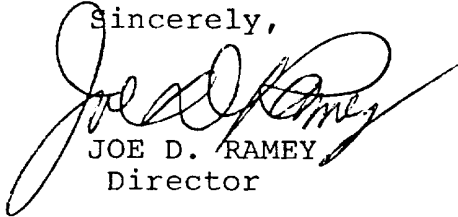
Reference is made to your application for a 160-acre non-standard proration unit consisting of the following acreage in the Abo Formation:

CHAVES COUNTY, NEW MEXICO  
TOWNSHIP 6 SOUTH, RANGE 26 EAST, NMPM  
Section 4: All of Partial Section:

It is my understanding that this unit is to be dedicated to your Spring Federal Well No. 3 located 660 feet from the South line and 990 feet from the West line of said Section 4.

By authority granted me under the provisions of Rule 104 D II, the above non-standard proration unit is hereby approved.

Sincerely,

  
JOE D. RAMEY  
Director

JDR/RLS/dr

cc: Oil Conservation Division - Artesia  
Oil & Gas Engineering Committee - Hobbs  
U. S. Geological Survey - Artesia