

UNITED STATES
DEPARTMENT OF THE INTERIOR
GEOLOGICAL SURVEY

30-005-61441

5. LEASE DESIGNATION AND SERIAL NO.

NM 18483

6. IF INDIAN, ALLOTTEE OR TRIBE NAME

7. UNIT AGREEMENT NAME

8. FARM OR LEASE NAME

Morton "SZ" Federal

9. WELL NO.

1

10. FIELD AND POOL, OR WILDCAT

Wildcat Unit

11. SEC., T., R., M., OR BLK.
AND SURVEY OR AREA

Sec. 10-T8S-R25E

12. COUNTY OR PARISH 13. STATE

Chaves

NM

APPLICATION FOR PERMIT TO DRILL, DEEPEN, OR PLUG BACK

1a. TYPE OF WORK

DRILL ☒DEEPEN ☐PLUG BACK ☐

b. TYPE OF WELL

OIL
WELL ☐GAS
WELL ☒OTHER ☒SINGLE
ZONE ☐

RECEIVED

ZONE ☐

2. NAME OF OPERATOR

Yates Petroleum Corporation

FEB 26 1982

3. ADDRESS OF OPERATOR

207 S. 4th, Artesia, NM 88210

4. LOCATION OF WELL (Report location clearly and in accordance with any State requirements.)

O. C. D.
ARTESIA, OFFICE

At surface: 660' FSL & 1980' FWL

At proposed prod. zone

same

14. DISTANCE IN MILES AND DIRECTION FROM NEAREST TOWN OR POST OFFICE*

Approximately 22 miles NNE of Roswell, NM.

15. DISTANCE FROM PROPOSED*

LOCATION TO NEAREST

PROPERTY OR LEASE LINE, FT.

(Also to nearest drlg. unit line, if any)

660'

16. NO. OF ACRES IN LEASE

160

17. NO. OF ACRES ASSIGNED
TO THIS WELL

160

18. DISTANCE FROM PROPOSED LOCATION*

TO NEAREST WELL, DRILLING COMPLETED,
OR APPLIED FOR, ON THIS LEASE, FT.

19. PROPOSED DEPTH

4150'

20. ROTARY OR CABLE TOOLS

Rotary

21. ELEVATIONS (Show whether DF, RT, GR, etc.)

3636.2 GL

22. APPROX. DATE WORK WILL START*

PROPOSED CASING AND CEMENTING PROGRAM

SIZE OF HOLE	SIZE OF CASING	WEIGHT PER FOOT	SETTING DEPTH	QUANTITY OF CEMENT
12 1/4"	8 5/8"	40.5# J-55	Approx. 1030'	680 sx. circulated
7 7/8"	4 1/2"	10.5#	TD	350 sx.

We propose to drill and test the Abo and intermediate formations. Approximately 1030' of surface casing will be set and cement circulated to shut off gravel and caving. If needed (lost circulation) 7" intermediate casing will be run to 1500' and cemented with enough cement calculated to tie back into the surface casing. Temperature survey will be run to determine cement top. If commercial, production casing will be run and cemented with adequate cover, perforate, and stimulate as needed for production.

MUD PROGRAM: FW gel and LCM to 1030', Brine to 3500'. Brine & KCL water to TD.

BOP PROGRAM: BOP's will be installed at approximately 1030' and tested daily.

GAS NOT DEDICATED.

IN ABOVE SPACE DESCRIBE PROPOSED PROGRAM: If proposal is to deepen or plug back, give data on present productive zone and proposed new productive zone. If proposal is to drill or deepen directionally, give pertinent data on subsurface locations and measured and true vertical depths. Give blowout preventer program, if any.

24.

SIGNED

TITLE Regulatory Manager

DATE 1/25/82

(This space for Federal or State office use)

PERMIT NO.

APPROVAL DATE

DATE

APPROVED BY

TITLE

CONDITIONS OF APPROVAL, IF ANY

APPROVED

FEB 25 1982

JAMES A. GILLHAM
DISTRICT SUPERVISORAPPROVAL SUBJECT TO
GENERAL REQUIREMENTS AND
SPECIAL STIPULATIONS
ATTACHED201-114-1
3-5-82

NEW MEXICO OIL CONSERVATION COMMISSION
WELL LOCATION AND ACREAGE DEDICATION PLAT

Form C-102
Supersedes C-128
Effective 1-1-65

All distances must be from the outer boundaries of the Section.

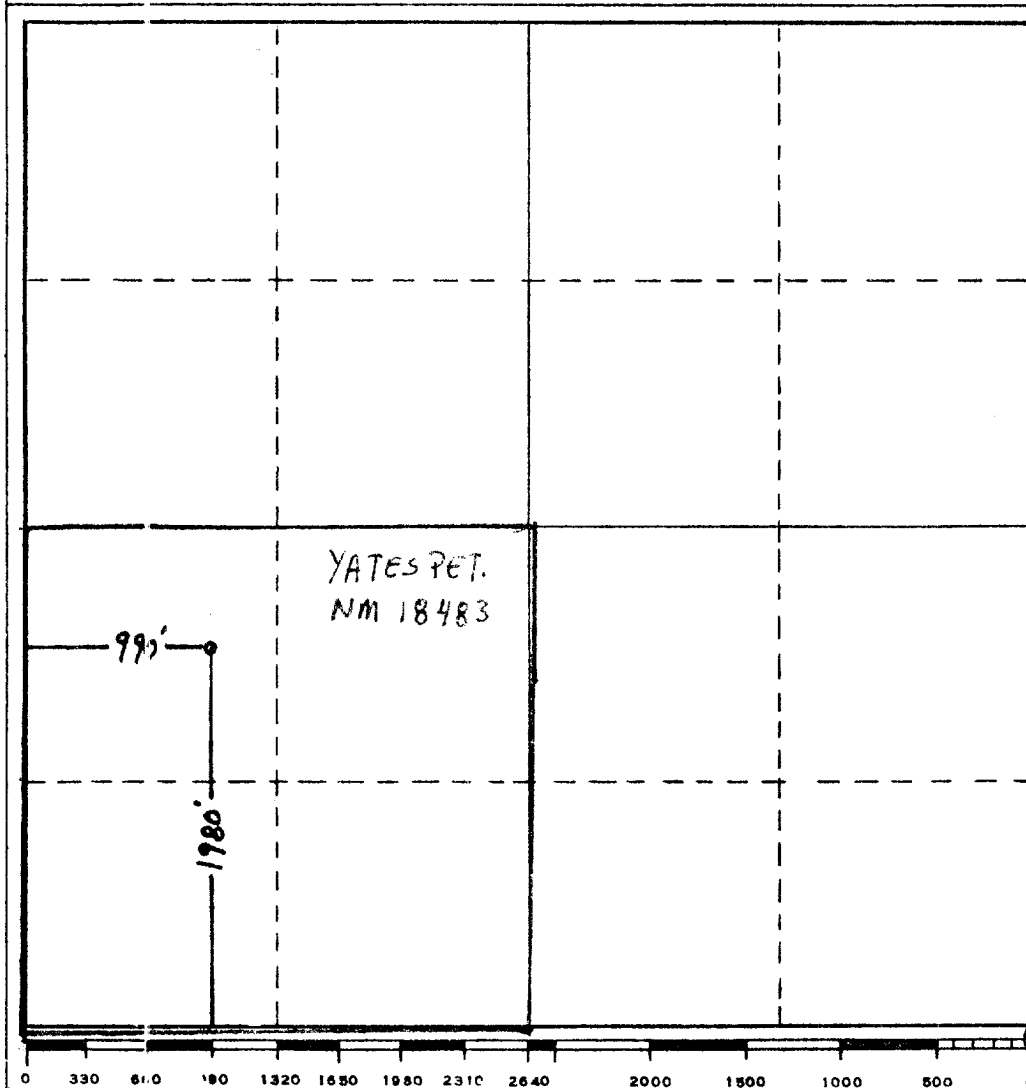
Operator YATES PETROLEUM CORPORATION			Lease Morton SZ Federal		Well No. 1
Unit Letter L	Section 10	Township 8 South	Range 25 East	County Chaves	
Actual Footage Location of Well: 1980 feet from the South line and 990 feet from the West line					
Ground Level Elev. 3641	Producing Formation Abo		Pool Undes. Abo		Dedicated Acreage: 160 Acres

1. Outline the acreage dedicated to the subject well by colored pencil or hachure marks on the plat below.
2. If more than one lease is dedicated to the well, outline each and identify the ownership thereof (both as to working interest and royalty).
3. If more than one lease of different ownership is dedicated to the well, have the interests of all owners been consolidated by communitization, unitization, force-pooling, etc?

☐ Yes ☐ No If answer is "yes," type of consolidation _____

If answer is "no," list the owners and tract descriptions which have actually been consolidated. (Use reverse side of this form if necessary.) _____

No allowable will be assigned to the well until all interests have been consolidated (by communitization, unitization, force-pooling, or otherwise) or until a non-standard unit, eliminating such interests, has been approved by the Commission.



CERTIFICATION

I hereby certify that the information contained herein is true and complete to the best of my knowledge and belief.

Gliserio Rodriguez
Name

Gliserio Rodriguez

Position
Regulatory Manager

Company
Yates Petroleum Corp.

Date
2-18-82

I hereby certify that the well location shown on this plat was plotted from field notes of actual survey made by me or under my supervision and that the same is true and correct to the best of my knowledge and belief.



Date Surveyed
2-17-82

Registered Professional Engineer and/or Land Surveyor

Mary L. Jones
Certificate No.

7977

UNITED STATES
DEPARTMENT OF THE INTERIOR
GEOLOGICAL SURVEY

SUNDRY NOTICES AND REPORTS ON WELLS

(Do not use this form for proposals to drill or to deepen or plug back to a different reservoir. Use Form 9-331-C for such proposals.)

1. oi ☐ gas ☒ other
well well
2. NAME OF OPERATOR
Yates Petroleum Corporation ✓
3. ADDRESS OF OPERATOR
207 S. 4th, Artesia, New Mexico 88210
4. LOCATION OF WELL (REPORT LOCATION CLEARLY. See space 17
below.)
AT SURFACE: 1980' FSL & 990' FWL
AT TOP PROD. INTERVAL:
AT TOTAL DEPTH: Same
16. CHECK APPROPRIATE BOX TO INDICATE NATURE OF NOTICE,
REPORT, OR OTHER DATA

REQUEST FOR APPROVAL TO:

TEST WATER SHUT-OFF ☐
 FRACTURE TREAT ☐
 SHOOT OR ACIDIZE ☐
 REPAIR WELL ☐
 PULL OR ALTER CASING ☐
 MULTIPLE COMPLETE ☐
 CHANGE ZONES ☐
 ABANDON* ☐
 (other) moved location ☐

SUBSEQUENT REPORT OF:

--	--	--	--	--	--	--

5. LEASE
NM 18483
6. IF INDIAN, ALLOTTEE OR TRIBE NAME
7. UNIT AGREEMENT NAME
8. FARM OR LEASE NAME
Morton "SZ" Federal
9. WELL NO.
1
10. FIELD OR WILDCAT NAME
~~Wildcat~~ *Unit 18483*
11. SEC., T., R., M., OR BLK. AND SURVEY OR AREA
Sec. 10-T8S-R25E
12. COUNTY OR PARISH
Chaves
13. STATE
NM
14. API NO.
15. ELEVATIONS (SHOW DF, KDB, AND WD)
3641.0 GL

(NOTE: Report results of multiple completion or zone change on Form 9-330.)

17. DESCRIBE PROPOSED OR COMPLETED OPERATIONS (Clearly state all pertinent details, and give pertinent dates, including estimated date of starting any proposed work. If well is directionally drilled, give subsurface locations and measured and true vertical depths for all markers and zones pertinent to this work.)*

We propose to change the location of the above captioned well

FROM: 660' FSL & 1980' FWL

TO: 1980' FSL & 990' FWL

NEW PLAT ENCLOSED.

Subsurface Safety Valve: Manu. and Type

18. I hereby certify that the foregoing is true and correct

SIGN'D Cy Cowan TITLE Reg. Coordinator DATE 2/24/82

APPROVED BY _____
CONDITIONS OF APPROVAL, IF ANY: _____

APPROVED

FEB 25 1982

JAMES A. GILLHAM
DISTRICT SUPERVISOR

*See Instructions on Reverse Side

NEW MEXICO OIL CONSERVATION COMMISSION
LOCATION AND ACREAGE DEDICATION PLAT

Form C-102
Supersedes C-128
Effective 1-1-65

All distances must be from the outer boundaries of the Section.

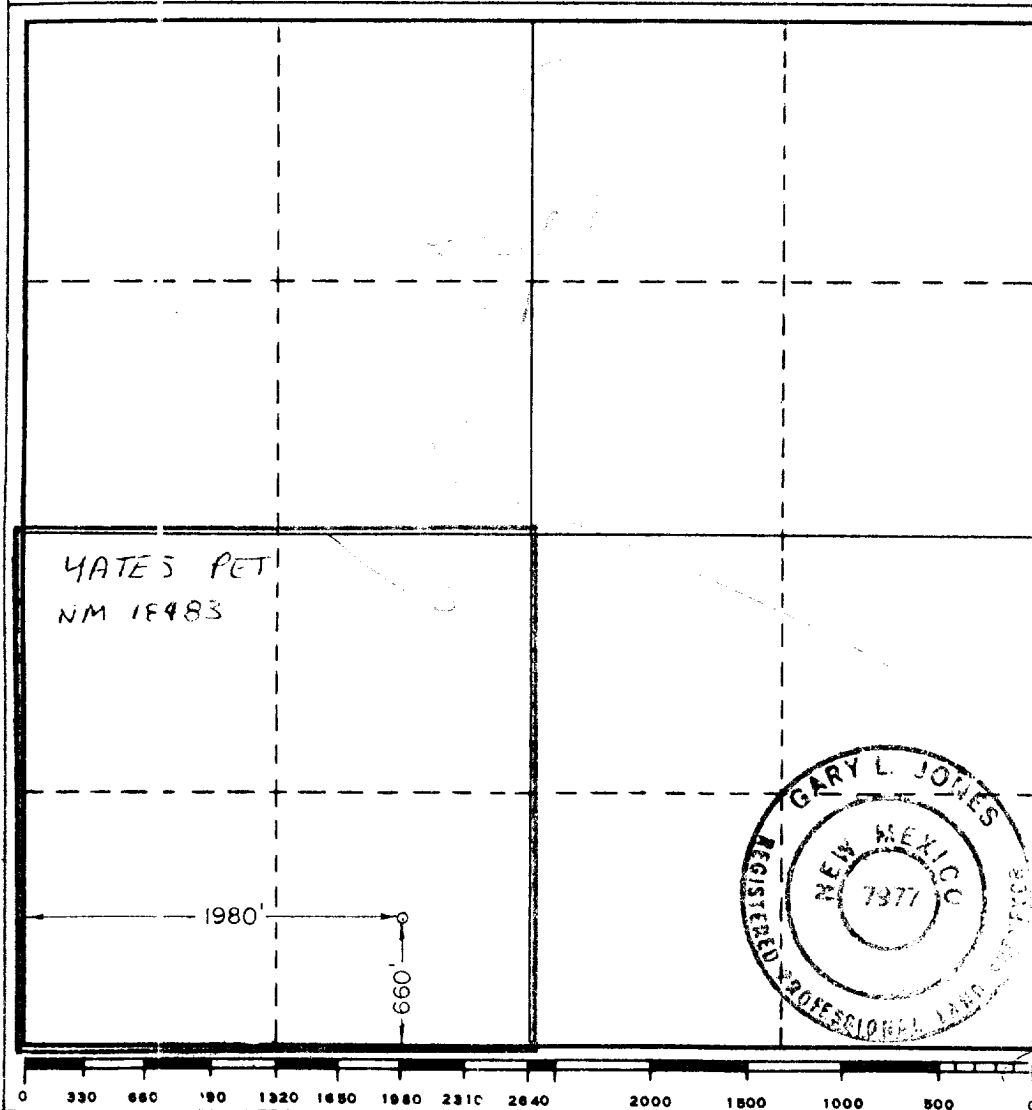
Operator YATES PETROLEUM CORPORATION			Lease Morton SZ Federal			Well No. 1
Unit Letter N	Section 10	Township 8 South	Range 25 East	County Chaves		
Actual Footage Location of Well: 660 feet from the South line and 1980 feet from the West line						
Ground Level Elev. 3636.2'	Producing Formation ABO		Pool Under Abo		Dedicated Acreage: 160 Acres	

1. Outline the acreage dedicated to the subject well by colored pencil or hachure marks on the plat below.
2. If more than one lease is dedicated to the well, outline each and identify the ownership thereof (both as to working interest and royalty).
3. If more than one lease of different ownership is dedicated to the well, have the interests of all owners been consolidated by communitization, unitization, force-pooling, etc?

☐ Yes ☐ No If answer is "yes," type of consolidation _____

If answer is "no," list the owners and tract descriptions which have actually been consolidated. (Use reverse side of this form if necessary.) _____

No allowable will be assigned to the well until all interests have been consolidated (by communitization, unitization, forced pooling, or otherwise) or until a non-standard unit, eliminating such interests, has been approved by the Commission.



CERTIFICATION

I hereby certify that the information contained herein is true and complete to the best of my knowledge and belief.

Gliserio Rodriguez
Name

Gliserio Rodriguez

Position

Regulatory Manager

Company

Yates Petroleum Corporation

Date

1/21/82

I hereby certify that the well location shown on this plat was plotted from field notes of actual surveys made by me or under my supervision, and that the same is true and correct to the best of my knowledge and belief.

Date Surveyed

1/18/82

Registered Professional Engineer and/or Land Surveyor

Gary L. Jones
Certificate No.

7977

Yates Petroleum Corporation
Morton "SZ" Federal #1
~~660' FSL and 1980' FWL~~
Section 10-T8S-R25E
Chaves County, New Mexico

In conjunction with Form 9-331C, Application for Permit to Drill subject well, Yates Petroleum Corporation submits the following ten items of pertinent information in accordance with USGS requirements.

1. The geological surface formation is quaternary alluvium.
2. The estimated tops of geologic markers are as follows:

San Andres	360'
Glorieta	1470'
Fullerton	2915'
Abo	3630'
TD	4150'

3. The estimated depths at which anticipated water, oil, or gas formations are expected to be encountered.

Water: Approximately 225'

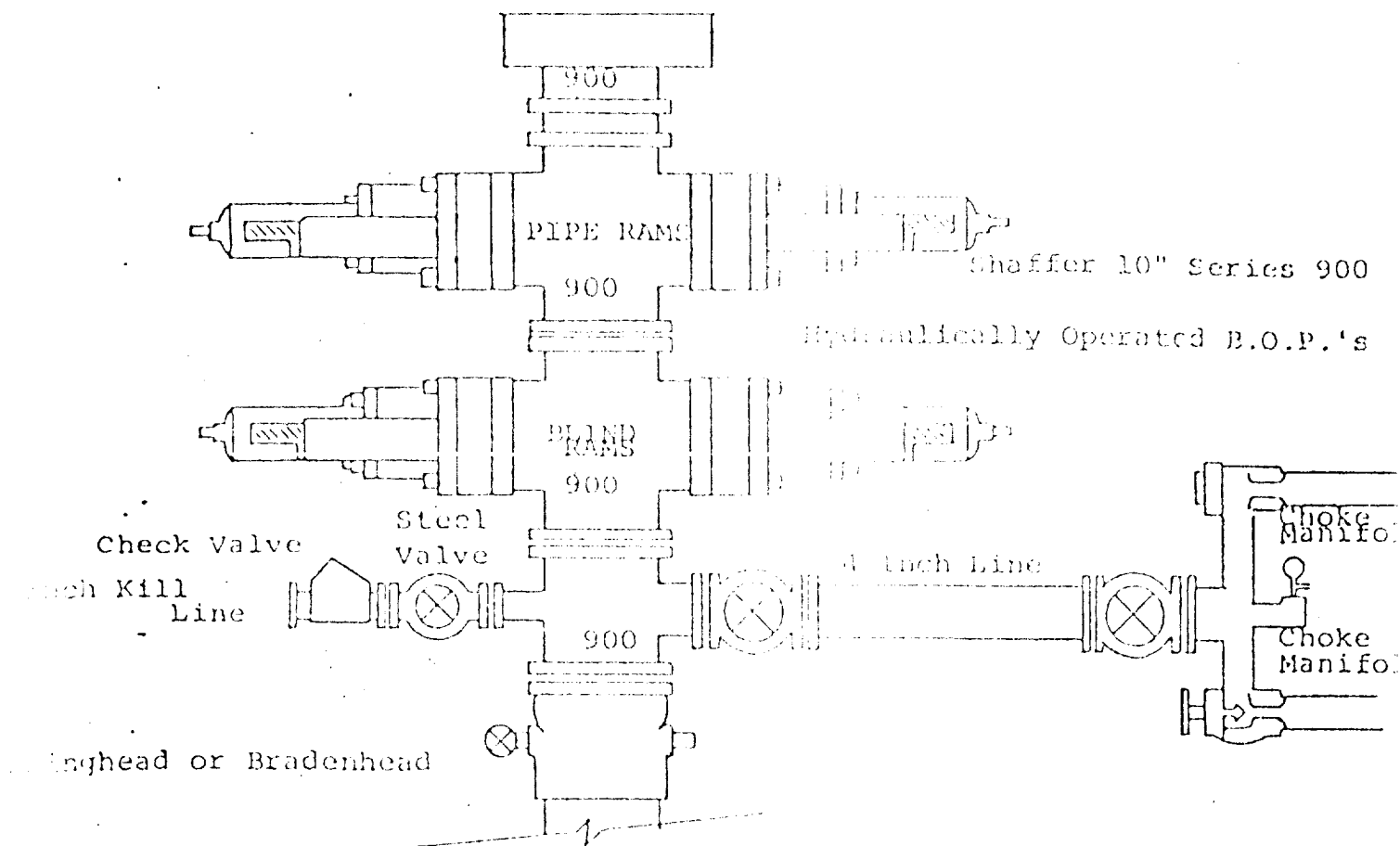
Oil or Gas: 3650'

4. Proposed Casing Program: See Form 9-331C.
5. Pressure Control Equipment: See Form 9-331C and Exhibit B.
6. Mud Program: See Form 9-331C.
7. Auxiliary Equipment: Kelly Cock; pit level indicators and flow sensor equipment; sub with full-opening valve on floor, drill pipe connection.
8. Testing, Logging and Coring Program:

Samples: Surface casing to TD
DST's: As warranted
Logging: Intermediate casing to TD
CNL-FDC TD to casing with GR-CNL on to surface and DLL from TD to casing with selected min. R_x O.

9. No abnormal pressures or temperatures are anticipated.
10. Anticipated starting date: As soon as possible after approval.

EXHIBIT B



FOLLOWING CONSTITUTE MINIMUM BLOWOUT PREVENTER REQUIREMENTS

- All preventers to be hydraulically operated with secondary manual control installed prior to drilling out from under casing.
- Choke outlet to be a minimum of 4" diameter.
- Kill line to be of all steel construction of 2" minimum diameter.
- All connections from operating manifolds to preventers to be all steel, hole or tube a minimum of one inch in diameter.
- The available closing pressure shall be at least 15% in excess of that required with sufficient volume to operate the B.O.P.'s.
- All connections to and from preventer to have a pressure rating equivalent to that of the B.O.P.'s.
- Inside blowout preventer to be available on rig floor.
- Operating controls located a safe distance from the rig floor.
- Hole must be kept filled on trips below intermediate casing. Operator not responsible for blowouts resulting from not keeping hole full.
- D. P. float must be installed and used below zone of first gas intrusion