

STATE OF NEW MEXICO
ENERGY AND MINERALS DEPARTMENT

CONSERVATION DIVISION

P. O. BOX 2088

SANTA FE, NEW MEXICO 87501

30-005-61446

Form C-101
Revised 10-1-78

NO. OF COPIES RECEIVED	
DISTRIBUTION	
SANTA FE	1
FILE	1
U.S.G.S.	2
LAND OFFICE	1
OPERATOR	1

MAR - 3 1982

5A. Indicate Type of Lease
STATE ☒ REC ☐
5. State Oil & Gas Lease No.
LG 5563

APPLICATION FOR PERMIT TO DRILL, DEEPEN, OR PLUG BACK

1a. Type of Work
DRILL ☒ DEEPEN ☐ PLUG BACK ☐
b. Type of Well
OIL WELL ☐ GAS WELL ☒ OTHER ☐ SINGLE ZONE ☒ MULTIPLE ZONE ☐
2. Name of Operator
TRANSWESTERN GAS SUPPLY COMPANY ✓
3. Address of Operator
P.O. Box 2521, Houston, TX 77001
4. Location of Well
UNIT LETTER J LOCATED 1980' FEET FROM THE South LINE
AND 1980' FEET FROM THE East LINE OF SEC. 25 TWP. 5S RGE. 22E NMPM
12. County
Chaves
19. Proposed Depth
4500'
19A. Formation
ABO
20. Rotary or C.T.
Rotary
21. Elevations (show whether DF, RT, etc.)
4126 GL
21A. Kind & Status Plug. Bond
Blanket
21B. Drilling Contractor
Unknown
22. Approx. Date Work will start
As soon as possible

23. PROPOSED CASING AND CEMENT PROGRAM

SIZE OF HOLE	SIZE OF CASING	WEIGHT PER FOOT	SETTING DEPTH	SACKS OF CEMENT	EST. TOP
17 1/2"	13 3/8"	48.0# K-55	700'±	600 ± sx	Circulate
12 1/4"	8 5/8"	24.0# K-55	1500'±	950 ± sx	Circulate
7 7/8"	4 1/2"	10.5# J-55	TD	250 ± sx	3300'

Propose to drill with air to 4500'± to test Abo and intermediate formations.

Approximately 700' of 13 3/8" surface casing will be set to prevent lost circulation and protect the fresh water zones. Will cement 8 5/8" casing at about 1500', install bradenhead and 10" double ram 3000 psi. BOP. BOP equipment will be tested daily. Set 4 1/2" production casing and cement adequately to cover Abo.

Approval for access from Hwy.285 has been obtained from the State Highway Department.

Gas is dedicated.

APPROVAL VALID FOR 180 DAYS
PERMIT EXPIRES 9-5-82
UNLESS DRILLING UNDERWAY

Posted ID-1
API + NL Book
3-5-82

IN ABOVE SPACE DESCRIBE PROPOSED PROGRAM; IF PROPOSAL IS TO DEEPEN OR PLUG BACK, GIVE DATA ON PRESENT PRODUCTIVE ZONE AND PROPOSED NEW PRODUCTIVE ZONE, GIVE BLOWOUT PREVENTER PROGRAM, IF ANY.

I hereby certify that the information above is true and complete to the best of my knowledge and belief.

Signed Jerry H. Long Title Agent Date March 2, 1982
(This space for State Use)

APPROVED BY Mike Walker TITLE OIL AND GAS INSPECTOR DATE MAR - 5 1982
CONDITIONS OF APPROVAL, IF ANY:

MEXICO OIL CONSERVATION COMMISSION
WELL LOCATION AND ACREAGE DEDICATION PLAT

Form O-11,
 Supersedes O-10
 Effective 1-1-81

All distances must be from the outer boundaries of the Section

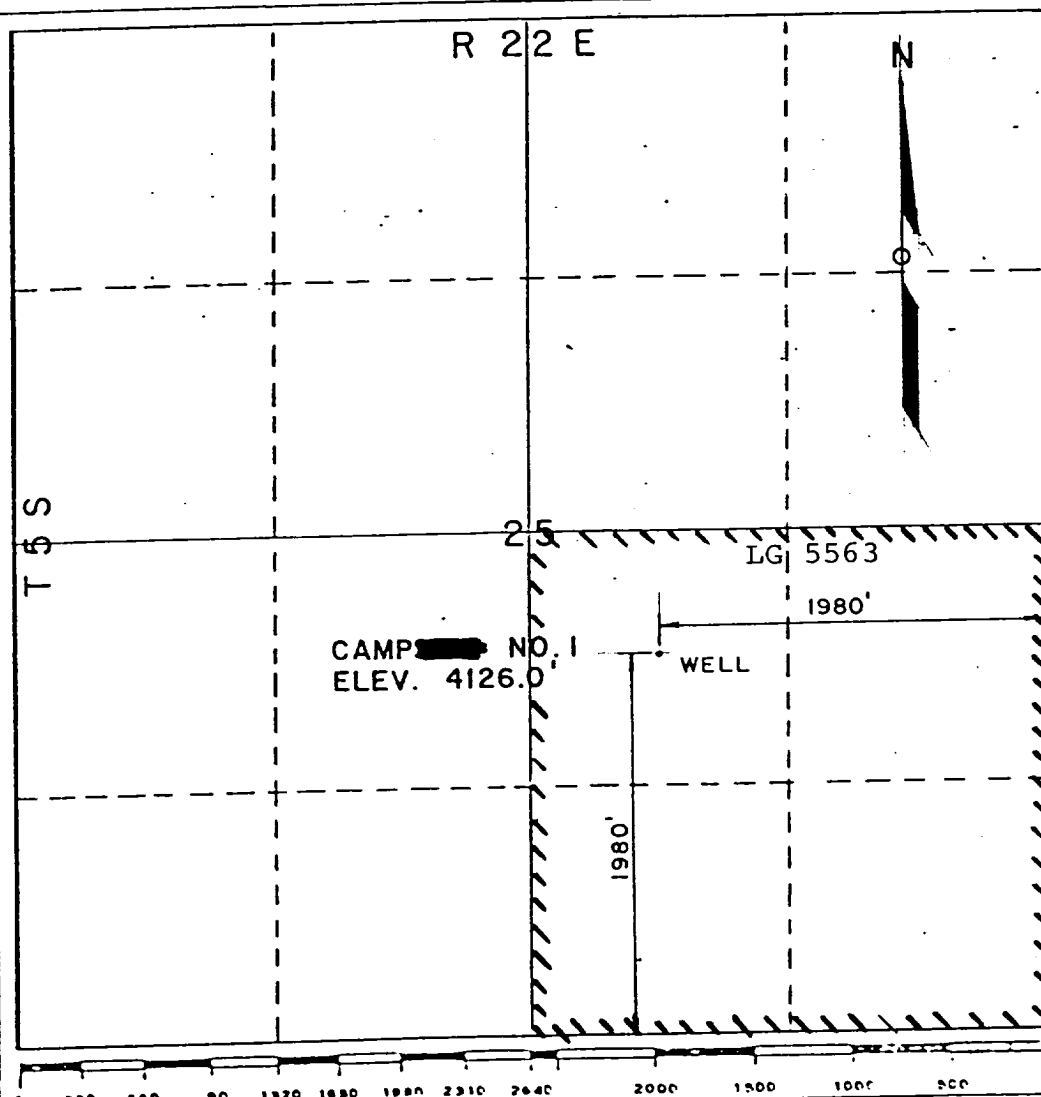
TRANSWESTERN GAS SUPPLY CO.			Camp State		Well No. 1
Unit Letter J	Section 25	Township 5-S	Range 22-E	County Chaves	
Actual Footage Location of Well:					
1980	feet from the	SOUTH	line and	1980	feet from the EAST line
Ground Level Elev. 4126.0'	Producing Formation ABO		Pool Wildcat		Dedicated Acreage: (SE$\frac{1}{4}$) 160 Acres

1. Outline the acreage dedicated to the subject well by colored pencil or hatchure marks on the plat below.
2. If more than one lease is dedicated to the well, outline each and identify the ownership thereof (both as to working interest and royalty). **Single Lease**
3. If more than one lease of different ownership is dedicated to the well, have the interests of all owners been consolidated by communitization, unitization, force-pooling, etc?

☐ Yes ☐ No If answer is "yes," type of consolidation _____

If answer is "no," list the owners and tract descriptions which have actually been consolidated. (Use reverse side of this form if necessary.) _____

No allowable will be assigned to the well until all interests have been consolidated (by communitization, unitization, forced-pooling, or otherwise) or until a non-standard unit, eliminating such interests, has been approved by the Commission.



CERTIFICATION

I hereby certify that the information contained herein is true and complete to the best of my knowledge and belief.

Jerry W. Long
 Name

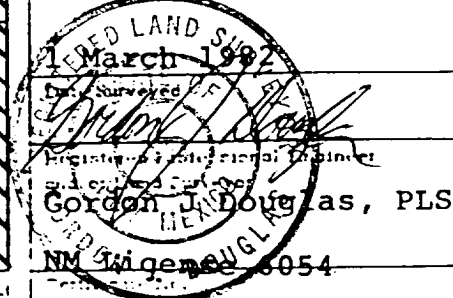
JERRY W. LONG

Position
Agent

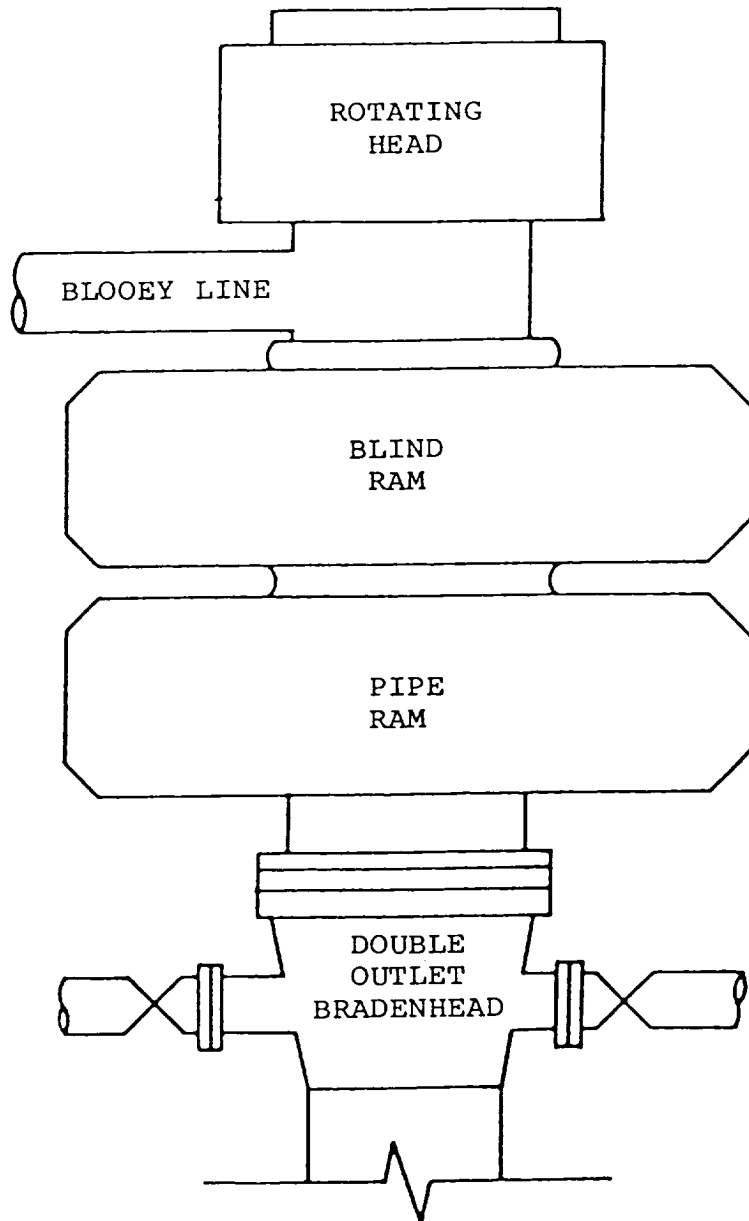
Company
TRANSWESTERN GAS SUPPLY CO

Date
March 2, 1982

I hereby certify that the well location shown on this plat was plotted from field notes of actual surveys made by me or under my supervision, and that the same is true and correct to the best of my knowledge and belief.



TRANSWESTERN GAS SUPPLY COMPANY
No.1 Camp State
1980'/S 1980'/E Sec.25-5S-22E
Chaves County, N.M.



BOP STACK

3000 PSI WORKING PRESSURE

TRANSWESTERN GAS SUPPLY COMPANY

No. 1 Camp State

1980'S 1980'E Sec. 25-5S-22E

Chaves County, N.M.

STATES
OF THE INTERIOR
SURVEY

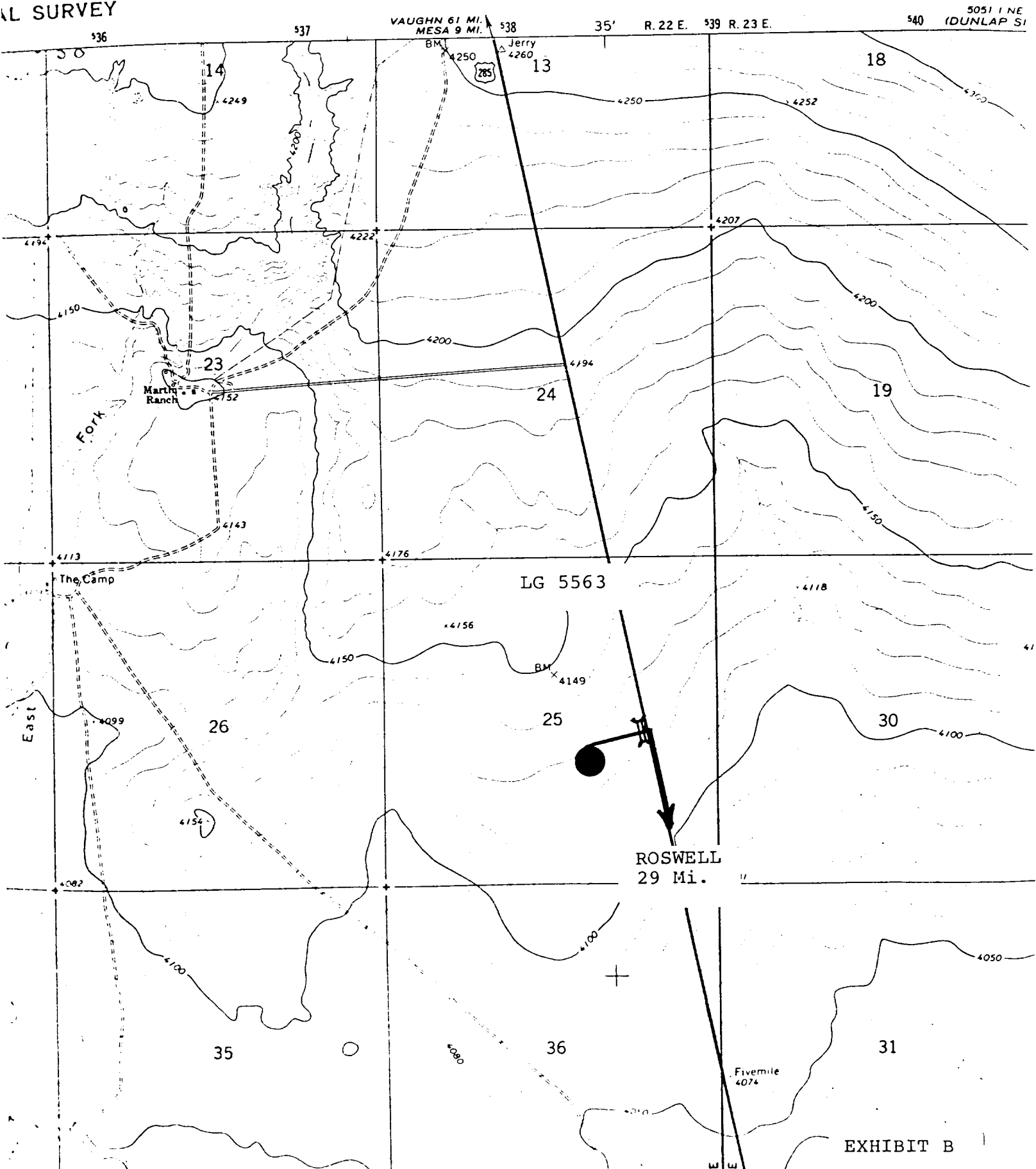


EXHIBIT B