

UNITED STATES N. M. OIL CONSERVATION  
DEPARTMENT OF THE INTERIOR  
GEOLOGICAL SURVEY  
Artesia, NM 88210

30-005-61455

SE DESIGNATION AND SERIAL NO.

A-NM-11795

## APPLICATION FOR PERMIT TO DRILL, DEEPEN, OR PLUG BACK

## 1a. TYPE OF WORK

DRILL ☒DEEPEN ☐PLUG BACK ☐

## b. TYPE OF WELL

OIL WELL ☐GAS WELL ☒

OTHER

SINGLE ZONE ☒MULTIPLE ZONE ☐

## 2. NAME OF OPERATOR

Jack Grynberg and Associates.

## 3. ADDRESS OF OPERATOR

1050 17th Street, Suite 1950, Denver, Colorado 80265

## 4. LOCATION OF WELL (Report location clearly and in accordance with any State requirements.)\*

At surface

1980' FSL and 660' FWL of Sec. 12, T 6 S - R 24 E

At proposed prod. zone

1980' FSL and 660' FWL of Sec. 12, T 6 S - R 24 E

## 14. DISTANCE IN MILES AND DIRECTION FROM NEAREST TOWN OR POST OFFICE\*

25 Miles NNE of Roswell, New Mexico

## 10. DISTANCE FROM PROPOSED\*

LOCATION TO NEAREST  
PROPERTY OR LEASE LINE, FT.  
(Also to nearest drilg. unit line, if any)

1980'

## 16. NO. OF ACRES IN LEASE

2,360.00

## 17. NO. OF ACRES ASSIGNED

TO THIS WELL 160

## 18. DISTANCE FROM PROPOSED LOCATION\*

TO NEAREST WELL, DRILLING, COMPLETED,  
OR APPLIED FOR, ON THIS LEASE, FT.

1320'

## 19. PROPOSED DEPTH

4,200'

## 20. ROTARY OR CABLE TOOLS

Rotary

## 21. ELEVATIONS (Show whether DF, RT, GR, etc.)

4017.0' GR

## 22. APPROX. DATE WORK WILL START\*

March 2, 1982

## 23.

## PROPOSED CASING AND CEMENTING PROGRAM

SIZE OF HOLE	SIZE OF CASING	WEIGHT PER FOOT	SETTING DEPTH	QUANTITY OF CEMENT
13-1/2"	10-3/4"	32.75	900'	good returns to surface, circulated
7-7/8"	4-1/2"	10.75	4200'	500' above top of pay

1. Spud well, drill 13-1/2" hole to 900', run 10-3/4" surface casing.
2. Drill 7-7/8" hole to 4,200', checking B.O.P. daily.
3. Run tests and logs as needed.
4. Run 4-1/2" production casing to 4,200' if warranted.
5. Perforate and stimulate as needed.

In the event that circulation is lost while drilling 7-7/8" hole and intermediate casing is needed, the hole will be reamed and 1,500' of 7-7/8" intermediate casing will be set.

B.O.P. Diagram Attached - Exhibit "A"

Gas is not dedicated.

IN ABOVE SPACE DESCRIBE PROPOSED PROGRAM: If proposal is to deepen or plug back, give data on present productive zone and proposed new productive zone. If proposal is to drill or deepen directionally, give pertinent data on subsurface locations and measured and true vertical depths. Give blowout preventer program, if any.

24.

SIGNED Nancy Stolzie TITLE Land Manager DATE February 25, 1982

(This space for Federal or State office use)

PERMIT NO.

APPROVED

APPROVAL DATE

APPROVAL SUBJECT TO  
GENERAL REQUIREMENTS AND  
SPECIAL STIPULATIONS  
ATTACHED

APPROVED BY

MAR 4 1982

TITLE

DATE

CONDITIONS OF APPROVAL, IF ANY:

JAMES A. GILLHAM  
DISTRICT SUPERVISOR

See Instructions On Reverse Side

Posted ID-1  
API + NL Book  
3-12-82

NEW MEXICO OIL CONSERVATION COMMISSION  
WELL LOCATION AND ACREAGE DEDICATION PLAT

Form No. 1  
Supersedes O-114  
Effective 1-1-77

All distances must be from the outer boundaries of the Section.

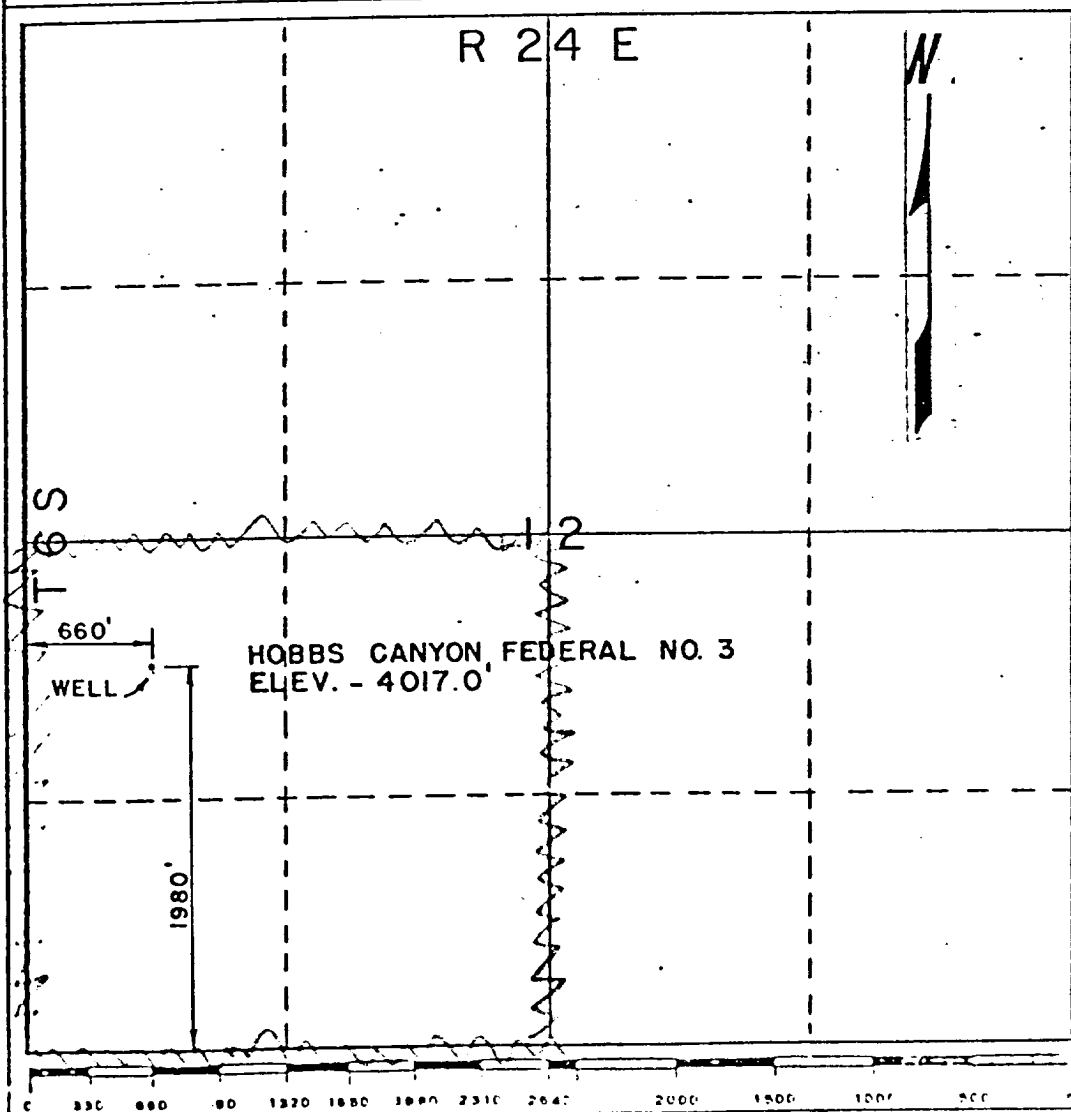
Jack Grynberg & Associates		Hobbs Canyon Federal		3
Unit Number <b>L</b>	Section <b>12</b>	Township <b>6-S</b>	Range <b>24-E</b>	County <b>Chaves</b>
Actual Footage Location of Well: <b>660</b> feet from the <b>WEST</b> line and <b>1980</b> feet from the <b>SOUTH</b> line				
Ground Level Elev. <b>4017.0'</b>	Producing Formation <b>ABO</b>	Pool <b>Undesignated ABO</b>	Dedicated Acreage: <b>160</b> Acres	

1. Outline the acreage dedicated to the subject well by colored pencil or hachure marks on the plat below.
2. If more than one lease is dedicated to the well, outline each and identify the ownership thereof (both as to working interest and royalty).
3. If more than one lease of different ownership is dedicated to the well, have the interests of all owners been consolidated by communitization, unitization, force-pooling, etc?

☐ Yes ☒ No If answer is, "yes," type of consolidation \_\_\_\_\_

If answer is "no," list the owners and tract descriptions which have actually been consolidated. (Use reverse side of this form if necessary.) \_\_\_\_\_

No allowable will be assigned to the well until all interests have been consolidated (by communitization, unitization, forced-pooling, or otherwise) or until a non-standard unit, eliminating such interests, has been approved by the Commission.



CERTIFICATION

I hereby certify that the information contained herein is true and complete to the best of my knowledge and belief.

Name

Agent

Position

Jack Grynberg &

Company

Associates

Date

I hereby certify that the well location shown on this plat was plotted from field notes of actual surveys made by me or under my supervision, and that the same is true and correct to the best of my knowledge and belief.

24 February 1982

Date Surveyed

Registered Professional Engineer

Gordon J. Douglas, P.L.S.

N.M. License No. 6054

TEN POINT COMPLIANCE PROGRAM  
Attachment to Form 9-133C, Application for Permit to Drill

Jack Grynberg and Associates  
#3 Hobbs Canyon Federal  
1980' FSL and 660' FWL  
Section 12, T 6 S - R 24 E  
Chaves County, New Mexico

1. Geologic Surface Formation  
Sandy Residuum

2. Estimated Tops of Important Geologic Marker

San Andres	550'
Glorieta	1400'
ABO	3600'
TD	4200'

3. Estimated Depths of Anticipated Water, Oil, Gas or Other Minerals

Gas	3600' - 4200'
-----	---------------

4. Proposed Casing Program

<u>Hole Size</u>	<u>Casing Size</u>	<u>Interval</u>	<u>Grade</u>	<u>Wt./Ft.</u>	<u>New or Used</u>
13-1/2"	10-3/4"	0-900	H-40	32.75	New
7-7/8"	4-1/2"	0-4200	J-55	10.75	New
9-1/4" (contingency)	7-7/8"	0-1500	K-55	26.40	New

5. Operator's Minimum Specifications for Pressure Control

Exhibit "A" is a schematic diagram of the blowout preventor equipment. The BOP's will be hydraulically tested to the full working pressure after nipping up and after any use under pressure. Pipe rams will be operationally checked each 24 hour period, as will blind rams each time pipe is pulled out of the hole.

6. Type and Characteristic of Proposed Circulating Mediums

Adequate stocks of sorptive agents will be on site to handle possible spills of fuel and oil on the surface. Heavier muds will be on location to be added if pressure requires.

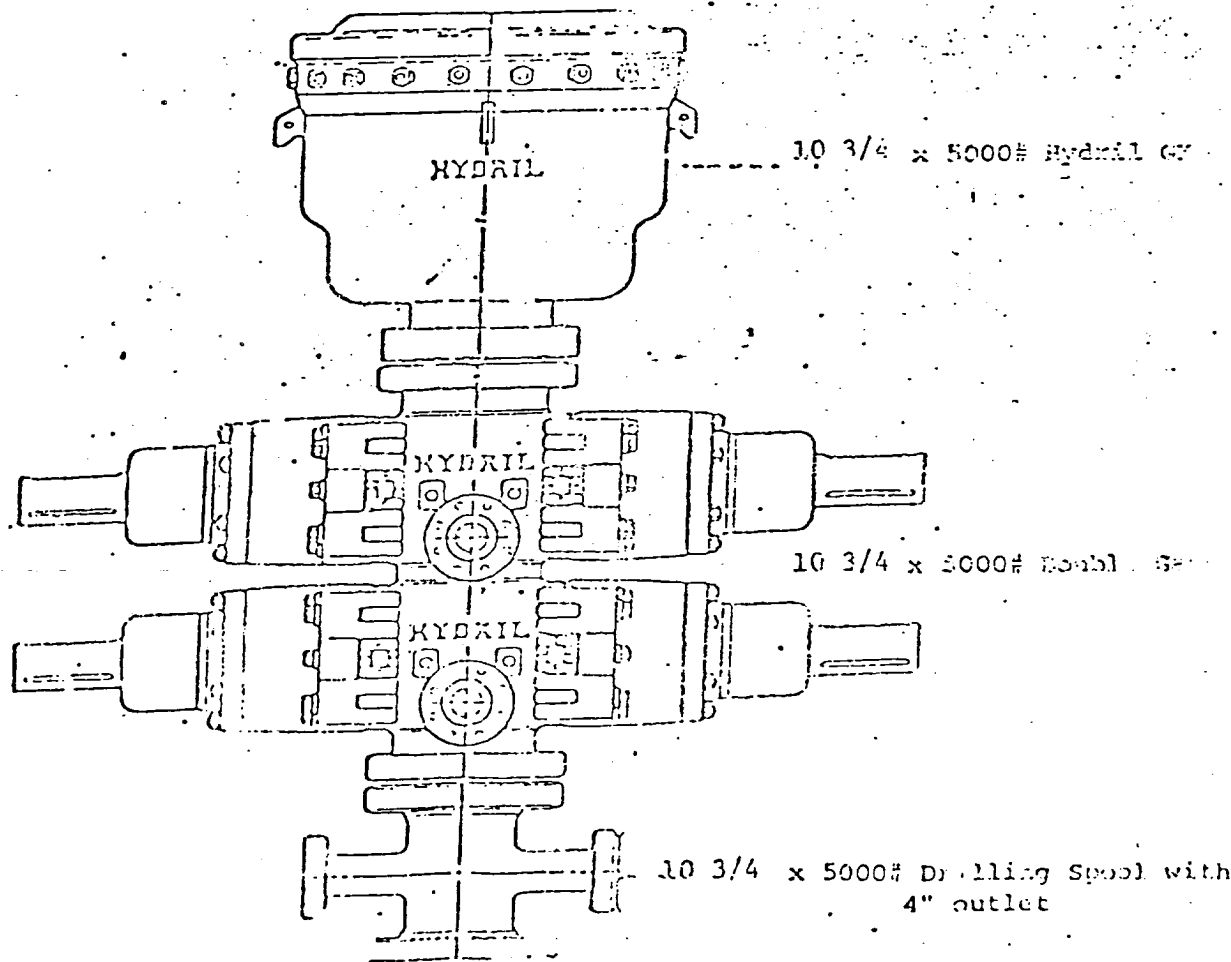
<u>Interval</u>	<u>Type</u>	<u>Weight #/Gal.</u>	<u>Visc.-Sec./Qt.</u>	<u>Fluid Loss-CC</u>
0-900	Native Mud	-	-	-
900-3200	Native Mud	-	-	-
3200-TD	Brine Base	10.2	32-40	20-30 CC Wtr.

7. Auxiliary Equipment  
Kelly cock, a float will be used at the bit, pit level indicators and flow sensor equipment, sub with full-opening valve on floor, drill pipe connection.
8. Testing, Logging and Coring Program
  - A. DST's as warranted.
  - B. The logging program will consist of a CNL-FDC and Dual Lateral Log-MSFL.
  - C. No coring is anticipated.
  - D. Stimulation procedures will be determined after evaluation of logs.  
If treatment is indicated, appropriate Sundry Notice will be submitted.
9. Anticipated Abnormal Pressures or Temperatures  
No abnormal pressures or temperatures are anticipated.
10. The well will be spudded around March 2, 1982 or as soon as permit and surface use program are approved by M.M.S. and B.L.M.

EXHIBIT "A"

Jack Grynberg and Associates  
#3 Hobbs Canyon Federal  
1980' FSL and 660' FWL  
Section 12, T 6 S - R 24 E  
Chaves County, New Mexico

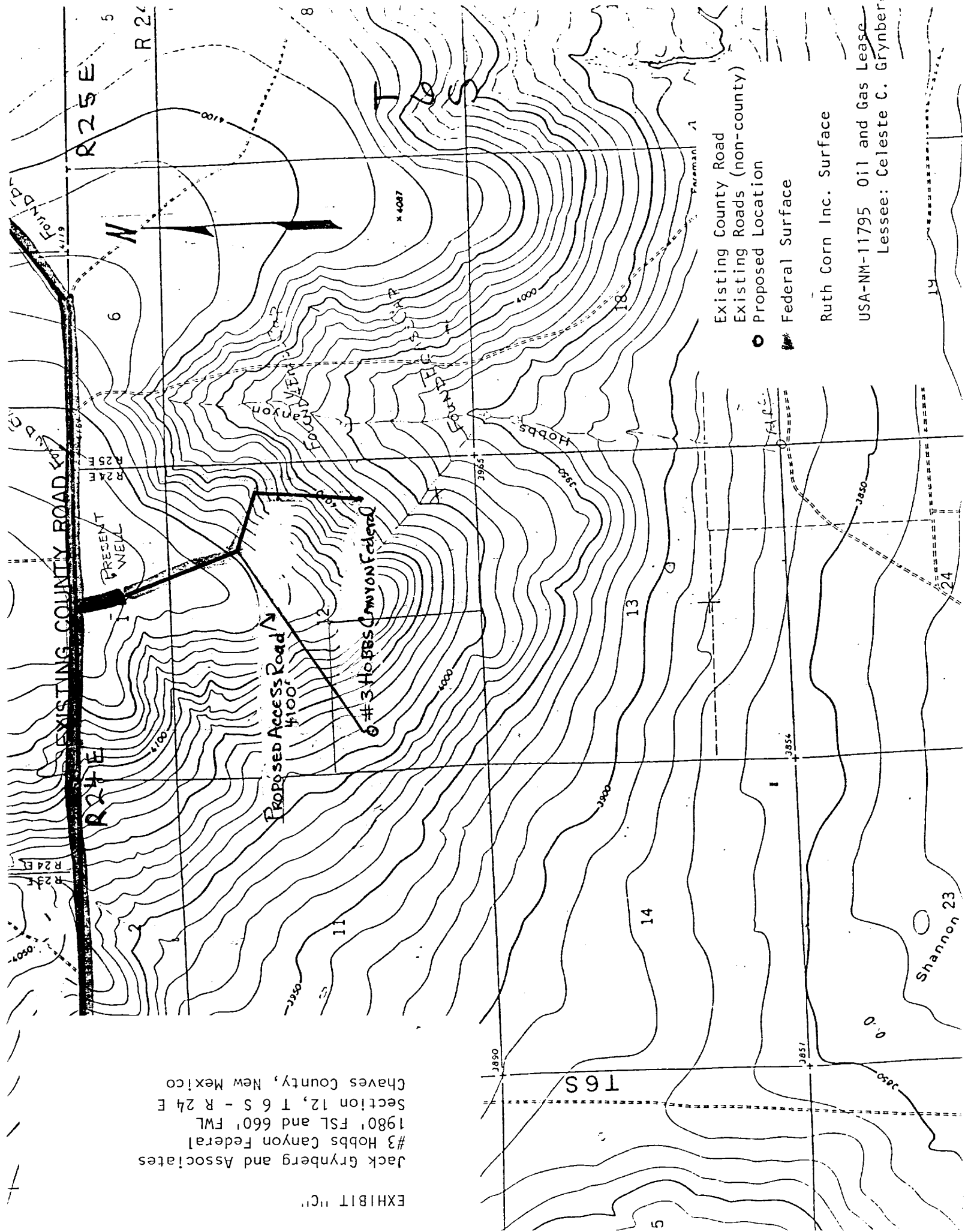
# BOP Stack



All items H<sub>2</sub>S trimmed

Jack Grynberg and Associates  
 #3 Hobbs Canyon Federal  
 1980' FSL and 660' FWL  
 Section 12, T 6 S - R 24 E  
 Chaves County, New Mexico

EXHIBIT "C"



- Existing County Road
- Existing Roads (non-county)
- Proposed Location
- Federal Surface

Ruth Corn Inc. Surface

USA-NM-11795 Oil and Gas Lease  
 Lessee: Celeste C. Grynberg

Shannon 23

Jack Grynborg and Associates  
 #3 Hobbs Canyon Federal  
 1980' FSL and 660' FWL  
 Section 12, T 6 S - R 24 E  
 Chaves County, New Mexico

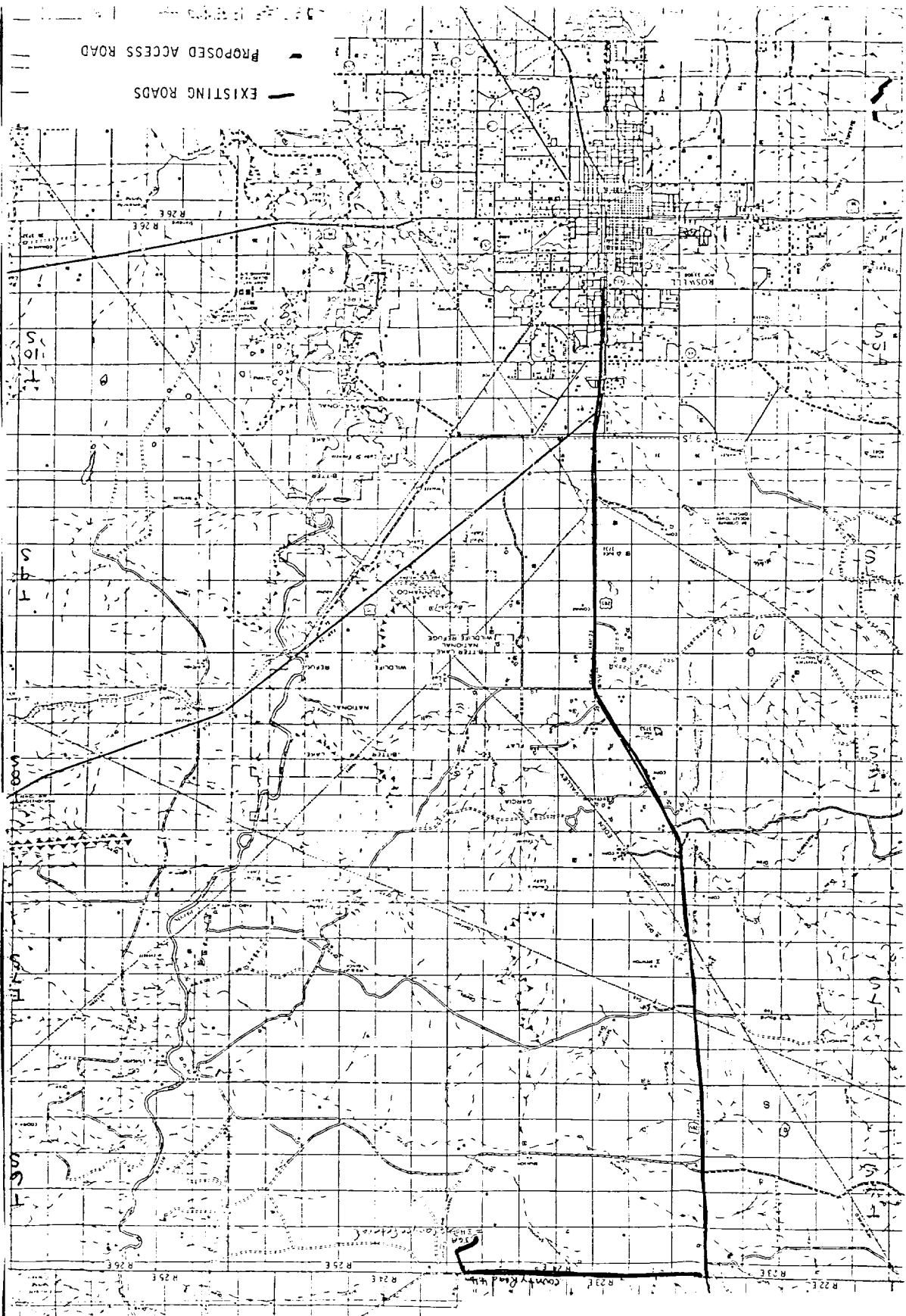


EXHIBIT "E"

Jack Grynberg and Associates  
#3 Hobbs Canyon Federal  
1980' FSL and 660' FWL  
Section 12, T 6 S - R 24 E  
Chaves County, New Mexico

