

30-005-61459 RECEIVED

5. LEASE DESIGNATION AND SERIAL NO.

NM 9539

MAR 5 1982

6. IF INDIAN, ALLOTTEE OR TRIBAL

7. UNIT AGREEMENT NAME

O. C. D.

ARTESIA, OFFICE

8. FARM OR LEASE NAME

Williamson "LC" Federal

9. WELL NO.

3

10. FIELD AND POOL, OR WILDCAT

Undes. Pecos Slope Abo

11. SEC. T., R., M., OR BLK.
AND SURVEY OR AREA

Sec. 4-T8S-R25E

12. COUNTY OR PARISH

Chaves

13. STATE

NM

1a. TYPE OF WORK

DRILL ☒DEEPEN ☐PLUG BACK ☐

b. TYPE OF WELL

OIL
WELL ☐GAS
WELL ☒

OTHER

SINGLE
ZONE ☐MULTIPLE
ZONE ☐

2. NAME OF OPERATOR

Yates Petroleum Corporation ✓

3. ADDRESS OF OPERATOR

207 S. 4th Street, Artesia, New Mexico 88210

4. LOCATION OF WELL (Report location clearly and in accordance with any State requirements.)

At surface 660' FNL and 660' FEL

At proposed prod. zone
same

14. DISTANCE IN MILES AND DIRECTION FROM NEAREST TOWN OR POST OFFICE*

approx. 20 miles NE of Roswell, NM

15. DISTANCE FROM PROPOSED*

LOCATION TO NEAREST
PROPERTY OR LEASE LINE, FT.
(Also to nearest drlg. unit line, if any)

660'

18. DISTANCE FROM PROPOSED LOCATION*
TO NEAREST WELL, DRILLING, COMPLETED,
OR APPLIED FOR, ON THIS LEASE, FT.

.5 mile

16. NO. OF ACRES IN LEASE

1479.82

19. PROPOSED DEPTH

4050'

17. NO. OF ACRES ASSIGNED
TO THIS WELL

160

20. ROTARY OR CABLE TOOLS

Rotary

21. ELEVATIONS (Show whether DF, RT, GR, etc.)

3577. GL

22. APPROX. DATE WORK WILL START*

ASAP

23.

PROPOSED CASING AND CEMENTING PROGRAM

SIZE OF HOLE	SIZE OF CASING	WEIGHT PER FOOT	SETTING DEPTH	QUANTITY OF CEMENT
14 3/4"	10 3/4"	40.5# J-55	900'	800 sx circulated
7 7/8"	4 1/2"	9.5#	TD	450 sx.

We propose to drill and test the Abo and intermediate formations. Approximately 900' of surface casing will be set and cement circulated to shut off gravel and caving. If needed (lost circulation) 8 5/8" intermediate casing will be run to 1500' and cemented with enough cement calculated to tie back into the surface casing. Temperature survey will be run to determine cement top. If commercial, production casing will be run and cemented with adequate cover, perforate, and stimulate as needed for production.

MUD PROGRAM: FW gel & LCM to 900'; KCL-starch to 3500'; Brine & KCL to TD.

BOP PROGRAM: BOP's will be installed at the offset and tested daily.

GAS NOT DEDICATED.

IN ABOVE SPACE DESCRIBE PROPOSED PROGRAM: If proposal is to deepen or plug back, give data on present productive zone and proposed new productive zone. If proposal is to drill or deepen directionally, give pertinent data on subsurface locations and measured and true vertical depths. Give blowout preventer program, if any.

24.

SIGNED

TITLE Regulatory Coordinator

DATE 3/2/82

(This space for Federal or State office use)

PERMIT NO.

APPROVED

APPROVAL DATE

APPROVED BY

TITLE

DATE

CONDITIONS OF APPROVAL, IF ANY

MAR 4 1982

JAMES A. GILLHAM
DISTRICT SUPERVISORAPPROVAL SUBJECT TO
GENERAL REQUIREMENTS AND
SPECIAL STIPULATIONS
ATTACHEDPosted ID-1
API + NL Book
3-12-82

NEW MEXICO OIL CONSERVATION COMMISSION
WELL LOCATION AND ACREAGE DEDICATION PLAT

Form C-102
Supersedes C-128
Effective 1-1-65

All distances must be from the outer boundaries of the Section.

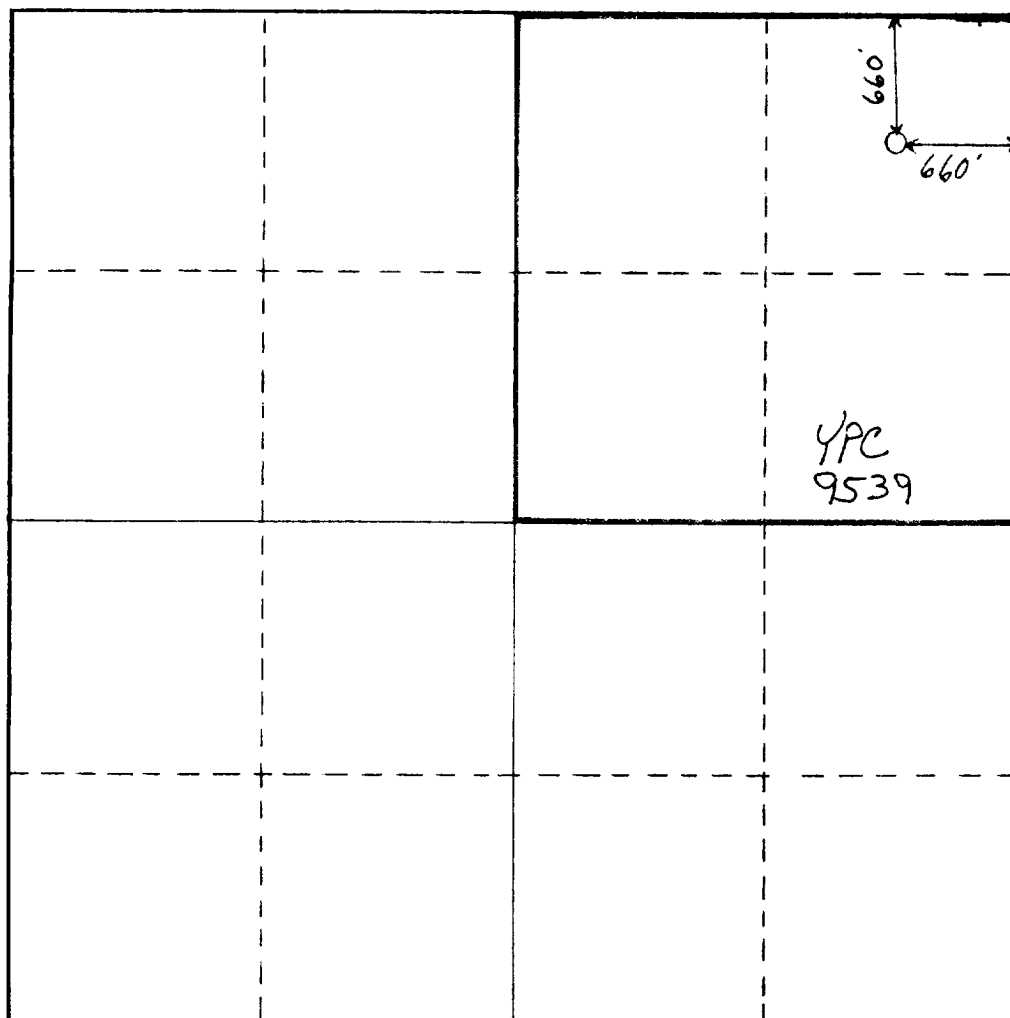
Operator YATES PETROLEUM CORPORATION			Lease Williamson "LC" Federal		Well No. 3
Unit Letter A	Section 4	Township 8S	Range 25E	County Chaves	
Actual Footage Location of Well: 660 feet from the North line and 660 feet from the East line					
Ground Level Elev. 3577.0 GL	Producing Formation Abo		Pool Undes. Pecos Slope Abo		Dedicated Acreage: 160 Acres

1. Outline the acreage dedicated to the subject well by colored pencil or hachure marks on the plat below.
2. If more than one lease is dedicated to the well, outline each and identify the ownership thereof (both as to working interest and royalty).
3. If more than one lease of different ownership is dedicated to the well, have the interests of all owners been consolidated by communitization, unitization, force-pooling, etc?

☐ Yes ☐ No If answer is "yes," type of consolidation _____

If answer is "no," list the owners and tract descriptions which have actually been consolidated. (Use reverse side of this form if necessary.) _____

No allowable will be assigned to the well until all interests have been consolidated (by communitization, unitization, forced-pooling, or otherwise) or until a non-standard unit, eliminating such interests, has been approved by the Commission.

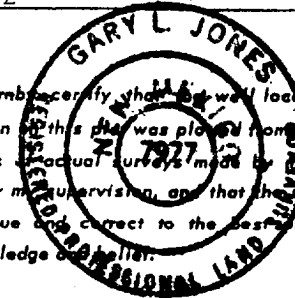


CERTIFICATION

I hereby certify that the information contained herein is true and complete to the best of my knowledge and belief.

Name
Cy Cowan
Position
Regulatory Coordinator
Company
Yates Petroleum Corporation
Date
3/2/82

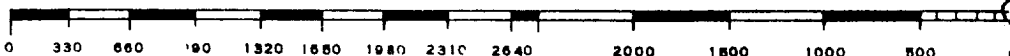
I hereby certify that the well location shown on this plat was placed from field notes of actual surveys made by me or under my supervision, and that the same is true and correct to the best of my knowledge and belief.



Date Surveyed
February 25, 1982
Registered Professional Engineer
and/or Land Surveyor

Gary L. Jones
Certificate No.

7977



YATES PETROLEUM CORPORATION
Williamson "LC" Federal #3
660' FNL and 660' FEL
Section 4-T8S-R25E

In conjunction with Form 9-331C, Application for Permit to Drill subject well, Yates Petroleum Corporation submits the following ten items of pertinent information in accordance with USGS requirements.

1. The geologic surface formation is sandy alluvium.
2. The estimated tops of geologic markers are as follows:

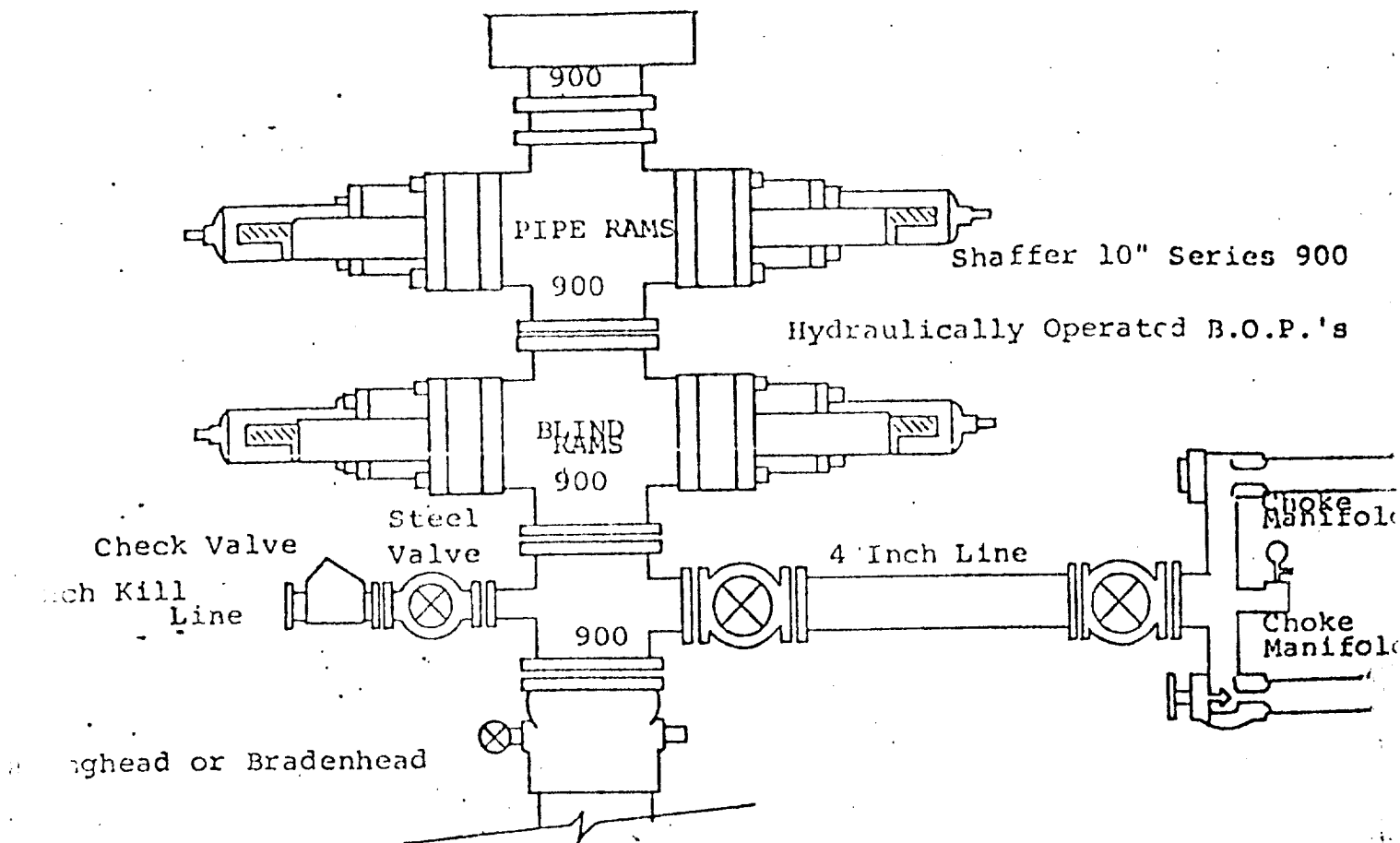
<u>San Andres</u>	<u>369'</u>
<u>Glorieta</u>	<u>1336'</u>
<u>Fullerton</u>	<u>2774'</u>
<u>Abo</u>	<u>3467'</u>
<u>TD</u>	<u>4050'</u>
3. The estimated depths at which anticipated water, oil or gas formations are expected to be encountered:

Water: 240' - 280'

Oil or Gas: 3480'
4. Proposed Casing Program: See Form 9-331C.
5. Pressure Control Equipment: See Form 9-331C and Exhibit B.
6. Mud Program: See Form 9-331C.
7. Auxiliary Equipment: Kelly Cock; pit level indicators and flow sensor equipment; sub with full-opening valve on floor, drill pipe connection.
8. Testing, Logging and Coring Program:

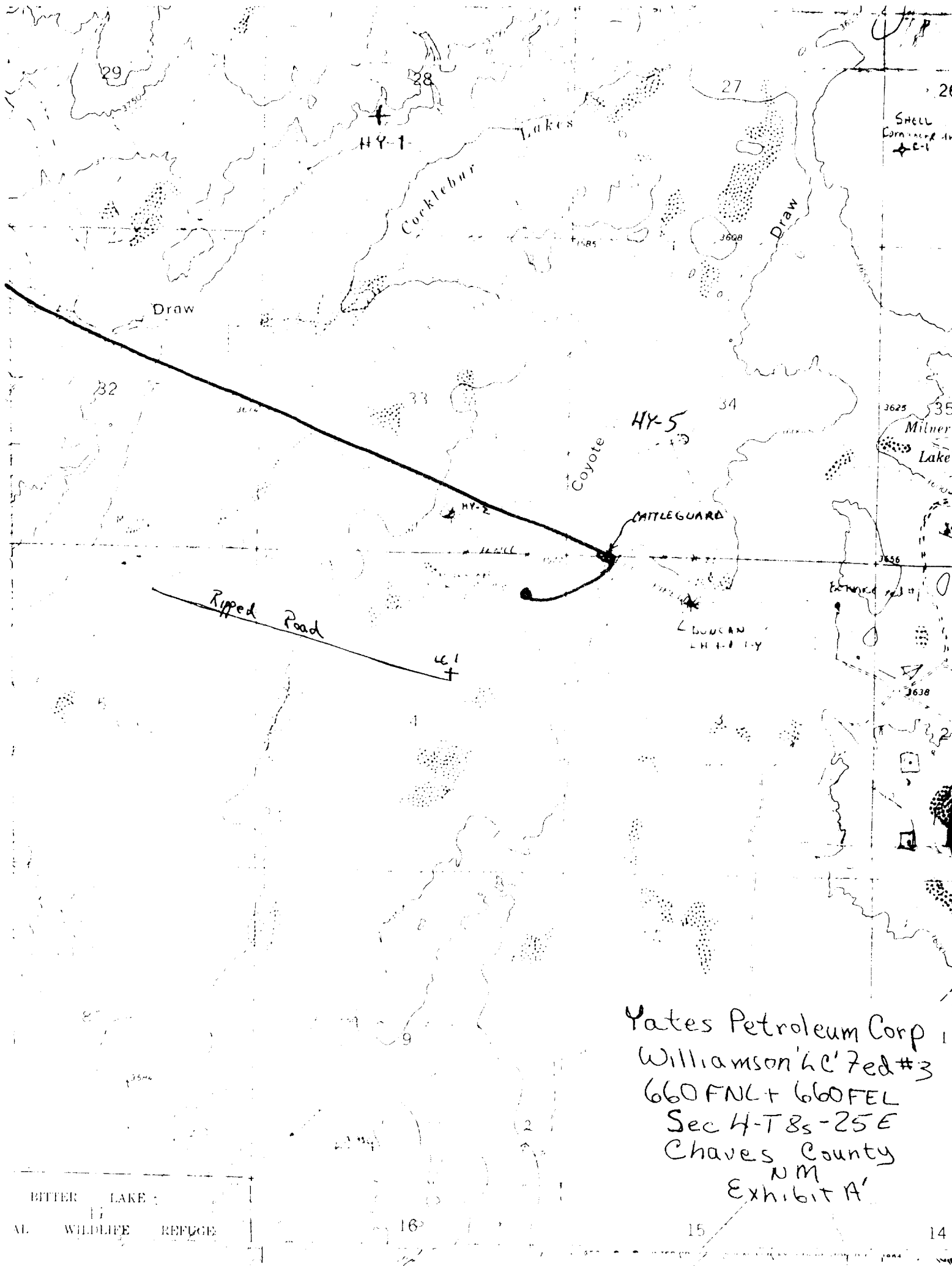
Samples:	<u>Surface casing to TD.</u>
DST's:	<u>As warranted.</u>
Coring:	<u>None anticipated</u>
Logging:	<u>CNL-FDC TD to casing w/GR-CNL to surface, DLL from TD to casing w/RxO</u>
9. No abnormal pressures or temperatures are anticipated.
10. Anticipated starting date: As soon as possible after approval.

Exhibit B



FOLLOWING CONSTITUTE MINIMUM BLOWOUT PREVENTER REQUIREMENTS

1. All preventers to be hydraulically operated with secondary manual control installed prior to drilling out from under casing.
2. Choke outlet to be a minimum of 4" diameter.
3. Kill line to be of all steel construction of 2" minimum diameter.
4. All connections from operating manifolds to preventers to be all steel, hole or tube a minimum of one inch in diameter.
5. The available closing pressure shall be at least 15% in excess of that required with sufficient volume to operate the B.O.P.'s.
6. All connections to and from preventer to have a pressure rating equivalent to that of the B.O.P.'s.
7. Inside blowout preventer to be available on rig floor.
8. Operating controls located a safe distance from the rig floor.
9. Hole must be kept filled on trips below intermediate casing. Operator not responsible for blowouts resulting from not keeping hole full.
10. D. P. float must be installed and used below zone of first gas intrusion.



SHELL
CORPORATION
LC-1

Yates Petroleum Corp
Williamson LC Fed #3
660 FNL + 660 FEL
Sec 4-T8s-25E
Chaves County
NM
Exhibit A

BITTER LAKE
WILDLIFE REFUGE

DEPARTMENT OF THE INTERIOR
GEOLOGICAL SURVEY

SUNDRY NOTICES AND REPORTS ON WELLS

(Do not use this form for proposals to drill or to deepen or plug back to a different reservoir. Use Form 9-331-C for such proposals.)

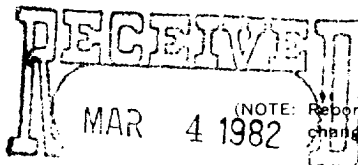
1. oil ☐ well ☐ gas ☒ well ☐ other
2. NAME OF OPERATOR
Yates Petroleum Corporation
3. ADDRESS OF OPERATOR
207 S. 4th, Artesia, New Mexico 88210
4. LOCATION OF WELL (REPORT LOCATION CLEARLY. See space 17 below.)
AT SURFACE: 660' FNL and 660' FEL
AT TOP PROD. INTERVAL:
AT TOTAL DEPTH: same
16. CHECK APPROPRIATE BOX TO INDICATE NATURE OF NOTICE, REPORT, OR OTHER DATA

REQUEST FOR APPROVAL TO:

- TEST WATER SHUT-OFF ☐
FRACTURE TREAT ☐
SHOOT OR ACIDIZE ☐
REPAIR WELL ☐
PULL OR ALTER CASING ☐
MULTIPLE COMPLETE ☐
CHANGE ZONES ☐
ABANDON* ☐

SUBSEQUENT REPORT OF:

(other) amendment to surface use plan



(NOTE: Report results of multiple completion or zone change on Form 9-330.)

OIL & GAS
U.S. GEOLOGICAL SURVEY
ROSWELL, NEW MEXICO

17. DESCRIBE PROPOSED OR COMPLETED OPERATIONS (Clearly state all pertinent details, and give pertinent dates, including estimated date of starting any proposed work. If well is directionally drilled, give subsurface locations and measured and true vertical depths for all markers and zones pertinent to this work.)*

Per BLM and MMS request, access road has been rerouted off of the pipeline road, due south, into the northwest corner of the pad.

REFER TO ATTACHED MAP.

Subsurface Safety Valve: Manu. and Type _____ Set @ _____ Ft.

18. I hereby certify that the foregoing is true and correct

SIGNED Robert L. Willhousen TITLE Regulatory Secy DATE 3/3/82

(This space for Federal or State office use)

APPROVED BY
CONDITIONS OF APPROVAL, IF ANY:

APPROVED

TITLE _____

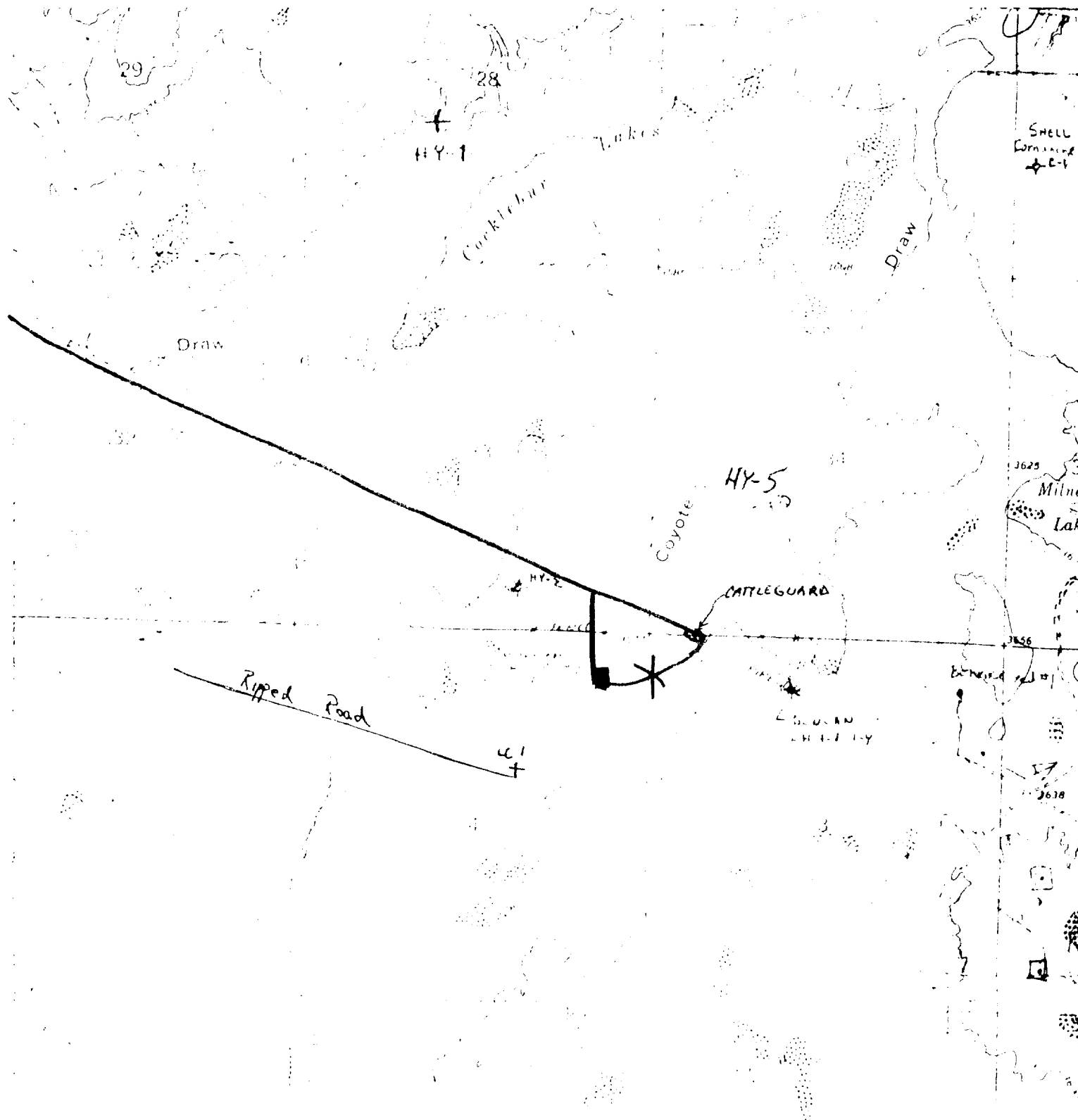
DATE _____

MAR 4 1982

JAMES A. GILLHAM
DISTRICT SUPERVISOR

*See Instructions on Reverse Side

5. LEASE NM 9539	RECEIVED
6. IF INDIAN, ALLOTTEE OR TRIBE NAME	MAR - 5 1982
7. UNIT AGREEMENT NAME	O. C. D.
8. FARM OR LEASE NAME Williamson "LC" Federal	ARTESIA, OFFICE
9. WELL NO. 3	
10. FIELD OR WILDCAT NAME Undes. Pecos Slope Abo	
11. SEC., T., R., M., OR BLK. AND SURVEY OR AREA Sec. 4-T8S-R25E	
12. COUNTY OR PARISH Chaves	13. STATE New Mexico
14. API NO.	
15. ELEVATIONS (SHOW DF, KDB, AND WD) 3577. GL	



Yates Petroleum Corp
 Williamson LC' 7ed #3
 660 FNL + 660 FEL
 Sec 4-T8s-25E
 Chaves County
 NM
 Exhibit A'