

NO. OF COPIES RECEIVED	
DISTRIBUTION	
SANTA FE	1
FILL	1
U.S.G.S.	2
LAND OFFICE	1
OPERATOR	1

MAR 21 1982

O. C. D.  
ARTESIA, OFFICE

5A. Indicate Type of Lease
STATE <input checked="" type="checkbox"/> FEE <input type="checkbox"/>
5. State Oil & Gas Lease No.
LG-0336
7. Unit Agreement Name
8. Farm or Lease Name
Redman "OY" State
9. Well No.
6
10. Field and Pool, or Wildcat
Undes. Pecos Slope Abo
12. County
Chaves

## APPLICATION FOR PERMIT TO DRILL, DEEPEN, OR PLUG BACK

a. Type of Work	DRILL <input checked="" type="checkbox"/> DEEPEN <input type="checkbox"/> PLUG BACK <input type="checkbox"/>
b. Type of Well	OIL WELL <input type="checkbox"/> GAS WELL <input checked="" type="checkbox"/> OTHER <input type="checkbox"/> SINGLE ZONE <input type="checkbox"/> MULTIPLE ZONE <input type="checkbox"/>
c. Name of Operator	Yates Petroleum Corporation
d. Address of Operator	207 S. 4th, Artesia, New Mexico 88210
e. Location of Well	UNIT LETTER K LOCATED 1980 FEET FROM THE South LINE
f. Section	NO. 1980 FEET FROM THE West LINE OF SEC. 26 TWP. 4S RGE. 24E NMEM
19. Proposed Depth	4025'
16A. Formation	Abo
20. Rotary or C.T.	Rotary
1. Elevations (Show whether DE, RT, etc.)	4031
21A. Kind & Status Plug. Bond	Blanket
21B. Drilling Contractor	LaRue Drilling
22. Approx. Date Work will start	ASAP

## 3. PROPOSED CASING AND CEMENT PROGRAM

SIZE OF HOLE	SIZE OF CASING	WEIGHT PER FOOT	SETTING DEPTH	SACKS OF CEMENT	EST. TOP
14 3/4"	10 3/4"	40.5# J-55	900'	550 sx	circulated
7 7/8"	4 1/2"	9.5#	TD	400 sx	

We propose to drill and test the Abo and intermediate formations. Approximately 900' of surface casing will be set and cement circulated to shut off gravel and caving. If needed (lost circulation) 8 5/8" intermediate casing will be run to 1500' and cemented with enough cement calculated to tie back into the surface casing. If commercial, production casing will be run and cemented with adequate cover, perforate, and stimulate as needed for production.

MUD PROGRAM: FW gel and LCM to 1500'; Brine to 3200'; Salt gel/starch to TD.

BOP PROGRAM: BOP's will be installed at the offset and tested daily.

GAS NOT DEDICATED.

APPROVAL VALID FOR 180 DAYS  
PERMIT EXPIRES 9-25-82  
UNLESS DRILLING UNDERWAY

ABOVE SPACE DESCRIBE PROPOSED PROGRAM; IF PROPOSAL IS TO DEEPEN OR PLUG BACK, GIVE DATA ON PRESENT PRODUCTIVE ZONE AND PROPOSED NEW PRODUCTION ZONE. GIVE BLOWOUT PREVENTER PROGRAM, IF ANY.

I hereby certify that the information above is true and complete to the best of my knowledge and belief.

Signed Shirley Roden Title Regulatory Manager Date 3/22/82

(This space for State Use)

APPROVED BY Timothy Walker TITLE OIL AND GAS INSPECTOR DATE 3-25-82

CONDITIONS OF APPROVAL, IF ANY:

Posted ID-1  
API + NL Book  
3-26-82

NEW MEXICO OIL CONSERVATION COMMISSION  
WELL LOCATION AND ACREAGE DEDICATION PLAT

Form C-102  
Supersedes C-128  
Effective 1-1-65

All distances must be from the outer boundaries of the Section.

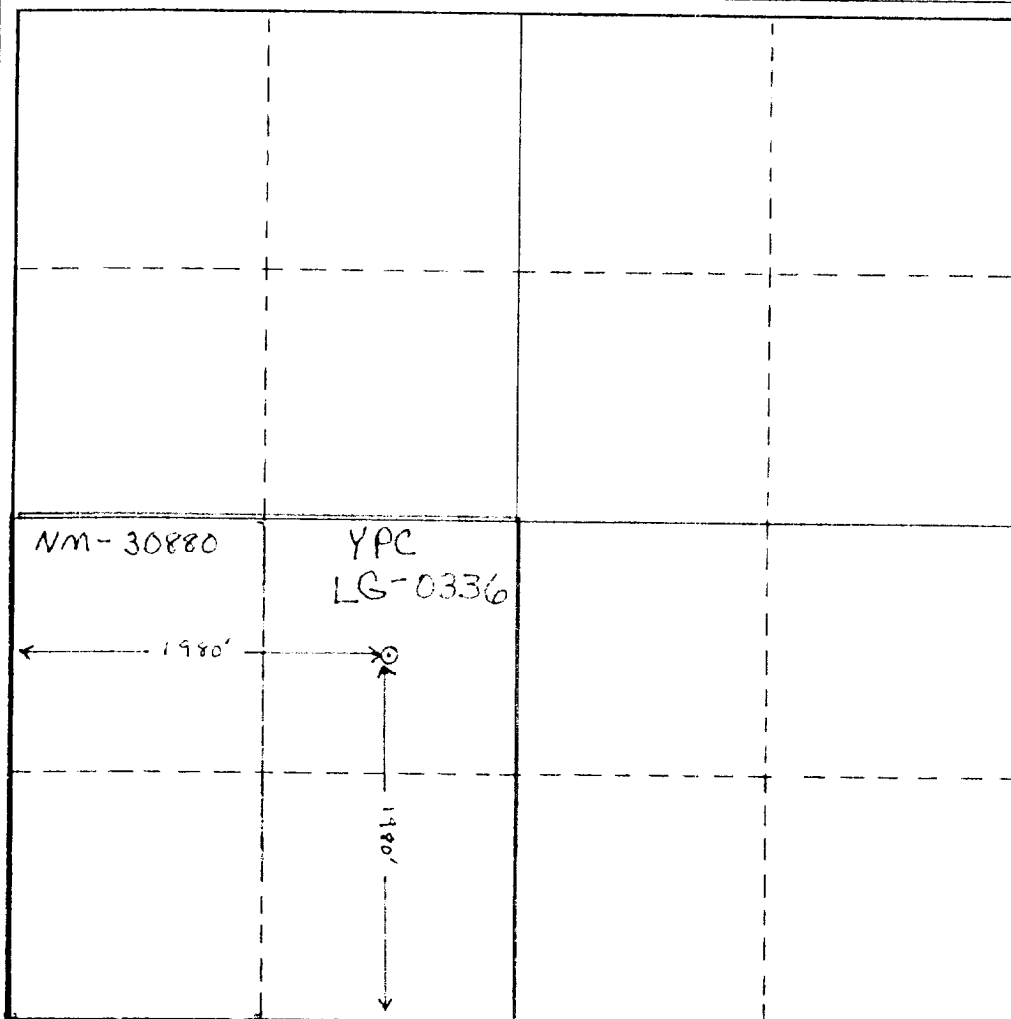
Operator YATES PETROLEUM CORPORATION			Lease Redman "OY" State		Well No. 6
Unit Letter K	Section 26	Township 4 South	Range 24 East	County Chaves	
Actual Footage Location of Well: 1980 feet from the South line and 1980 feet from the West line					
Ground Level Elev. 4031.0	Producing Formation Abo		Pool Undes. Pecos Slope Abo		Dedicated Acreage; 160 Acres

1. Outline the acreage dedicated to the subject well by colored pencil or hachure marks on the plat below.
2. If more than one lease is dedicated to the well, outline each and identify the ownership thereof (both as to working interest and royalty).
3. If more than one lease of different ownership is dedicated to the well, have the interests of all owners been consolidated by communitization, unitization, force-pooling, etc?

☐ Yes ☒ No If answer is "yes," type of consolidation will be communitized if productive

If answer is "no," list the owners and tract descriptions which have actually been consolidated. (Use reverse side of this form if necessary.)

No allowable will be assigned to the well until all interests have been consolidated (by communitization, unitization, forced-pooling, or otherwise) or until a non-standard unit, eliminating such interests, has been approved by the Commission.



CERTIFICATION

I hereby certify that the information contained herein is true and complete to the best of my knowledge and belief.

*Gliserio Rodriguez*

Name

Gliserio Rodriguez

Position

Regulatory Manager

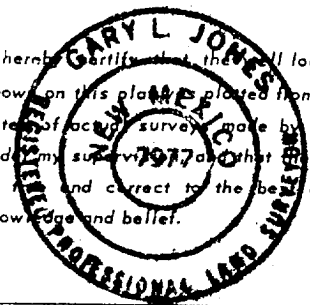
Company

Yates Petroleum Corporation

Date

3/22/82

I hereby certify that the well location shown on this plat is plotted from field notes of actual survey made by me or under my supervision and that the same is true and correct to the best of my knowledge and belief.



Date Surveyed

March 19, 1982

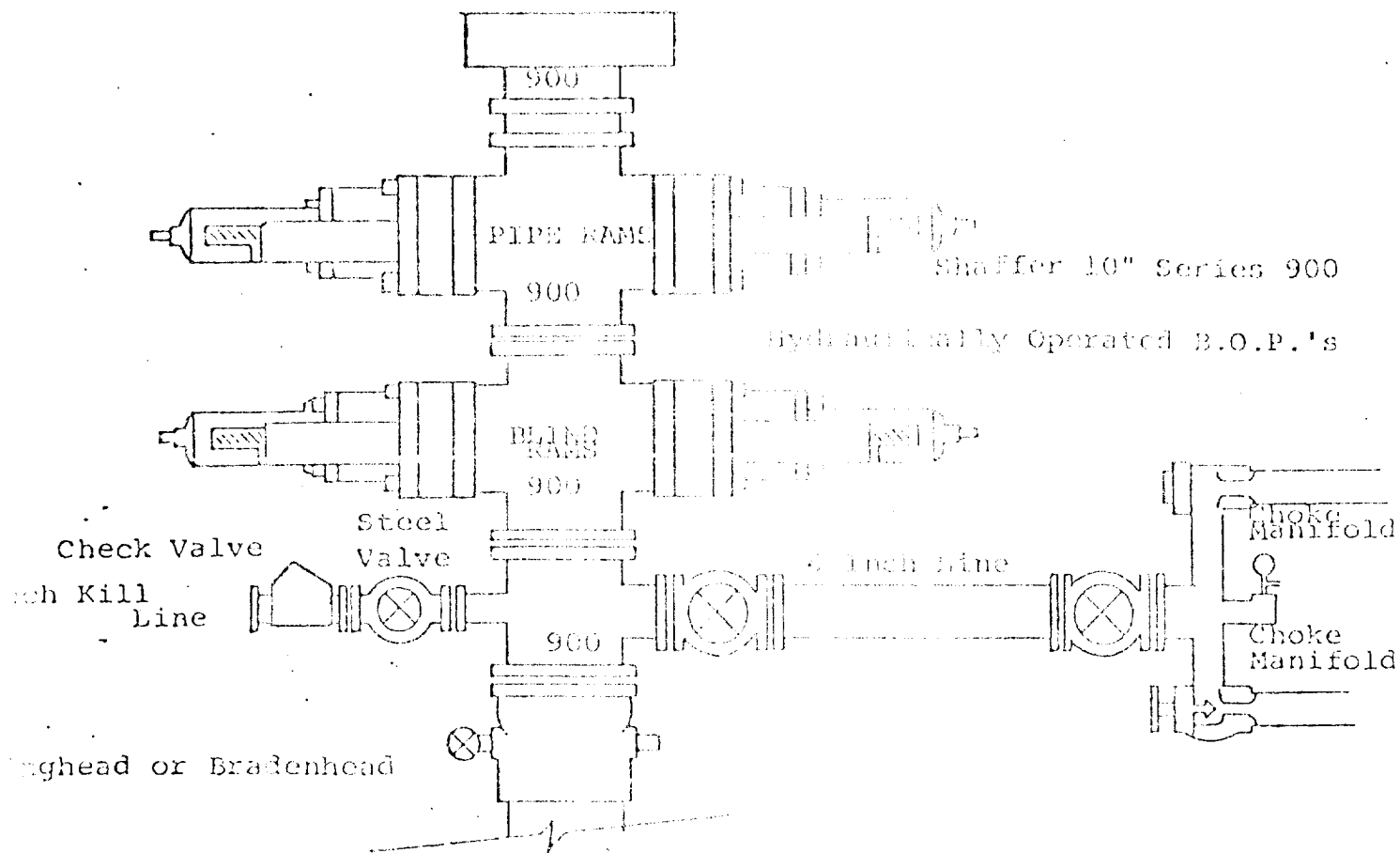
Registered Professional Engineer and/or Land Surveyor

*Gary L. Jones*

Certificate No.

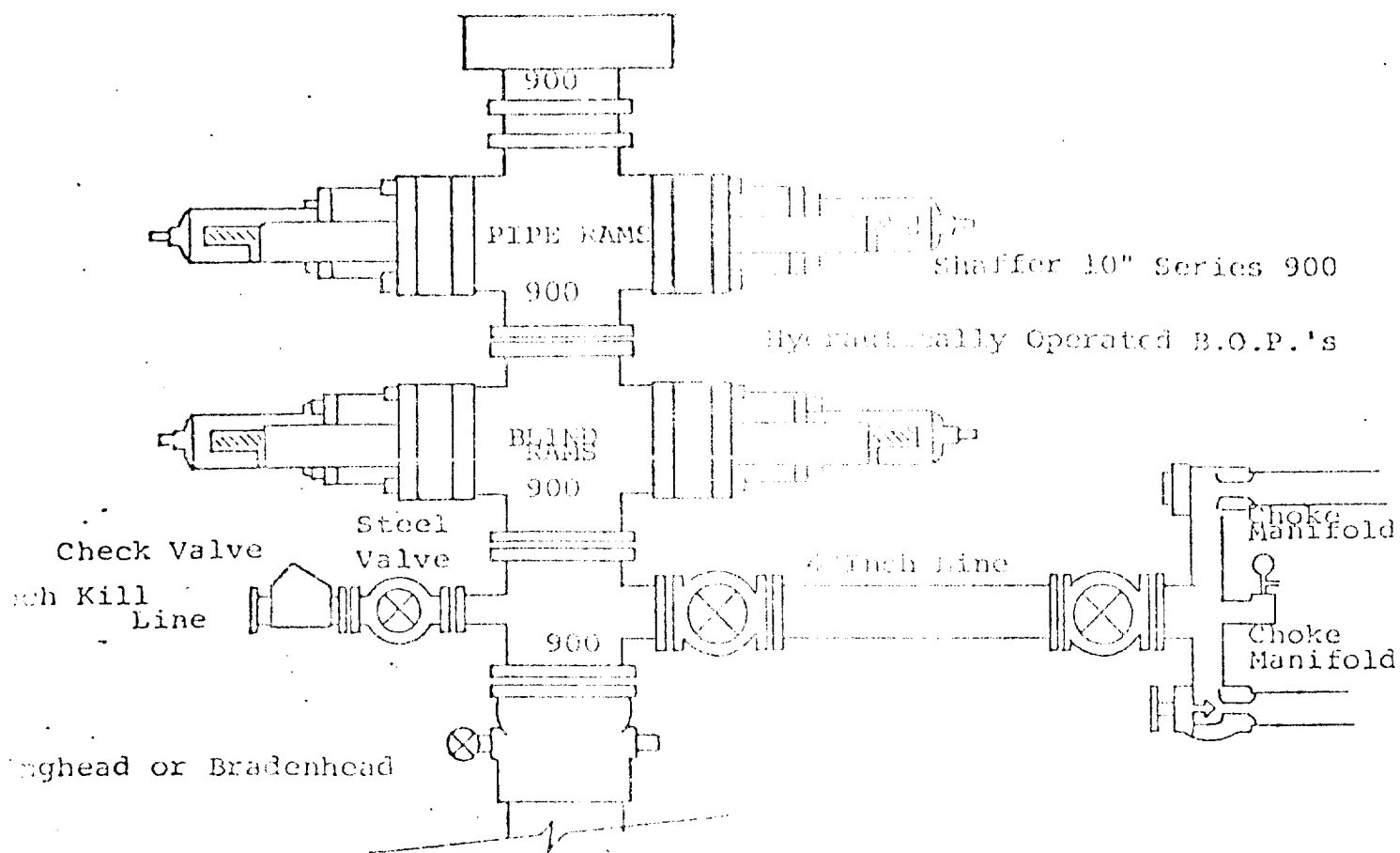
7977

0 330 660 990 1320 1650 1980 2310 2640 2000 1500 1000 500 0



#### FOLLOWING CONSTITUTE MINIMUM BLOWOUT PREVENTER REQUIREMENTS

- All preventers to be hydraulically operated with secondary manual controls installed prior to drilling out from under casing.
- Choke outlet to be a minimum of 4" diameter.
- Kill line to be of all steel construction of 2" minimum diameter.
- All connections from operating manifolds to preventers to be all steel, hole or tube a minimum of one inch in diameter.
- The available closing pressure shall be at least 15% in excess of that required with sufficient volume to operate the B.O.P.'s.
- All connections to and from preventer to have a pressure rating equivalent to that of the B.O.P.'s.
- Inside blowout preventer to be available on the floor.
- Operating controls located a safe distance from the rig floor.
- Hole must be kept filled on trips before intermediate casing. Operator not responsible for blowouts resulting from not keeping hole full.
- B. P. float must be installed and used before zone of first gas intrusion.



FOLLOWING CONSTITUTE MINIMUM BLOWOUT PREVENTER REQUIREMENTS

All preventers to be hydraulically operated with secondary manual controls installed prior to drilling out from under casing.

Choke outlet to be a minimum of 4" diameter.

Kill line to be of all steel construction of 2" minimum diameter.

All connections from operating manifolds to preventers to be all steel.

hole or tube a minimum of one inch in diameter.

The available closing pressure shall be at least 15% in excess of that required with sufficient volume to operate the P.O.P.'s.

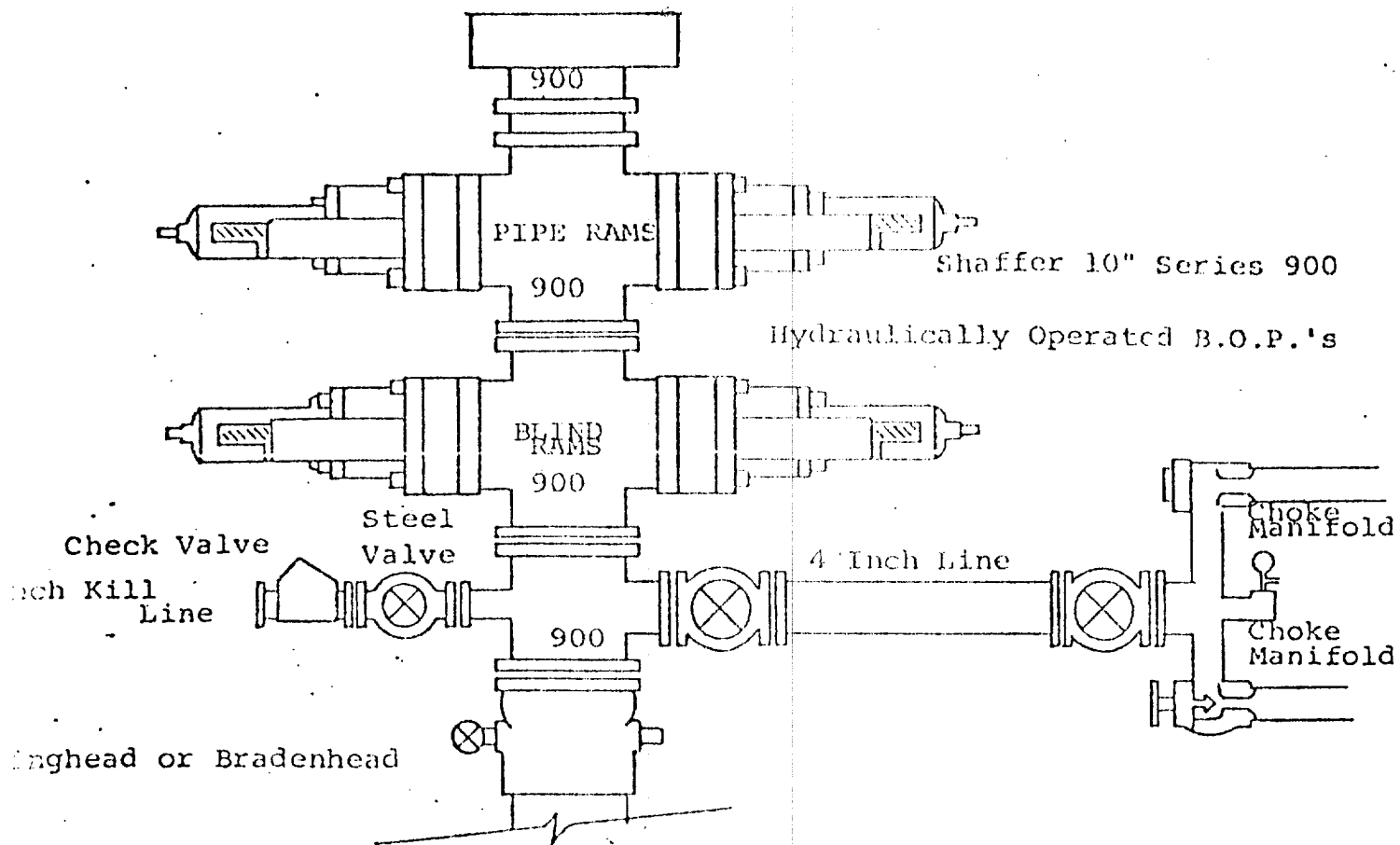
All connections to and from preventer to have a pressure rating equivalent to that of the B.O.P.'s.

Inside blowout preventer to be available on rig floor.

Operating controls located a safe distance from the rig floor.

Hole must be kept filled on trips below intermediate casing. Operator not responsible for blowouts resulting from not keeping hole full.

D. P. float must be installed and used below zone of first gas intrusion.



#### FOLLOWING CONSTITUTE MINIMUM BLOWOUT PREVENTER REQUIREMENTS

- All preventers to be hydraulically operated with secondary manual controls installed prior to drilling out from under casing.
- Choke outlet to be a minimum of 4" diameter.
- Kill line to be of all steel construction of 2" minimum diameter.
- All connections from operating manifolds to preventers to be all steel, hole or tube a minimum of one inch in diameter.
- The available closing pressure shall be at least 15% in excess of that required with sufficient volume to operate the B.O.P.'s.
- All connections to and from preventer to have a pressure rating equivalent to that of the B.O.P.'s.
- Inside blowout preventer to be available on rig floor.
- Operating controls located a safe distance from the rig floor.
- Hole must be kept filled on trips below intermediate casing. Operator not responsible for blowouts resulting from not keeping hole full.
- D. P. float must be installed and used below zone of first gas intrusion.