

UNITED STATES
DEPARTMENT OF THE INTERIOR

GEOLOGICAL SURVEY

5. LEASE DESIGNATION AND SERIAL NO.

NM 14983 APR 2 1982

6. IF INDIAN, ALLOTTEE OR TRIBE NAME

C. C. D.
ARTESIA, OFFICE

7. UNIT AGREEMENT NAME

8. FARM OR LEASE NAME

Monaghan "JY" Federal

9. WELL NO.

4

10. FIELD AND POOL, OR WILDCAT

Undesignated Pecos Slope ABO

11. SEC., T., R., M., OR BLK.
AND SURVEY OR AREA

Sec. 21, T5S R24E

12. COUNTY OR PARISH 13. STATE

Chaves

NM

1a. TYPE OF WORK

DRILL ☒DEEPEN ☐PLUG BACK ☐

b. TYPE OF WELL

OIL
WELL ☐GAS
WELL ☒

OTHER

SINGLE
ZONE ☐MULTIPLE
ZONE ☐

2. NAME OF OPERATOR

YATES PETROLEUM CORPORATION

3. ADDRESS OF OPERATOR

207 South 4th Street, Artesian New Mexico 88210

4. LOCATION OF WELL (Report location clearly and in accordance with any State requirements*)

At surface
660 FNL 1980 FWL

At proposed prod. zone

14. DISTANCE IN MILES AND DIRECTION FROM NEAREST TOWN OR POST OFFICE*

32 Miles NNE Roswell, NM

15. DISTANCE FROM PROPOSED*

LOCATION TO NEAREST
PROPERTY OR LEASE LINE, FT.
(Also to nearest drilg. unit line, if any)

660

16. NO. OF ACRES IN LEASE

17. NO. OF ACRES ASSIGNED
TO THIS WELL

160 Acres

18. DISTANCE FROM PROPOSED LOCATION*
TO NEAREST WELL, DRILLING, COMPLETED,
OR APPLIED FOR, ON THIS LEASE, FT.

19. PROPOSED DEPTH

4225

20. ROTARY OR CABLE TOOLS

Rotary

21. ELEVATIONS (Show whether DF, RT, GR, etc.)

4004.4

22. APPROX. DATE WORK WILL START*

ASAP

23.

PROPOSED CASING AND CEMENTING PROGRAM

SIZE OF HOLE	SIZE OF CASING	WEIGHT PER FOOT	SETTING DEPTH	QUANTITY OF CEMENT
15"	10 3/4"	40.5# J-55	Approx. 920	750 Sx Circulated
7 7/8"	4 1/2" or 5 1/2"	10.5 or 15.5#	TD 4225	350 Sx

We propose drill and test the ABO and intermediate formations. Approximately 920' of surface casing will be set and cement circulated to shut off gravel and caving. If needed (lost circulation) 8 5/8 intermediate casing will be run to 1500' and cemented with enough cement calculated to tie back into the surface casing. Temperature survey will be run to determine cement top. If commercial, production casing will be run and cemented with adequate cover, perforate, and stimulate as needed for production.

MUD PROGRAM: FW gel and LCM to 1500' - Brine to 3200' - Drispak and Starch to TD.
MW 9.6 - 10, Vis. 29 - 34, WL 14 - 7.

BOP PROGRAM: BOP'S will be installed in 10 3/4" casing and tested daily.

GAS NOT DEDICATED:

IN ABOVE SPACE DESCRIBE PROPOSED PROGRAM: If proposal is to deepen or plug back, give data on present productive zone and proposed new productive zone. If proposal is to drill or deepen directionally, give pertinent data on subsurface locations and measured and true vertical depths. Give blowout preventer program, if any.

24.

SIGNED

TITLE

DATE March 15, 1982

(This space for Federal or State office use)

PERMIT NO.

APPROVAL DATE

APPROVED BY

DATE

CONDITIONS OF APPROVAL, IF ANY:

APPROVED

1978 Ssd.) GEORGE H. STEWART

APR 1 1982

FOR

JAMES A. GILLHAM
DISTRICT SUPERVISORPosted ID-1
API + NL Book
4-9-82

NEW MEXICO OIL CONSERVATION COMMISSION
WELL LOCATION AND ACREAGE DEDICATION PLAT

Form C-102
Supersedes C-120
Effective 1-1-65

All distances must be from the outer boundaries of the Section

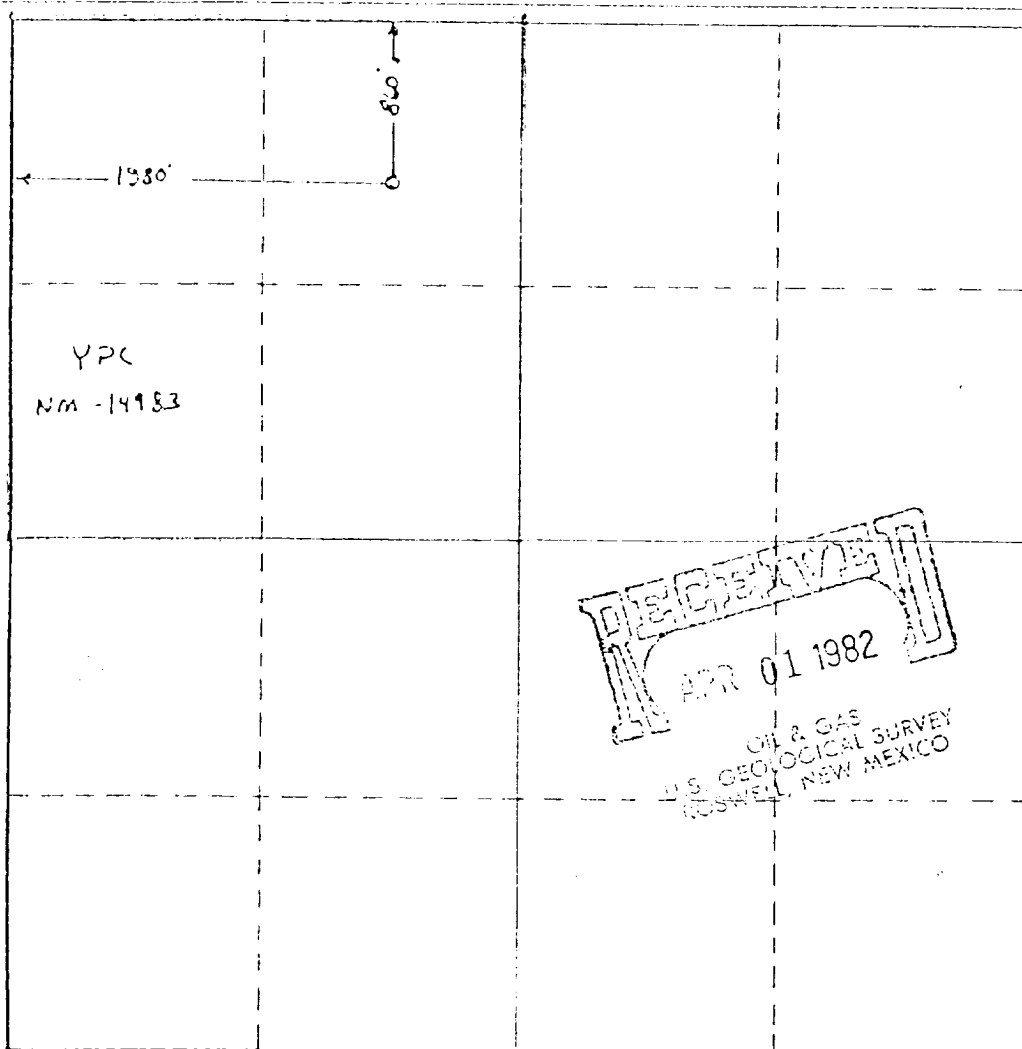
Operator YATES PETROLEUM CORPORATION			Lease Monaghan "QT" Federal		Well No. 4
Tract Letter C	Section 21	T. & R. 5 South	Range 24 East	County Chaves	
Actual Well Location of Well:					
860	Feet from the	North	Line and	1980	Feet from the East West Line
Ground Level Elev. 4001.4	Elevating Formation Abo		Post Pecos Slope Abo	Dedicated Acreage: 160 Acres	

1. Outline the acreage dedicated to the subject well by colored pencil or hatchure marks on the plat below.
2. If more than one lease is dedicated to the well, outline each and identify the ownership thereof (both as to working interest and royalty).
3. If more than one lease of different ownership is dedicated to the well, have the interests of all owners been consolidated by communitization, unitization, force-pooling, etc?

☐ Yes ☐ No If answer is "yes" type of consolidation _____

If answer is "no," list the owners and tract descriptions which have actually been consolidated. (Use reverse side of this form if necessary.) _____

No allowable will be assigned to the well until all interests have been consolidated (by communitization, unitization, forced-pooling, or otherwise) or until a non-standard unit, eliminating such interests, has been approved by the Commission.



CERTIFICATION

I hereby certify that the information contained herein is true and complete to the best of my knowledge and belief.

Ken Beardemph
Name

Ken Beardemph

Position

Regulatory Coordinator

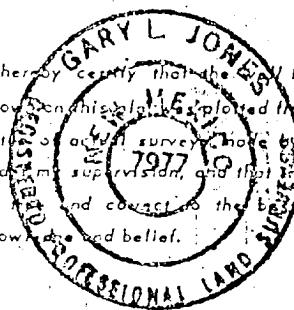
Company

Yates Petroleum Corporation

Date

3/25/82

I hereby certify that the location shown on this plat was plotted from field notes of actual survey made by me or under my supervision, and that the same is true and correct to the best of my knowledge and belief.



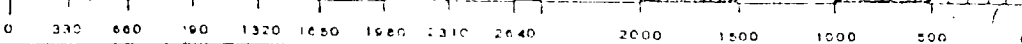
Date Surveyed

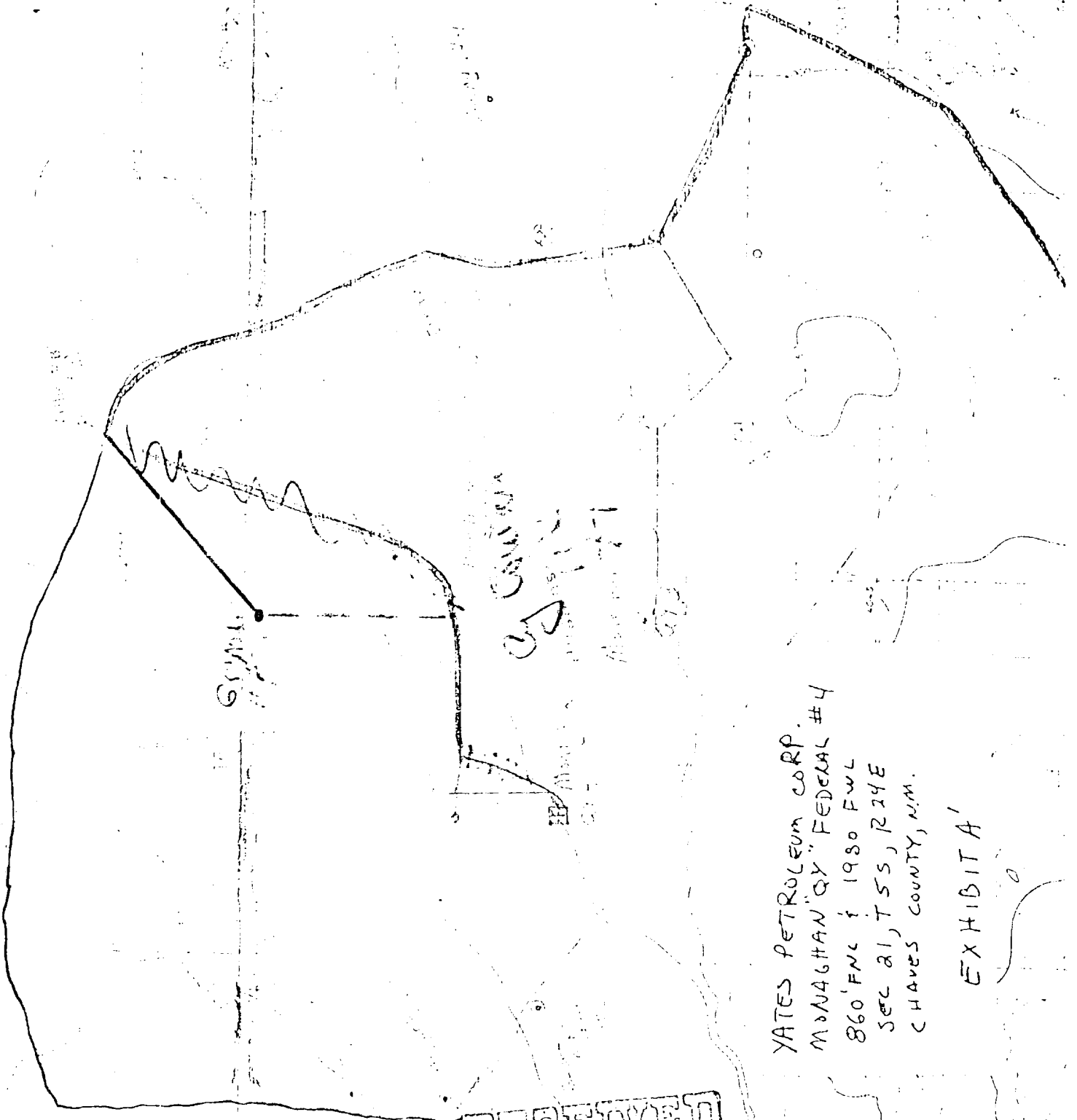
March 22, 1982

Registered Professional Engineer and/or Land Surveyor

Gary L. Jones
Certificate No.

7977





YATES PETROLEUM CORP.
MONAGHAN QY "FEDERAL #4"
860' FNL & 1980 FWL
SEC 21, T5S, R24E
CHAVES COUNTY, N.M.

EXHIBIT A

DECEMBER
APR 01 1982

OIL & GAS
U.S. GEOLOGICAL SURVEY
ROSWell, NEW MEXICO

NEW MEXICO OIL CONSERVATION COMMISSION
WELL LOCATION AND ACREAGE DEDICATION PLAT

Form C-102
Supersedes C-128
Effective 1-1-65

All distances must be from the outer boundaries of the Section.

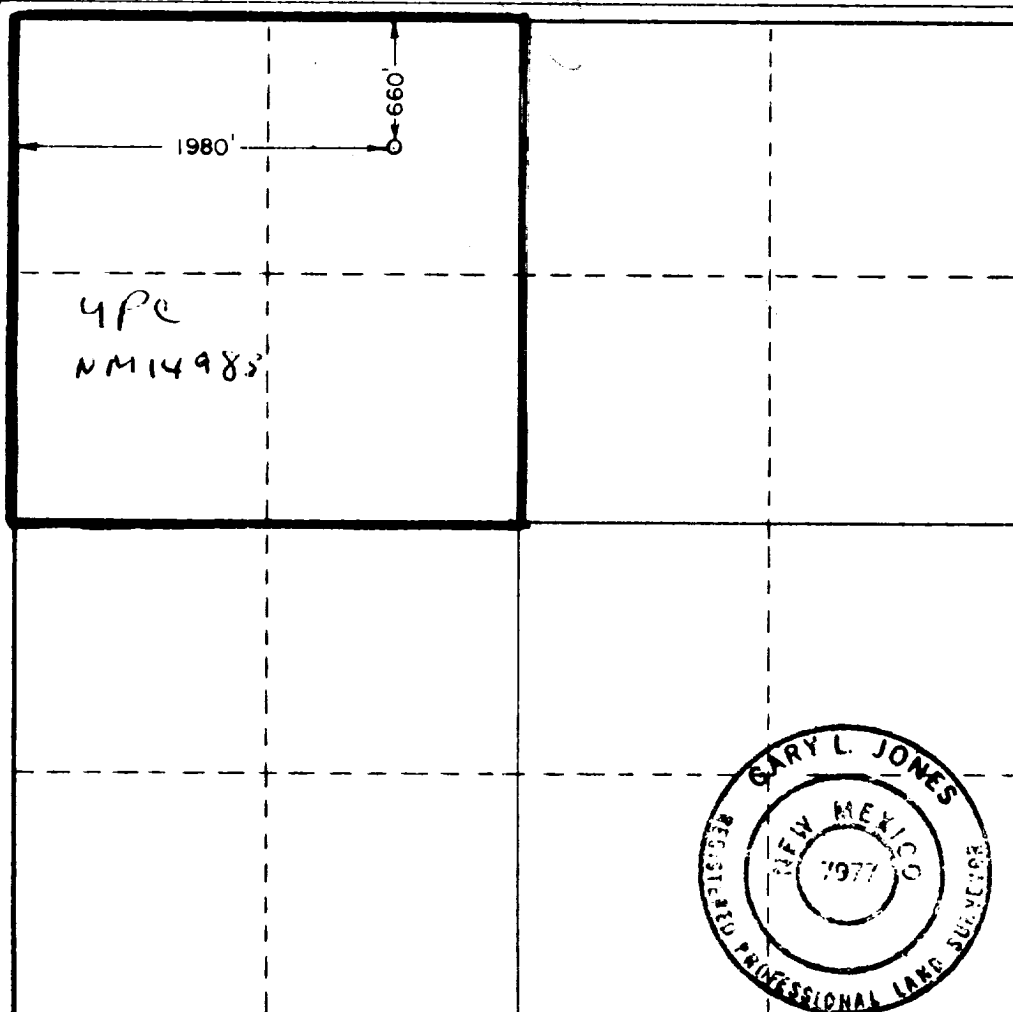
Operator YATES PETROLEUM CORPORATION			Lease Monaghan "QY" Federal		Well No. 4
Unit Letter C	Section 21	Township 5 South	Range 24 East	County Chaves	
Actual Footage Location of Well:					
660 feet from the North line and		1980 feet from the West line			
Ground Level Elev. 4004.4'	Producing Formation Abo	Pool Undes. Pecos Slope Abo		Dedicated Acreage: 160	Acres

1. Outline the acreage dedicated to the subject well by colored pencil or hachure marks on the plat below.
2. If more than one lease is dedicated to the well, outline each and identify the ownership thereof (both as to working interest and royalty).
3. If more than one lease of different ownership is dedicated to the well, have the interests of all owners been consolidated by communitization, unitization, force-pooling, etc?

☐ Yes ☐ No If answer is "yes," type of consolidation _____

If answer is "no," list the owners and tract descriptions which have actually been consolidated. (Use reverse side of this form if necessary.) _____

No allowable will be assigned to the well until all interests have been consolidated (by communitization, unitization, forced-pooling, or otherwise) or until a non-standard unit, eliminating such interests, has been approved by the Commission.



CERTIFICATION

I hereby certify that the information contained herein is true and complete to the best of my knowledge and belief.

Gliserio Rodriguez

Name
Gliserio Rodriguez

Position
Regulatory Manager

Company
Yates Petroleum Corporation

Date
3/8/82

I hereby certify that the well location shown on this plat was plotted from field notes of actual surveys made by me or under my supervision, and that the same is true and correct to the best of my knowledge and belief.

Date Surveyed

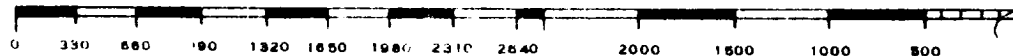
3/4/82

Registered Professional Engineer and/or Land Surveyor

Gary L. Jones

Certificate No.

7977



Yates Petroleum Corporation
Monaghan "JY" Federal #4
660 FNL & 1980 FWL
Section 21, T5S R24E
Chaves County, New Mexico

In conjunction with Form 9 - 331C, Application for Permit to Drill subject well, Yates Petroleum Corporation submits the following ten (10) items of pertinent information in accordance with USGS requirements:

1. The geologic surface formation is sandy alluvium.
2. The estimated tops of geologic markers are as follows:

San Andres	551	Fullerton	2929
Glorieta	1523	TD	4225
Abo	3539		

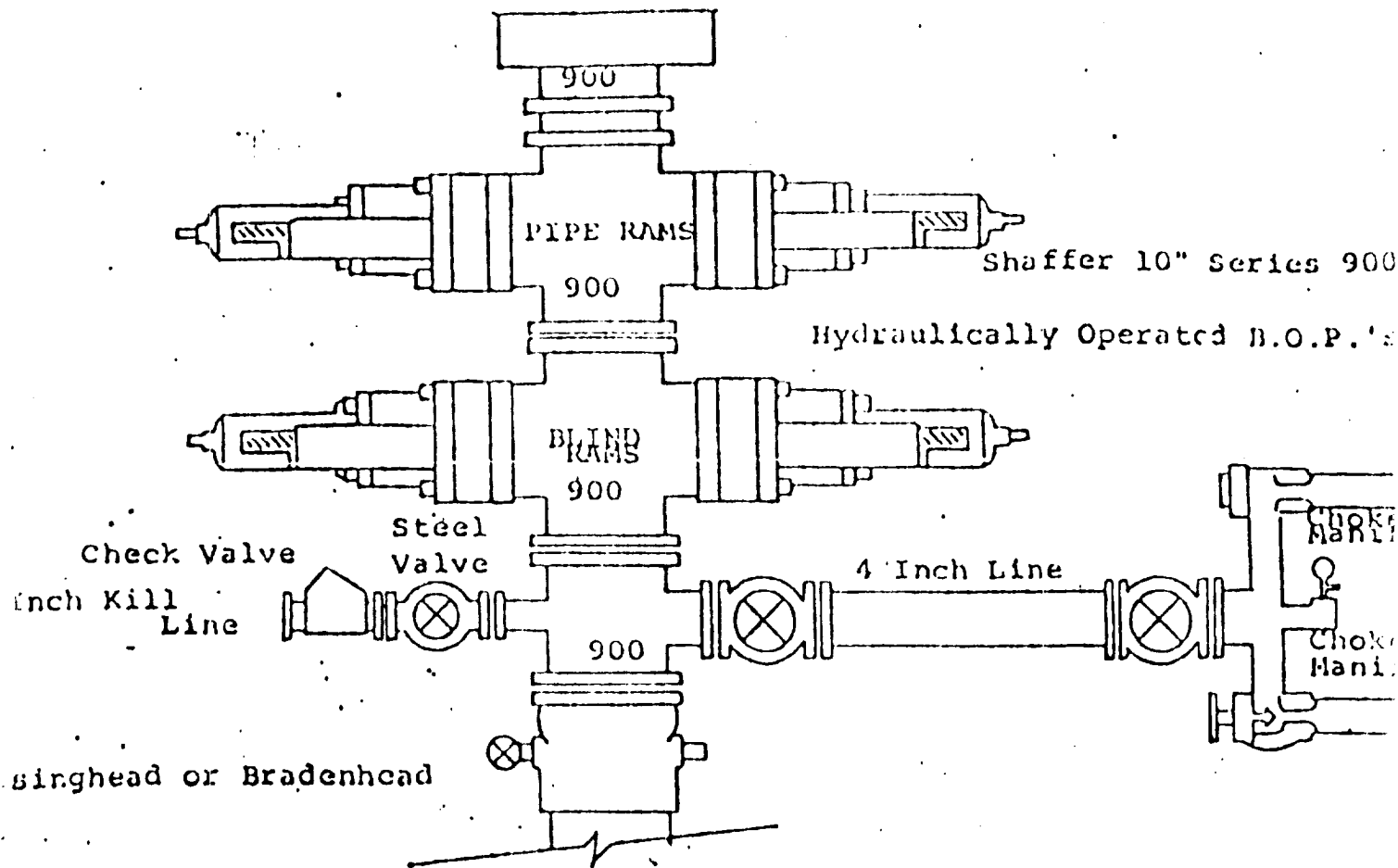
3. The estimated depths at which anticipated water, oil, or gas formations are expected to be encountered:

Water: Approximately 200' - 250'
Oil or Gas Abo 3560'

4. Proposed Casing Program: See Form 9 - 331C.
5. Proposed Control Equipment: See Form 9 - 331C.
6. Mud Program: See Form 9 - 331C and Exhibit B.
7. Auxiliary Equipment: Kelly Cock, pit level indicators and flow sensor equipment; sub with full - opening valve on floor, drill pipe connection.
8. Testing, Logging, and Coring Program:

Samples: Surface casing to TD.
DST'S : As warranted.
Logging: Surface casing to TD.
Coring: CNL - FDC TD to casing with GR - CNL on to surface and DLL from TD to casing.
9. No abnormal pressures or temperatures are anticipated.
10. Anticipated starting date: As soon as possible after approval.

EXHIBIT B



FOLLOWING CONSTITUTE MINIMUM BLOWOUT PREVENTER REQUIREMENTS

- All preventers to be hydraulically operated with secondary manual controls installed prior to drilling out from under casing.
- Choke outlet to be a minimum of 4" diameter.
- Kill line to be of all steel construction of 2" minimum diameter.
- All connections from operating manifolds to preventers to be all steel hole or tube a minimum of one inch in diameter.
- The available closing pressure shall be at least 15% in excess of that required with sufficient volume to operate the B.O.P.'s.
- All connections to and from preventer to have a pressure rating equivalent to that of the B.O.P.'s.
- Inside blowout preventer to be available on rig floor.
- Operating controls located a safe distance from the rig floor.
- Hole must be kept filled on trips below intermediate casing. Operator not responsible for blowouts resulting from not keeping hole full.
- D. P. float must be installed and used below zone of first gas intrusion.