

NM OIL CONS. COMMISSION  
Drawer D1  
Artesia, UNITED STATES  
DEPARTMENT OF THE INTERIORSUBMIT IN TRIPLICATE\*  
(Other instructions on  
reverse side)Form approved.  
Budget Bureau No. 42-R1425.30-005-61531  
RECEIVED

C/SF

GEOLOGICAL SURVEY

5. LEASE DESIGNATION AND SERIAL NO.

NM-25473

6. IF INDIAN, ALLIGATOR OR TRIBAL  
APR 7 19827. UNIT AGREEMENT NAME  
C. D.

ARTESIA, OFFICE

8. FARM OR LEASE NAME

Savage "NI" Federal

9. WELL NO.

2

10. FIELD AND POOL, OR WILDCAT

Undesignated Abo

11. SEC., T., R., M., OR BLK.  
AND SURVEY OR AREA

Section 19-T6S-R26E

12. COUNTY OR PARISH

Chaves

13. STATE

New Mexico

1a. TYPE OF WORK

DRILL ☒DEEPEN ☐PLUG BACK ☐

b. TYPE OF WELL

OIL  
WELL ☐GAS  
WELL ☒

OTHER

SINGLE  
ZONE ☐MULTIPLE  
ZONE ☐

2. NAME OF OPERATOR

Yates Petroleum Corporation

3. ADDRESS OF OPERATOR

207 W. 4th St. Artesia, New Mexico 88210

4. LOCATION OF WELL (Report location clearly and in accordance with any State requirements.)

At surface  
660' FSL and 1650' FEL

At proposed prod. zone

Same

14. DISTANCE IN MILES AND DIRECTION FROM NEAREST TOWN OR POST OFFICE\*

31 miles northeast of Roswell, NM

15. DISTANCE FROM PROPOSED\*

LOCATION TO NEAREST  
PROPERTY OR LEASE LINE, FT.  
(Also to nearest drlg. unit line, if any)

660'

16. NO. OF ACRES IN LEASE

320

17. NO. OF ACRES ASSIGNED  
TO THIS WELL

160

18. DISTANCE FROM PROPOSED LOCATION\*

TO NEAREST WELL, DRILLING, COMPLETED,  
OR APPLIED FOR, ON THIS LEASE, FT.

2300'

19. PROPOSED DEPTH

4250'

20. ROTARY OR CABLE TOOLS

Rotary

21. ELEVATIONS (Show whether DF, RT, GR, etc.)

3706 GR

22. APPROX. DATE WORK WILL START\*

ASAP

23.

## PROPOSED CASING AND CEMENTING PROGRAM

SIZE OF HOLE	SIZE OF CASING	WEIGHT PER FOOT	SETTING DEPTH	QUANTITY OF CEMENT
12 1/4"	8 5/8"	24#	Approx. 950'	625 Sx Circulated
7 7/8"	4 1/2"	10.5#	4250'	350 Sx

We propose to drill and test the Abo and intermediate formations. Approximately 950' of surface casing will be set and cement circulated to shut off gravel and caving. If needed (lost circulation) 7" intermediate casing will be run to 1500' and cemented with enough cement calculated to tie back into the surface casing. Temperature survey will be run to determine cement top. If commercial, production casing will be run and cemented with adequate cover, perforate, and stimulate as needed for production.

MUD PROGRAM: FW Gel and LCM to 950'. Brine to 3200'. Brine and KCL water to TD.

BOP PROGRAM: BOP's will be installed on the 8 5/8" casing and tested daily.

Gas not dedicated.

IN ABOVE SPACE DESCRIBE PROPOSED PROGRAM: If proposal is to deepen or plug back, give data on present productive zone and proposed new productive zone. If proposal is to drill or deepen directionally, give pertinent data on subsurface locations and measured and true vertical depths. Give blowout preventer program, if any.

24.

SIGNED

*George H. Stewart*

TITLE

Agent for:

Yates Petroleum Corporation

DATE

March 22, 1982

(This space for Federal or State office use)

PERMIT NO.	APPROVAL DATE
APPROVED	
APPROVED BY (Type, Sd.)	TITLE
GEORGE H. STEWART	
CONDITIONS OF APPROVAL, IF ANY:	DATE
APR 2 1982	
FOR	
JAMES A. GILLHAM	
DISTRICT SUPERVISOR	

\*See Instructions On Reverse Side

Posted ID-1  
APL + NL Book  
4-9-82

All distances must be from the outer boundaries of the Section.

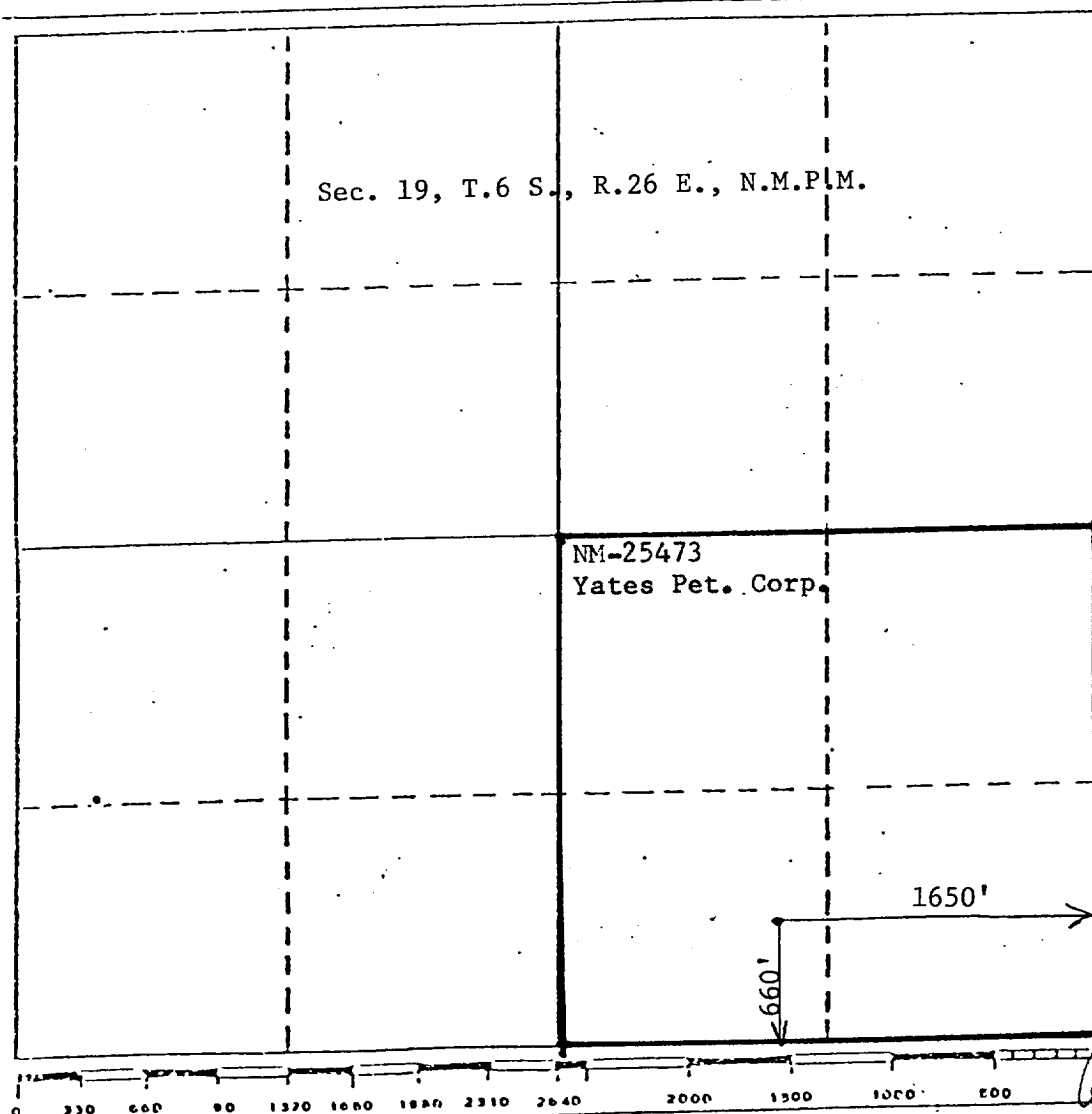
Operator <b>Yates Petroleum Corp.</b>		Lease <b>Savage "NI" Federal</b>		Well No. <b>#2</b>	
Unit Letter <b>0</b>	Section <b>19</b>	Township <b>6 South</b>	Range <b>26 East</b>	County <b>Chaves</b>	
Actual Postage Location of Well: <b>660</b> feet from the <b>South</b> line and <b>1650</b> feet from the <b>East</b> line					
Ground Level Elev. <b>3706</b>	Producing Formation <b>Abo</b>		Pool <b>Undesignated Pool Slope: N.W.</b>		Dedicated Acreage: <b>160</b> Acres

1. Outline the acreage dedicated to the subject well by colored pencil or hatchure marks on the plat below.
2. If more than one lease is dedicated to the well, outline each and identify the ownership thereof (both as to working interest and royalty).
3. If more than one lease of different ownership is dedicated to the well, have the interests of all owners been consolidated by communitization, unitization, force-pooling, etc?

☐ Yes ☐ No If answer is "yes," type of consolidation \_\_\_\_\_

If answer is "no," list the owners and tract descriptions which have actually been consolidated. (Use reverse side of this form if necessary.) \_\_\_\_\_

No allowable will be assigned to the well until all interests have been consolidated (by communitization, unitization, forced-pooling, or otherwise) or until a non-standard unit, eliminating such interests, has been approved by the Division.



#### CERTIFICATION

I hereby certify that the information contained herein is true and complete to the best of my knowledge and belief.

*George R. Smith*  
Name

George R. Smith

Position

Agent for:

Company

Yates Petroleum Corp.

Date

March 22, 1982

I hereby certify that the well location shown on this plat was plotted from field notes of actual surveys made by me or under my supervision, and that the same is true and correct to the best of my knowledge and belief.

**JOHN D. JAQUESS**  
NEW MEXICO  
Date Surveyed  
March 18, 1982  
Registered Professional Engineer  
and Surveyor  
JOHN D. JAQUESS, P.E. & L.S.  
Certificate No. 6290

APPLICATION FOR DRILLING

YATES PETROLEUM CORPORATION  
Savage "NI" Federal, Well No. 2  
660' FSL & 1650' FEL, Sec. 19-T6S-R26E  
Chaves County, New Mexico  
Lease No.: NM-25473  
(Exploratory Well)

In conjunction with Form 9-331C, Application for Permit to Drill subject well, Yates Petroleum Corporation submits the following items of pertinent information in accordance with MMS requirements:

1. The geologic surface formation is Permian with quaternary alluvium and other surficial deposits.
2. The estimated tops of geologic markers are as follows:

San Andres	795'
Glorieta	1608'
Fullerton	2883'
Abo	3678'
T. D.	4250'
3. The estimated depth at which anticipated water, oil or gas formations are expected to be encountered:  
Water: Approximately 250 - 300 feet for surface water.  
Oil: The San Andres at approximately 1000' - 1200'.  
Gas: The Abo at approximately 3710'.
4. Proposed Casing Program: See Form 9-331C.
5. Pressure Control Equipment: See Form 9-331C and Exhibit "E".
6. Mud Program: See Form 9-331C.
7. Auxiliary Equipment: Kelly cock, pit level monitor and flow sensor equipment, sub with full-opening valve on floor, drill pipe connections.
8. Testing, Logging and Coring Program:  
Samples: Surface casing to TD.  
Drill Stem Tests: As warranted.  
Coring: As warranted.  
Logging: CNL-FDC TD to surface casing.  
GR-CNL TD to surface.  
DLL TD to surface casing.
9. No abnormal pressures or temperatures are anticipated. In the event abnormal pressures are encountered, the proposed mud program will be modified to increase the mud weight.
10. Anticipated starting date: As soon as possible after approval.  
Anticipated completion of drilling operations: Approximately 10 days.

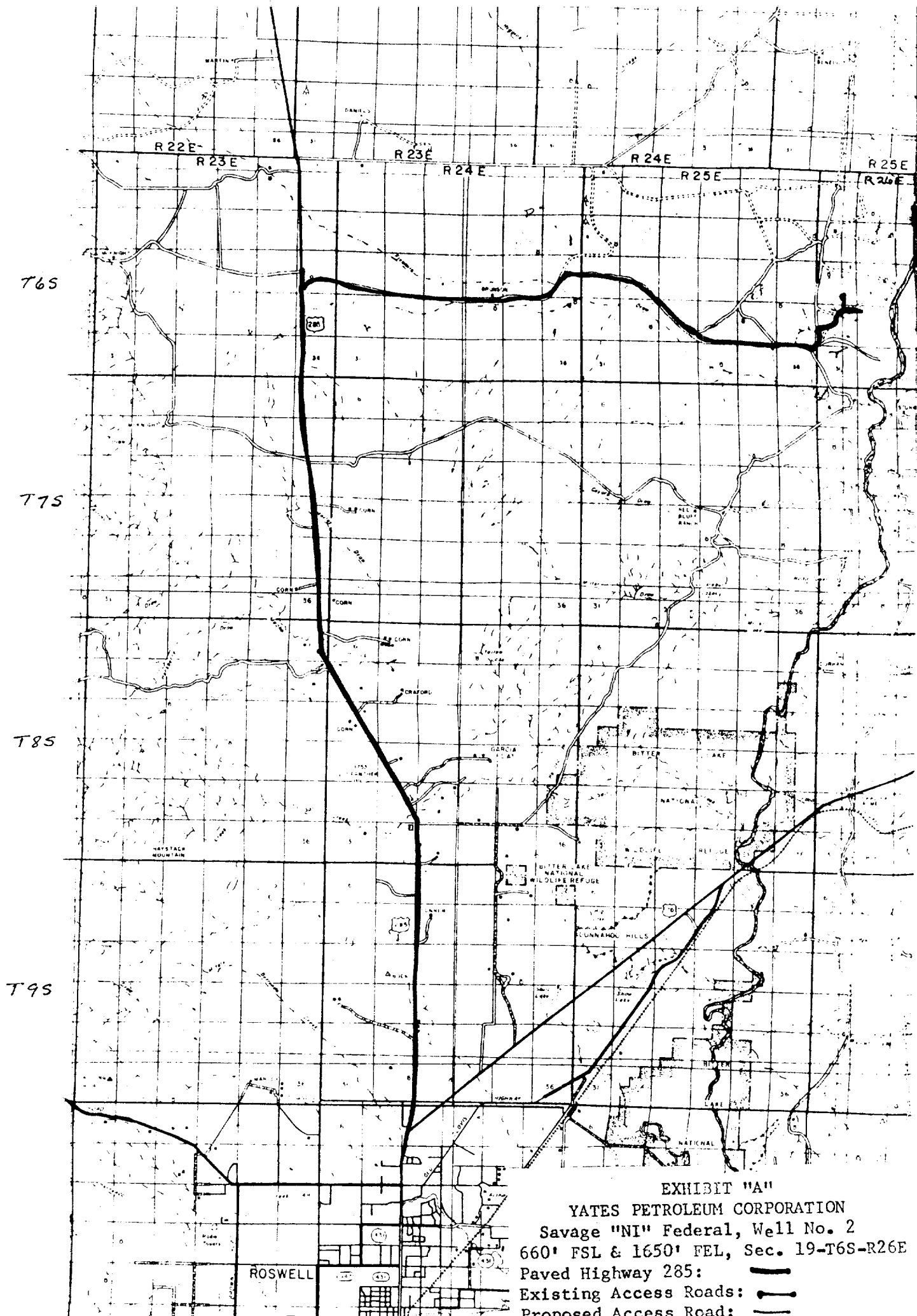





EXHIBIT "A"

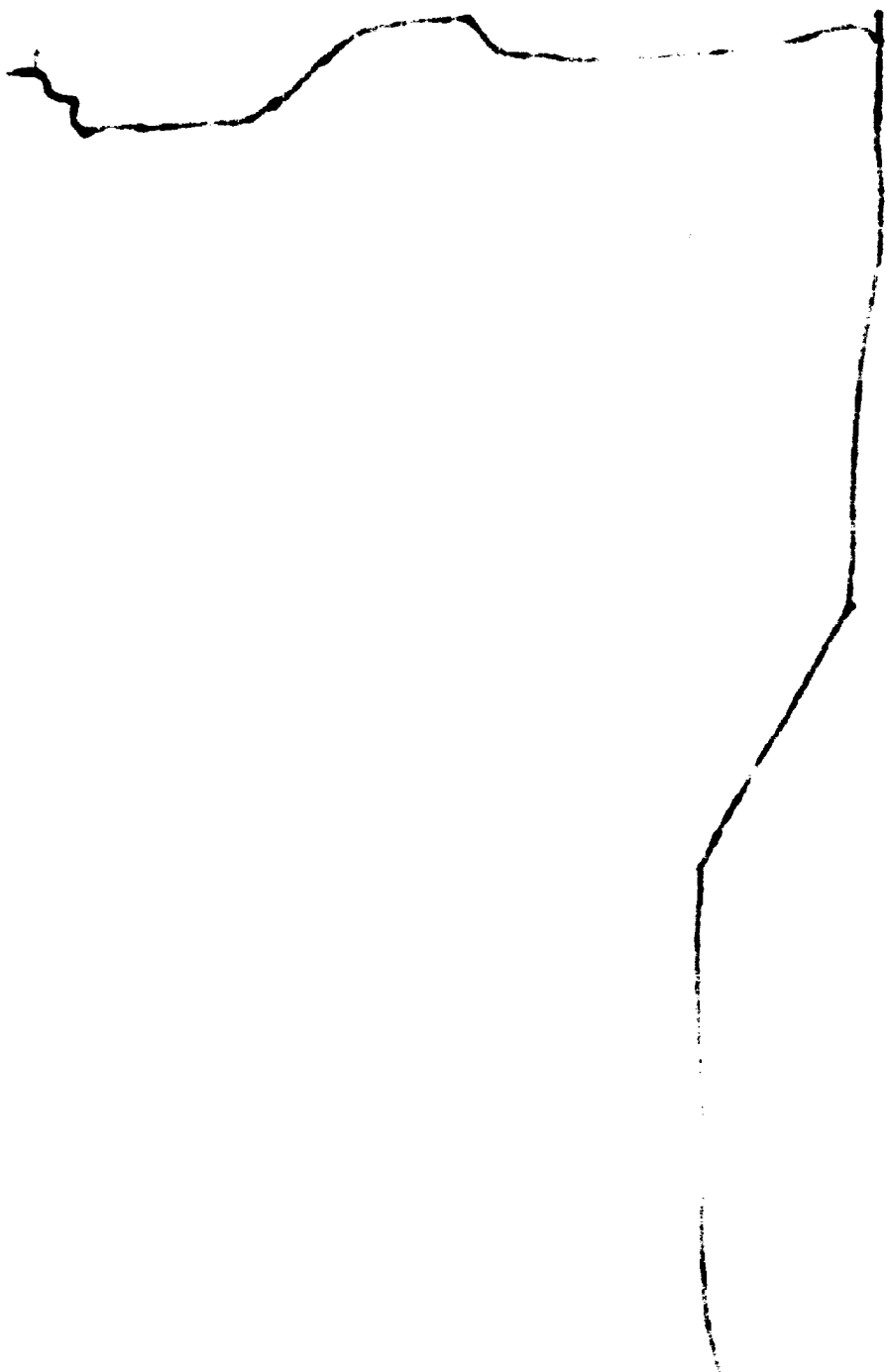
YATES PETROLEUM CORPORATION

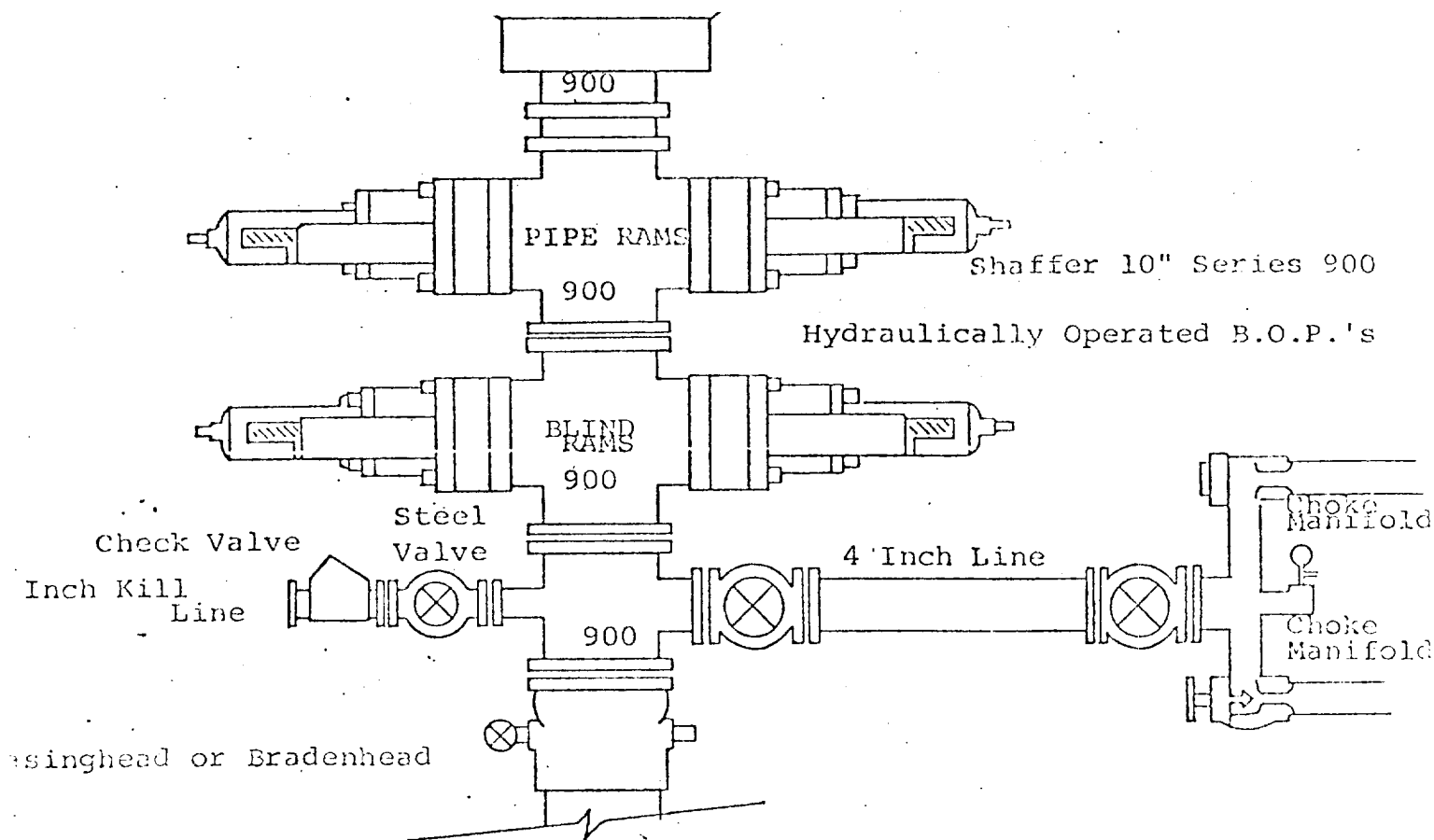
Savage "NI" Federal, Well No. 2

660' FSL & 1650' FEL, Sec. 19-T6S-R26E

- Paved Highway 285: 
- Existing Access Roads: 
- Proposed Access Road: 

1:





THE FOLLOWING CONSTITUTE MINIMUM BLOWOUT PREVENTER REQUIREMENTS

- . All preventers to be hydraulically operated with secondary manual controls installed prior to drilling out from under casing.
- . Choke outlet to be a minimum of 4" diameter.
- . Kill line to be of all steel construction of 2" minimum diameter.
- . All connections from operating manifolds to preventers to be all steel. hole or tube a minimum of one inch in diameter.
- . The available closing pressure shall be at least 15% in excess of that required with sufficient volume to operate the B.O.P.'s.
- . All connections to and from preventer to have a pressure rating equivalent to that of the B.O.P.'s.
- . Inside blowout preventer to be available on rig floor.
- . Operating controls located a safe distance from the rig floor.
- . Hole must be kept filled on trips below intermediate casing. Operator not responsible for blowouts resulting from not keeping hole full.
- . D. P. float must be installed and used below zone of first gas intrusion.

EXHIBIT "E"  
 YATES PETROLEUM CORPORATION  
 Savage "NI" Federal, Well No. 2  
 Blowout Preventer Spec.