

STATE OF NEW MEXICO
ENERGY AND MINERALS DEPARTMENT

NATURAL CONSERVATION DIVISION
P. O. BOX 2088
SANTA FE, NEW MEXICO 87501

30-105-61537
Form C-101
Revised 10-1-78

NO. OF COPIES RECEIVED	
DISTRIBUTION	
SANTA FE	1
FILE	1
U.S.G.S.	2
LAND OFFICE	
OPERATOR	1

APR 12 1982

O. C. D.
ARTESIA OFFICE

5A. Indicate Type of Lease
STATE ☐ FEE ☒

5. State Oil & Gas Lease No.

APPLICATION FOR PERMIT TO DRILL, DEEPEN, OR PLUG BACK

1. Type of Work

2. Type of Well
OIL WELL ☐ GAS WELL ☒ OTHER ☐
DRILL ☒ DEEPEN ☐ PLUG BACK ☐
SINGLE ZONE ☐ MULTIPLE ZONE ☐

3. Name of Operator

Yates Petroleum Corporation

4. Address of Operator

207 S. 4th, Artesia, New Mexico 88210

5. Location of Well

UNIT LETTER P LOCATED 660 FEET FROM THE South LINE

660

FEET FROM THE East LINE OF SEC. 22 TWP. 7S RGE. 25E NMAPM

7. Unit Agreement Name

8. Farm or Lease Name

Bozarth "UC"

9. Well No.

1

10. Field and Pool, or Wildcat

Undes. Pecos Slope

12. County

Chaves

19. Proposed Depth

4100'

19A. Formation

Abo

20. Rotary or C.T.

Rotary

21. Elevations (Show whether DF, KI, etc.)

3640.0 GL

21A. Kind & Status Plug. Bond

Blanket

21B. Drilling Contractor

Stewart Bros. 51

22. Approx. Date Work will start

ASAP

PROPOSED CASING AND CEMENT PROGRAM

SIZE OF HOLE	SIZE OF CASING	WEIGHT PER FOOT	SETTING DEPTH	SACKS OF CEMENT	EST. TOP
14 3/4"	10 3/4"	40.5# J-55	850'	750 sx	circulated
7 7/8"	4 1/2"	9.5#	TD	350 sx	

We propose to drill and test the Abo and intermediate formations. Approximately 850' of surface casing will be set and cement circulated to shut off gravel and caving. If needed (lost circulation) 8 5/8" intermediate casing will be run to 1500' and cemented with enough cement calculated to tie back into the surface casing. If commercial, production casing will be run and cemented with adequate cover, perforated and stimulated as needed for production.

MUD PROGRAM: FW gel and LCM to 850', Brine to 3500', Drispak & starch to TD.

BOP PROGRAM: BOP's will be installed at the offset and tested daily.

GAS NOT DEDICATED.

APPROVAL VALID FOR 180 DAYS
PERMIT EXPIRES 10-13-84
UNLESS DRILLING UNDERWAY

ABOVE SPACE DESCRIBE PROPOSED PROGRAM; IF PROPOSAL IS TO DEEPEN OR PLUG BACK, GIVE DATA ON PRESENT PRODUCTIVE ZONE AND PROPOSED NEW PRODUCTION ZONE. GIVE BLOWOUT PREVENTER PROGRAM, IF ANY.

I hereby certify that the information above is true and complete to the best of my knowledge and belief.

Signed A. J. Cowan Title Regulatory Coordinator Date 4/9/82

(This space for State Use)

APPROVED BY Mike Walker TITLE OIL AND GAS INSPECTOR

DATE APR 13 1982

CONDITIONS OF APPROVAL, IF ANY:

Notify N.M.O.C.C. in sufficient
time to witness cementing
the 10 3/4 casing

NEW MEXICO OIL CONSERVATION COMMISSION
WELL LOCATION AND ACREAGE DEDICATION PLAT

Form C-102
Supersedes C-128
Effective 1-1-65

All distances must be from the outer boundaries of the Section.

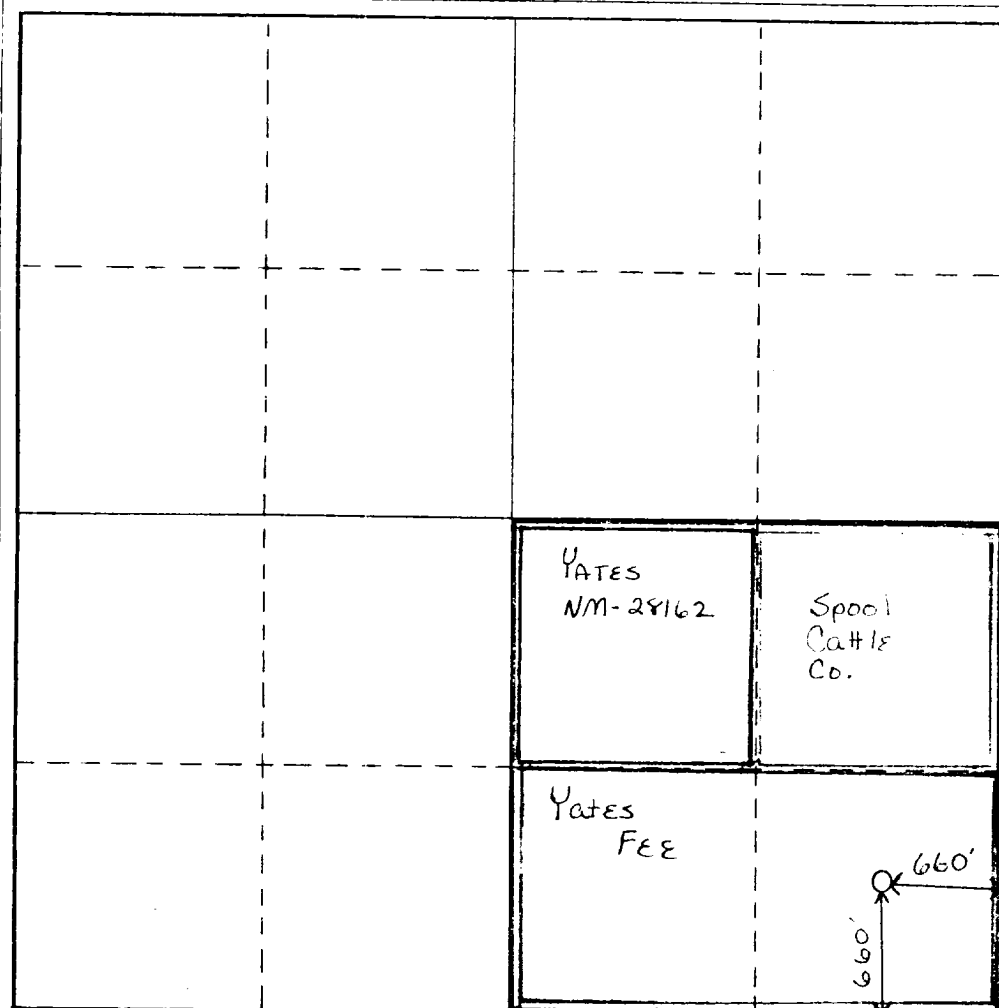
Operator YATES PETROLEUM CORPORATION			Lease Bozarth "UC"		Well No. 1
Unit Letter P	Section 22	Township 7 South	Range 25 East	County Chaves	
Actual Footage Location of Well: 660 feet from the South line and 660 feet from the East line					
Ground Level Elev. 3640.0 GL	Producing Formation ABO		Foot PECOS Slope ABO		Dedicated Acreage 160 Acres

- Outline the acreage dedicated to the subject well by colored pencil or hatchure marks on the plat below.
- If more than one lease is dedicated to the well, outline each and identify the ownership thereof (both as to working interest and royalty).
- If more than one lease of different ownership is dedicated to the well, have the interests of all owners been consolidated by communitization, unitization, force-pooling, etc?

☐ Yes ☒ No If answer is "yes," type of consolidation to be communitized

If answer is "no," list the owners and tract descriptions which have actually been consolidated. (Use reverse side of this form if necessary.)

No allowable will be assigned to the well until all interests have been consolidated (by communitization, unitization, forced-pooling, or otherwise) or until a non-standard unit, eliminating such interests, has been approved by the Commission.

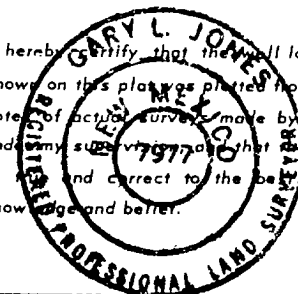


CERTIFICATION

I hereby certify that the information contained herein is true and complete to the best of my knowledge and belief.

Name
Cy Cowan
Position
Regulatory Coordinator
Company
Yates Petroleum Corp.
Date
4/9/82

I hereby certify that the well location shown on this plat was plotted from field notes of actual surveys made by me or under my supervision and that the same is true and correct to the best of my knowledge and belief.

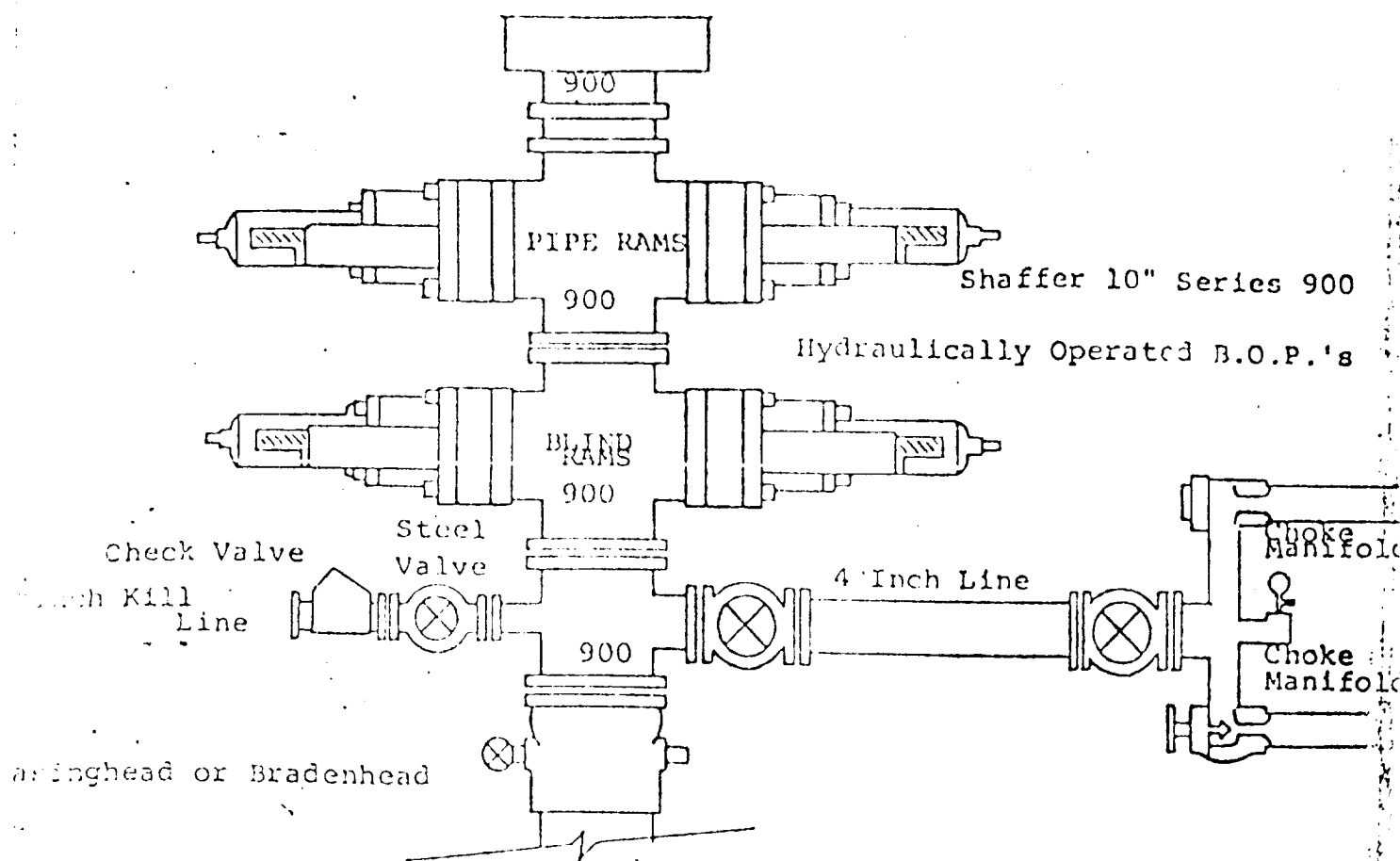


Date Surveyed
April 5, 1982
Registered Professional Engineer and/or Land Surveyor

Certificate No.

7977

Exhibit B



FOLLOWING CONSTITUTE MINIMUM BLOWOUT PREVENTER REQUIREMENTS

- . All preventers to be hydraulically operated with secondary manual control installed prior to drilling out from under casing.
- . Choke outlet to be a minimum of 4" diameter.
- . Kill line to be of all steel construction of 2" minimum diameter.
- . All connections from operating manifolds to preventers to be all steel. hole or tube a minimum of one inch in diameter.
- . The available closing pressure shall be at least 15% in excess of that required with sufficient volume to operate the B.O.P.'s.
- . All connections to and from preventer to have a pressure rating equivalent to that of the B.O.P.'s.
- . Inside blowout preventer to be available on rig floor.
- . Operating controls located a safe distance from the rig floor.
- . Hole must be kept filled on trips below intermediate casing. Operator not responsible for blowouts resulting from not keeping hole full.
- . D. P. float must be installed and used below zone of first gas intrusion.