

STATE OF NEW MEXICO
ENERGY AND MINERALS DEPARTMENT

OIL CONSERVATION DIVISION

P. O. BOX 2088

SANTA FE, NEW MEXICO 87501

APR 20 1982

O. C. D.

ARTESIA OFFICE

Form C-101
Revised 10-1-78

NO. OF COPIES RECEIVED	
DISTRIBUTION	
SANTA FE	1
FILE	1
U.S.G.S.	2
LAND OFFICE	
OPERATOR	1

5A. Indicate Type of Lease
STATE ☐ FEE ☒

5. State Oil & Gas Lease No.
N/A

7. Unit Agreement Name
N/A

8. Farm or Lease Name
O'Brien "D.B."

9. Well No.
1

10. Field and Pool, or Wildcat
Twin Lakes-San Andres Association

12. County
Chaves

APPLICATION FOR PERMIT TO DRILL, DEEPEN, OR PLUG BACK

1a. Type of Work

DRILL ☒

DEEPEN ☐

PLUG BACK ☐

b. Type of Well

OIL WELL ☒

GAS WELL ☐

OTHER

SINGLE ZONE ☐

MULTIPLE ZONE ☐

2. Name of Operator

Stevens Operating Corporation

3. Address of Operator

P. O. Box 2408, Roswell, NM 88201

4. Location of Well

UNIT LETTER I LOCATED 1650 FEET FROM THE South LINE

AND 330 FEET FROM THE East LINE OF SEC. 12 TWP. 9S RGE. 28E NMPM

19. Proposed Depth

2800'

19A. Formation

San Andres

20. Rotary or C.T.

Rotary

21. Elevations (show whether DF, RT, etc.)

3928.0'

21A. Kind & Status Plug. bond

Statewide

21B. Drilling Contractor

22. Approx. Date Work will start

May 3, 1982

23.

PROPOSED CASING AND CEMENT PROGRAM

SIZE OF HOLE	SIZE OF CASING	WEIGHT PER FOOT	SETTING DEPTH	SACKS OF CEMENT	EST. TOP
12 1/4"	8 5/8"	23.0#	130'	75 SXS	
7 7/8"	4 1/2"	9.5#	2800'	250 SXS	

Will drill with water and mud to T.D., log, and if indicated productive, case to T.D. and perforate in producing intervals.

Adequate blowout preventers will be used.

Posted ID-1
APE + NL Bonds
4-23-82

APPROVAL VALID FOR 180 DAYS
PERMIT EXPIRES 10-23-82
UNLESS DRILLING UNDERWAY

IN ABOVE SPACE DESCRIBE PROPOSED PROGRAM; IF PROPOSAL IS TO DEEPEN OR PLUG BACK, GIVE DATA ON PRESENT PRODUCTIVE ZONE AND PROPOSED NEW PRODUCTIVE ZONE, GIVE BLOWOUT PREVENTER PROGRAM, IF ANY.

I hereby certify that the information above is true and complete to the best of my knowledge and belief.

Signed Pat Thompson Title Production Coordinator Date 4/19/82
(This space for State Use)

APPROVED BY Mike Walker TITLE Oil and Gas Inspector DATE APR 23 1982
CONDITIONS OF APPROVAL, IF ANY:

NEW MEXICO OIL CONSERVATION COMMISSION
WELL LOCATION AND ACREAGE DEDICATION PLAT

Form C-102
Supersedes C-128
Effective 1-1-65

All distances must be from the outer boundaries of the Section

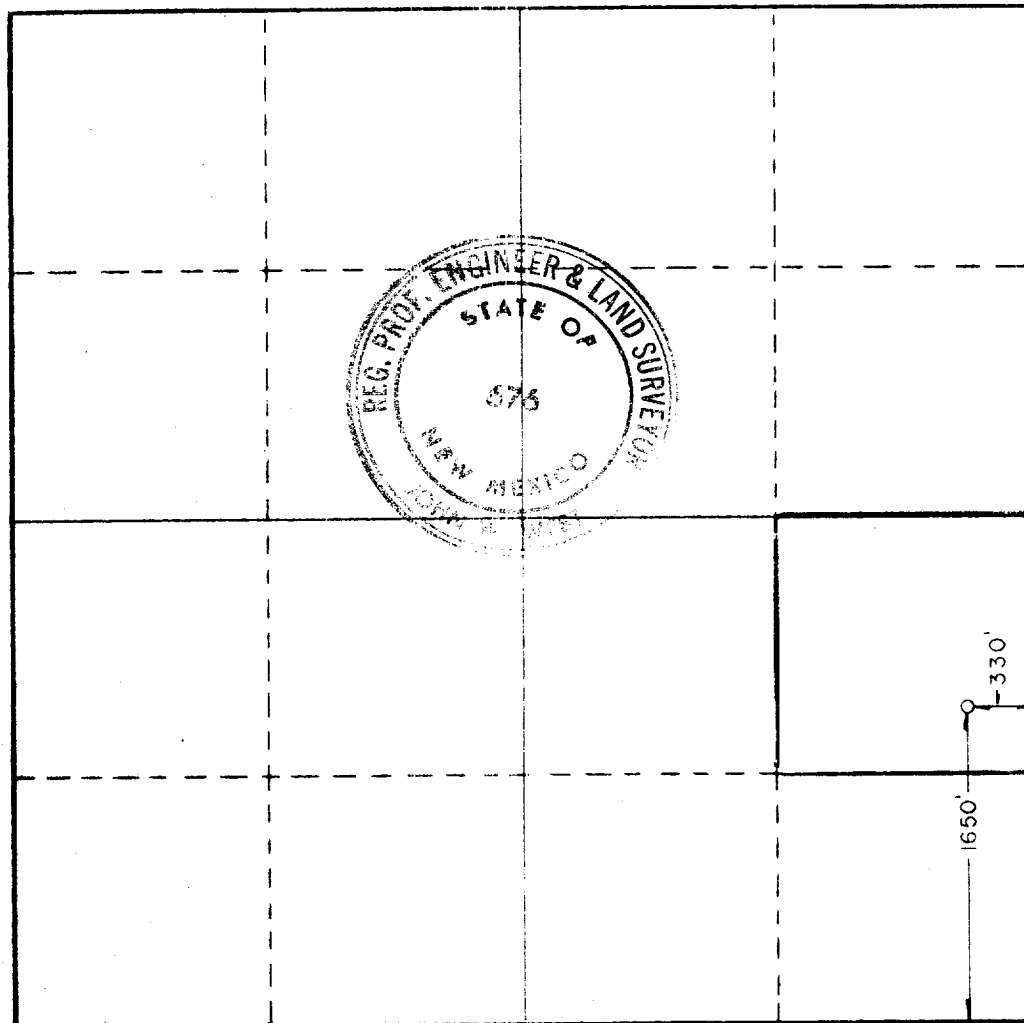
Operator Stevens Operating Corp			Lease O'Brien D. B.		Well No. 1
Unit Letter I	Section 12	Township 9 South	Range 28 East	County Chaves	
Actual Footage Location of Well: 1650 feet from the south line and 330 feet from the east line					
Ground Level Elev. 3928.0'	Producing Formation San Andres		Pool Twin Lakes-San Andres Assoc		Dedicated Acreage: 40 Acres

1. Outline the acreage dedicated to the subject well by colored pencil or hachure marks on the plat below.
2. If more than one lease is dedicated to the well, outline each and identify the ownership thereof (both as to working interest and royalty).
3. If more than one lease of different ownership is dedicated to the well, have the interests of all owners been consolidated by communitization, unitization, force-pooling, etc?

☐ Yes ☐ No If answer is "yes," type of consolidation _____

If answer is "no," list the owners and tract descriptions which have actually been consolidated. (Use reverse side of this form if necessary.) _____

No allowable will be assigned to the well until all interests have been consolidated (by communitization, unitization, forced-pooling, or otherwise) or until a non-standard unit, eliminating such interests, has been approved by the Commission.



CERTIFICATION

I hereby certify that the information contained herein is true and complete to the best of my knowledge and belief.

Pat Thompson

Name
Pat Thompson
Position
Production Coordinator
Company
Stevens Operating Corporation
Date
4/19/82

I hereby certify that the well location shown on this plat was plotted from field notes of actual surveys made by me or under my supervision, and that the same is true and correct to the best of my knowledge and belief.

Date Surveyed
4-14-82
Registered Professional Engineer and/or Land Surveyor
John W. West
Certificate No. **JOHN W. WEST 676**
PATRICK A. ROMERO 6863
Ronald J. Eidson 3239

