

RECEIVED

APR 29 1982

O. C. D.

ARTESIA, OFFICE

30-085-61572

Form C-101  
Revised 10-1-78

NO. OF COPIES RECEIVED	
DISTRIBUTION	
SANTA FE	1
FILE	1
U.S.G.S.	2
LAND OFFICE	
OPERATOR	1

5A. Indicate Type of Lease

STATE ☐FEE ☒

5. State Oil &amp; Gas Lease No.

## APPLICATION FOR PERMIT TO DRILL, DEEPEN, OR PLUG BACK

1. Type of Work

DRILL ☒DEEPEN ☐PLUG BACK ☐

2. Type of Well

OIL WELL ☐GAS WELL ☒OTHER ☐SINGLE ZONE ☐MULTIPLE ZONE ☐

Name of Operator

Artesia Petroleum Corporation ✓

Address of Operator

07 S. 4th, Artesia, New Mexico 88210

Location of Well

UNIT LETTER K

LOCATED 1980

FEET FROM THE South LINE

1980 FEET FROM THE West LINE OF SEC. 8 TWP. 6S RGE. 26E

7. Unit Agreement Name

8. Form or Lease Name

Caudill "RZ"

9. Well No.

2

10. Field and Pool, or Wildcat

Undes. Pecos Slope

Abo

12. County

Chaves

19. Proposed Depth

4250'

19A. Formation

Abo

20. Rotary or C.T.

Rotary

21. Elevations (Show whether DF, KT, etc.)

3686.3' GL

21A. Kind &amp; Status Plug. Bond

Blanket

21B. Drilling Contractor

LaRue

22. Approx. Date Work will start

ASAP

## PROPOSED CASING AND CEMENT PROGRAM

SIZE OF HOLE	SIZE OF CASING	WEIGHT PER FOOT	SETTING DEPTH	SACKS OF CEMENT	EST. TOP
14 3/4"	10 3/4"	40.5#	950'	800 sx	circulated
7 7/8"	4 1/2"	9.5#	TD	350 sx	

We propose to drill and test the Abo and intermediate formations. Approximately 950' of surface casing will be set and cement circulated to shut off gravel and caving. If needed (lost circulation) 8 5/8" intermediate casing will be run to 1500' and cemented with enough cement calculated to tie back into the surface casing. If commercial, production casing will be run and cemented with adequate cover, perforated and stimulated as needed for production.

MUD PROGRAM: FW gel and LCM to 950', Brine to 3500', Brine & KCL-water to TD.

BOP PROGRAM: BOP's will be installed at the offset and tested daily.

GAS NOT DEDICATED.

APPROVAL VALID FOR 180 DAYS

PERMIT EXPIRES 10-30-82

UNLESS DRILLING UNDERWAY

ABOVE SPACE DESCRIBE PROPOSED PROGRAM; IF PROPOSAL IS TO DEEPEN OR PLUG BACK, GIVE DATA ON PRESENT PRODUCTIVE ZONE AND PROPOSED NEW PRODUCTION ZONE. GIVE BLOWOUT PREVENTER PROGRAM, IF ANY.

I hereby certify that the information above is true and complete to the best of my knowledge and belief.

SIGNED

By Cowan Title Regulatory Coordinator

Date 4/29/82

(This space for State Use)

PROVED BY

TITLE

OIL AND GAS INSPECTOR

DATE

APR 30 1982

CONDITIONS OF APPROVAL, IF ANY:



NEW MEXICO OIL CONSERVATION COMMISSION  
WELL LOCATION AND ACREAGE DEDICATION PLAT

Form C-102  
Supersedes C-128  
Effective 1-1-65

All distances must be from the outer boundaries of the Section.

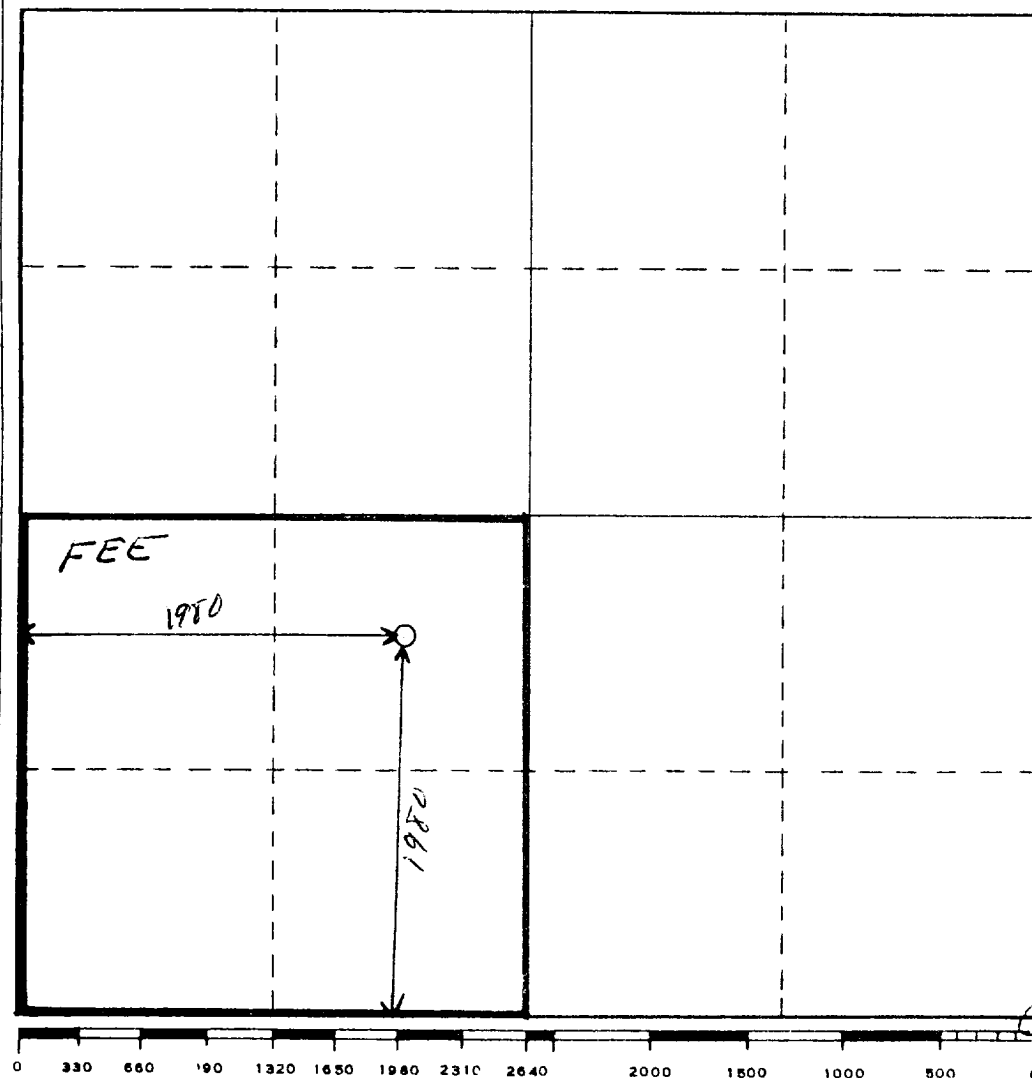
Operator <b>YATES PETROLEUM CORPORATION</b>			Lease <b>Caudill "RZ"</b>		Well No. <b>2</b>
Unit Letter <b>K</b>	Section <b>8</b>	Township <b>6 South</b>	Range <b>26 East</b>	County <b>Chaves</b>	
Actual Footage Location of Well: <b>1980</b> feet from the <b>South</b> line and <b>1980</b> feet from the <b>West</b> line					
Ground Level Elev. <b>3686.3' GL</b>	Producing Formation <b>ABO</b>		Pool <b>PECOS Slope ABO</b>	Dedicated Acreage: <b>160</b> Acres	

1. Outline the acreage dedicated to the subject well by colored pencil or hachure marks on the plat below.
2. If more than one lease is dedicated to the well, outline each and identify the ownership thereof (both as to working interest and royalty).
3. If more than one lease of different ownership is dedicated to the well, have the interests of all owners been consolidated by communitization, unitization, force-pooling, etc?

☐ Yes    ☐ No    If answer is "yes," type of consolidation \_\_\_\_\_

If answer is "no," list the owners and tract descriptions which have actually been consolidated. (Use reverse side of this form if necessary.) \_\_\_\_\_

No allowable will be assigned to the well until all interests have been consolidated (by communitization, unitization, forced-pooling, or otherwise) or until a non-standard unit, eliminating such interests, has been approved by the Commission.



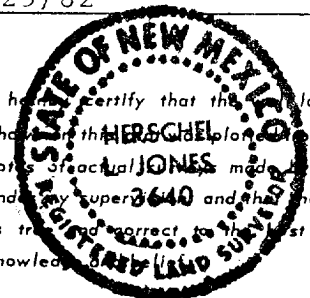
**CERTIFICATION**

I hereby certify that the information contained herein is true and complete to the best of my knowledge and belief.

*Cy Cowan*

Name  
**Cy Cowan**  
Position  
**Regulatory Coordinator**  
Company  
**Yates Petroleum Corp.**  
Date  
**4/29/82**

I hereby certify that the location shown on this plat was obtained from field notes of actual survey made by me or under my supervision and that the same is true and correct to the best of my knowledge.



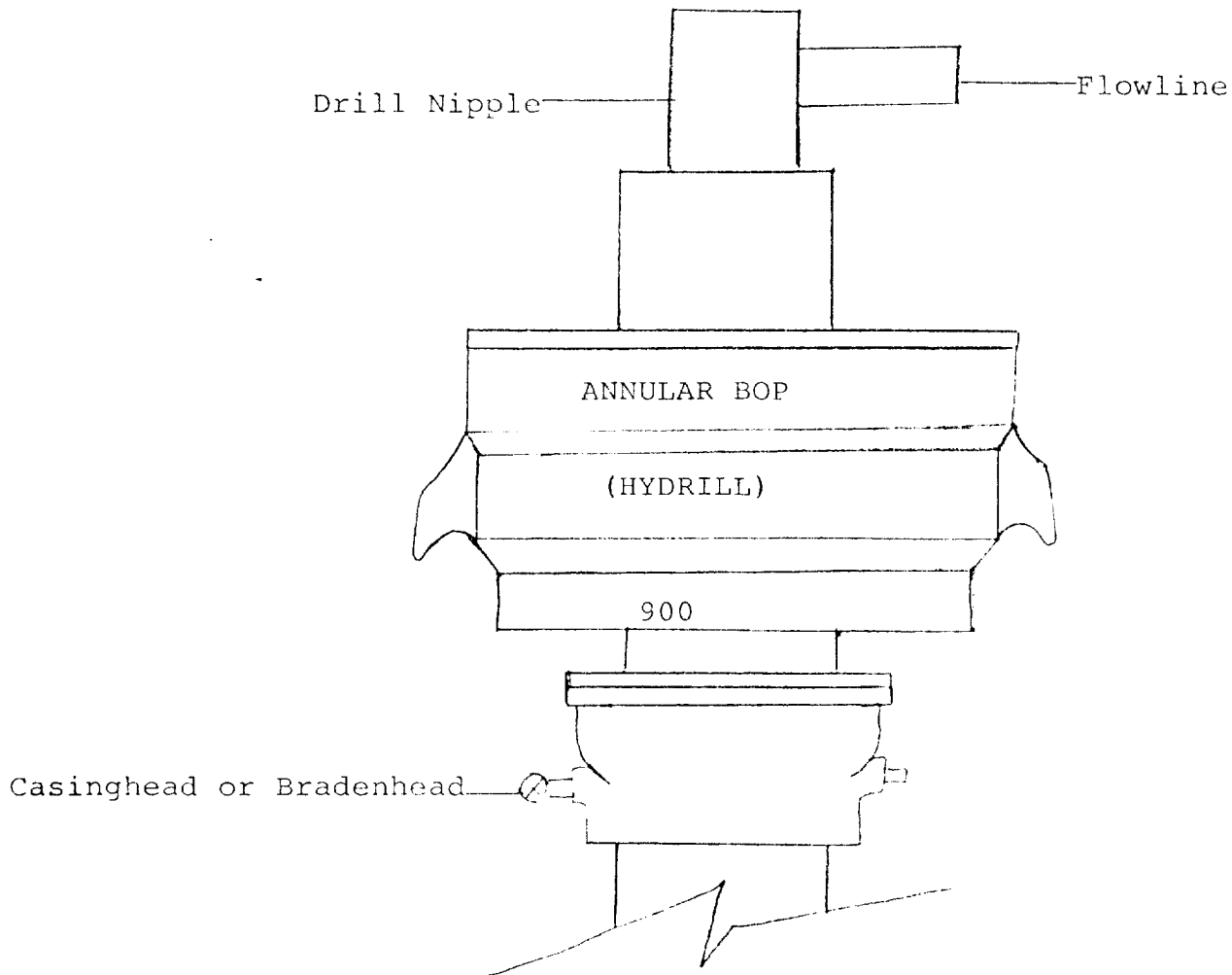
Date Surveyed  
**April 26, 1982**  
Registered Professional Engineer and/or Land Surveyor

*[Signature]*

Certificate No.

**3640**





THE FOLLOWING CONSTITUTE MINIMUM BLOWOUT PREVENTER REQUIREMENTS

1. All preventers to be hydraulically operated with secondary manual controls installed prior to drilling out from under casing.
2. All connections from operating manifolds to preventers to be all steel. Hole or tube a minimum of one inch in diameter.
3. The available closing pressure shall be at least 15% in excess of that required with sufficient volume to operate the BOP's.
4. All connections to and from preventer to have a pressure rating equivalent to that of the BOP's.
5. Hole must be kept filled on trips below intermediate casing. Operator not responsible for blowouts resulting from not keeping hole full.