

UNITED STATES
DEPARTMENT OF THE INTERIOR
GEOLOGICAL SURVEYc/SF
APPLICATION FOR PERMIT TO DRILL, DEEPEN, OR PLUG BACK

1a. TYPE OF WORK

DRILL ☒DEEPEN ☐PLUG BACK ☐

b. TYPE OF WELL

OIL
WELL ☐GAS
WELL ☒

OTHER

SINGLE
ZONE ☒MULTIPLE
ZONE ☐

2. NAME OF OPERATOR

MESA PETROLEUM CO. ✓

3. ADDRESS OF OPERATOR

1000 VAUGHN BUILDING/MIDLAND, TEXAS 79701-4493

4. LOCATION OF WELL (Report location clearly and in accordance with any State requirements.)
At surface 1980' FSL & 460' FEL NE 1/4 SE 1/4

At proposed prod. zone SAME

NE SE
UT-I

14. DISTANCE IN MILES AND DIRECTION FROM NEAREST TOWN OR POST OFFICE*

27 miles North/Northeast of Roswell, New Mexico

15. DISTANCE FROM PROPOSED*

LOCATION TO NEAREST

PROPERTY OR LEASE LINE, FT.

(Also to nearest drilg. unit line, if any) 660' / 660'

18. DISTANCE FROM PROPOSED LOCATION*

TO NEAREST WELL, DRILLING, COMPLETED,

OR APPLIED FOR, ON THIS LEASE, FT. 6000'

21. ELEVATIONS (Show whether DF, RT, GR, etc.)

3569' GR

16. NO. OF ACRES IN LEASE

430.85

19. PROPOSED DEPTH

4450'

17. NO. OF ACRES ASSIGNED
TO THIS WELL

160

20. ROTARY OR CABLE TOOLS

ROTARY

22. APPROX. DATE WORK WILL START*

APRIL 28, 1982

23.

PROPOSED CASING AND CEMENTING PROGRAM

QUANTITY OF CEMENT

SIZE OF HOLE	SIZE OF CASING	WEIGHT PER FOOT	SETTING DEPTH	QUANTITY OF CEMENT
14 3/4"	10 3/4"	40.5#	950'	SURFACE
9 1/2"	7 5/8"	23# or 26.4#	1600'	ISOLATE WATER, OIL & GAS
7 7/8" / 6 1/2"	4 1/2" / 5 1/2"	10.5#	4450'	COVER ALL PAY

Propose to drill 14 3/4" hole with mud or air to approximately 950' and run 10 3/4" casing. Will cement to surface and test casing with cementing head to 600 psi. Will reduce hole to 9 1/2" and drill on mud or air to approximately 1600' and run 7 5/8" casing if circulation has been lost and cement with sufficient amounts to tie-back to 10 3/4" casing. Will then reduce hole to 6 1/2" or 6 1/4", test BOP's and casing and drill to total depth. If hole conditions are favorable, the 7 5/8" casing will be omitted and the hole will be reduced to 7 7/8" and drilled to total depth. Either 4 1/2" or 5 1/2" casing will be run as production casing depending upon hole sized drilled to TD.

Operator's gas sales are dedicated.

APR 7 1982
Produced by
APR 7 1982
5-9-82

XC: MMS (6) TLS, CEN RCDS, ACCTG, MEC, LAND, ROSWELL, REMOFILE, (PARTNERS)
IN ABOVE SPACE DESCRIBE PROPOSED PROGRAM: If proposal is to deepen or plug back, give data on present productive zone and proposed new productive zone. If proposal is to drill or deepen directionally, give pertinent data on subsurface locations and measured and true vertical depths. Give blowout preventer program, if any.

24.

SIGNED

R. F. Mark

REGULATORY COORDINATOR

DATE 4-6-82

(This space for Federal or State office use)

APPROVED

PERMIT NO.

(Orig. Sgd.) GEORGE H. STEWART

APPROVAL DATE

APPROVED BY

CONDITIONS OF APPROVAL

APR 23 1982

FOR

JAMES A. GILLHAM
DISTRICT SUPERVISOR

TITLE

DATE

*See Instructions On Reverse Side

NSL-1522 5/13/82

All distances must be from the outer boundaries of the Section.

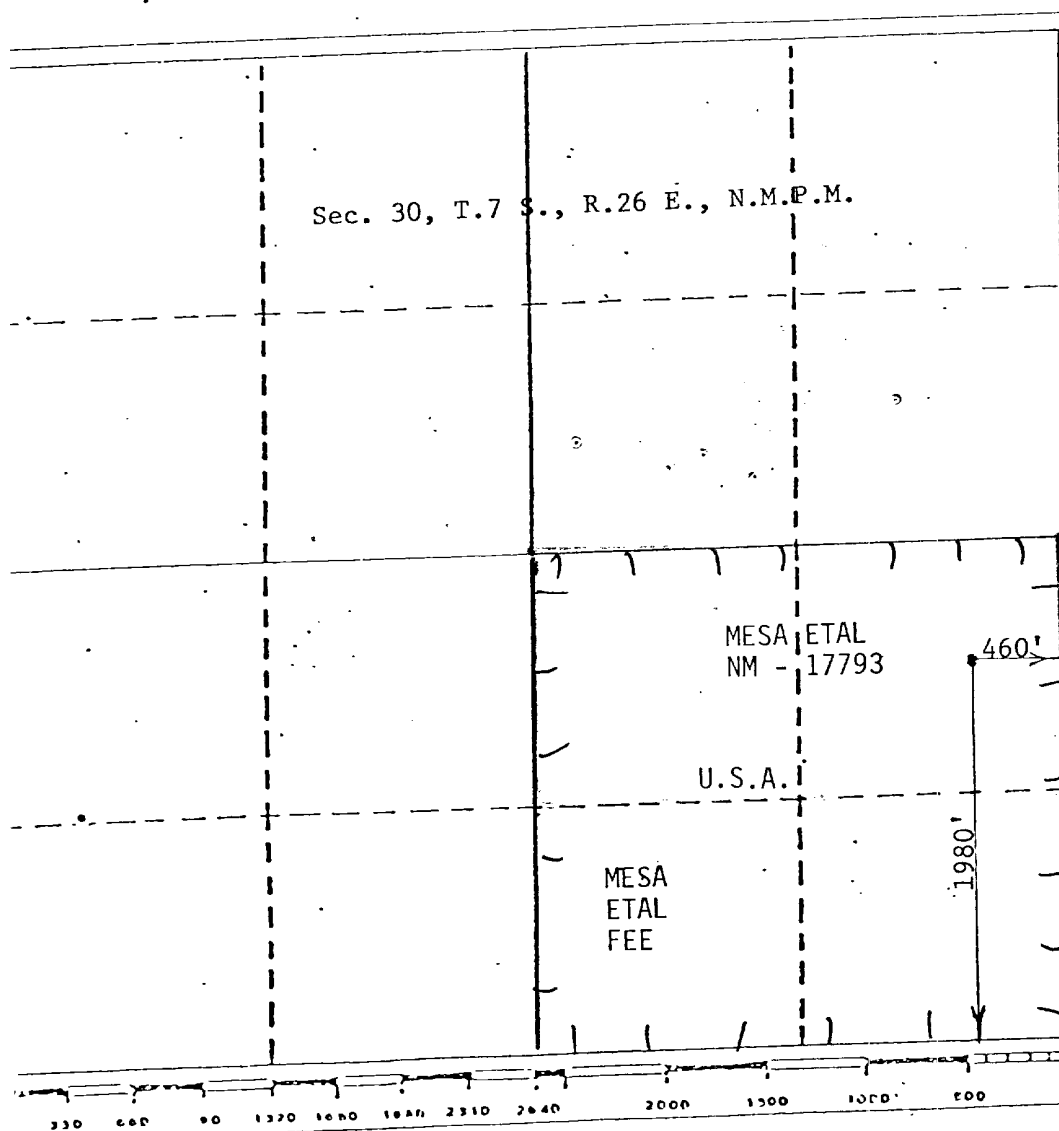
Mesa Petroleum Co.		Lease		Crawford Federal		Well No. #1	
Letter	Section	Township	Range	County			
I	30	7 South	26 East	Chaves			
Well Postage Location of Well:		East		1980		South	
460		feet from the		line and		feet from the	
line		line		line		line	
Sound Level Elev.		Producing Formation		Pool		Dedicated Acreage:	
3569		ABO		UNDESIGNATED		SE/4 160 Acres	

1. Outline the acreage dedicated to the subject well by colored pencil or hatchure marks on the plat below.
2. If more than one lease is dedicated to the well, outline each and identify the ownership thereof (both as to working interest and royalty).
3. If more than one lease of different ownership is dedicated to the well, have the interests of all owners been consolidated by communitization, unitization, force-pooling, etc?

☐ Yes ☐ No If answer is "yes," type of consolidation COMMUNITIZATION IN PROGRESS

If answer is "no," list the owners and tract descriptions which have actually been consolidated. (Use reverse side of this form if necessary.)

No allowable will be assigned to the well until all interests have been consolidated (by communitization, unitization, forced-pooling, or otherwise) or until a non-standard unit, eliminating such interests, has been approved by the Division.



CERTIFICATION

I hereby certify that the information contained herein is true and complete to the best of my knowledge and belief.

R. E. Mathis

Name

R. E. MATHIS

Position

REGULATORY COORDINATOR

Company

MESA PETROLEUM COMPANY

Date

4-6-82

I hereby certify that the well location shown on this plat was plotted from field notes of actual surveys made by me or under my supervision, and that the same is true and correct to the best of my knowledge and belief.

John D. Jaquess

JOHN D. JACQUESS
NEW MEXICO
APRIL 1, 1982
6290
Registered Professional Engineer
and/or Licensed Surveyor
John D. Jaquess, P.E. & L.S.
Certificate No. 6290

APPLICATION FOR PERMIT TO DRILL

MESA PETROLEUM CO.
CRAWFORD FED COM #1
1980' FSL & 660' FEL, SEC 30, T7S, R26E
CHAVES COUNTY, NEW MEXICO

LEASE NO. NM-17793

In conjunction with Form 9331-C, Application For Permit to Drill subject well, the following additional information is provided:

1. Applicable portions of the GENERAL REQUIREMENTS FOR OIL AND GAS OPERATIONS ON FEDERAL LEASES, Roswell District, Geological Survey of September 1, 1980 will be adhered to.

2. Geological markers are estimated as follows:

SEVEN RIVERS	Surface
SAN ANDRES	457'
GLORIETA	1394'
TUBB	2985'
ABO	3657'

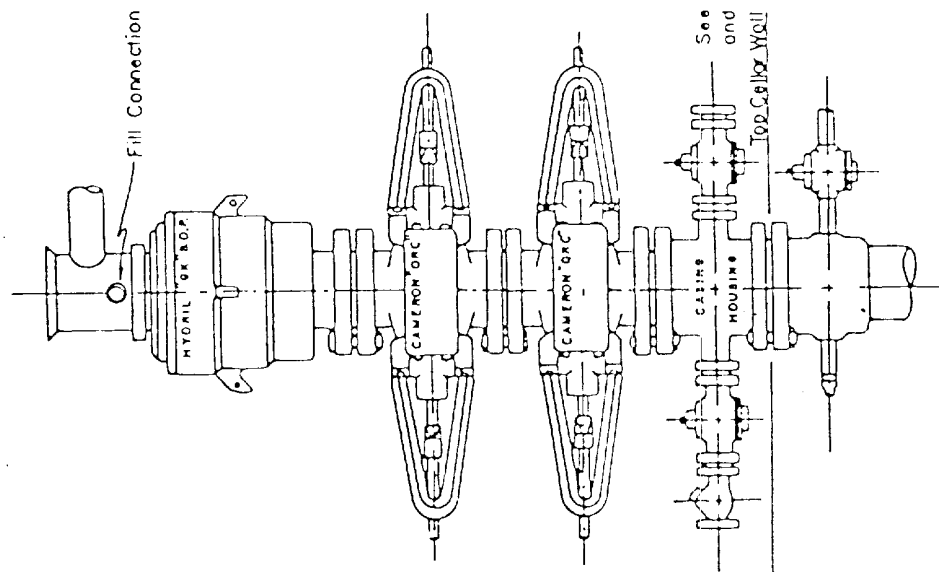
3. Hydrocarbon bearing strata may occur in the ABO formation(s). No fresh water is expected to be encountered below 900'.

4. The Casing and Blowout Preventer Program will be determined by hole conditions as encountered. See Exhibit VI. Anticipate drilling with mud, air or foam using ram type preventer and rotating head for well control. The 10 3/4" casing will be set at approximately 950' to protect any fresh water zones and cemented to the surface. The 7 5/8" casing will be set at approximately 1600' if water zones have been encountered or omitted if not and ram type preventers installed. Sufficient amounts and kinds of cement would be used to ensure any water, gas, or oil zones encountered are isolated and shut off down to the casing point if run. The 4 1/2" production casing will be set at total depth or shallower depending upon the depth of the deepest commercial hydrocarbon bearing strata encountered.

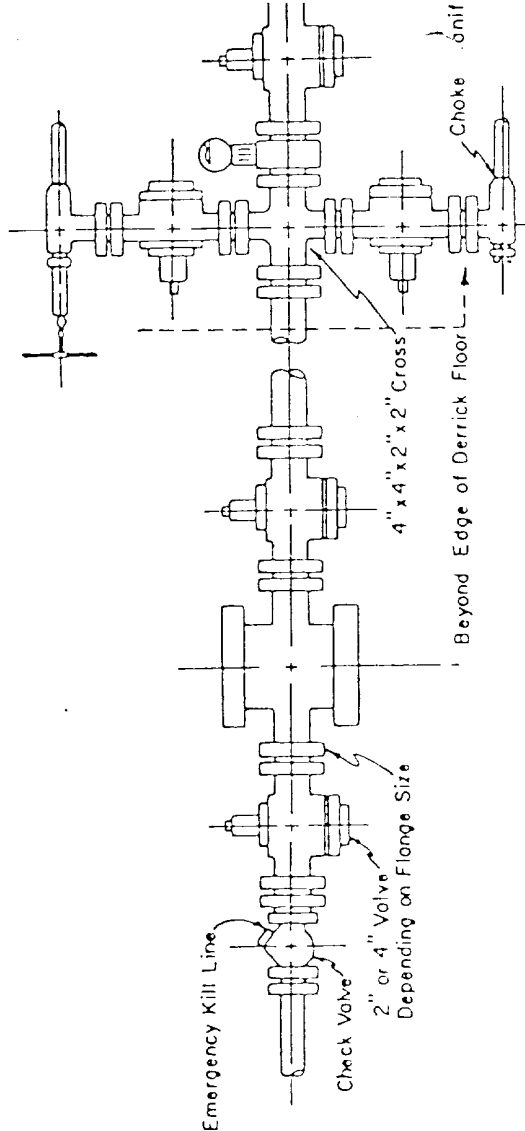
5. No drill stem test or coring program is planned. The logging program may consist of a GR-CNL from surface total depth and FDC from casing point to total depth.

6. Anticipated drilling time is ten days with completion operations to follow as soon as a completion unit is available.

Blow-out Preventers hydril and choke manifold are of



3,000 PSI WORKING PRESSURE
BLOW-OUT PREVENTER HOOK-UP



3,000 PSI WORKING PRESSURE
KILL, CHOKES, AND FILL CONNECTIONS

DETAIL OF 4" FLOW LINE CHOKES ASSEMBLY

Minimum assembly for 3,000 PSI working pressure will consist of three preventers.
The bottom and middle preventers may be Cameron.

NOTE: HYDRIL, not installed on shallow-low pressure wells.
RAM type ROPs are API 10" X 3000 PSI