

NO. OF COPIES RECEIVED	
DISTRIBUTION	
SANTA FE	1
FILE	1
U.S.G.S.	1
LAND OFFICE	1
OPERATOR	1

NEW MEXICO OIL CONSERVATION COMMISSION

RECEIVED

Form C-101  
Revised 1-1-65

MAY - 4 1982

O. C. D.  
ARTESIA, OFFICE

5A. Indicate Type of Lease	
STATE <input checked="" type="checkbox"/>	FEE <input type="checkbox"/>
5. State Oil & Gas Lease No. V417	

APPLICATION FOR PERMIT TO DRILL, DEEPEN, OR PLUG BACK

1a. Type of Work DRILL <input checked="" type="checkbox"/> DEEPEN <input type="checkbox"/> PLUG BACK <input type="checkbox"/>		7. Unit Agreement Name
b. Type of Well OIL WELL <input type="checkbox"/> GAS WELL <input checked="" type="checkbox"/> OTHER <input type="checkbox"/>		8. Farm or Lease Name New Mexico "CS" State
2. Name of Operator Exxon Corporation		9. Well No. 2
3. Address of Operator P. O. Box 1600, Midland, TX 79702		10. Field and Pool, or Wildcat Wildcat <i>Fluor</i>
4. Location of Well UNIT LETTER <u>J</u> LOCATED <u>1850</u> FEET FROM THE <u>South</u> LINE AND <u>1980</u> FEET FROM THE <u>East</u> LINE OF SEC. <u>2</u> TWP. <u>7S</u> RGE. <u>22E</u> NMPM		12. County Chaves
19. Proposed Depth 3250'		19A. Formation Abo
20. Rotary or C.T. Rotary		
21. Elevations (Show whether DF, RT, etc.) Later	21A. Kind & Status Plug. Bond Blanket	21B. Drilling Contractor Unknown
22. Approx. Date Work will start May 7, 1982		

PROPOSED CASING AND CEMENT PROGRAM

SIZE OF HOLE	SIZE OF CASING	WEIGHT PER FOOT	SETTING DEPTH	SACKS OF CEMENT	EST. TOP
11"	8 5/8"	24#	*1200 1800'	300 sx	Surface
7 7/8"	5 1/2"	14#	3250'	400 sx	Surface

Mud Program:

0-<sup>1200'</sup>~~1800'~~ FW Mud 8.6-9.0  
~~1800~~-3250' Brine  
<sup>1200'</sup>

Type II-B BOP (2000 psi)

Gas is not dedicated to a purchaser.

APPROVAL VALID FOR 180 DAYS  
PERMIT EXPIRES 11-11-82  
UNLESS DRILLING UNDERWAY

IN ABOVE SPACE DESCRIBE PROPOSED PROGRAM: IF PROPOSAL IS TO DEEPEN OR PLUG BACK, GIVE DATA ON PRESENT PRODUCTIVE ZONE AND PROPOSED NEW PRODUCTIVE ZONE. GIVE BLOWOUT PREVENTER PROGRAM, IF ANY.

I hereby certify that the information above is true and complete to the best of my knowledge and belief.

Signed Melba Knippling Title Unit Head Date April 30, 1982  
(This space for State Use)

APPROVED BY Mike Wilton TITLE OIL AND GAS INSPECTOR DATE MAY 11 1982

CONDITIONS OF APPROVAL, IF ANY:

\*as noted above

Notify N.M.O.C.C. in 10 days  
time to witness cementing

the 8 5/8" casing

100-8-

100-8-

100-8-

RECEIVED

RECEIVED  
MAY 8 1982  
FBI  
HONOLULU OFFICE

Exxon Lse. No. \_\_\_\_\_

NEW MEXICO OIL CONSERVATION COMMISSION

RECEIVED

Form C-102  
Supersedes C-128  
Effective 1-1-65

State Lse. No. \_\_\_\_\_

WELL LOCATION AND ACREAGE DEDICATION PLAT

Federal Lse. No. \_\_\_\_\_

All distances must be from the outer boundaries of the Section.

MAY - 7 1982

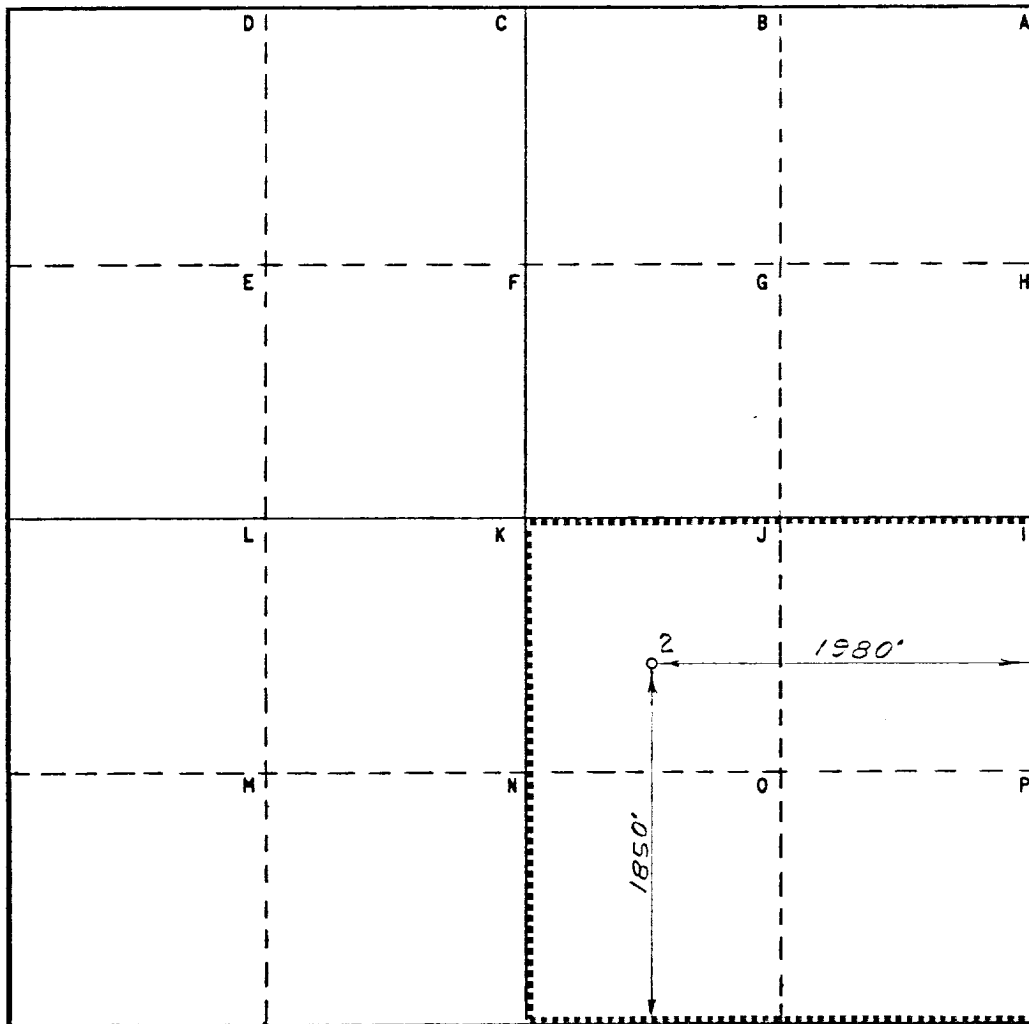
Operator Exxon Corporation		Lease New Mexico "C5" State		Well No. 2
Unit Letter J	Section 2	Township 7 S	Range 22 E	County ARIZONA, OFFICE Chaves
Actual Footage Location of Well: 1850 feet from the South line and 1980' feet from the East line				
Ground Level Elev. Abo	Producing Formation Abo	Pool Wildcat	Dedicated Acreage: 160 Acres	

1. Outline the acreage dedicated to the subject well by colored pencil or hatchure marks on the plat below.
2. If more than one lease is dedicated to the well, outline each and identify the ownership thereof (both as to working interest and royalty).
3. If more than one lease of different ownership is dedicated to the well, have the interests of all owners been consolidated by communitization, unitization, force-pooling, etc?

☐ Yes ☐ No If answer is "yes," type of consolidation \_\_\_\_\_

If answer is "no," list the owners and tract descriptions which have actually been consolidated. (Use reverse side of this form if necessary.) \_\_\_\_\_

No allowable will be assigned to the well until all interests have been consolidated (by communitization, unitization, forced-pooling, or otherwise) or until a non-standard unit, eliminating such interests, has been approved by the Commission.



## CERTIFICATION

I hereby certify that the information contained herein is true and complete to the best of my knowledge and belief.

Name  
*Melba Kripling*  
Position  
UNIT HEAD

Company Exxon Corporation  
Box 1600 Midland, Texas

Date  
4-30-82

I hereby certify that the well location shown on this plat was plotted from field notes of actual surveys made by me or under my supervision, and that the same is true and correct to the best of my knowledge and belief.

Date Surveyed  
4-29-82

Registered Professional Engineer  
and/or Land Surveyor

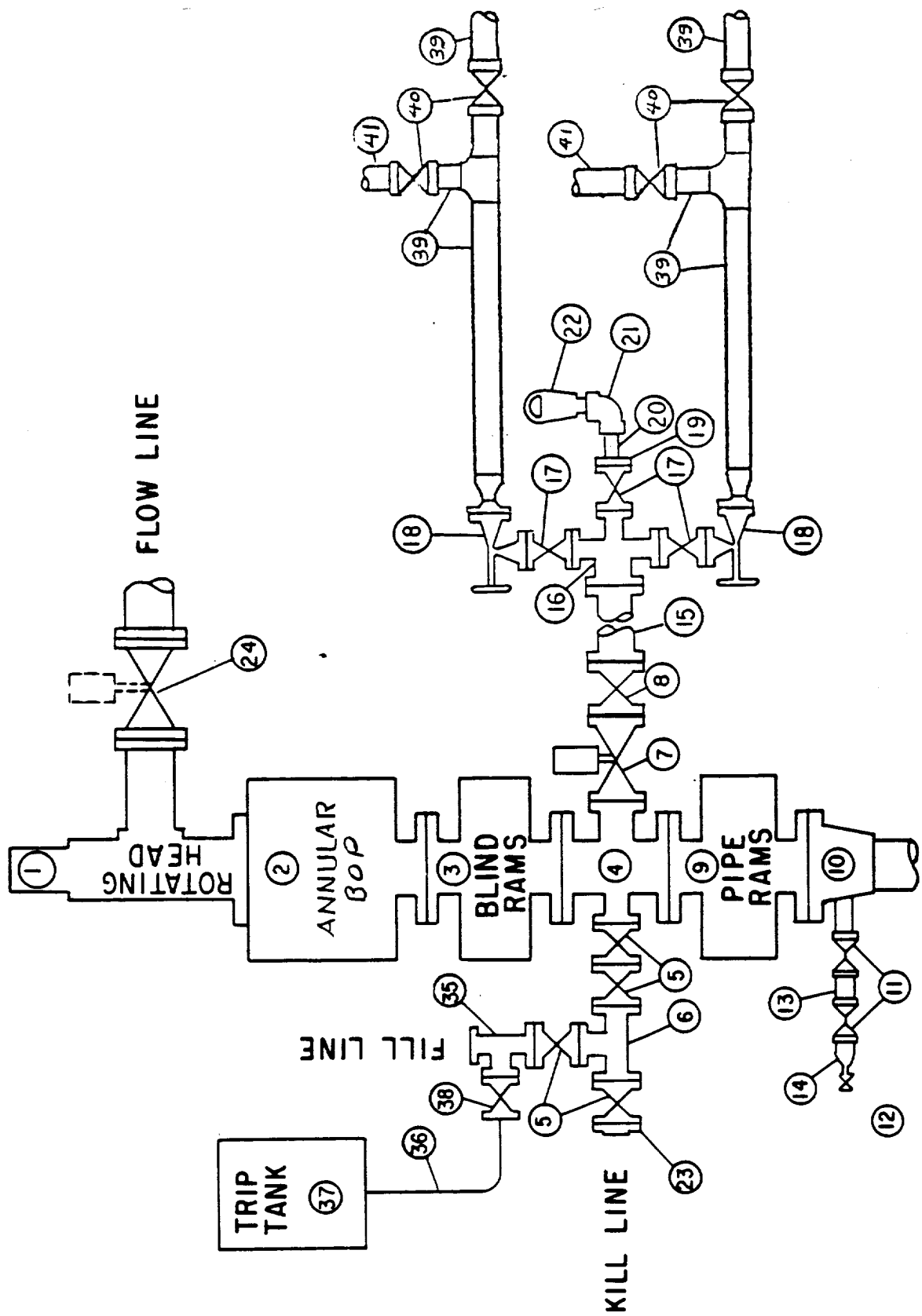
*H. S. Hesterfeld*

Certificate No.  
1382

25 Miles NW of Roswell New Mexico

C.E. Sec. File No. W-A-7634-A

# MIDLAND DRILLING ORGANIZATION BLOWOUT PREVENTER SPECIFICATION TYPE II -B



BLOWOUT PREVENTER SPECIFICATION  
EQUIPMENT DESCRIPTION

TYPE II-B

All equipment should be at least 2000 psi WP or higher unless otherwise specified.

1. Rotating BOP.
2. Hydril or Shaffer bag type preventer.
3. Ram type pressure operated blowout preventer with blind rams.
4. Flanged spool with one 4-inch and one 2-inch (minimum) outlet.
5. 2-inch (minimum) flanged plug or gate valve.
6. 2-inch by 2-inch by 2-inch (minimum) flanged tee.
7. 4-inch pressure operated gate valve.
8. 4-inch flanged gate or plug valve.
9. Ram type pressure operated blowout preventer with pipe rams.
10. Flanged type casing head with one side outlet (furnished by Exxon).
11. 2-inch threaded (or flanged) plug or gate valve (furnished by Exxon).  
Flanged on 5000# WP, threaded on 3000# WP or less.
12. Needle valve (furnished by Exxon).
13. 2-inch nipple (furnished by Exxon).
14. Tapped bull plug (furnished by Exxon).
15. 4-inch flanged spacer spool.
16. 4-inch by 2-inch by 2-inch by 2-inch flanged cross.
17. 2-inch flanged plug or gate valve.
18. 2-inch flanged adjustable choke.
19. 2-inch threaded flange.
20. 2-inch XXH nipple.
21. 2-inch forged steel 90° Ell.
22. Cameron (or equal.) threaded pressure gage.
23. Threaded flange.
24. 6-inch manual or pressure operated gate valve.
25. 2-inch flanged tee.
26. 3-inch (minimum) hose. (Furnished by Exxon).
27. Trip tank. (Furnished by Exxon).
28. 2-inch flanged plug or gate valve.
29. 2-1/2-inch pipe, 300' to pit, anchored.
30. 2-1/2-inch SE valve.
31. 2-1/2-inch line to steel pit or separator.

NOTES:

1. Items 3, 4 and 9 may be replaced with double ram type preventer with side outlets between the rams.
2. The two valves next to the stack on the fill and kill line to be closed unless drill string is being pulled.
3. Kill line is for emergency use only. This connection shall not be used for filling.
4. Replacement pipe rams and blind rams shall be on location at all times.
5. Only type U, LWS and QRC ram type preventers with secondary seals are acceptable for 5000 psi-WP and higher BOP stacks.
6. Type E ram-type BOP's with factory modified side outlets may be used on 3000 psi and lower WP BOP stacks.