

GEOLOGICAL SURVEY

RECEIVED
SUBMIT IN REPLICATE
(Other instructions on reverse side)Form approved.
Budget Bureau No. 42-R1425.30-005-61596
5. LEASE DESIGNATION AND SERIAL NO.

NM-022584

6. IF INDIAN, ALLOTTEE OR TRIBE NAME

N/A

7. AGREEMENT NAME

N/A

8. NAME OR RELEASE NAME

SUM FEDERAL

9. WELL NO.

10. SHED AND POST OFFICE

UNDESIGNATED

11. TWP., R., M. FOR REFERENCE

SEC 28 T-7-S-R-26-E

12. COUNTY OR PARISH

CHAVES NM

13. COUNTY OR PARISH

CHAVES NM

14. DISTANCE IN MILES AND DIRECTION FROM NEAREST TOWN OR POST OFFICE

23.7 air miles northeast of Roswell, New Mexico

15. DISTANCE FROM PROPOSED LOCATION TO NEAREST WELL, DRILLING, COMPLETED, OR APPLIED FOR, ON THIS LEASE, FT.

2800'

16. NO. OF ACRES IN LEASE

1160

17. NO. OF ACRES ASSIGNED TO THIS WELL

160

18. DISTANCE FROM PROPOSED LOCATION TO NEAREST WELL, DRILLING, COMPLETED, OR APPLIED FOR, ON THIS LEASE, FT.

4300 Abo

19. PROPOSED DEPTH

Rotary

20. ROTARY OR CABLE TOOLS

Rotary

21. APPROX. DATE WORK WELL START

May 20, 1982

22. APPROX. DATE WORK WELL START

May 20, 1982

23. PROPOSED CASING AND CEMENTING PROGRAM

SIZE OF HOLE	SIZE OF CASING	WEIGHT PER FOOT	SETTING DEPTH	QUANTITY OF CEMENT
11"	8 5/8"	24.0	200'	Sufficient to circulate
7 7/8"	4 1/2"	12.5	4300'	250 Sacks

After setting and cementing production string, pay zones will be perforated and stimulated as needed for production.

Attached are:

1. Well Location and Acreage Dedication Plat
2. Supplemental Drilling Data
3. Surface Use Plan

Gas is not dedicated.

IN ABOVE SPACE DESCRIBE PROPOSED PROGRAM: If proposal is to deepen or plug back, give data on present productive zone and proposed new productive zone. If proposal is to drill or deepen directionally, give pertinent data on subsurface locations and measured and true vertical depths. Give blowout preventer program, if any.

24. SIGNED *Pat Thompson* TITLE Production Clerk DATE April 28, 1982

Pat Thompson APPROVED
(This space for Federal or State use only)

PERMIT NO. (Orig. Sec.) GEORGE H. STEVENS

APPROVAL DATE

APPROVED BY
CONDITIONS OF APPROVAL, IF ANY:

TITLE

DATE

JAMES A. GILLHAM
DISTRICT SUPERVISOR

*See Instructions On Reverse Side

Post ID 1
5-11-82
New Doc # 1121

**N MEXICO OIL CONSERVATION COMMISSION
WELL LOCATION AND ACREAGE DEDICATION PLAT**

Form C-102
Supersedes C-128
Effective 1-1-65

All distances must be from the outer boundaries of the Section

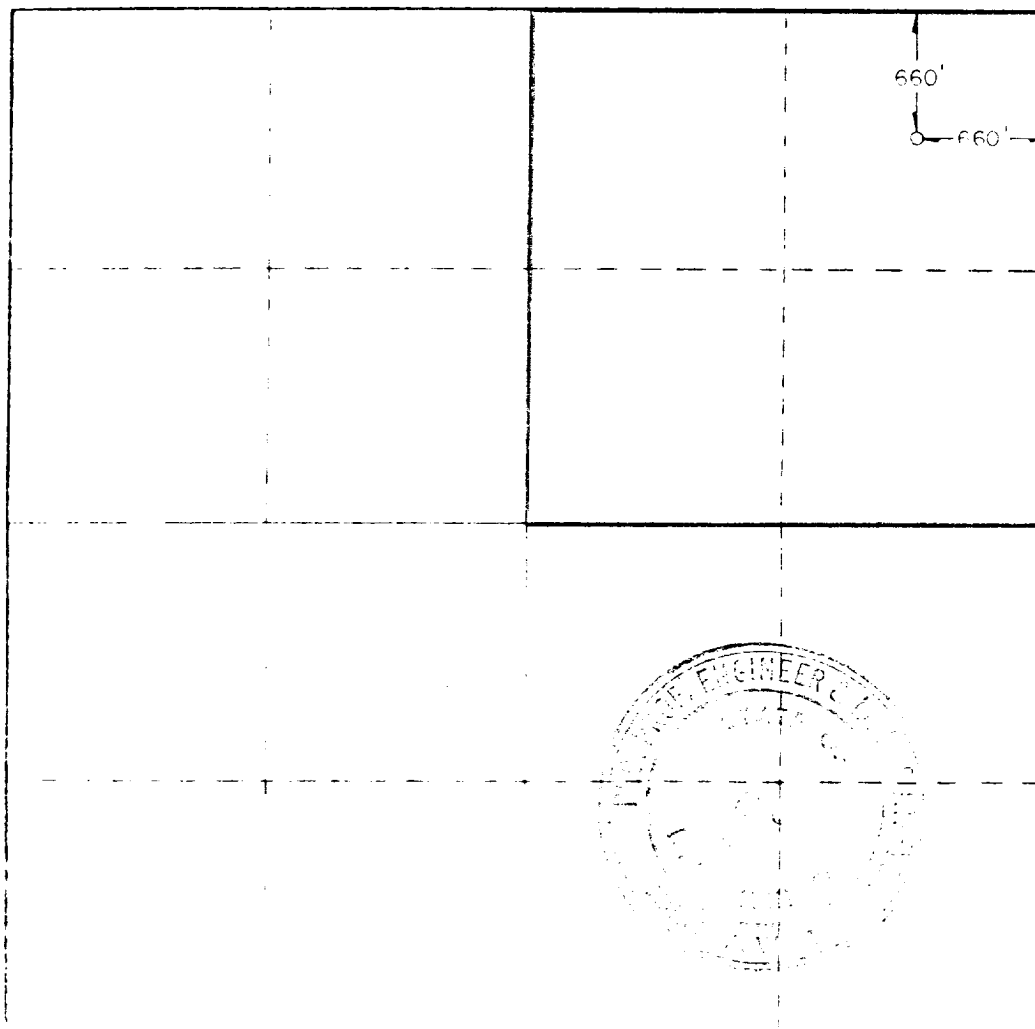
Operator Stevens Operating Company			Lease Sun Federal		Well No. 4
Tract Letter A	Section 28	Township 7 South	Range 26 East	County Chaves	
Actual Footage Location of Well: <div style="display: flex; justify-content: space-between; align-items: center;"> 660 feet from the north line and 660 feet from the east line </div>					
Ground Level Elev. 3753.2	Producing Formation Wildcat Abo		Pool Und. Abo		Dedicated Acreage 160 Acres

- 1 Outline the acreage dedicated to the subject well by colored pencil or hatchure marks on the plat below.
- 2 If more than one lease is dedicated to the well, outline each and identify the ownership thereof (both as to working interest and royalty).
- 3 If more than one lease of different ownership is dedicated to the well, have the interests of all owners been consolidated by communitization, unitization, force-pooling, etc?

☐ Yes ☐ No If answer is "yes," type of consolidation _____

If answer is "no," list the owners and tract descriptions which have actually been consolidated. (Use reverse side of this form if necessary.) _____

No allowable will be assigned to the well until all interests have been consolidated (by communitization, unitization, forced-pooling, or otherwise) or until a non-standard unit, eliminating such interests, has been approved by the Commission.



CERTIFICATION

I hereby certify that the information contained herein is true and complete to the best of my knowledge and belief.

Pat Thompson
Name

Pat Thompson
Position

Production Coordinator

Stevens Oil Company
Company

May 3, 1982
Date

I hereby certify that the well location shown on this plat was plotted from field notes of actual surveys made by me or under my supervision, and that the same is true and correct to the best of my knowledge and belief.

5-1-82
Date Surveyed

Registered Professional Engineer and/or Land Surveyor

John W. West
Certificate No. **JOHN W. WEST 876**
PATRICK A. ROMERO 8883
Ronald J. Edgson 3239

SUPPLEMENTAL DRILLING DATA

STEVENS OPERATING CORPORATION
WELL #4 SUN FEDERAL
660' FNL & 660' FEL, SEC. 28, T7S, R26E
CHAVES COUNTY, NEW MEXICO

1. SURFACE INFORMATION: Permian (Artesia Group).

2. ESTIMATED TOPS OF GEOLOGIC MARKERS:

Queen	150'	Glorietta	1800'
San Andres	600'	Abo	3850'

3. ANTICIPATED POROSITY ZONES:

Water	60'
Oil	1100'
Gas	3950'

4. CASING DESIGN:

<u>Size</u>	<u>Interval</u>	<u>Weight</u>	<u>Grade</u>	<u>Joint</u>	<u>Condition</u>
8 5/8"	0 - 900'	24.0#	K-55	STC	New
4½"	0 - 4300'	9.5#	L-55	STC	New

5. SURFACE CONTROL EQUIPMENT: A double ram-type preventer (900 series).
A sketch of BOP stack is attached.

6. CIRCULATING MEDIUM:

0 - 900'	Fresh water mud with gel added if needed for viscosity
900 - TD	Salt water mud, conditioned as necessary for control of viscosity and water loss.

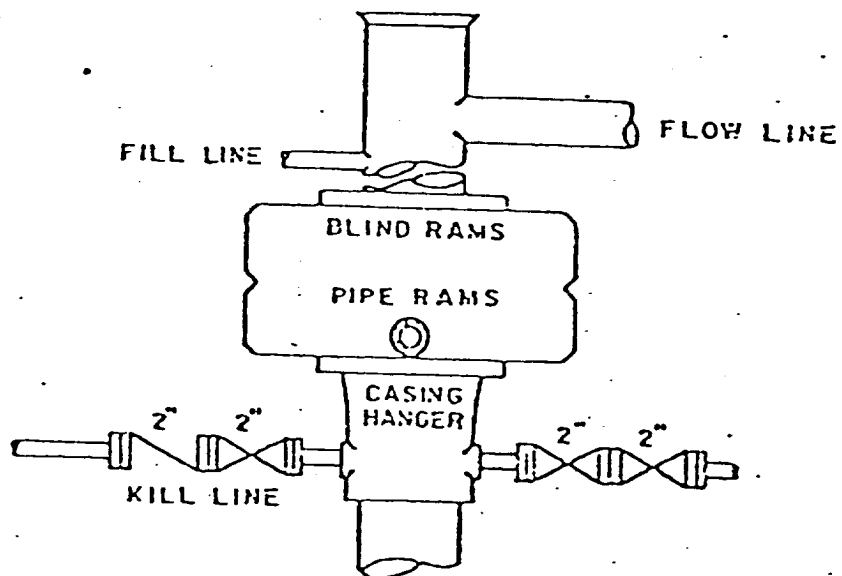
7. AUXILIARY EQUIPMENT: Drill string safety valve.

8. TESTING, LOGGING AND CORING PROGRAMS:

DST's:	As warranted.
Coring:	None Planned.
Logging:	A compensated Neutron/Formation Density Log w/Gamma Ray and a Dual Lateralog/Micro-Spherically Focused Log.

9. ABNORMAL PRESSURES, TEMPERATURES OR GASES: None anticipated.

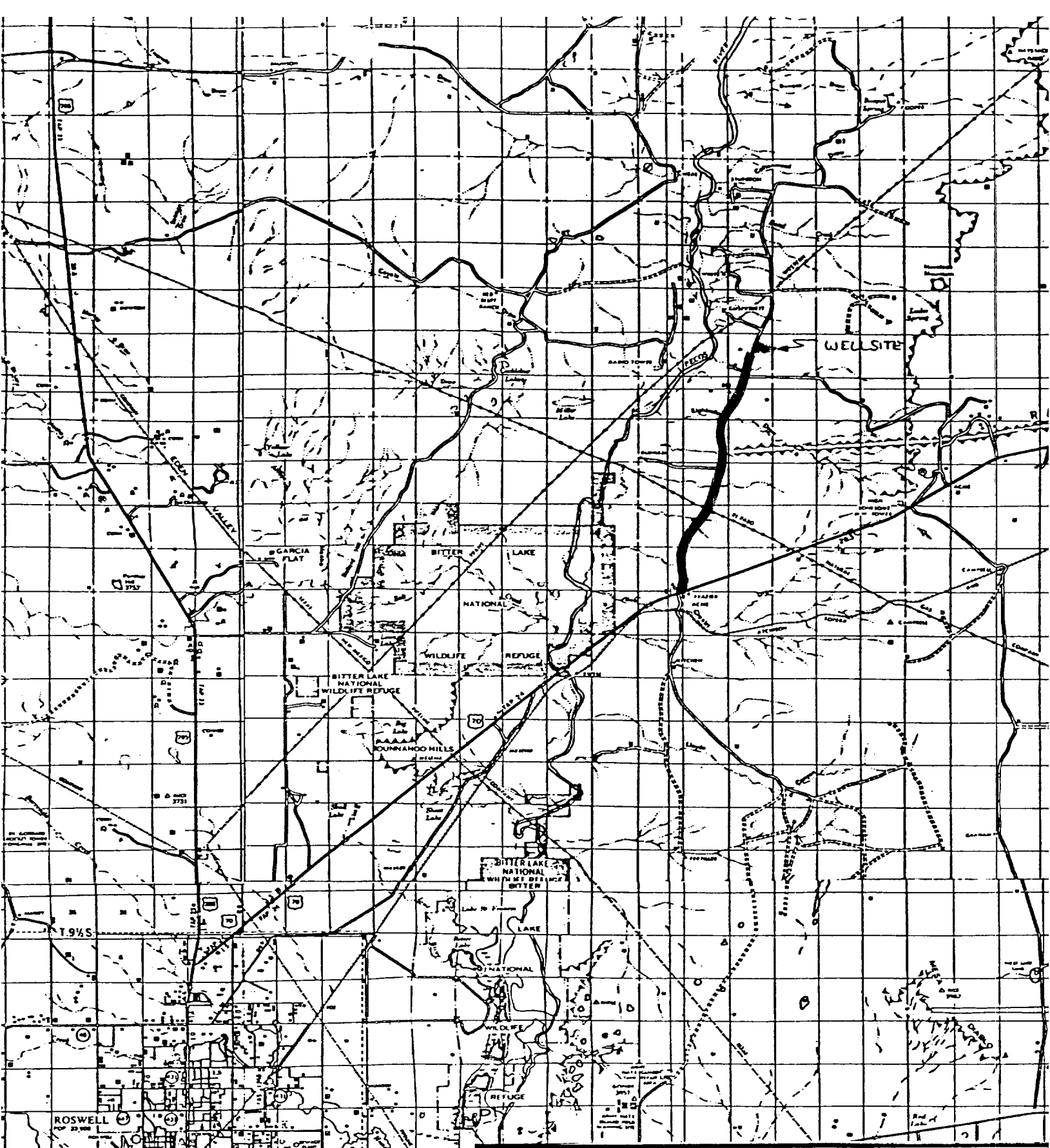
10. ANTICIPATED DATES: It is planned that drilling operations will commence about May 20, 1982. Duration of drilling and completion operations should be 20 to 60 days.



DUAL RAM-TYPE PREVENTER



900 Series

Blowout Preventer Sketch
 Stevens Operating Corporation
 Well 4 Sun Federal
 660' FNL & 660' FEL, Sec. 28, T7S, R26E



SUPPLEMENTAL EXHIBIT " A "

COUNTY ROAD MAP

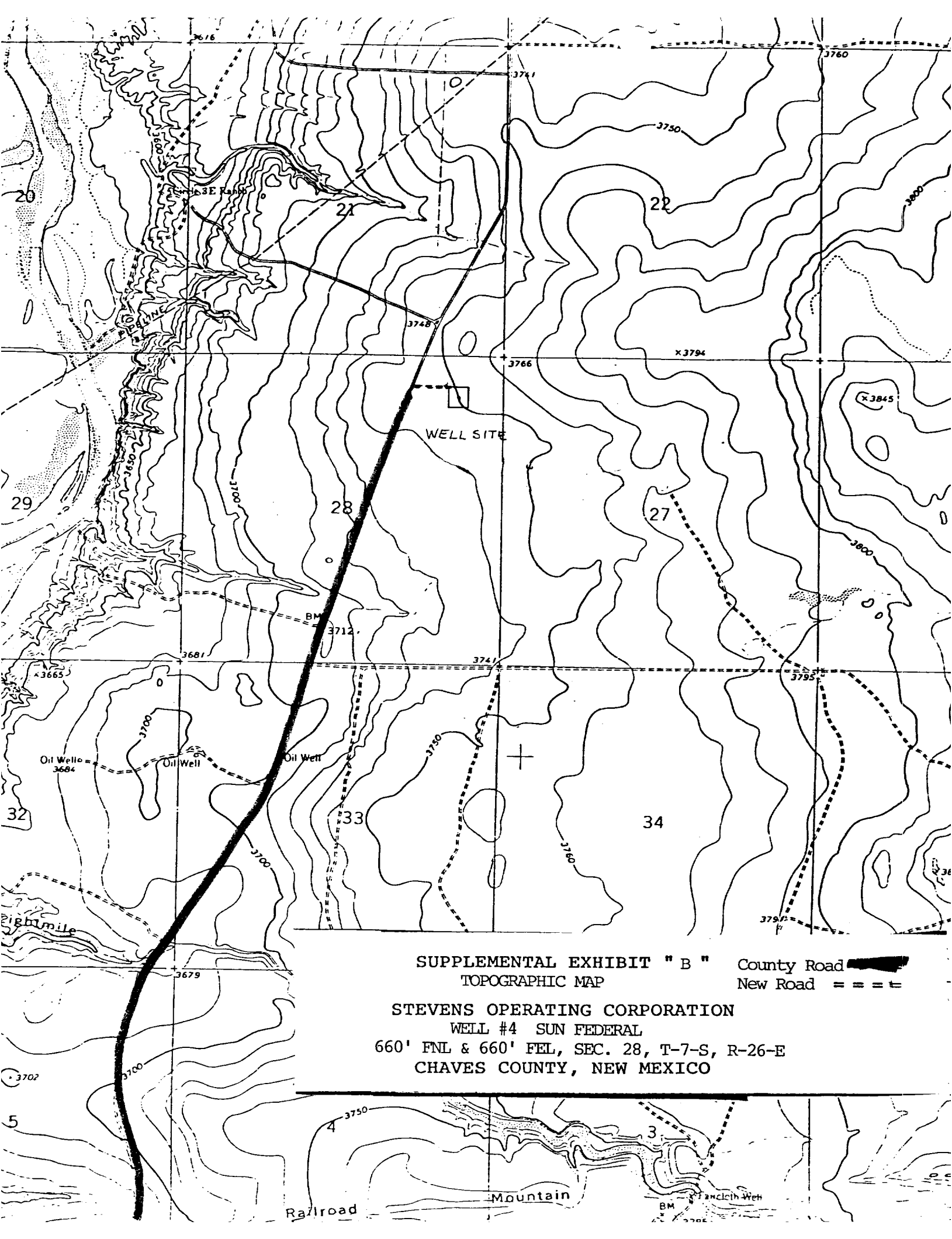
County Road 
New Road 

STEVENS OPERATING CORPORATION


WELL #4 SUN FEDERAL

660' FNL & 660' FEL, SEC. 28, T-7-S, R-26-E

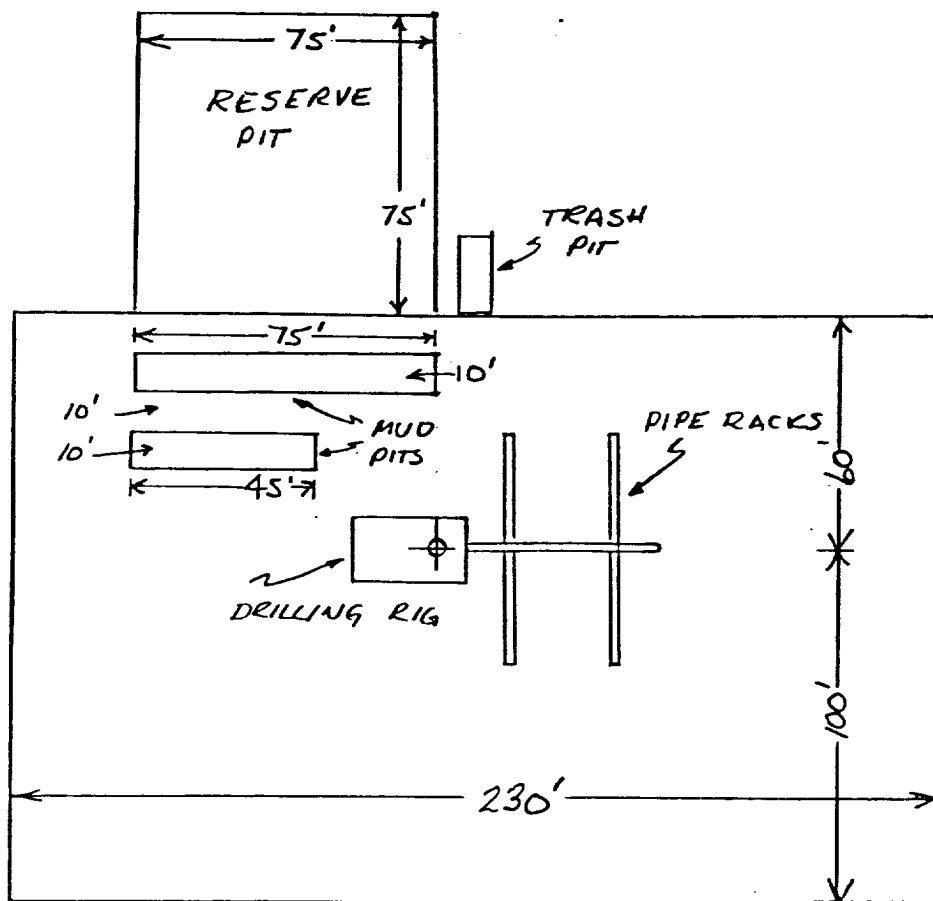
CHAVES COUNTY, NEW MEXICO



SUPPLEMENTAL EXHIBIT " B "
TOPOGRAPHIC MAP

County Road 
New Road == == ==

STEVENS OPERATING CORPORATION
WELL #4 SUN FEDERAL
660' FNL & 660' FEL, SEC. 28, T-7-S, R-26-E
CHAVES COUNTY, NEW MEXICO



SUPPLEMENTAL EXHIBIT " D "

SKETCH OF WELL PAD

STEVENS OPERATING CORPORATION

WELL #4 SUN FEDERAL

660' FNL & 660' FEL, SEC 28, T-7-S, R-26-E.

CHAVES COUNTY, NEW MEXICO