

Form 3160-3
(November 1983)
(formerly 9-331C)

NM Oil Cons. Commission
Drawer DD
Artesia, NM 88210

SUBMIT IN TRII ATE*
(Other instructions on
reverse side)

Form approved.
Budget Bureau No. 1004-0136
Expires August 31, 1985

UNITED STATES
DEPARTMENT OF THE INTERIOR
BUREAU OF LAND MANAGEMENT

APPLICATION FOR PERMIT TO DRILL, DEEPEN, OR PLUG BACK

1a. TYPE OF WORK DRILL ☒ DEEPEN ☐ PLUG BACK ☐

b. TYPE OF WELL OIL WELL ☐ GAS WELL ☒ OTHER ☐ SINGLE ZONE ☐ MULTIPLE ZONE ☐

2. NAME OF OPERATOR McClellan Oil Corporation

3. ADDRESS OF OPERATOR

P.O. Drawer 730, Roswell, New Mexico 88202

4. LOCATION OF WELL (Report location clearly and in accordance with any State requirements.)
At surface 1528' FSL & 660' FEL, NE/4 SE/4, Unit letter I O.C.D.

At proposed prod. zone Same

14. DISTANCE IN MILES AND DIRECTION FROM NEAREST TOWN OR POST OFFICE*

20 miles Northeast of Roswell, N.M.

15. DISTANCE FROM PROPOSED*

LOCATION TO NEAREST
PROPERTY OR LEASE LINE, FT.
(Also to nearest drlg. unit line, if any)

660'

18. DISTANCE FROM PROPOSED LOCATION*
TO NEAREST WELL, DRILLING, COMPLETED,
OR APPLIED FOR, ON THIS LEASE, FT.

N/A

21. ELEVATIONS (Show whether DF, RT, GR, etc.)

3598' GR

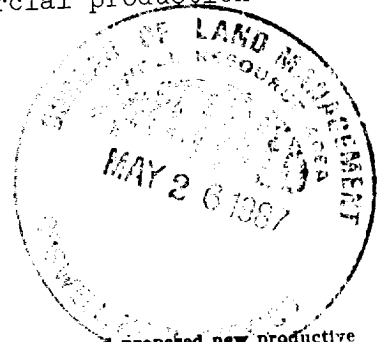
23. PROPOSED CASING AND CEMENTING PROGRAM

SIZE OF HOLE	SIZE OF CASING	WEIGHT PER FOOT	SETTING DEPTH	QUANTITY OF CEMENT
12 1/4"	8 5/8"	24.0#	950'	Circulate to Surface
7 7/8"	4 1/2"	10.5#	4000'	Sufficient to isolate all oil, gas and water zones.

Propose to drill to the Abo formation to test for possible commercial production
of gas.

Gas is dedicated.

Post ID-1
NL,
6-12-87



IN ABOVE SPACE DESCRIBE PROPOSED PROGRAM: If proposal is to deepen or plug back, give data on present productive zone and proposed new productive zone. If proposal is to drill or deepen directionally, give pertinent data on subsurface locations and measured and true vertical depths. Give blowout preventer program, if any.

24. SIGNED Henry W. Franklin TITLE Agent DATE 5/24/87

(This space for Federal or State office use)

PERMIT NO. _____

APPROVAL DATE _____

APPROVED BY _____

S/Homer Meyer, Acting

TITLE _____

Area Manager

DATE _____

JUN 2 1987

CONDITIONS OF APPROVAL, IF ANY:

APPROVAL OF THIS APPLICATION DOES NOT WARRANT OR
CERTIFY THAT THE APPLICANT HOLDS LEGAL OR EQUITABLE
TITLE TO THOSE RIGHTS IN THE SUBJECT LEASE WHICH WOULD
ENTITLE THE APPLICANT TO CONDUCT OPERATIONS THEREON

*See Instructions On Reverse Side

Title 18 U.S.C. Section 1001, makes it a crime for any person knowingly and willfully to make to any department or agency of the
United States or fraudulent statements or representations as to any matter within its jurisdiction.

All distances must be from the outer boundaries of the Section.

Operator McClellan Oil Corp.		Lease Coyote Federal		Well No. # 5
Unit Letter I	Section 12	Township 8 South	Range 24 East	County Chaves
Actual Postage Location of Well: 1528 feet from the South line and 660 feet from the East line				
Ground Level Elev. 3598	Producing Formation Abo		Pool Pecos Slope-Abo	Dedicated Acreage: 160 Acres

- Outline the acreage dedicated to the subject well by colored pencil or machine marks on the plat below.
- If more than one lease is dedicated to the well, outline each and identify the ownership thereof (both as to working interest and royalty).
- If more than one lease of different ownership is dedicated to the well, have the interests of all owners been consolidated by communitization, unitization, force-pooling, etc?

☐ Yes ☐ No If answer is "yes," type of consolidation _____

If answer is "no," list the owners and tract descriptions which have actually been consolidated. (Use reverse side of this form if necessary.) _____

No allowable will be assigned to the well until all interests have been consolidated (by communitization, unitization, forced-pooling, or otherwise) or until a non-standard unit, eliminating such interests, has been approved by the Division.

Sec.12, T.8 S., R.24 E., N.M.P.M.

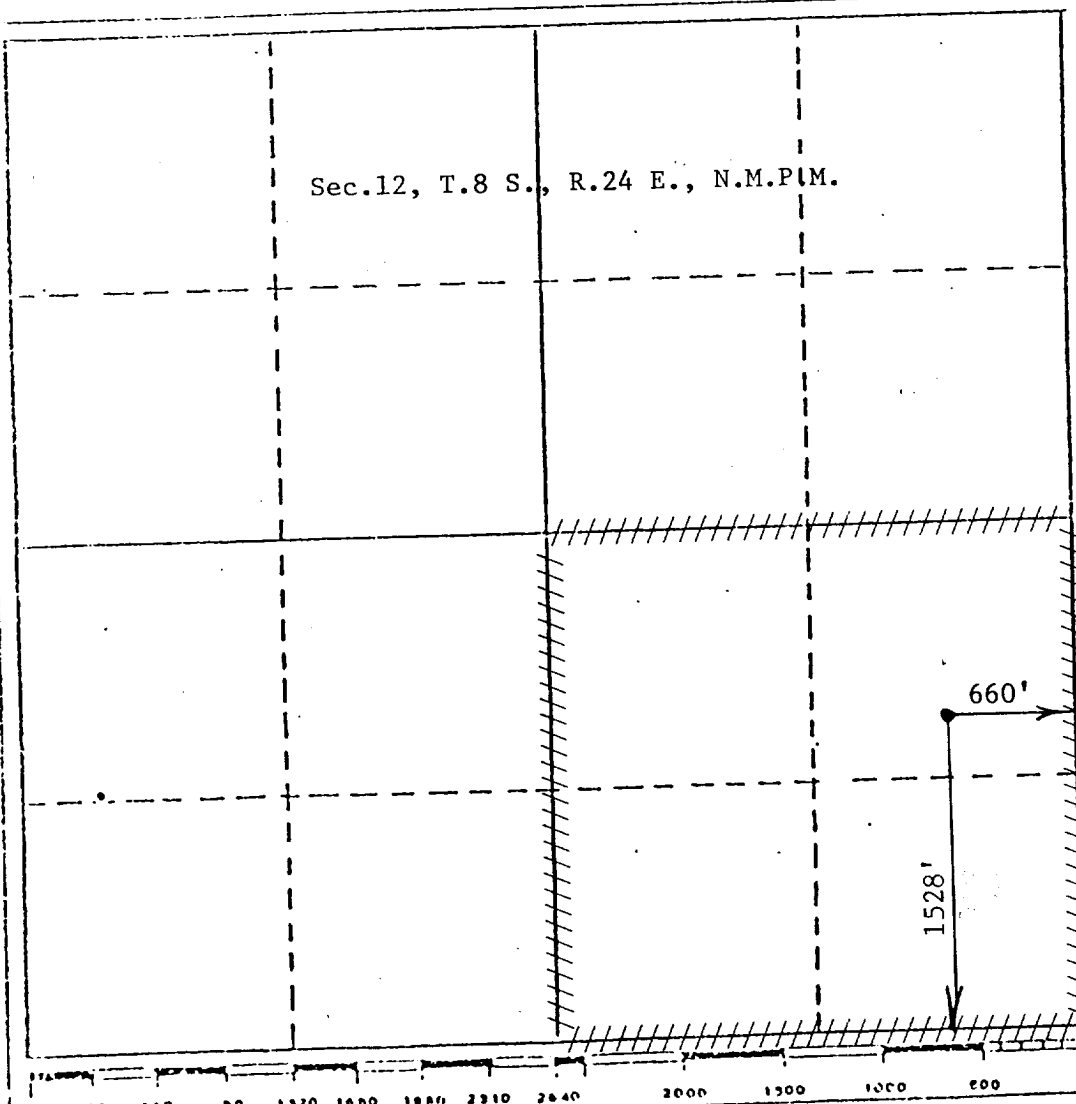
CERTIFICATION

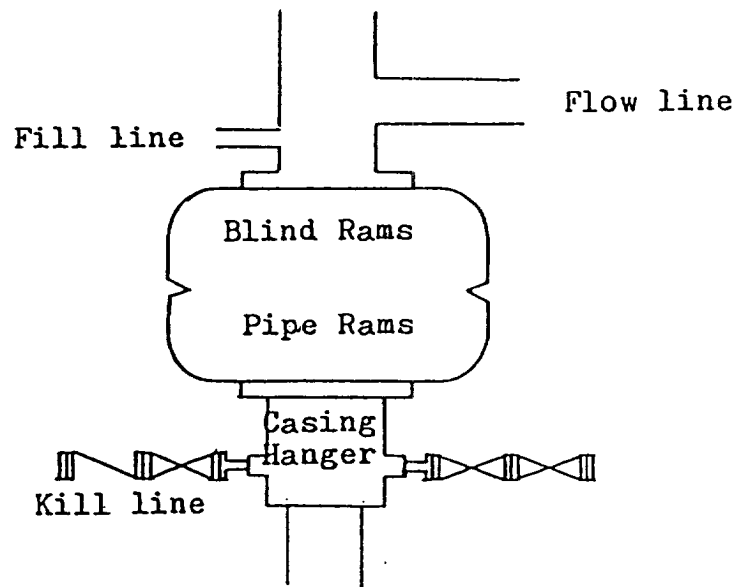
I hereby certify that the information contained herein is true and complete to the best of my knowledge and belief.

Name
Terry W. Franklin
Position
Agent
Company
McClellan Oil Corporation
Date
5/24/87

I hereby certify that the well location shown on this plat was plotted from field notes of actual surveys made by me or under my supervision, and that the same is true and correct to the best of my knowledge and belief.

JOHN D. JAQUES
Date Surveyed
April 22, 1982
Registered Professional Engineer
and/or Land Surveyor
John D. Jaques P.E. & L.S.
Certificate No.
6290





Blowout Preventer
3000 psi working pressure

SUPPLEMENTAL DRILLING DATA
McClellan Oil Corporation
Coyote Federal No. 5
1750' FSL & 660' FEL
Sec. 12, T8S, R24E
Chaves County, N.M.
NM-16069

1. Geologic Name of Surface Formation: Permian Artesian Group.
2. Estimated Geological Marker Tops:

San Andres	200'	Tubb	2620'
Glorietta	1150'	Abo	3320'
3. Estimated Depths to Oil, Water or Gas: Gas possible from 3320-4000'.
4. Proposed Casing and Cement Programs:
 - 0-950' - Set approximately 950' of 8 5/8, 23.0#, J-55, ST&C casing, and cement to surface with 600 sx Class 'C' cement.
 - 0-T.D. - Set to total depth 4 1/2", 10.5#, J-55, ST&C casing, and cement to isolate all oil, gas and water zones.
5. Proposed Mud Program:
 - 0-950' - Native mud
 - 950-T/Abo - Native mud
 - T/Abo - T.D. - mud up with salt gel mud, 40 viscosity, 15cc water loss, 10.0# gal.(T/Abo approximately 3320')
6. Testing, Logging, and Coring Programs:
 - Testing: None
 - Logging: CNL-FDC, gamma ray, DLL-MSFL
 - Coring : None
7. Blowout Preventers: 10", 3000 psi Schaeffer Double Ram.
8. Abnormal Pressures or Temperature Zones: None.
9. Anticipated Starting Date: Commence drilling operations May 16, 1987.

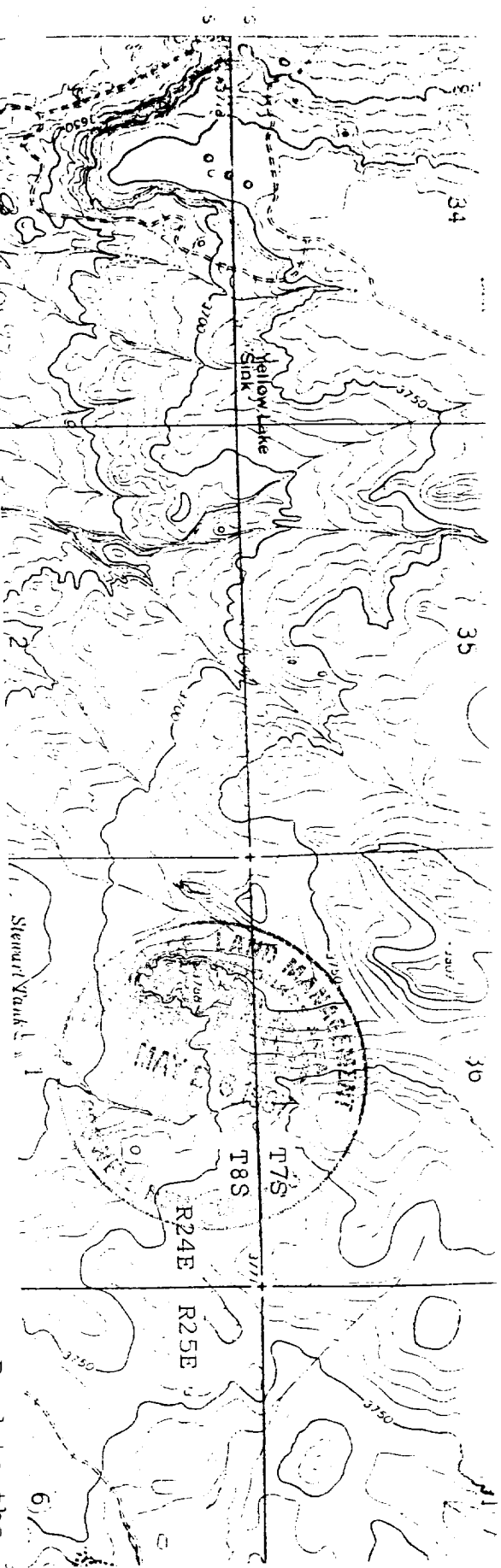
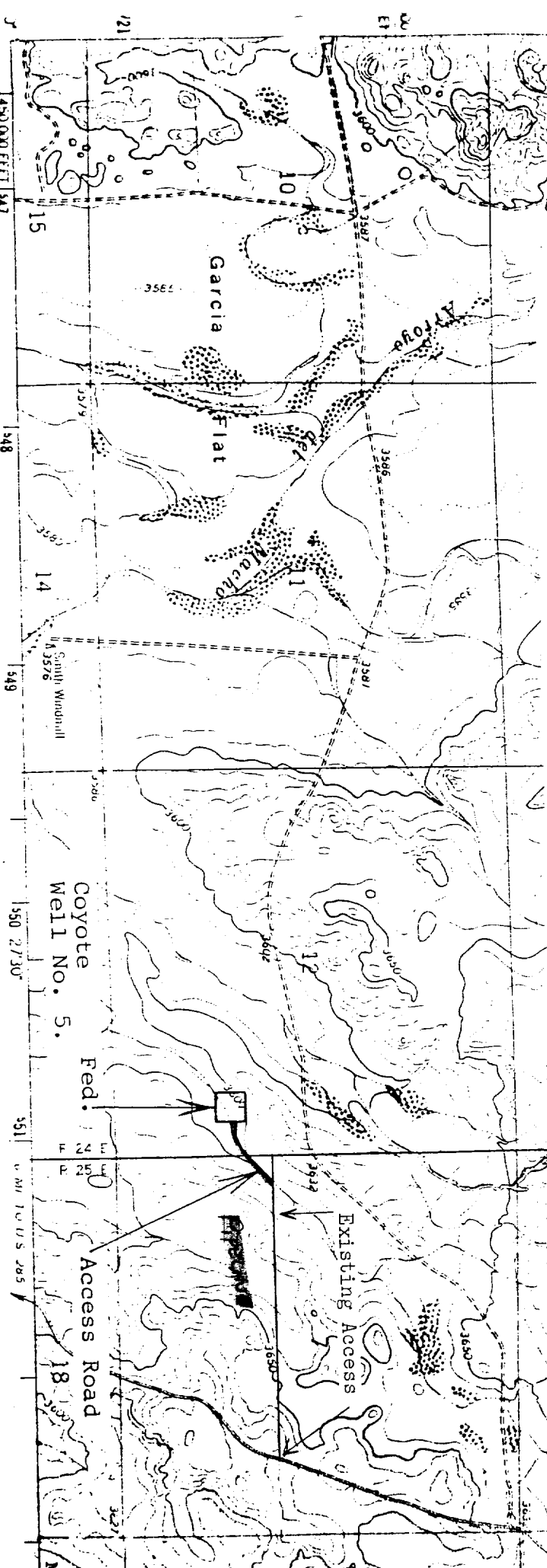


EXHIBIT 'B'
 McClellan Oil Corporation
 Coyote Federal No. 5
 NE/4 SE/4, Sec. 12-8S-24E
 Chaves County, N.M.

Map showing the location of the McClellan Oil Corporation Access Road to the Coyote Federal Well No. 5. T8S, R24E, Section 12: SE/4NE/4SE/4. T8S, R25E, Section 7: SW/4NW/4SW/4; NW/4NW/4SW/4. Chaves County, New Mexico. Square shows location of well pad; solid line shows location of access road. U.S.G.S. 7.5 minute series, COYOTE DRAW, N.M., 1963. ASC project: 87-158.



Mapped, edited, and published by the Geological Survey
 Control by USGS and USC&GS



SCALE 1:24 000

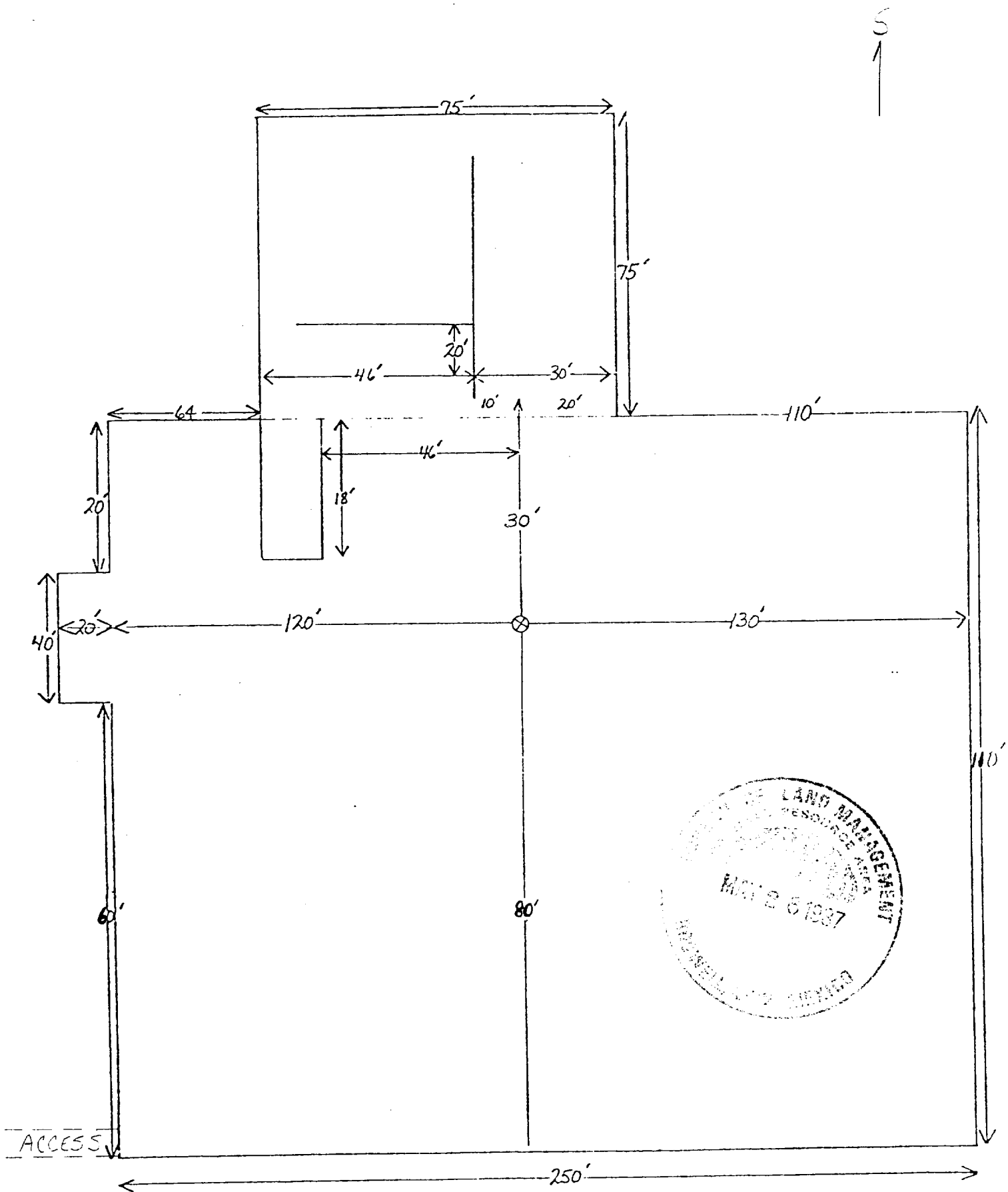


EXHIBIT 'D'
 McClellan Oil Corporation
 Coyote Federal No. 5
 NE/4 SE/4, Sec. 12-8S-24E
 Chaves County, N.M.