

All distances must be from the outer boundaries of the Section.

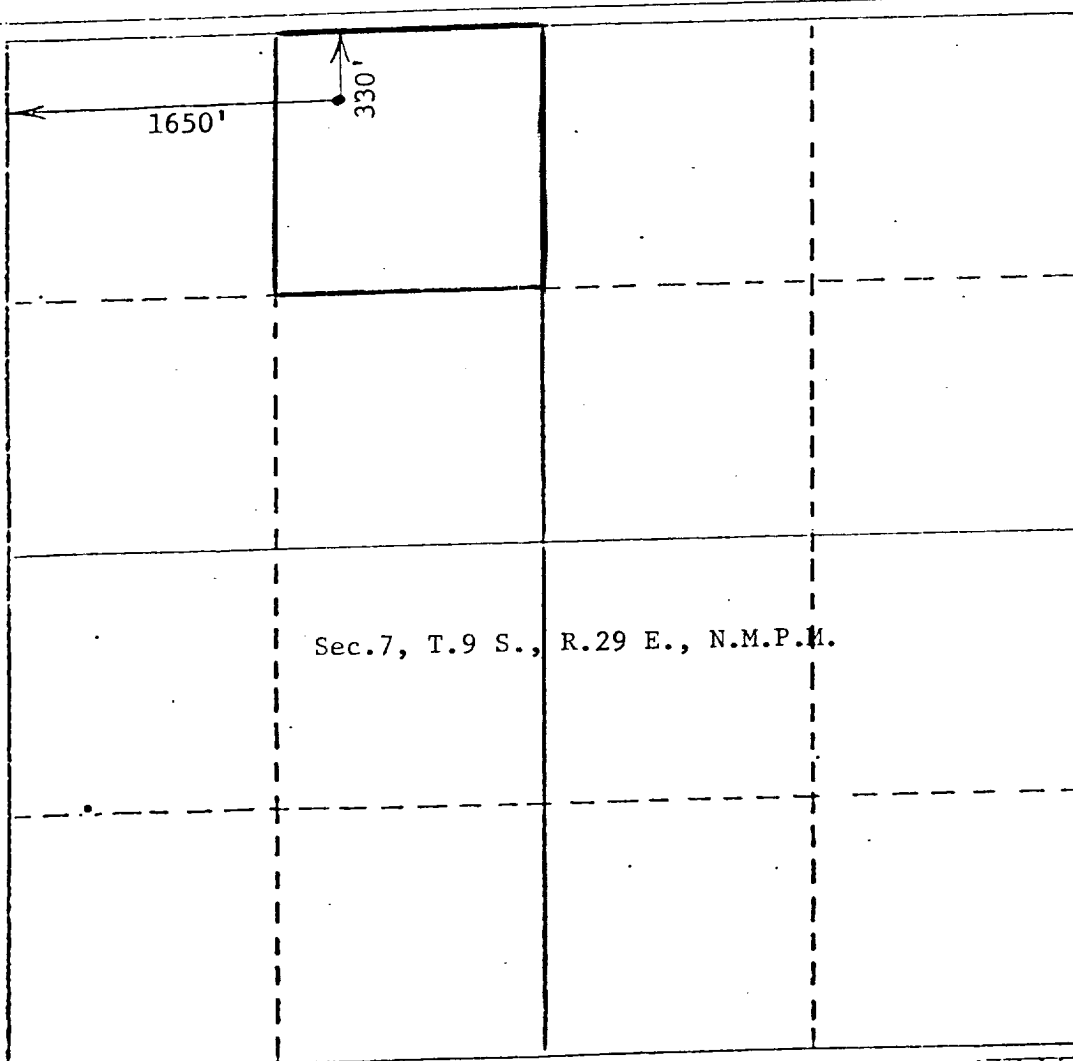
Operator <i>Santa Rita Expl. Corp.</i> Collier Energy		Lease Moonshine 7		MAY 18 1982		Well No. #12	
Unit Letter C	Section 7	Township 9 South	Range 29 East	County O. C. D. Chaves AGASSA, OFFICE			
Actual Postage Location of Well: 330 feet from the North line and 1650 feet from the West line							
Ground Level Elev. 3929	Producing Formation San Andres		Pool Twin Lakes-SA Assoc.		Dedicated Acreage: 40 Acres		

1. Outline the acreage dedicated to the subject well by colored pencil or hatchure marks on the plat below.
2. If more than one lease is dedicated to the well, outline each and identify the ownership thereof (both as to working interest and royalty).
3. If more than one lease of different ownership is dedicated to the well, have the interests of all owners been consolidated by communitization, unitization, force-pooling, etc?

☐ Yes ☐ No If answer is "yes," type of consolidation _____

If answer is "no," list the owners and tract descriptions which have actually been consolidated. (Use reverse side of this form if necessary.) _____

No allowable will be assigned to the well until all interests have been consolidated (by communitization, unitization, forced-pooling, or otherwise) or until a non-standard unit, eliminating such interests, has been approved by the Division.



CERTIFICATION

I hereby certify that the information contained herein is true and complete to the best of my knowledge and belief.

Name

Position

Agent

Company

Santa Rita Exploration Corp.

Date

May 17, 1982

I hereby certify that the well location shown on this plat was plotted from field notes of actual surveys made by me or under my supervision, and that the same is true and correct to the best of my knowledge and belief.

Date Surveyed

May 17, 1982

Registered Professional Engineer and/or Surveyor

John D. Jacques, P.E. & L.S.

Certificate No.

6290