

NM OIL CONSERVATION  
Drawn DD  
Artesia, NM 88210SUBMIT IN DUPLICATE  
RECEIVED  
Instructions on  
reverse sideForm approved.  
Budget Bureau No. 42-R1425.UNITED STATES  
DEPARTMENT OF THE INTERIOR  
GEOLOGICAL SURVEY

MAY 21 1982

30-005-61605

## APPLICATION FOR PERMIT TO DRILL, DEEPEN OR PLUG BACK

## 1a. TYPE OF WORK

DRILL ☒DEEPEN ☐ARTESIA ☐ PLUG BACK ☐

## b. TYPE OF WELL

OIL  
WELL ☐GAS  
WELL ☒OTHER ☐SINGLE  
ZONE ☒MULTIPLE  
ZONE ☐

## 2. NAME OF OPERATOR

MESA PETROLEUM CO. ✓

## 3. ADDRESS OF OPERATOR

1000 VAUGHN BUILDING/MIDLAND, TEXAS 79701-4493

## 4. LOCATION OF WELL (Report location clearly and in accordance with any State requirements.)\*

At surface 1322' FSL &amp; 2080' FEL

At proposed prod. zone SAME

## 14. DISTANCE IN MILES AND DIRECTION FROM NEAREST TOWN OR POST OFFICE\*

25 miles North of Roswell

## 10. DISTANCE FROM PROPOSED\*

LOCATION TO NEAREST

PROPERTY OR LEASE LINE, FT.

(Also to nearest drlg. unit line, if any) 5000' / 1318'

## 18. DISTANCE FROM PROPOSED LOCATION\*

TO NEAREST WELL, DRILLING, COMPLETED,

OR APPLIED FOR, ON THIS LEASE, FT. 1980'

## 16. NO. OF ACRES IN LEASE

2459.68

## 19. PROPOSED DEPTH

3400'

17. NO. OF ACRES ASSIGNED  
TO THIS WELL

160

## 20. ROTARY OR CABLE TOOLS

ROTARY

## 21. ELEVATIONS (Show whether DF, RT, GR, etc.)

4104' GR

## 22. APPROX. DATE WORK WILL START\*

JUNE 1, 1982

## 23.

## PROPOSED CASING AND CEMENTING PROGRAM

SIZE OF HOLE	SIZE OF CASING	WEIGHT PER FOOT	SETTING DEPTH	QUANTITY OF CEMENT
12 1/4"	8 5/8"	24#	1200'	700/300 SURFACE
7 7/8"	4 1/2"	10.5#	3400'	300 COVER ALL PAY

Propose to drill 12 1/4" hole to approximately 1200' to set 8 5/8" surface casing and cement to surface. Will nipple up ram type BOP's and reduce hole to 7 7/8" to drill to total depth. Drilling medium will be air, foam, or mud as required. After log evaluation, 4 1/2" casing may be run and cemented with sufficient sands and amounts to isolate and seal off any fresh water, oil or gas zones encountered.

Operator's Gas Sales are dedicated.

RECEIVED  
MAY 03 1982  
OIL & GAS  
U.S. GEOLOGICAL SURVEY  
ROSWELL, NEW MEXICOPasted  
NLB + ID-I  
5-25-82

XC: MMS (7), TLS, CEN RCDS, ACCTG, MEC, LAND, ROSWELL, REM, FILE, (PARTNERS )

IN ABOVE SPACE DESCRIBE PROPOSED PROGRAM: If proposal is to deepen or plug back, give data on present productive zone and proposed new productive zone. If proposal is to drill or deepen directionally, give pertinent data on subsurface locations and measured and true vertical depths. Give blowout preventer program, if any.

24.

SIGNED

R. P. Mauch

TITLE

REGULATORY COORDINATOR

DATE

4-28-82

(This space for Federal or State office use)

(Orig. Sgd.) GEORGE H. STEWART

PERMIT NO.

APPROVAL DATE

APPROVED BY

CONDITIONS OF APPROVAL, IF ANY:

JAMES A. GILMAN  
DISTRICT SUPERVISOR

TITLE

MSL-152 XL

DATE

\*See Instructions On Reverse Side

All distances must be from the outer boundaries of the Section.

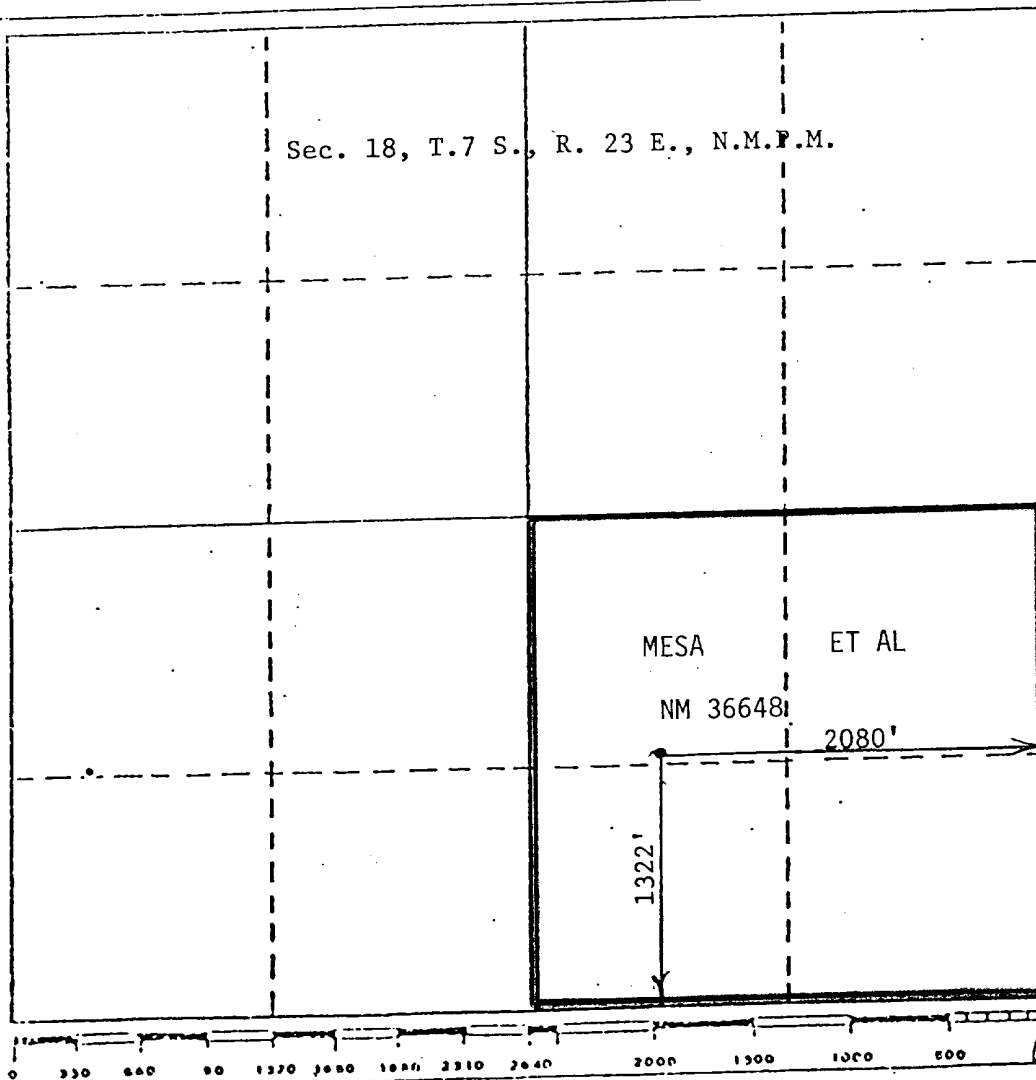
Operator <b>Mesa Petroleum Co.</b>			Lease <b>China Federal</b>		Well No. <b>#5</b>
Unit Letter <b>J</b>	Section <b>18</b>	Township <b>7 South</b>	Range <b>23 East</b>	County <b>Chaves</b>	
Actual Postage Location of Well: <b>1322</b> feet from the <b>South</b> line and <b>2080</b> feet from the <b>East</b> line					
Ground Level Elev. <b>4104</b>	Producing Formation <b>ABO</b>	Pool <b>UNDESIGNATED</b>		Dedicated Acreage: <b>SE/4 160</b> Acres	

1. Outline the acreage dedicated to the subject well by colored pencil or hatchure marks on the plat below.
2. If more than one lease is dedicated to the well, outline each and identify the ownership thereof (both as to working interest and royalty).
3. If more than one lease of different ownership is dedicated to the well, have the interests of all owners been consolidated by communitization, unitization, force-pooling, etc?

☐ Yes ☐ No If answer is "yes," type of consolidation \_\_\_\_\_

If answer is "no," list the owners and tract descriptions which have actually been consolidated. (Use reverse side of this form if necessary.) \_\_\_\_\_

No allowable will be assigned to the well until all interests have been consolidated (by communitization, unitization, forced-pooling, or otherwise) or until a non-standard unit, eliminating such interests, has been approved by the Division.



CERTIFICATION

I hereby certify that the information contained herein is true and complete to the best of my knowledge and belief.

*R. E. Mathis*

Name  
**R. E. MATHIS**  
Position  
**REGULATORY COORDINATOR**  
Company  
**MESA PETROLEUM CO.**  
Date  
**APRIL 28, 1982**

I hereby certify that the well location shown on this plat was plotted from field notes of actual surveys made by me or under my supervision, and that the same is true and correct to the best of my knowledge and belief.

**JOHN D. JAQUES**  
NEW MEXICO  
Professional Engineer  
and/or Professional Surveyor  
Date Surveyed  
**April 26, 1982**  
**John D. Jaques, P.E. & L.S.**  
Certificate No.  
**6290**

APPLICATION FOR PERMIT TO DRILL

MESA PETROLEUM CO.  
CHINA FEDERAL #5  
1322' FSL & 2080' FEL, SEC 18, T7S, R23E  
CHAVES COUNTY, NEW MEXICO

LEASE NO. NM-36648

In conjunction with Form 9331-C, Application For Permit to Drill subject well, the following additional information is provided:

1. Applicable portions of the GENERAL REQUIREMENTS FOR OIL AND GAS OPERATIONS ON FEDERAL LEASES, Roswell District, Geological Survey of September 1, 1980 will be adhered to.

2. Geological markers are estimated as follows:

SEVEN RIVERS	Surface
SAN ANDRES	
GLORIETA	584
TUBB	2134
ABO	2875

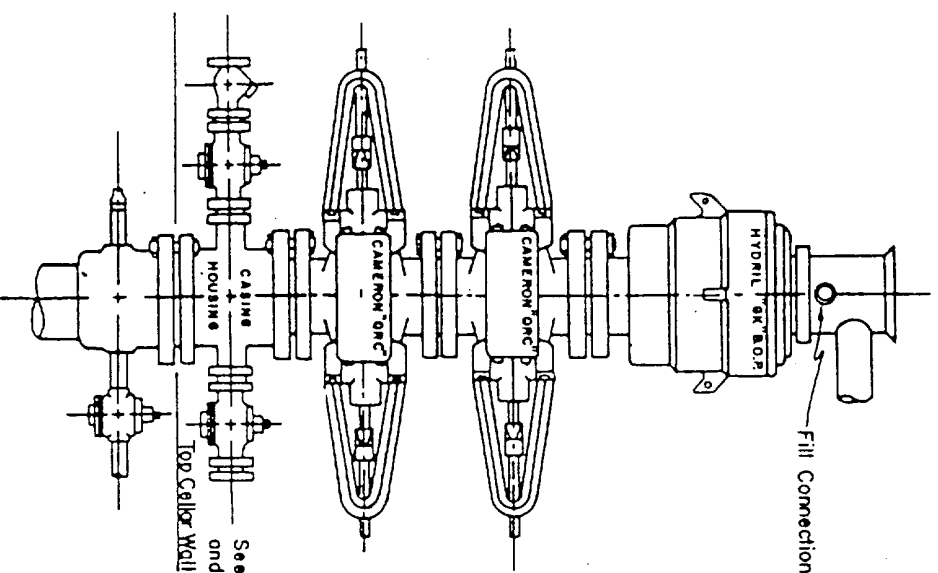
3. Hydrocarbon bearing strata may occur in the Abo formation(s). No fresh water is expected to be encountered below

4. The Casing and Blowout Preventer Program will be determined by hole conditions as encountered. See Exhibit VI. Anticipate drilling with air or foam using ram type preventer and rotating head for well control. The 8 5/8" casing will be set at approximately 1200' to protect any fresh water zones and cemented to the surface. The 4 1/2" production casing will be set at total depth or shallower depending upon the depth of the deepest commercial hydrocarbon bearing strata encountered. Sufficient amounts and kinds of cement would be used to ensure any water, gas, or oil zones encountered are isolated and shut off down to the casing point if run.

5. No drill stem test or coring program is planned. The logging program may consist of a GR-CNL from surface total depth and FDC from casing point to total depth.

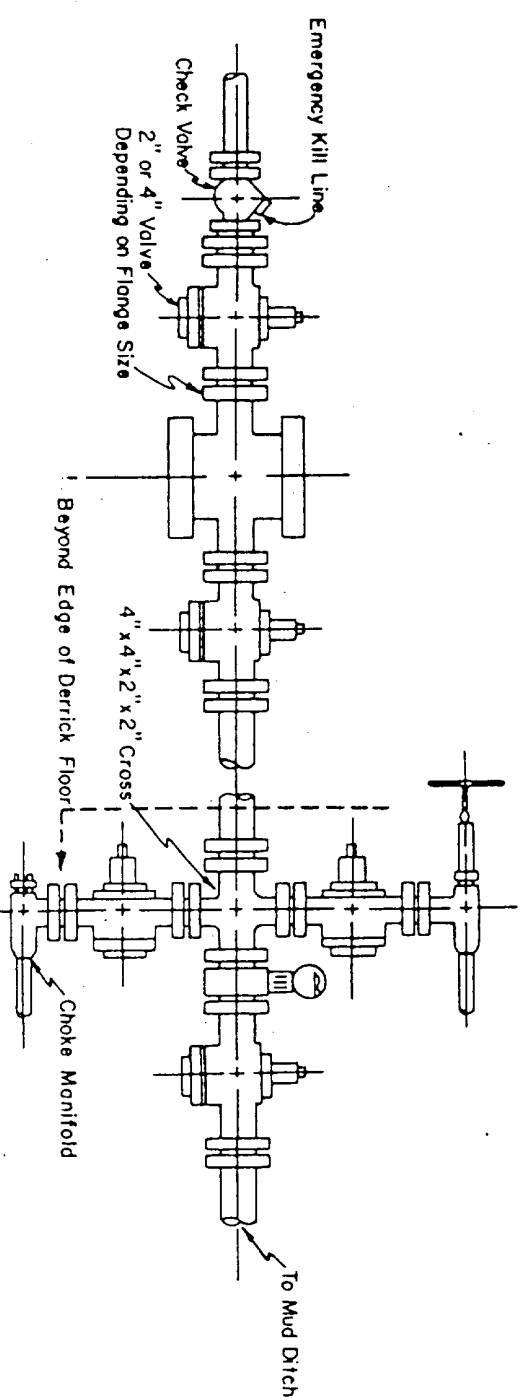
6. Anticipated drilling time is ten days with completion operations to follow as soon as a completion unit is available.

Blow-out Preventers hydril and choke manifold are all 900 Series



3,000 PSI WORKING PRESSURE  
BLOW-OUT PREVENTER HOOK-UP

See Detail of 4" Flow Line  
and Choke Assembly



3,000 PSI WORKING PRESSURE  
KILL, CHOKE, AND FILL CONNECTIONS

DETAIL OF 4" FLOW LINE CHOKE ASSEMBLY

Minimum assembly for 3,000 PSI working pressure will consist of three preventers.  
The bottom and middle preventers may be Cameron.

NOTE: HYDRIL not installed on shallow-low pressure wells.  
RAM type BOPs are API 10" X 3000 PSI



EXHIBIT VI

FOR PROPOSED CHINA FEDERAL #5

DATE: \_\_\_\_\_ SCALE: \_\_\_\_\_



STATE OF NEW MEXICO  
ENERGY AND MINERALS DEPARTMENT  
OIL CONSERVATION DIVISION

May 4, 1982

BRUCE KING  
GOVERNOR  
LARRY KEHOE  
SECRETARY

POST OFFICE BOX 2088  
STATE LAND OFFICE BUILDING  
SANTA FE, NEW MEXICO 87501  
(505) 827-2434

RECEIVED

MAY 12 1982

O. C. D.  
ARTESIA, OFFICE

Mesa Petroleum Co.  
Vaughn Building  
Suite 1000  
Midland, Texas 79701

Attention: R. E. Mathis

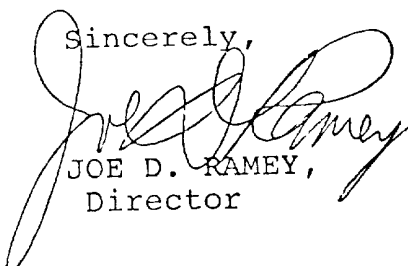
Administrative Order NSL-1524

Gentlemen:

Reference is made to your application for a non-standard location for your China Federal Well No. 5 to be located 1322 feet from the South line and 2080 feet from the East line of Section 18, Township 7 South, Range 23 East, NMPM, Abo Gas, Chaves County, New Mexico.

By authority granted me under the provisions of Rule 104 F of the Division Rules and Regulations, the above-described unorthodox location is hereby approved.

Sincerely,

  
JOE D. RAMEY,  
Director

JDR/RLS/dr

cc: Oil Conservation Division - Artesia  
Oil & Gas Engineering Committee - Hobbs  
Minerals Management Service - Artesia

