

UNITED STATES
DEPARTMENT OF THE INTERIOR
GEOLOGICAL SURVEY
NM OIL CONS. COMMISSION
Draper DD
Artesia, NM 88210

5. LEASE DESIGNATION AND SERIAL NO.

NM-18031

6. IF INDIAN, ALLOTTEE OR TRIBE NAME

7. UNIT AGREEMENT NAME

8. FARM OR LEASE NAME

Huckaby "TJ" Federal

9. WELL NO.

1

10. FIELD AND POOL, OR WILDCAT

Undes. Pecos Slope Abo

11. SEC., T., R., M., OR BLK.
AND SURVEY OR AREA

Sec. 18-T8S-R26E

12. COUNTY OR PARISH 13. STATE

Chaves

NM

APPLICATION FOR PERMIT TO DRILL, DEEPEN, OR PLUG BACK

1a. TYPE OF WORK

DRILL ☒DEEPEN ☐PLUG BACK ☐

b. TYPE OF WELL

OIL
WELL ☐GAS
WELL ☒

OTHER

SINGLE
ZONE ☐MULTIPLE
ZONE ☐

2. NAME OF OPERATOR

Yates Petroleum Corporation

3. ADDRESS OF OPERATOR

207 S. 4th Street, Artesia, New Mexico 88210

4. LOCATION OF WELL (Report location clearly and in accordance with any State requirements.)

At surface

1980' FSL & 660' FWL

At proposed prod. zone
same

14. DISTANCE IN MILES AND DIRECTION FROM NEAREST TOWN OR POST OFFICE*

16 miles EGE of Roswell, NM

OIL & GAS
U.S. GEOLOGICAL SURVEY

15. DISTANCE FROM PROPOSED*

LOCATION TO NEAREST
PROPERTY OR LEASE LINE, FT.
(Also to nearest drlg. unit line, if any)

660'

16. NO. OF ACRES IN LEASE

1920

17. NO. OF ACRES ASSIGNED
TO THIS WELL

160

18. DISTANCE FROM PROPOSED LOCATION*

TO NEAREST WELL, DRILLING, COMPLETED,
OR APPLIED FOR, ON THIS LEASE, FT.

19. PROPOSED DEPTH

4550'

20. ROTARY OR CABLE TOOLS

Rotary

21. ELEVATIONS (Show whether DF, RT, GR, etc.)

22. APPROX. DATE WORK WILL START*

ASAP

23.

PROPOSED CASING AND CEMENTING PROGRAM

SIZE OF HOLE	SIZE OF CASING	WEIGHT PER FOOT	SETTING DEPTH	QUANTITY OF CEMENT
14 3/4"	10 3/4"	48# J-55	935'	610 sx circulated
7 7/8"	4 1/2"	9.5#	TD	450 sx

We propose to drill and test the Abo and intermediate formations. Approximately 935' of surface casing will be set and cement circulated to shut off gravel and caving. If needed (lost circulation) 8 5/8" intermediate casing will be run to 1700' and cemented with enough cement calculated to tie back into the surface casing. Temperature survey will be run to determine cement top. If commercial, production casing will be run and cemented with adequate cover, perforate, and stimulate as needed for production.

MUD PROGRAM: FW gel & LCM 935', Brine to 3200', Brine and KCL water to TD.BOP PROGRAM: BOP's will be installed at the offset and tested daily.

GAS NOT DEDICATED.

IN ABOVE SPACE DESCRIBE PROPOSED PROGRAM: If proposal is to deepen or plug back, give data on present productive zone and proposed new productive zone. If proposal is to drill or deepen directionally, give pertinent data on subsurface locations and measured and true vertical depths. Give blowout preventer program, if any.

24.

SIGNED

TITLE Regulatory Coordinator

DATE

2/23/87

(This space for Federal or State office use)

PERMIT NO.

(Orig. 3-1) GEORGE H. STEWART

APPROVAL DATE

MAY 28 1982

APPROVED BY

TITLE

DATE

CONDITIONS OF APPROVAL, IF ANY:

JAMES A. GILLHAM
DISTRICT SUPERVISOR

DEPARTMENT OF THE INTERIOR
GEOLOGICAL SURVEY

SUNDRY NOTICES AND REPORTS ON WELLS

(Do not use this form for proposals to drill or to deepen or plug back to a different reservoir. Use Form 9-331-C for such proposals.)

1. oil well ☐ gas well ☒ other

2. NAME OF OPERATOR

Yates Petroleum Corporation ✓

3. ADDRESS OF OPERATOR

207 S. 4th, Artesia, New Mexico

4. LOCATION OF WELL (REPORT LOCATION CLEARLY. See space 17 below.)

AT SURFACE: 660' FSL and 660' FWL

AT TOP PROD. INTERVAL:

AT TOTAL DEPTH: same

16. CHECK APPROPRIATE BOX TO INDICATE NATURE OF NOTICE, REPORT, OR OTHER DATA

REQUEST FOR APPROVAL TO:

SUBSEQUENT REPORT OF:

TEST WATER SHUT-OFF ☐

FRACTURE TREAT ☐

SHOOT OR ACIDIZE ☐

REPAIR WELL ☐

PULL OR ALTER CASING ☐

MULTIPLE COMPLETE ☐

CHANGE ZONES ☐

ABANDON* ☐

(other) location change

17. DESCRIBE PROPOSED OR COMPLETED OPERATIONS (Clearly state all pertinent details, and give pertinent dates, including estimated date of starting any proposed work. If well is directionally drilled, give subsurface locations and measured and true vertical depths for all markers and zones pertinent to this work.)*

Location moved per request of Bureau of Land Management.

Old location: 1980/S 660/W Sec. 18-T8S-R26E

New location: 660/S 660/W Sec. 18-T8S-R26E

5. LEASE

NM-18031

6. IF INDIAN, ALLOTTEE OR TRIBE NAME

7. UNIT AGREEMENT NAME

8. FARM OR LEASE NAME

Huckaby "TJ" Federal

9. WELL NO.

1

10. FIELD OR WILDCAT NAME

Undes. Pecos Slope Abo

11. SEC., T., R., M., OR BLK. AND SURVEY OR AREA

Sec. 18-T8S-R26E

12. COUNTY OR PARISH 13. STATE

Chaves NM

14. API NO.

15. ELEVATIONS (SHOW DF, KDB, AND WD)

3583.3'

(NOTE: Report results of multiple completion or zone change on Form 9-330.)

Subsurface Safety Valve: Manu. and Type

Set @ Ft.

18. I hereby certify that the foregoing is true and correct

SIGNED Delores Williams TITLE Regulatory Secy DATE 4/13/82

(U.S. 584) GEORGE H. STEWART (This space for Federal or State office use)

APPROVED BY
CONDITIONS OF APPROVAL, IF ANY:

TITLE

DATE

MAY 28 1982
FOR
JAMES A. GILMAN
DISTRICT SUPERVISOR

*See Instructions on Reverse Side

NEW MEXICO OIL CONSERVATION COMMISSION
WELL LOCATION AND ACREAGE DEDICATION PLAT

Form C-102
Supersedes C-128
Effective 1-1-65

All distances must be from the outer boundaries of the Section

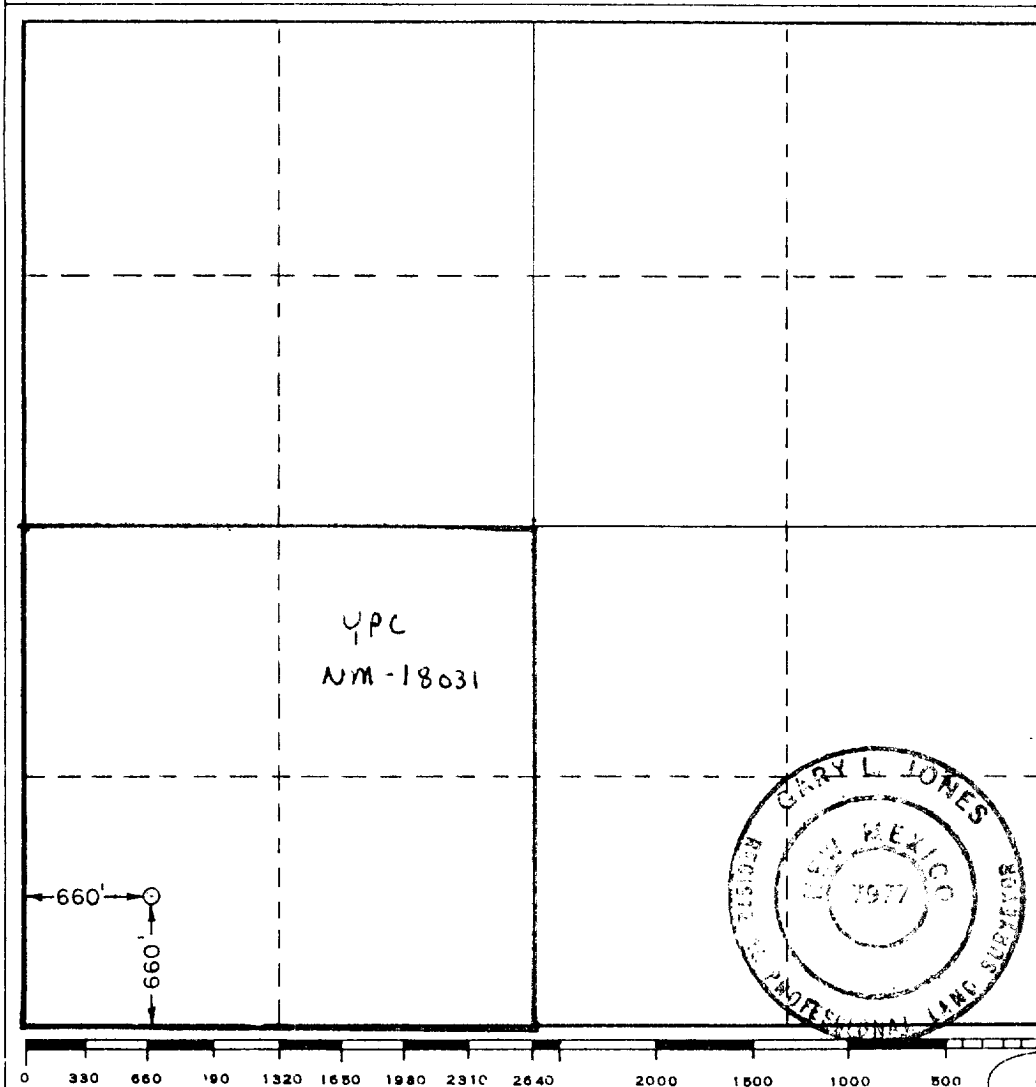
Operator YATES PETROLEUM CORPORATION			Lease Huckaby "TJ" Federal		Well No. 1
Unit Letter M	Section 18	Township 8 South	Range 26 East	County Chaves	
Actual Footage Location of Well: 660 feet from the South line and 660 feet from the West line					
Ground Level Elev. 3583.3'	Producing Formation Abo		Pool Undes. Pecos-Slope Abo		Dedicated Acreage: 160 Acres

1. Outline the acreage dedicated to the subject well by colored pencil or hatchure marks on the plat below.
2. If more than one lease is dedicated to the well, outline each and identify the ownership thereof (both as to working interest and royalty).
3. If more than one lease of different ownership is dedicated to the well, have the interests of all owners been consolidated by communitization, unitization, force-pooling, etc?

☐ Yes ☐ No If answer is "yes," type of consolidation _____

If answer is "no," list the owners and tract descriptions which have actually been consolidated. (Use reverse side of this form if necessary.) _____

No allowable will be assigned to the well until all interests have been consolidated (by communitization, unitization, forced-pooling, or otherwise) or until a non-standard unit, eliminating such interests, has been approved by the Commission.



CERTIFICATION

I hereby certify that the information contained herein is true and complete to the best of my knowledge and belief.

Ken Beardemohl

Name

Ken Beardemohl

Position

Regulatory Coordinator

Company

Yates Petroleum Corp.

Date

4/12/82

I hereby certify that the well location shown on this plat was plotted from field notes of actual surveys made by me or under my supervision, and that the same is true and correct to the best of my knowledge and belief.

Date Surveyed

3/12/82

Registered Professional Engineer and/or Land Surveyor

Gary L. Jones

Certificate No.

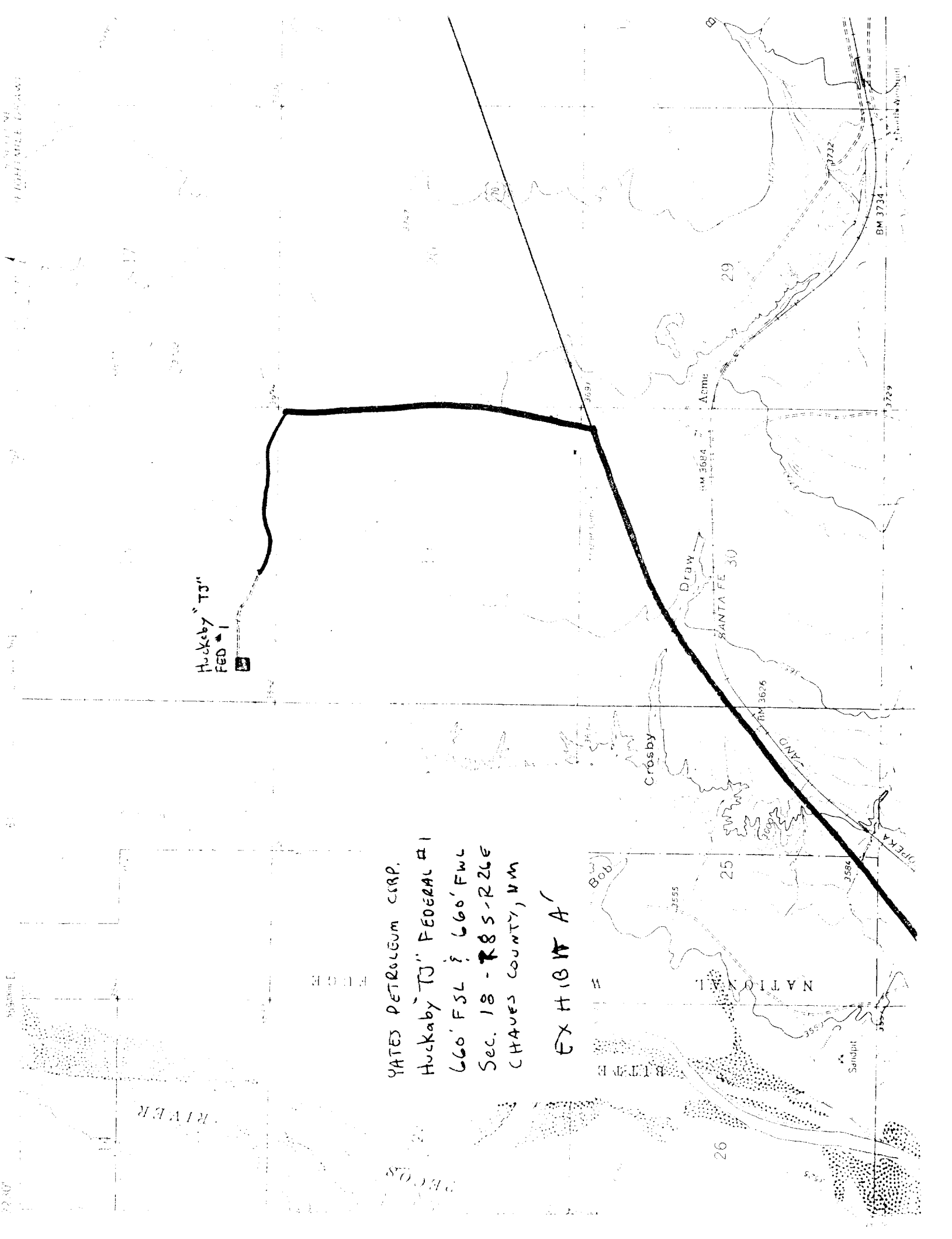
7977



Huckaby "TJ"
FED #1

YATES PETROLEUM CORP.
Huckaby "TJ" FEDERAL #1
660' FSL ? 660' FWL
Sec. 18 - R8S-R26E
CHAVES COUNTY, NM

EXHIBIT A



NEW MEXICO OIL CONSERVATION COMMISSION
WELL LOCATION AND ACREAGE DEDICATION PLAT

Form C-102
Supersedes C-128
Effective 1-1-65

All distances must be from the outer boundaries of the Section.

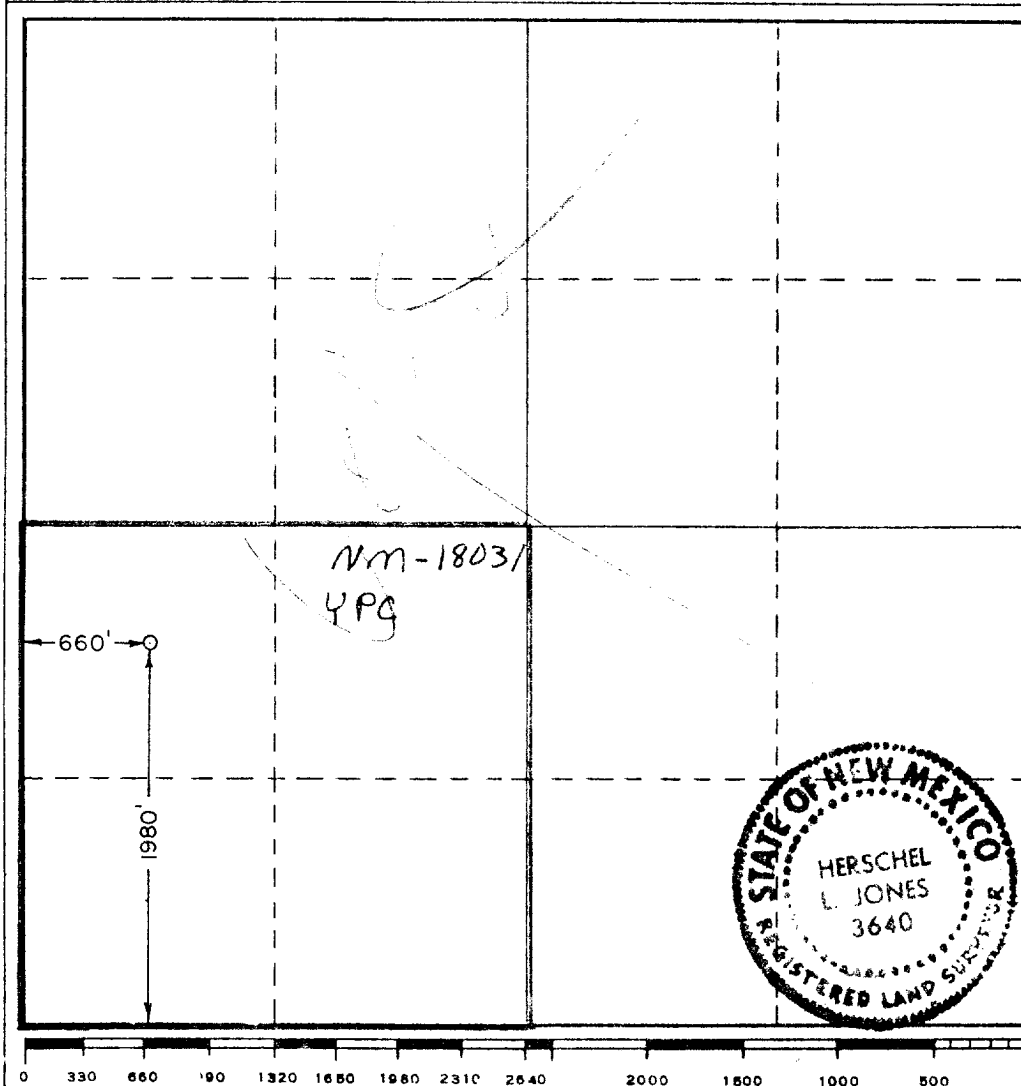
Operator YATES PETROLEUM CORPORATION			Lease Huckabay "TJ" Federal		Well No. 1
Unit Letter L	Section 18	Township 8 South	Range 26 East	County Chaves	
Actual Footage Location of Well: 1980 feet from the South line and 660 feet from the West line					
Ground Level Elev. 3586.3'	Producing Formation Abo		Pool Undes. Pecos Slope Abo		Dedicated Acreage: 160 Acres

1. Outline the acreage dedicated to the subject well by colored pencil or hachure marks on the plat below.
2. If more than one lease is dedicated to the well, outline each and identify the ownership thereof (both as to working interest and royalty).
3. If more than one lease of different ownership is dedicated to the well, have the interests of all owners been consolidated by communitization, unitization, force-pooling, etc?

☐ Yes ☐ No If answer is "yes," type of consolidation _____

If answer is "no," list the owners and tract descriptions which have actually been consolidated. (Use reverse side of this form if necessary.) _____

No allowable will be assigned to the well until all interests have been consolidated (by communitization, unitization, forced-pooling, or otherwise) or until a non-standard unit, eliminating such interests, has been approved by the Commission.



CERTIFICATION

I hereby certify that the information contained herein is true and complete to the best of my knowledge and belief.

Ken Beardemphl

Name

Ken Beardemphl

Position

Yates Petroleum Corporation

Company

Regulatory Coordinator

Date

3/3/82

I hereby certify that the well location shown on this plat was plotted from field notes of actual surveys made by me or under my supervision, and that the same is true and correct to the best of my knowledge and belief.

Date Surveyed

3-1-82

Registered Professional Engineer and/or Land Surveyor

Herschel L. Jones

Certificate No.

3640

YATES PETROLEUM CORPORATION
Huckaby "TJ" Federal #1
1980' FSL and 660' FWL
Section 18-T8S-R26E
Chaves County, New Mexico

In conjunction with Form 9-331C, Application for Permit to Drill subject well, Yates Petroleum Corporation submits the following ten items of pertinent information in accordance with USGS requirements.

1. The geologic surface formation is sandy alluvium.

2. The estimated tops of geologic markers are as follows:

San Andres	495'
Glorieta	1645'
Fullerton	3115'
Abo	3855'
TD	4550'

3. The estimated depths at which anticipated water, oil or gas formations are expected to be encountered:

Water: approximately 260'-330'

Oil or Gas: Abo 3900'

4. Proposed Casing Program: See Form 9-331C.

5. Pressure Control Equipment: See Form 9-331C and Exhibit B.

6. Mud Program: See Form 9-331C.

7. Auxiliary Equipment: Kelly Cock; pit level indicators and flow sensor equipment;
sub with full-opening valve on floor, drill pipe connection.

8. Testing, Logging and Coring Program:

Samples: Surface casing to TD.

DST's: As warranted.

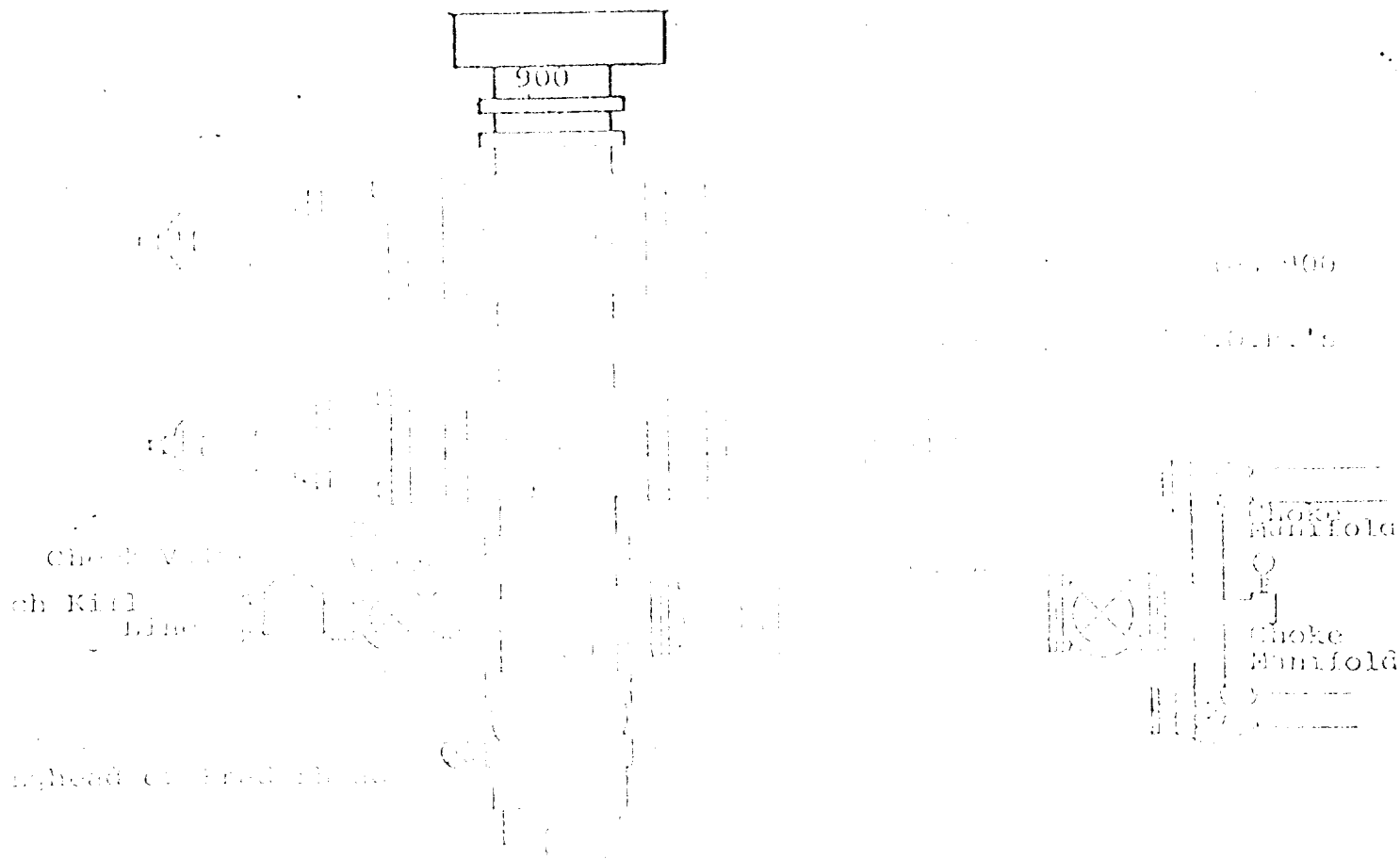
Coring: None anticipated.

Logging: CNL-FDC TD to casing w/GR-CNL on to surface and DLL TD to casing with RxO.

9. No abnormal pressures or temperatures are anticipated.

10. Anticipated starting date: As soon as possible after approval.

EXHIBIT B



Following are the minimum requirements for the wellhead and flowline:

- All preventer and wellhead components shall be equipped with pressure controls installed prior to well completion.
- Choke outlet to be equipped with a pressure control.
- Kill line to be of all steel and sized for minimum pressure rating.
- All connections from operating manifolds to preventer to be all steel, hole or tube a minimum of one inch in diameter.
- The available closing pressure shall be at least 15% in excess of that required with sufficient volume to operate the B.O.P.'s.
- All connections to and from preventer to have a pressure rating equivalent to that of the B.O.P.'s.
- Inside blowout preventer to be available on rig floor.
- Operating controls located a safe distance from the rig floor.
- Hole must be kept filled on trips below intermediate casing. Operator not responsible for blowouts resulting from not keeping hole full.
- D. P. float must be installed and used below zone of first gas intrusion.