

UNITED STATES  
DEPARTMENT OF THE INTERIOR  
GEOLOGICAL SURVEYSUBMIT IN TYPE CATE\*  
(Other instructions on  
reverse side)Form approved.  
Budget Bureau No. 42-R1425.

30-005-61632

## APPLICATION FOR PERMIT TO DRILL, DEEPEN, OR PLUG BACK

## 1a. TYPE OF WORK

DRILL ☒DEEPEN ☐PLUG BACK ☐

## b. TYPE OF WELL

OIL  
WELL ☐GAS  
WELL ☒

OTHER

SINGLE  
ZONE ☒MULTIPLE  
ZONE ☐

## 2. NAME OF OPERATOR

McClellan Oil Corporation ✓

## 3. ADDRESS OF OPERATOR

P. O. Drawer 730, Roswell, NM 88208

## 4. LOCATION OF WELL (Report location clearly and in accordance with any State requirements.)

At surface

2120' FSL &amp; 660' FWL

At proposed prod. zone

## 14. DISTANCE IN MILES AND DIRECTION FROM NEAREST TOWN OR POST OFFICE\*

20 miles northeast of Roswell

## 15. DISTANCE FROM PROPOSED\*

LOCATION TO NEAREST  
PROPERTY OR LEASE LINE, FT.

(Also to nearest drlg. unit line, if any)

660'

## 18. DISTANCE FROM PROPOSED LOCATION\*

TO NEAREST WELL, DRILLING, COMPLETED,  
OR APPLIED FOR, ON THIS LEASE, FT.

2500

## 16. NO. OF ACRES IN LEASE

1280

## 19. PROPOSED DEPTH

4000

17. NO. OF ACRES ASSIGNED  
TO THIS WELL

160

## 20. ROTARY OR CABLE TOOLS

Rotary

## 21. ELEVATIONS (Show whether DF, RT, GR, etc.)

3621' G.L.

## 22. APPROX. DATE WORK WILL START\*

## 23. PROPOSED CASING AND CEMENTING PROGRAM

SIZE OF HOLE	SIZE OF CASING	WEIGHT PER FOOT	SETTING DEPTH	QUANTITY OF CEMENT
* 17-1/2"	13-3/8"	48	700'	500 SX <b>CIRCULATE</b>
12-1/4"	8-5/8"	23	1400'	500 SX <b>CIRCULATE</b>
7-7/8"	4-1/2"	10.5	4000'	300 SX

\* Drill to 700' if no lost circulation zones are encountered, reduce hole size and drill to 1400'. If lost circulation is present, then the 13-3/8" casing will be set.

Propose to drill the Abo formation. If production is indicated, will set 4-1/2" casing & attempt completion. Drill with water and native mud to top of Abo, will mud up with salt gel mud, 40 viscosity, 15 water loss, 10 lb./gal. weight.

Gas is not dedicated.

IN ABOVE SPACE DESCRIBE PROPOSED PROGRAM: If proposal is to deepen or plug back, give data on present productive zone and proposed new productive zone. If proposal is to drill or deepen directionally, give pertinent data on subsurface locations and measured and true vertical depths. Give blowout preventer program, if any.

24.

SIGNED

Mark McClellan

TITLE

Geologist

DATE

May 11, 1982

(This space for Federal or State office use)

PERMIT NO.

(One of) GEORGE H. STEWART

APPROVAL DATE

APPROVED BY

FOR

TITLE

DATE

CONDITIONS OF APPROVAL

IF ANY GILFILLAN  
DISTRICT SUPERVISOR

\*See Instructions On Reverse Side

## OIL CONSERVATION DIVISION

STATE OF NEW MEXICO  
ENERGY AND MINERALS DEPARTMENT

P. O. BOX 2088

SANTA FE, NEW MEXICO 87501

Form C-102  
Revised 10-1-78

All distances must be from the outer boundaries of the Section.

Operator <b>McClellan Oil Corp.</b>		Lease <b>Coyote Federal</b>		Well No. <b>#5</b>	
Unit Letter <b>L</b>	Section <b>7</b>	Township <b>8 South</b>	Range <b>25 East</b>	County <b>Chaves</b>	
Actual Footage Location of Well: <b>2120</b> feet from the <b>South</b> line and <b>660</b> feet from the <b>West</b> line					
Ground Level Elev. <b>3621</b>	Producing Formation <b>Abo</b>		Pool <b>Pecos Slope Abo</b>	Dedicated Acreage: <b>160</b> Acres	

1. Outline the acreage dedicated to the subject well by colored pencil or hatchure marks on the plat below.

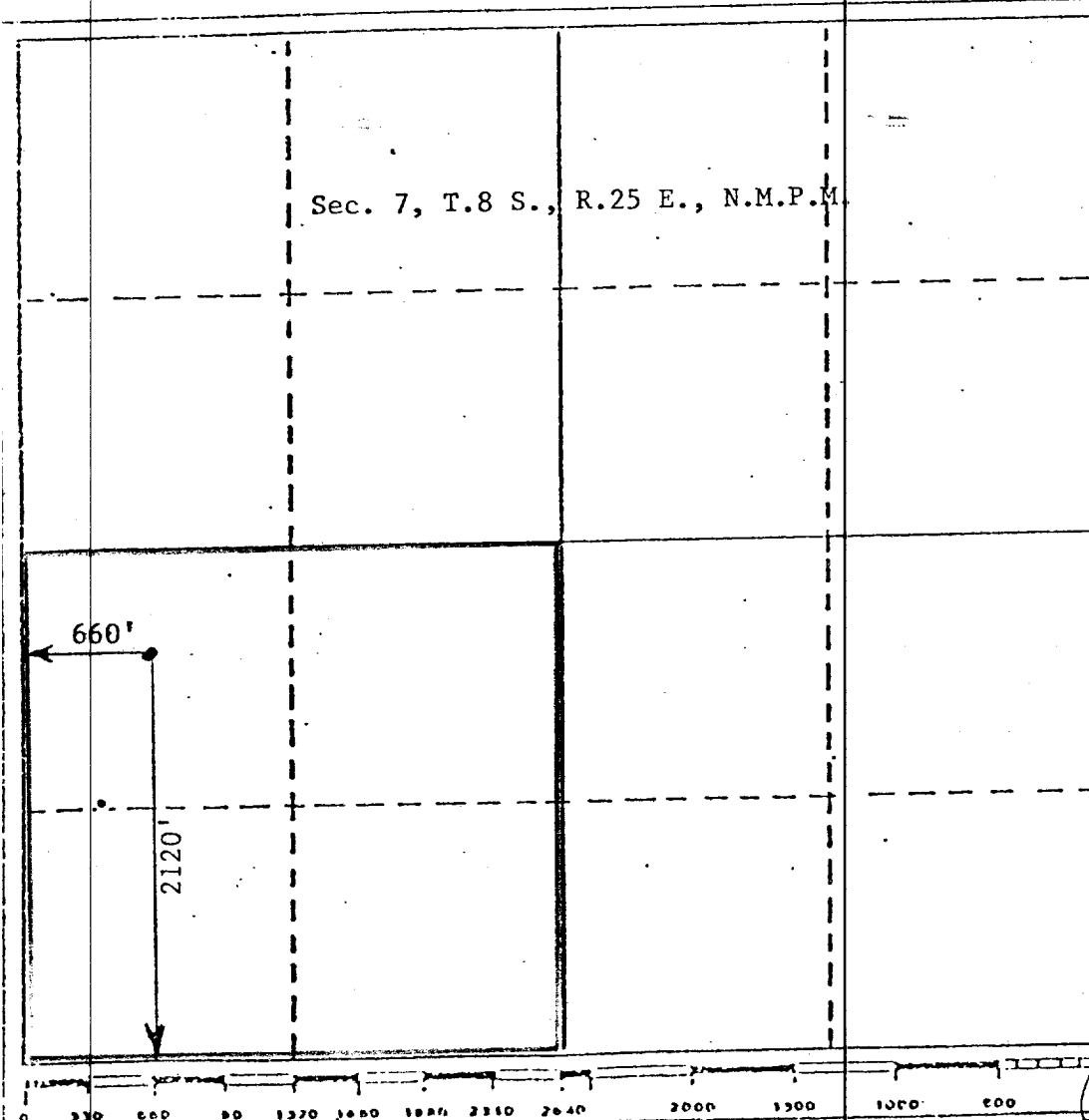
2. If more than one lease is dedicated to the well, outline each and identify the ownership thereof (both as to working interest and royalty).

3. If more than one lease of different ownership is dedicated to the well, have the interests of all owners been consolidated by communitization, unitization, force-pooling, etc?

☐ Yes ☐ No If answer is "yes," type of consolidation \_\_\_\_\_

If answer is "no," list the owners and tract descriptions which have actually been consolidated. (Use reverse side of this form if necessary.) \_\_\_\_\_

No allowable will be assigned to the well until all interests have been consolidated (by communitization, unitization, forced-pooling, or otherwise) or until a non-standard unit, eliminating such interests, has been approved by the Division.



## CERTIFICATION

I hereby certify that the information contained herein is true and complete to the best of my knowledge and belief.

*Mark McClellan*

Name

Mark McClellan

Position

Geologist

Company

McClellan Oil Corp.

Date

April 7, 1982

I hereby certify that the well location shown on this plat was plotted from field notes of actual surveys made by me or under my supervision, and that the same is true and correct to the best of my knowledge and belief.

Date Surveyed

April 20, 1982

Registered Professional Engineer and/or Land Surveyor

John D. Jaquess, P.E. &amp; L.S.

Certificate No.

6290

SURFACE USE PLAN

McClellan Oil Corporation: Coyote Federal No. 5  
2120' FSL & 660' FWL Section 7, T8S, R25E  
Chaves County, New Mexico  
Federal Lease NM-16069



1. Existing Roads

Exhibit "A" is a portion of the Chaves County road map of the New Mexico State Highway Department, showing the proposed well site in relation to nearby highways and ranch-oil field roads. U. S. Highway 285 will be used for 7.6 miles from Roswell to the ranch road. This highway is maintained by the State of New Mexico. The oil field-ranch road will be used for approximately 6.5 miles. This road is constructed of caliche, is approximately 12' to 35' in width and is maintained by the county, area ranchers and oil operators who utilize this road, an improved pipeline road will be used for approximately 1/2 mile. All roads and highways to be used are marked in yellow and the proposed well site and nearby towns are marked in red.

2. Planned Access Road

Exhibit "B" shows the ranch and oil field roads. The new road to be constructed is marked in red and is approximately 200 feet in length. This new road will be approximately 12' wide. Existing cattle guards and fences will be left intact.

3. Location of Existing Wells

Exhibit "B" shows all of the producing wells within 2 miles of the proposed test with ownership of various tracts.

4. Location of Tank Battery Production Facilities & Production Gathering & Service Lines

If gas production is achieved, the location of the line will be determined by the purchaser laying in the gathering system to his existing gas lines.

5. Location and Type of Water Supply

There is no useable water in this area. All water needed for drilling, testing, and completion will be trucked in by a commercial transport on existing roads as shown on Exhibit "A".

6. Source of Construction Materials

It will be necessary to use caliche on new road and location. This material will be obtained from a pit located in Section 1, T8S, R24E, SE/SE, Chaves County, New Mexico.

7. Handling of Waste Disposal

All waste material remaining after the drilling of this well will be placed in mud pit as shown on Exhibit "D". Any combustible or biochemically degradable material will be placed in the "burn and trash pit."

8. Ancillary Facilities  
No ancillary facilities are planned.
9. Well Site Layout  
This information is shown on Exhibit "D".
10. Plan for Restoration of Surface  
All pits will be filled in and leveled. Deadmen will be removed. The access road and location will be restored as near as possible to its natural state following instructions from appropriate governmental agency, if well is abandoned, otherwise the location will be cleared and maintained in an orderly manner.
11. Other Information  
No unusual topography exists on the well site or access roads and the surface is depicted on Exhibit "B".
12. Operator Representatives  
Paul Ragsdale P.O. Drawer 730, Roswell, New Mexico 88202  
623-3940 Home Mobile Unit 4128(Roswell Caprock 623-0989)  
  
Mark H. McClellan 2902 W. 4th St., Roswell, New Mexico 88201  
622-3200 Office  
622-2128 Home
13. Certification  
I certify that I, or persons under my direct supervision, have inspected the proposed drill site and access route; that I am familiar with the conditions which presently exist; that the statements made in this plan are, to the best of my knowledge, true and correct; and that the work associated with the operations proposed herein will be performed by McClellan Oil Corporation and its contractors and subcontractors in conformity with this plan and the terms and conditions under which it is approved.

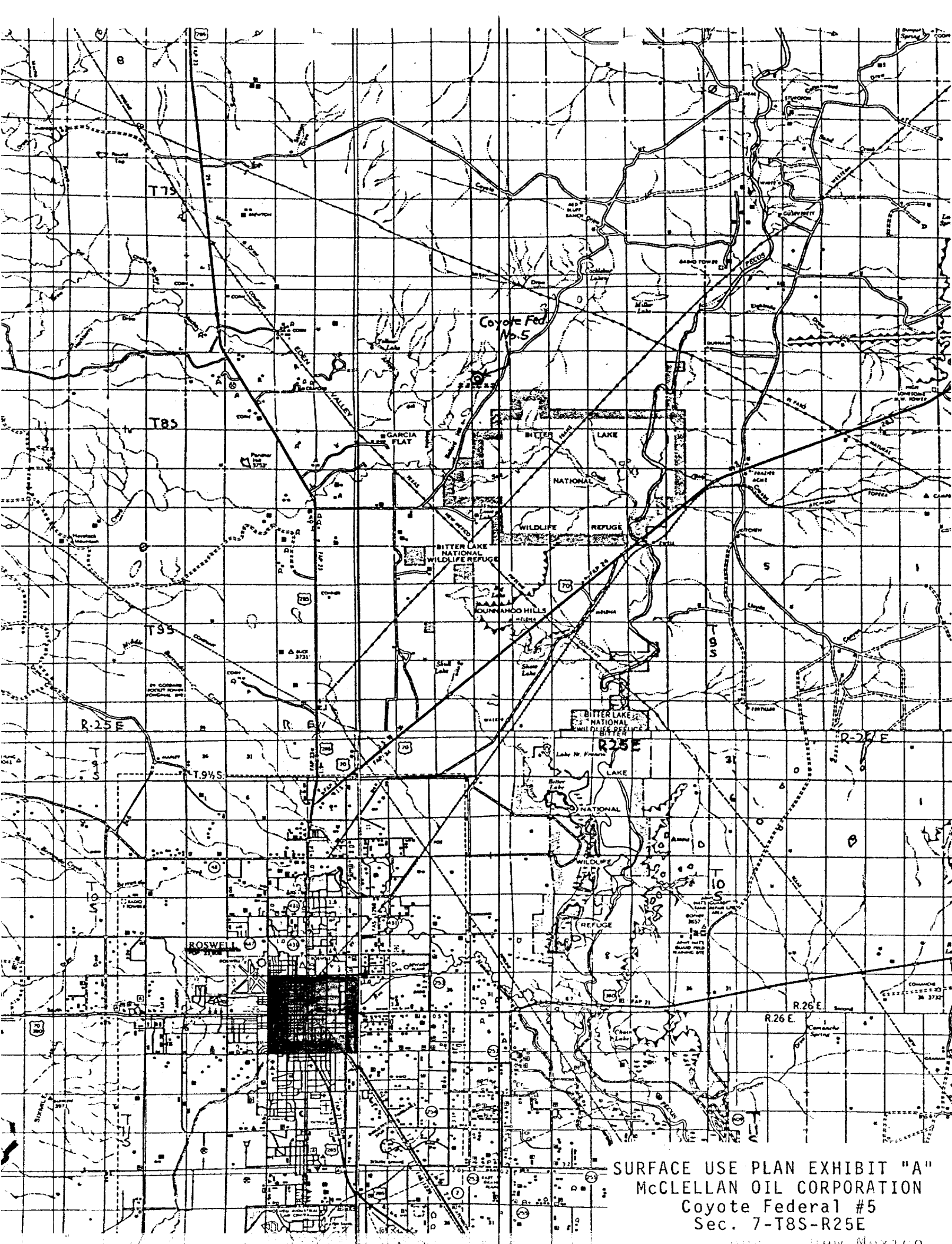
Mark McClellan  
Mark McClellan

COYOTE FED. No. 5  
REQUIREMENTS  
(NTL-5)

1. Location: 2120 FSL & 660' FWL, Sec. 7-T8S-R25E
2. Elevation: 3621' G. L.
3. Geologic name of surface formation: See archaeological report
4. Type of drilling rig and associated equipment: Rotary
5. Proposed drilling depth and objective formation: 4000' Abo.
6. Estimated tops of geologic markers:

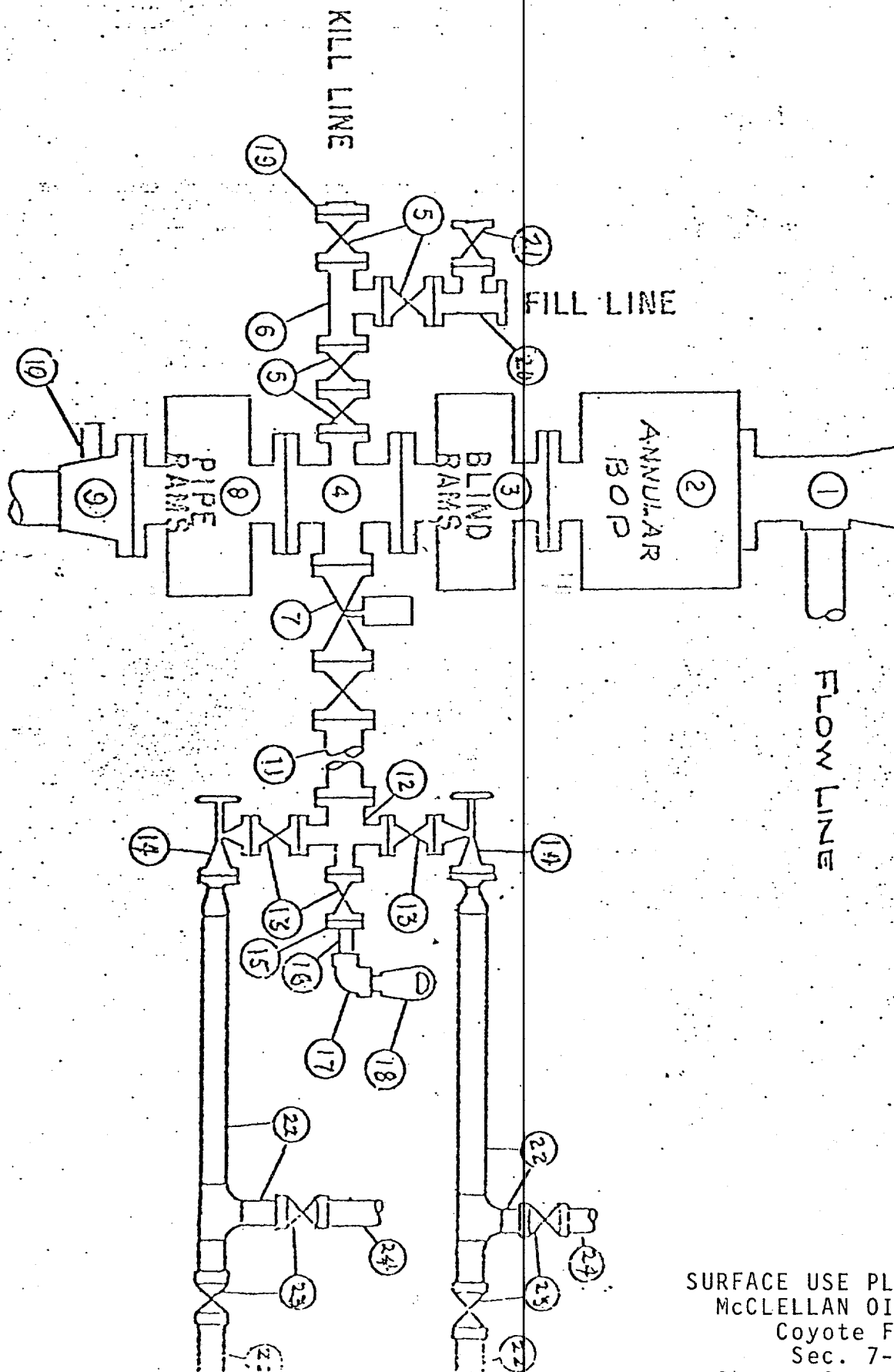
Yates _____	San Andres <u>316'</u>	Abo <u>3404'</u>
7-Rivers _____	Glorieta <u>1230'</u>	Wolfcamp _____
Queen _____	Tubb <u>2708'</u>	_____
7. Estimated depths of any oil, water, or gas: 3404-4000', possible gas
- 8-9. Proposed casing program:

<u>13-3/8" @ 700' Grade H-40 Wt. 48</u>	Type Cement <u>500 sx Class "C"</u>
<u>8-5/8" @ 1400' Grade J-55 Wt. 23</u>	Type Cement <u>500 sx Class "C"</u>
<u>4-1/2" @ 4000' Grade J-55 Wt. 10.5</u>	Type Cement <u>300 sx Class "C" 50-50POZ</u>
10. Specifications for pressure control equipment and testing procedures: 10" - 3000 PSI Shaffer Double Ram (See Exhibit "E")
11. Type and characteristics of drilling fluids: Native mud to top of Abo. Mud up w/salt base gel; 15cc water loss; 50 viscosity; 9.5 lb./gal. wt.
12. Testing, logging, and coring programs: No testing or coring is anticipated.  
Will run compensated Neutron Formation Density and Dual Laterolog Micro SFL gamma ray logs
13. Anticipated abnormal pressures or temperature: None anticipated
14. Anticipated commencement and completion date: June 15, 1982 - June 30, 1982
15. Other pertinent information: \_\_\_\_\_



SURFACE USE PLAN EXHIBIT "A"  
McCLELLAN OIL CORPORATION  
Coyote Federal #5  
Sec. 7-T8S-R25E

# BLOWOUT PREVENTER SPECIFICATION



SURFACE USE PLAN EXHIBIT "E"  
 McCLELLAN OIL CORPORATION  
 Coyote Federal #5  
 Sec. 7-T8S-R25E  
 Chaves County, New Mexico



STATE OF NEW MEXICO  
ENERGY AND MINERALS DEPARTMENT

OIL CONSERVATION DIVISION  
ARTESIA DISTRICT OFFICE

BRUCE KING  
GOVERNOR

LARRY KEHOE  
SECRETARY

P.O. DRAWER DD  
ARTESIA, NEW MEXICO 88210  
(505) 748-1283

June 2, 1982

McClellan Oil Corp.  
P.O. Drawer 730  
Roswell, N.M. 88202

Re: Coyote Federal  
#5-L-7-8-25  
Chaves County, N.M.

Gentlemen:

We hereby acknowledge receipt of Form 9-331C Application For Permit to Drill the subject well approved on May 28, 1982.

Said well is at an unorthodox location which must be approved by the Oil Conservation Division prior to producing.

If you have any questions concerning this matter please feel free to call upon me.

Sincerely,

A handwritten signature in cursive script that reads "W.A. Gressett".

W.A. Gressett  
Supervisor, District II

WAG:dm