

NO. OF COPIES RECEIVED	5
DISTRIBUTION	
SANTA FE	1
FILE	1
U.S.G.S.	2
LAND OFFICE	
OPERATOR	1

JUN 3 1982

O. C. D.

ARTESIA OFFICE

APPLICATION FOR PERMIT TO DRILL, DEEPEN, OR PLUG BACK

4. Type of Work

DRILL ☒DEEPEN ☐PLUG BACK ☐

5. Type of Well

OIL WELL ☐GAS WELL ☒OTHER ☐SINGLE ZONE ☐MULTIPLE ZONE ☐

6. Name of Operator

Yates Petroleum Corporation

7. Address of Operator

207 S. 4th, Artesia, New Mexico 88210

8. Location of Well

UNIT LETTER K

LOCATED 1980

FEET FROM THE

South

LINE

9. 1980

FEET FROM THE

West

LINE OF SEC. 19

TWP. 6S

RGE. 26E

NADPM

12. County

Chaves

5A. Indicate Type of Lease

STATE ☐FEE ☒

5. State Oil & Gas Lease No.

7. Unit Agreement Name

8. Form or Lease Name

Sacra "SA"

9. Well No.

9

10. Field and Pool or Wildcat

X Pecos Slope Abo

11. Elevations (show whether DF, KT, etc.)

3723.3' GL

21A. Kind & Status Plug. Bond

Blanket

19. Proposed Depth

4200'

19A. Formation

Abo

20. Rotary or C.T.

Rotary

21B. Drilling Contractor

not determined

22. Approx. Date Work will start

ASAP

13.

PROPOSED CASING AND CEMENT PROGRAM

SIZE OF HOLE	SIZE OF CASING	WEIGHT PER FOOT	SETTING DEPTH	SACKS OF CEMENT	EST. TOP
14 3/4"	10 3/4"	40.5# J-55	900'	850 sx	circulated
7 7/8"	4 1/2"	9.5#	TD	350 sx	

We propose to drill and test the Abo and intermediate formations. Approximately 900' of surface casing will be set and cement circulated to shut off gravel and caving. If needed (lost circulation) 8 5/8" intermediate casing will be run to 1500' and cemented with enough cement calculated to tie back into the surface casing. If commercial, production casing will be run and cemented with adequate cover, perforated and stimulated as needed for production.

MUD PROGRAM: FW gel and LCM to 900', Brine to 3200', Brine & KCL water to TD.

BOP PROGRAM: BOP's will be installed at the offset and tested daily.

GAS NOT DEDICATED.

APPROVAL VALID FOR 180 DAYS

PERMIT EXPIRES 12-8-82

UNLESS DRILLING UNDERWAY

ABOVE SPACE DESCRIBE PROPOSED PROGRAM; IF PROPOSAL IS TO DEEPEN OR PLUG BACK, GIVE DATA ON PRESENT PRODUCTIVE ZONE AND PROPOSED NEW PRODUCTION ZONE. GIVE BLOWOUT PREVENTER PROGRAM, IF ANY.

I hereby certify that the information above is true and complete to the best of my knowledge and belief.

SIGNED

(This space for State Use)

Title Regulatory Coordinator

Date

5/28/82

PROVED BY

TITLE

OIL AND GAS INSPECTOR

DATE

JUN 8 1982

CONDITIONS OF APPROVAL, IF ANY:

Pasted
ID-1
API & New
Doc Book
6-11-82

NEW MEXICO OIL CONSERVATION COMMISSION
WELL LOCATION AND ACREAGE DEDICATION PLAT

Form C-102
Supersedes C-128
Effective 1-1-65

All distances must be from the outer boundaries of the Section.

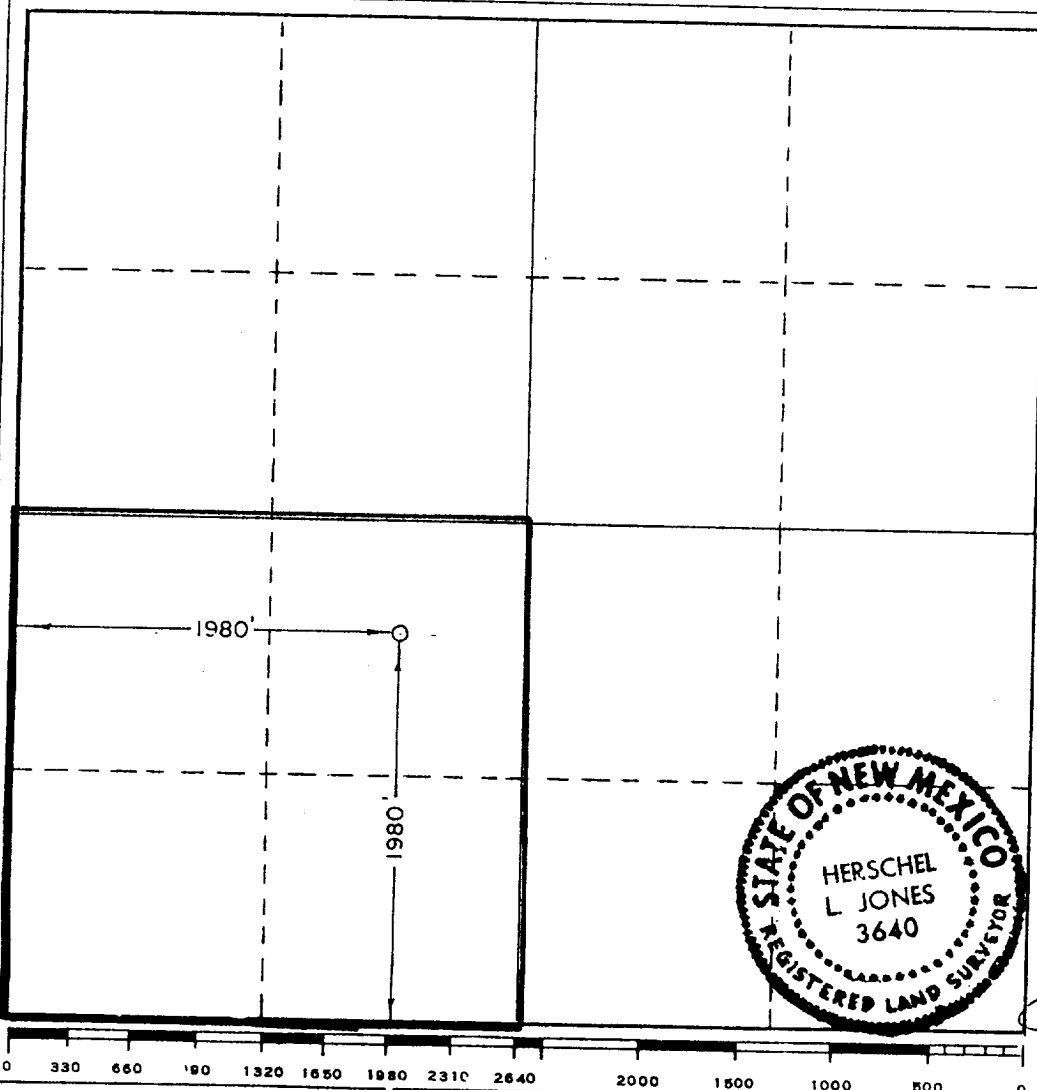
Operator YATES PETROLEUM CORPORATION			Lease Sacra "SA"		Well No. 9
Unit Letter K	Section 19	Township 6 South	Range 26 East	County Chaves	
Actual Footage Location of Well:					
1980 feet from the South line and		1980 feet from the West line			
Ground Level Elev. 3723.3'	Producing Formation Abo	Pool Holes. Pecos Slope Abo	Dedicated Acreage: 160 Acres		

1. Outline the acreage dedicated to the subject well by colored pencil or hatchure marks on the plat below.
2. If more than one lease is dedicated to the well, outline each and identify the ownership thereof (both as to working interest and royalty).
3. If more than one lease of different ownership is dedicated to the well, have the interests of all owners been consolidated by communitization, unitization, force-pooling, etc?

☐ Yes ☐ No If answer is "yes," type of consolidation _____

If answer is "no," list the owners and tract descriptions which have actually been consolidated. (Use reverse side of this form if necessary.) _____

No allowable will be assigned to the well until all interests have been consolidated (by communitization, unitization, forced-pooling, or otherwise) or until a non-standard unit, eliminating such interests, has been approved by the Commission.



CERTIFICATION

I hereby certify that the information contained herein is true and complete to the best of my knowledge and belief.

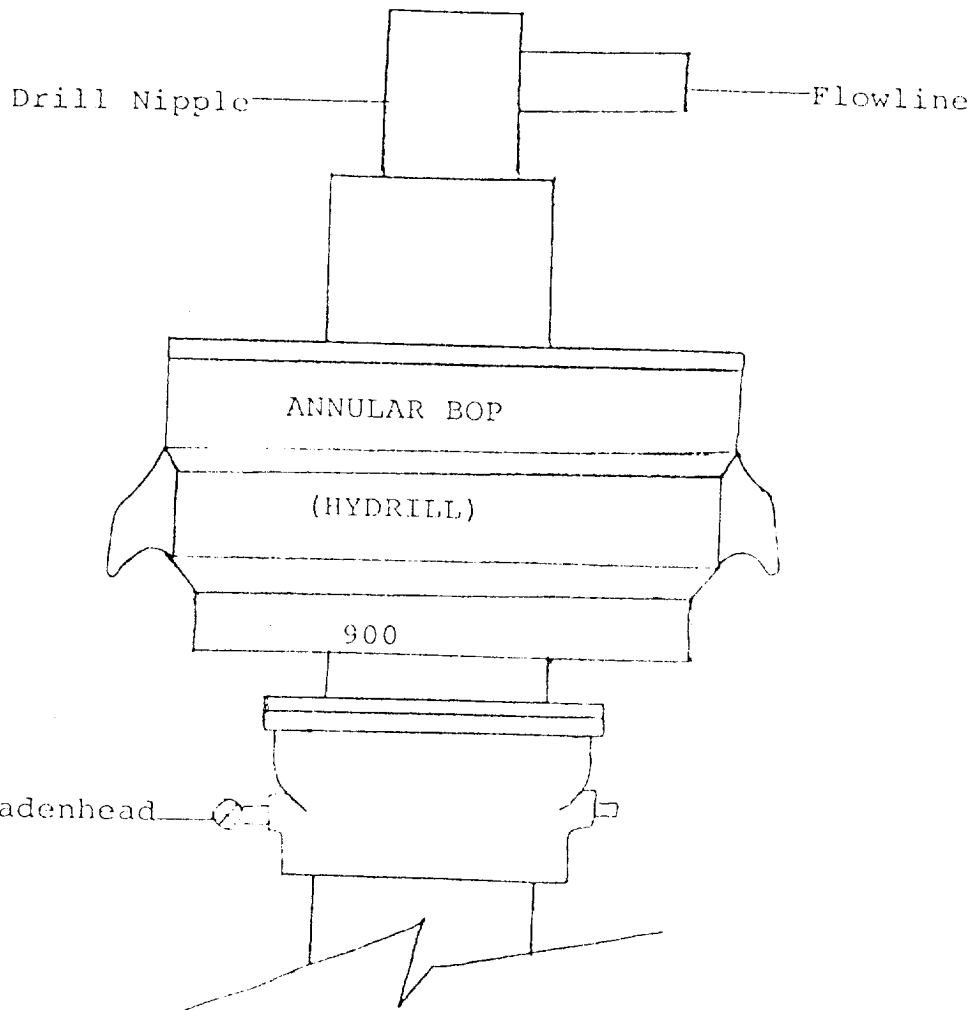
Ken Beardemphl
 Name
Ken Beardemphl
 Position
Regulatory Coordinator
 Company
Yates Petroleum Corp.
 Date
5/28/82

I hereby certify that the well location shown on this plat was plotted from field notes of actual surveys made by me or under my supervision, and that the same is true and correct to the best of my knowledge and belief.

Date Surveyed
May 24, 1982
 Registered Professional Engineer and/or Land Surveyor

Certificate No.

3640



THE FOLLOWING CONSTITUTE MINIMUM BLOWOUT PREVENTER REQUIREMENTS

1. All preventers to be hydraulically operated with secondary manual controls installed prior to drilling out from under casing.
2. All connections from operating manifolds to preventers to be all steel. Hole or tube a minimum of one inch in diameter.
3. The available closing pressure shall be at least 15% in excess of that required with sufficient volume to operate the BOP's.
4. All connections to and from preventer to have a pressure rating equivalent to that of the BOP's.
5. Hole must be kept filled on trips below intermediate casing.