

PEDCO

9720 B CANDELARIA N.E.  
ALBUQUERQUE, NEW MEXICO 87112  
(505) 293-4044

This is an amended plat as to ground level elevation.  
Please attach to application to drill.

Claudia

All distances must be from the outer boundaries of the Section.

Operator <b>Petroleum Development Corporation</b>			Lease <b>Lauralea</b>		JUL 20 1982		Well No. <b>#2</b>
Unit Letter <b>L</b>	Section <b>35</b>	Township <b>7 South</b>	Range <b>26 East</b>	County <b>O. C. D.</b> <b>ARTESIA OFFICE</b>			

Actual Portage Location of Well:

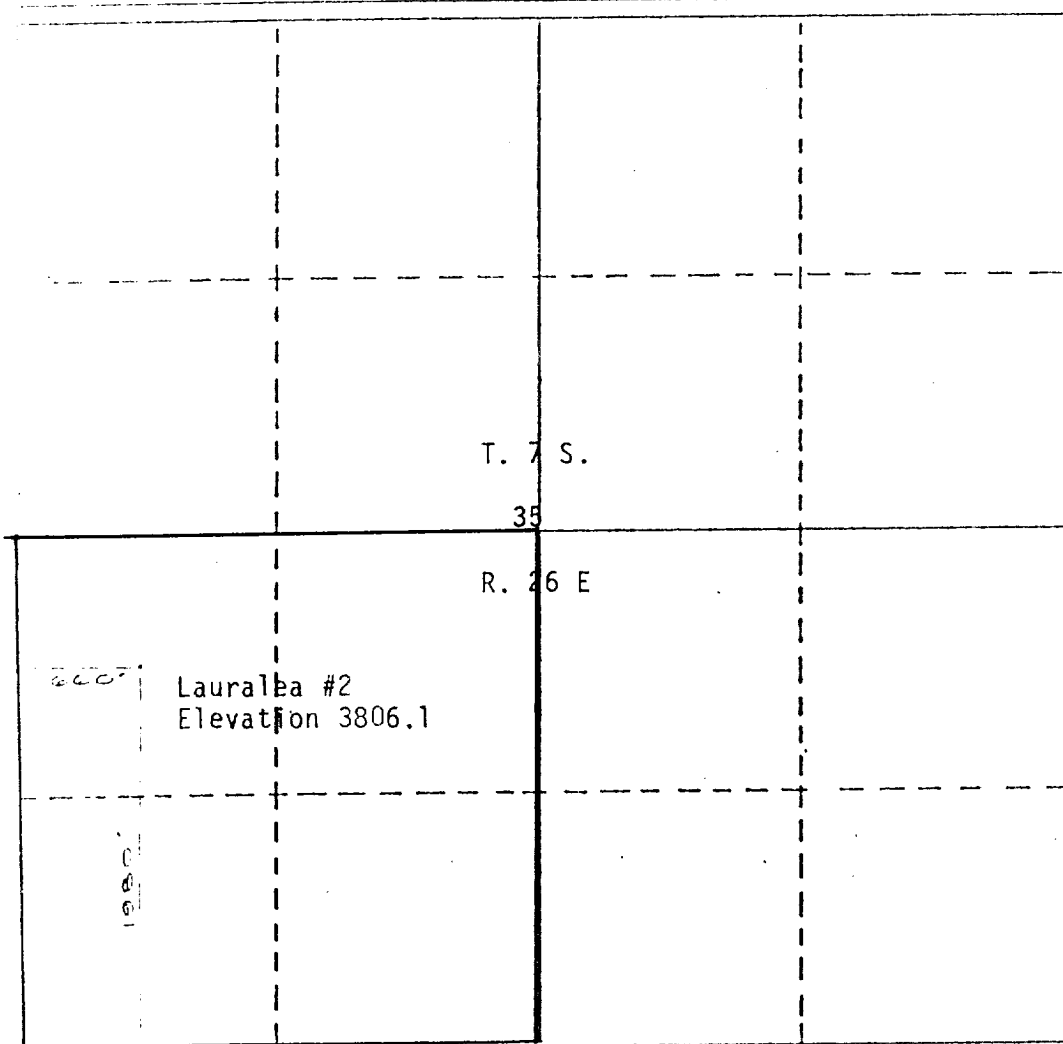
1980.0	feet from the south	line and	660.0	feet from the west	line
Ground Level Elev. <b>3806.1</b>	Producing Formation <b>Abo</b>	Pool <b>Und. Abo</b>	Dedicated Acreage: <b>160</b>		Acre

1. Outline the acreage dedicated to the subject well by colored pencil or hatchure marks on the plat below.
2. If more than one lease is dedicated to the well, outline each and identify the ownership thereof (both as to working interest and royalty).
3. If more than one lease of different ownership is dedicated to the well, have the interests of all owners been consolidated by communitization, unitization, force-pooling, etc?

☐ Yes ☐ No If answer is "yes," type of consolidation \_\_\_\_\_

If answer is "no," list the owners and tract descriptions which have actually been consolidated. (Use reverse side of this form if necessary.) \_\_\_\_\_

No allowable will be assigned to the well until all interests have been consolidated (by communitization, unitization, forced-pooling, or otherwise) or until a non-standard unit, eliminating such interests, has been approved by the Division.



CERTIFICATION

I hereby certify that the information contained herein is true and complete to the best of my knowledge and belief.

*Darryl Samples*

Name

Darryl Samples

Position

Agent

Company

Petroleum Development Corp.

Date

5/21/82

I hereby certify that the well location shown on this plat is correct and true to the notes of record and the same is true and correct to the best of my knowledge and belief.



5/21/82

Date Surveyed

Registered Professional Engineer and/or Land Surveyor

Richard B. Wright

Certificate No.

7929

350 110 90 1570 1600 1940 2310 2640 2000 1500 1000 500 0

All distances must be from the outer boundaries of the Section.

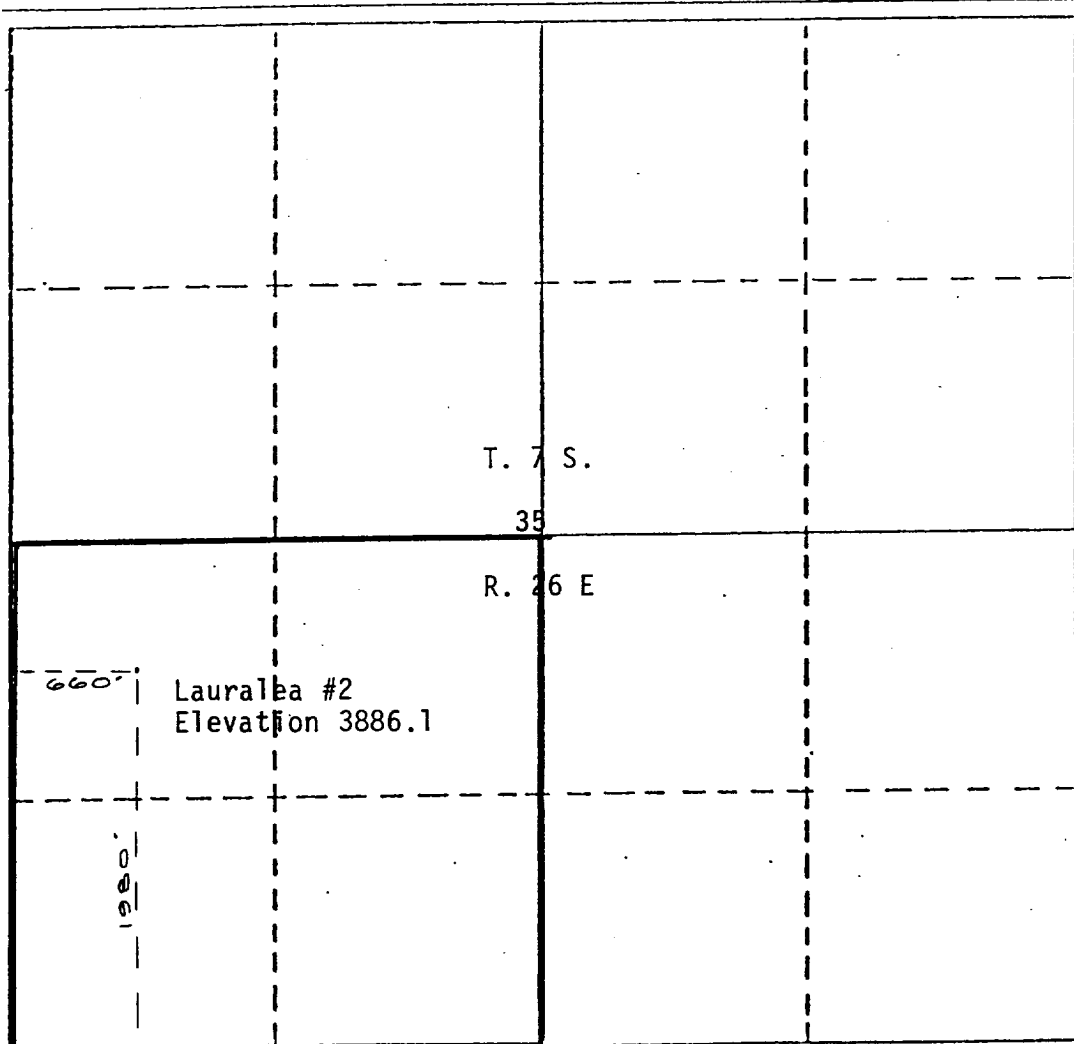
Operator <b>Petroleum Development Corporation</b>		Lease <b>Lauralea</b>		Well No. <b>#2</b>
Unit Letter <b>L</b>	Section <b>35</b>	Township <b>7 South</b>	Range <b>26 East</b>	County <b>Chaves</b>
Actual Postage Location of Well:				
<b>1980.0</b>	feet from the <b>south</b>	line and <b>660.0</b>	feet from the <b>west</b>	line
Ground Level Elev. <b>3886.1</b>	Producing Formation <b>Abo</b>	Pool <b>Wildcat 11/11/82</b>	Dedicated Acreage: <b>160</b> Acres	

1. Outline the acreage dedicated to the subject well by colored pencil or hatchure marks on the plat below.
2. If more than one lease is dedicated to the well, outline each and identify the ownership thereof (both as to working interest and royalty).
3. If more than one lease of different ownership is dedicated to the well, have the interests of all owners been consolidated by communitization, unitization, force-pooling, etc?

☐ Yes ☐ No If answer is "yes," type of consolidation \_\_\_\_\_

If answer is "no," list the owners and tract descriptions which have actually been consolidated. (Use reverse side of this form if necessary.) \_\_\_\_\_

No allowable will be assigned to the well until all interests have been consolidated (by communitization, unitization, forced-pooling, or otherwise) or until a non-standard unit, eliminating such interests, has been approved by the Division.



#### CERTIFICATION

I hereby certify that the information contained herein is true and complete to the best of my knowledge and belief.

*Darryl Samples*  
Name

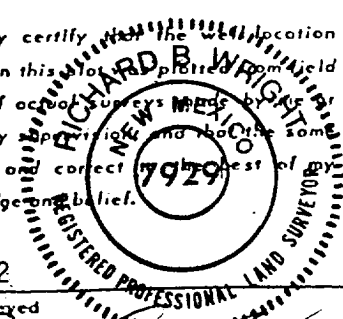
Darryl Samples  
Position

Agent  
Company

Petroleum Development Corp.  
Date

5/21/82

I hereby certify that the location shown on this plat is the location plotted from field notes of actual surveys made by me or under my supervision and that the same is true and correct to the best of my knowledge and belief.



5/21/82  
Date Surveyed

*Richard B. Wright*  
Registered Professional Engineer  
and/or Land Surveyor

Richard B. Wright  
Certificate No.

7929

