

N. MEXICO OIL CONSERVATION COMMISS
WELL LOCATION AND ACREAGE DEDICATION PLAT

Form C-102
Supersedes C-128
Effective 1-1-65

All distances must be from the outer boundaries of the Section.

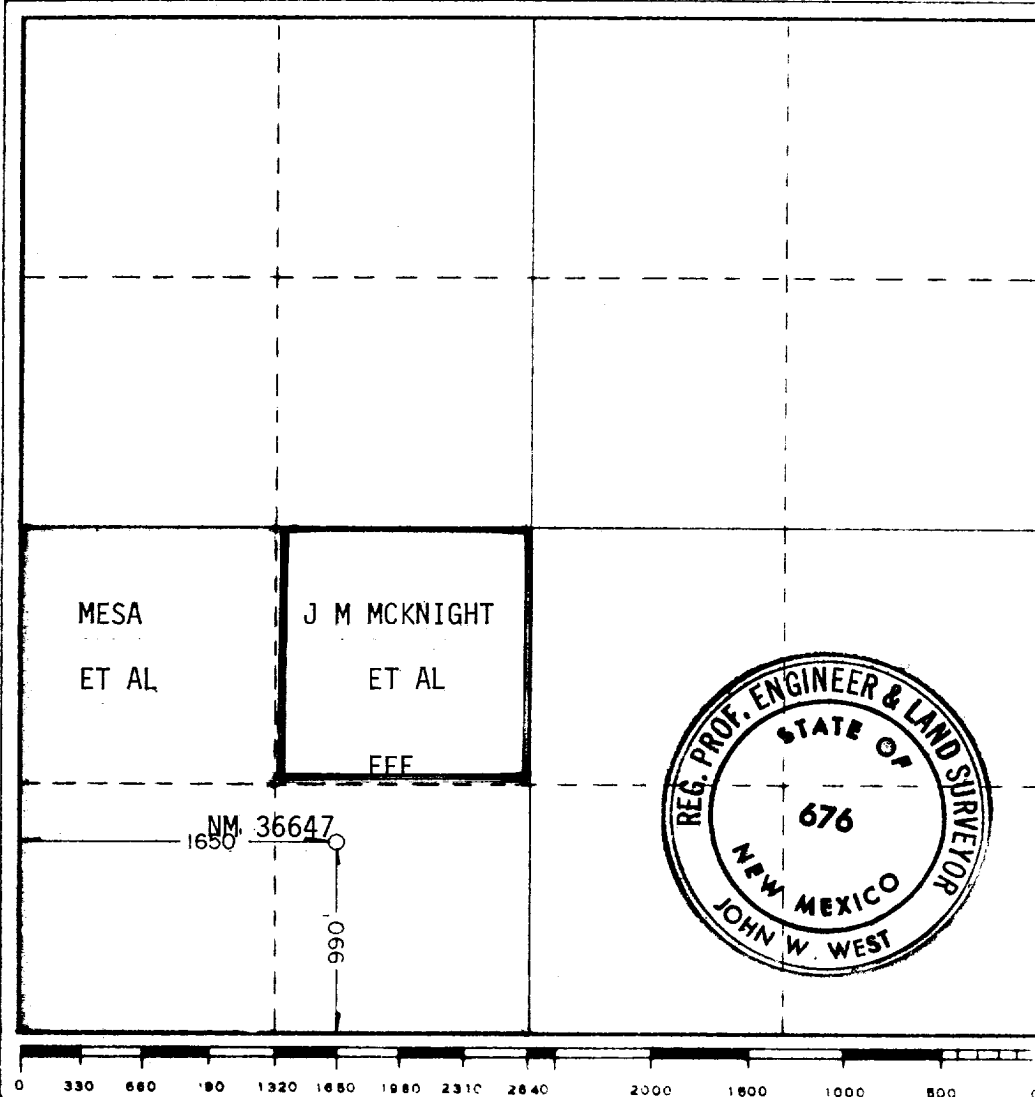
Operator Mesa Petroleum Company			Lease Macho Fed. Com.		Well No. 11
Unit Letter N	Section 7	Township 7 South	Range 23 East	County Chaves	
Actual Footage Location of Well: 990 feet from the south line and 1650 feet from the west line					
Ground Level Elev. 4112.1'	Producing Formation ABO	Pool UNDESIGNATED		Estimated Acreage: SW/4 160 Acres	

1. Outline the acreage dedicated to the subject well by colored pencil or hatchure marks on the plat below.
2. If more than one lease is dedicated to the well, outline each and identify the ownership thereof (both as to working interest and royalty).
3. If more than one lease of different ownership is dedicated to the well, have the interests of all owners been consolidated by communitization, unitization, force-pooling, etc?

☐ Yes ☐ No If answer is "yes;" type of consolidation COMMUNITIZATION IN PROGRESS

If answer is "no," list the owners and tract descriptions which have actually been consolidated (Use reverse side of this form if necessary.)

No allowable will be assigned to the well until all interests have been consolidated (by communitization, unitization, forced-pooling, or otherwise) or until a non-standard unit, eliminating such interests, has been approved by the Commission.



CERTIFICATION

I hereby certify that the information contained herein is true and complete to the best of my knowledge and belief.

R. E. Mathis

Name

R. E. MATHIS

Position

REGULATORY COORDINATOR

Company

MESA PETROLEUM CO.

Date

MAY 24, 1982

I hereby certify that the well location shown on this plat was plotted from field notes of actual surveys made by me or under my supervision, and that the same is true and correct to the best of my knowledge and belief.

Date surveyed

5-15-82

Registered Professional Engineer and/or Land Surveyor

John W. West

Certificate No **JOHN W. WEST 676**
PATRICK A. ROMERO 6863
Ronald J. Eidson 3239