

DEPARTMENT OF THE INTERIOR
GEOLOGICAL SURVEY

JUN 16 1982

5. LEASE DESIGNATION AND SERIAL NO.

NM-18483

6. IF INDIAN, ALLOTTEE OR TRIBE NAME

7. UNIT AGREEMENT NAME

8. FARM OR LEASE NAME

Morton "SZ" Federal

9. WELL NO.

2

10. FIELD AND POOL, OR WILDCAT

Under Pecos Slope Abo

11. SEC., T., R., M., OR BLK.
AND SURVEY OR AREA

Sec. 10-T8S-R25E

12. COUNTY OR PARISH

Chaves

13. STATE

NM

1a. TYPE OF WORK

DRILL ☒DEEPEN ☐ARTESIA, OFFICE
PLUG BACK ☐

b. TYPE OF WELL

OIL
WELL ☐GAS
WELL ☒

OTHER

SINGLE
ZONE ☐MULTIPLE
ZONE ☐

2. NAME OF OPERATOR

Yates Petroleum Corporation

3. ADDRESS OF OPERATOR

207 S. 4th, Artesia, New Mexico 88210

4. LOCATION OF WELL (Report location clearly and in accordance with any State requirements.)*

At surface

1650' 990' FNL and 990' FEL

At proposed prod. zone

same

14. DISTANCE IN MILES AND DIRECTION FROM NEAREST TOWN OR POST OFFICE*

Approximately 22 miles NNE of Roswell, New Mexico.

15. DISTANCE FROM PROPOSED*

LOCATION TO NEAREST

PROPERTY OR LEASE LINE, FT.

(Also to nearest drlg. unit line, if any)

660'

16. NO. OF ACRES IN LEASE

640

17. NO. OF ACRES ASSIGNED

TO THIS WELL

160

18. DISTANCE FROM PROPOSED LOCATION*

TO NEAREST WELL, DRILLING, COMPLETED,
OR APPLIED FOR, ON THIS LEASE, FT.

19. PROPOSED DEPTH

4150'

20. ROTARY OR CABLE TOOLS

Rotary

21. ELEVATIONS (Show whether DF, RT, GR, etc.)

3636.3 GL

22. APPROX. DATE WORK WILL START*

ASAP

23.

PROPOSED CASING AND CEMENTING PROGRAM

SIZE OF HOLE	SIZE OF CASING	WEIGHT PER FOOT	SETTING DEPTH	QUANTITY OF CEMENT
12 1/4"	10 4/3"	48# J-55	appr. 1000'	660 sx circulated
7 7/8"	4 1/2"	9.5#	TD	350 sx

We propose to drill and test the Abo and intermediate formations. Approximately 1000' of surface casing will be set and cement circulated to shut off gravel and caving. If needed (lost circulation) 8 5/8" intermediate casing will be run to 1500' and cemented with enough cement calculated to tie back into the surface casing. If commercial, production casing will be run and cemented with adequate cover, perforate, and stimulate as needed for production.

MUD PROGRAM: FW gel and LCM to 1000', Brine to 3500', Brine & KCL water to TD

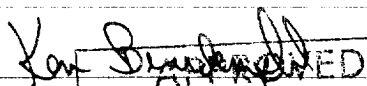
BOP PROGRAM: BOP's will be installed at the offset and tested daily.

GAS NOT DEDICATED.

IN ABOVE SPACE DESCRIBE PROPOSED PROGRAM: If proposal is to deepen or plug back, give data on present productive zone and proposed new productive zone. If proposal is to drill or deepen directionally, give pertinent data on subsurface locations and measured and true vertical depths. Give blowout preventer program, if any.

24.

SIGNED



TITLE Regulatory Coordinator

DATE 3/17/82

(This space for Federal or State office use)

PERMIT NO.

(Orig. Sgd.) GEORGE H. STEWART

APPROVAL DATE

APPROVED BY

FOR

CONDITIONS OF APPROVAL

JAMES A. GILLHAM
DISTRICT SUPERVISOR

TITLE

DATE

Posted ID-1
6-18-82
New Loc.
API & BR

UNITED STATES
DEPARTMENT OF THE INTERIOR
GEOLOGICAL SURVEY

SUNDRY NOTICES AND REPORTS ON WELLS

(Do not use this form for proposals to drill or to deepen or plug back to a different reservoir. Use Form 9-331-C for such proposals.)

1. oil well ☐ gas well ☒ other

2. NAME OF OPERATOR

Yates Petroleum Corp.

3. ADDRESS OF OPERATOR

207 S. 4th Street Artesia, NM

4. LOCATION OF WELL (REPORT LOCATION CLEARLY. See space 17 below.)

AT SURFACE: 1650' FNL & 990' FEL

AT TOP PROD. INTERVAL:

AT TOTAL DEPTH: Same

16. CHECK APPROPRIATE BOX TO INDICATE NATURE OF NOTICE, REPORT, OR OTHER DATA

REQUEST FOR APPROVAL TO:

TEST WATER SHUT-OFF ☐

FRACTURE TREAT ☐

SHOOT OR ACIDIZE ☐

REPAIR WELL ☐

PULL OR ALTER CASING ☐

MULTIPLE COMPLETE ☐

CHANGE ZONES ☐

ABANDON* ☐

(other) Change of Location

SUBSEQUENT REPORT OF:

☐

☐

☐

☐

☐

☐

☐

☐

☐

17. DESCRIBE PROPOSED OR COMPLETED OPERATIONS (Clearly state all pertinent details, and give pertinent dates, including estimated date of starting any proposed work. If well is directionally drilled, give subsurface locations and measured and true vertical depths for all markers and zones pertinent to this work.)*

Change location from 990' FNL & 990' FEL TO 1650' FNL & 990' FEL

Due to BLM Request

Note PLAT

5. LEASE
NM 18483
6. IF INDIAN, ALLOTTEE OR TRIBE NAME

7. UNIT AGREEMENT NAME

8. FARM OR LEASE NAME
Morton "SZ" Fed

9. WELL NO.
2

10. FIELD OR WILDCAT NAME

Under Pecos Slope Abo

11. SEC., T., R., M., OR BLK. AND SURVEY OR AREA
Sec. 10-T8S-R25E

12. COUNTY OR PARISH
Chaves

13. STATE
NM

14. API NO.

15. ELEVATIONS (SHOW DF, KDB, AND WD)
36 36.3 GL

(NOTE: Report results of multiple completion or zone change on Form 9-330.)

OIL & GAS
U.S. GEOLOGICAL SURVEY
ROSWELL, NEW MEXICO

Subsurface Safety Valve: Manu. and Type _____ Set @ _____ Ft.

18. I hereby certify that the foregoing is true and correct

SIGNED

TITLE Reg Coordinator DATE 6-2-82

Orig. Sgd. GEORGE H. STEWART (This space for Federal or State office use)

APPROVED BY FOR
CONDITIONS OF APPROVAL, IF ANY:

JAMES A. GILLHAM
DISTRICT SUPERVISOR

TITLE _____ DATE _____

NEW MEXICO OIL CONSERVATION COMMISSION
WELL LOCATION AND ACREAGE DEDICATION PLAT

Form C-102
Supersedes C-128
Effective 1-1-65

All distances must be from the outer boundaries of the Section.

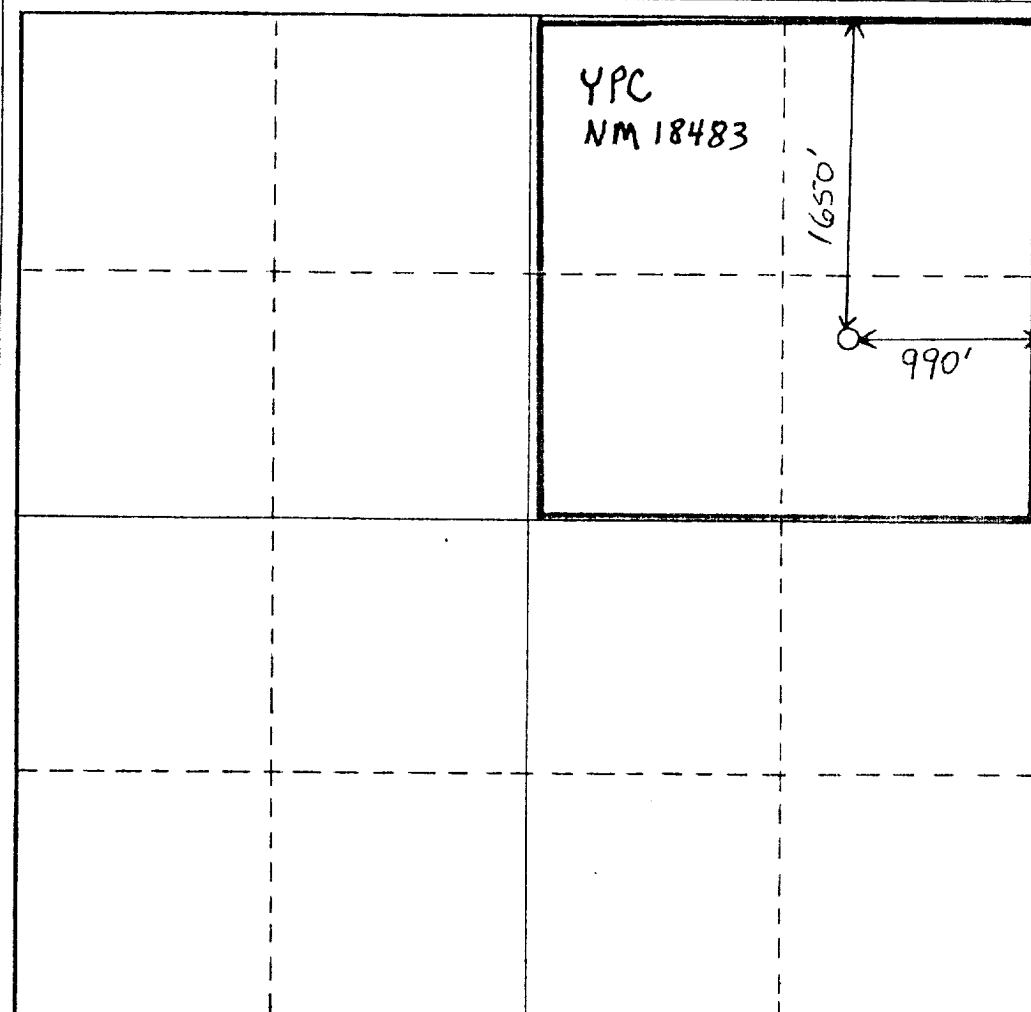
Operator Yates Petroleum Corp.		Lease Morton "SZ" Fed		Well No. 2
Unit Letter H	Section 10	Township 8 South	Range 25 East	County Chaves
Actual Footage Location of Well: 1650' feet from the North line and 990' feet from the East line				
Ground Level Elev. 3625.6	Producing Formation ABO	Pool CHAVES PECOS SLOPE ABO	Dedicated Acreage: 160 Acres	

1. Outline the acreage dedicated to the subject well by colored pencil or hatchure marks on the plat below.
2. If more than one lease is dedicated to the well, outline each and identify the ownership thereof (both as to working interest and royalty).
3. If more than one lease of different ownership is dedicated to the well, have the interests of all owners been consolidated by communitization, unitization, force-pooling, etc?

☐ Yes ☐ No If answer is "yes," type of consolidation _____

If answer is "no," list the owners and tract descriptions which have actually been consolidated. (Use reverse side of this form if necessary.) _____

No allowable will be assigned to the well until all interests have been consolidated (by communitization, unitization, forced-pooling, or otherwise) or until a non-standard unit, eliminating such interests, has been approved by the Commission.

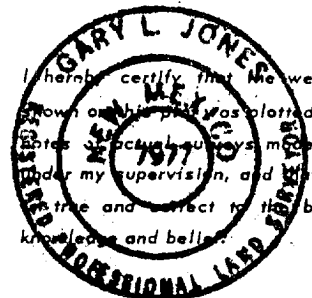


CERTIFICATION

I hereby certify that the information contained herein is true and complete to the best of my knowledge and belief.

Cy Cowan

Name
Cy Cowan
Position
Regulatory Coordinator
Company
YPC
Date
6-2-82



I hereby certify that the well location shown on this plat was plotted from field notes of actual surveys made by me or under my supervision, and that the same are true and correct to the best of my knowledge and belief.

Date Surveyed
6-1-82
Registered Professional Engineer and/or Land Surveyor
Gary L. Jones

Certificate No.
7977

NEW MEXICO OIL CONSERVATION COMMISSION
WELL LOCATION AND ACREAGE DEDICATION PLAT

Form C-102
Supersedes C-128
Effective 1-1-65

All distances must be from the outer boundaries of the Section.

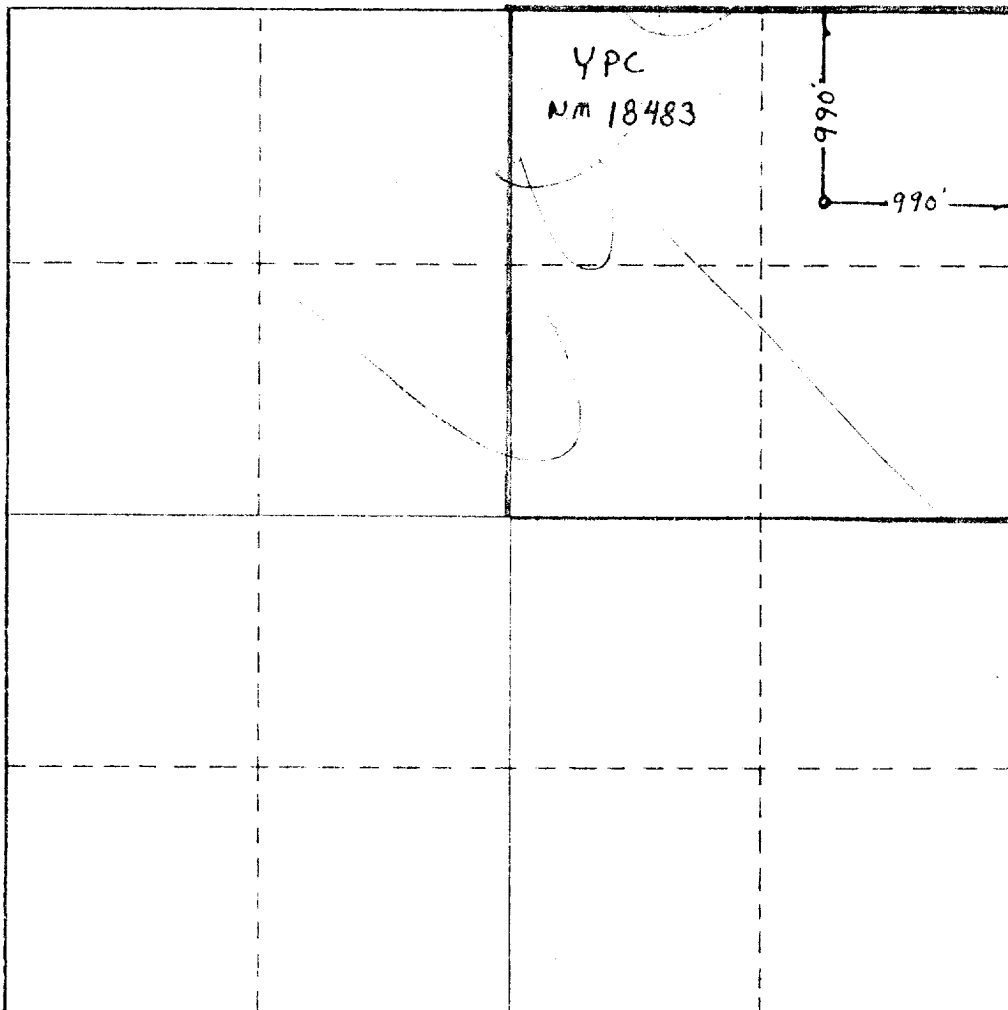
Operator: YATES PETROLEUM CORPORATION			Lease: Morton "SZ" Federal		Well No. 2
Unit Letter A	Section 10	Township 8 South	Range 25 East	County Chaves	
Actual Footage Location of Well: 990' feet from the North line and 990' feet from the East line					
Ground Level Elev. 3636.3'	Producing Formation Abo		Pool Unders : Pecos Slope Abo		Dedicated Acreage: 160 Acres

1. Outline the acreage dedicated to the subject well by colored pencil or hachure marks on the plat below.
2. If more than one lease is dedicated to the well, outline each and identify the ownership thereof (both as to working interest and royalty).
3. If more than one lease of different ownership is dedicated to the well, have the interests of all owners been consolidated by communitization, unitization, force-pooling, etc?

☐ Yes ☐ No If answer is "yes," type of consolidation _____

If answer is "no," list the owners and tract descriptions which have actually been consolidated. (Use reverse side of this form if necessary.) _____

No allowable will be assigned to the well until all interests have been consolidated (by communitization, unitization, forced-pooling, or otherwise) or until a non-standard unit, eliminating such interests, has been approved by the Commission.

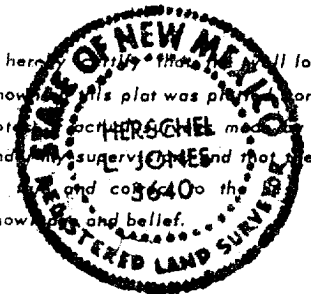


CERTIFICATION

I hereby certify that the information contained herein is true and complete to the best of my knowledge and belief.

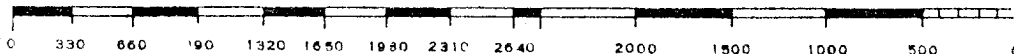
Name
Gliserio Rodriguez
Position
Regulatory Manager
Company
Yates Petroleum Corporation
Date
3/16/82

I hereby certify that the well location shown on this plat was plotted from field notes and checked by me or under my supervision and that the same is true and correct to the best of my knowledge and belief.



Date Surveyed
March 15, 1982
Registered Professional Engineer
and/or Land Surveyor

Certificate No.



YATES PETROLEUM CORPORATION

Morton "SZ" Federal #2990' FNL and 990' FELSection 10-T8S-R25EChaves County, New Mexico

In conjunction with Form 9-331C, Application for Permit to Drill subject well, Yates Petroleum Corporation submits the following ten items of pertinent information in accordance with USGS requirements.

1. The geologic surface formation is quarternary alluvium.
2. The estimated tops of geologic markers are as follows:

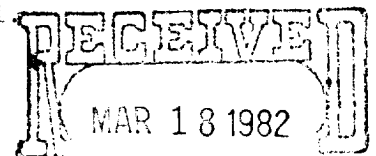
San Andres	360'
Glorieta	1470'
Fullerton	2915'
Abo	3630'
TD	4150'

3. The estimated depths at which anticipated water, oil or gas formations are expected to be encountered:

Water: approximately 225'

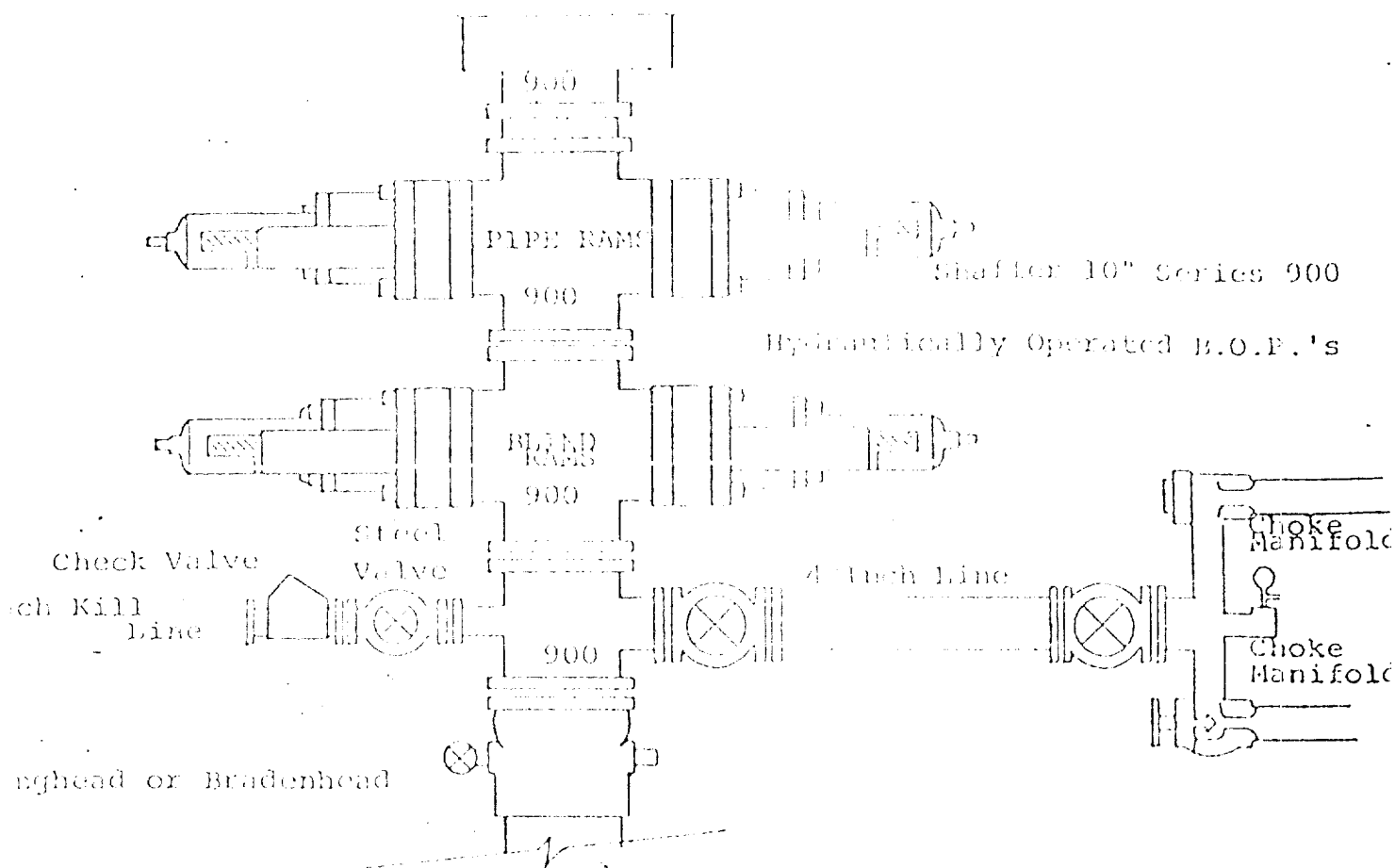
Oil or Gas: 3680'

4. Proposed Casing Program: See Form 9-331C.
5. Pressure Control Equipment: See Form 9-331C and Exhibit B.
6. Mud Program: See Form 9-331C.
7. Auxiliary Equipment: Kelly Cock; pit level indicators and flow sensor equipment;
sub with full-opening valve on floor, drill pipe connection.
8. Testing, Logging and Coring Program:
Samples: surface casing to TD
DST's: as warranted
Coring: none
Logging: CNL-FDC TD to casing w/GR-CNL on to surface and DLL from TD to casing w/
selected min. RxO.
9. No abnormal pressures or temperatures are anticipated.
10. Anticipated starting date: As soon as possible after approval.



OIL & GAS
U.S. GEOLOGICAL SURVEY
ROSWELL, NEW MEXICO

EXHIBIT B



FOLLOWING CONSTITUTE MINIMUM BLOWOUT PREVENTER REQUIREMENTS

- All preventers to be hydraulically operated with secondary manual controls installed prior to drilling out from under casing.
- Choke outlet to be a minimum of 4" diameter.
- Kill line to be of all steel construction of 2" minimum diameter.
- All connections from operating manifolds to preventers to be all steel, hole or tube a minimum of one inch in diameter.
- The available closing pressure shall be at least 15% in excess of that required with sufficient volume to operate the B.O.P.'s.
- All connections to and from preventer to have a pressure rating equivalent to that of the B.O.P.'s.
- Inside blowout preventer to be available on rig floor.
- Operating controls located a safe distance from the rig floor.
- Hole must be kept filled on trips below intermediate casing. Operator not responsible for blowouts resulting from not keeping hole full.
- B. P. float must be installed and used below zone of first gas intrusion.

- EXHIBIT C

YATES PETROLEUM CORPORATION

