

UNITED STATES  
DEPARTMENT OF THE INTERIOR  
GEOLOGICAL SURVEY

## APPLICATION FOR PERMIT TO DRILL, DEEPEN, OR PLUG BACK

## 1a. TYPE OF WORK

DRILL ☒DEEPEN ☐PLUG BACK ☐  
RECEIVED

## b. TYPE OF WELL

OIL  
WELL ☐GAS  
WELL ☒OTHER ☐SINGLE  
ZONE ☐MULTIPLE  
ZONE ☐

## 2. NAME OF OPERATOR

Yates Petroleum Corporation ✓

## 3. ADDRESS OF OPERATOR

207 S. 4th, Artesia, New Mexico 88210 O. C. D.

## 4. LOCATION OF WELL (Report location clearly and in accordance with any State regulations)

At surface 2310' FNL and 1850' FWL

At proposed prod. zone  
same

## 14. DISTANCE IN MILES AND DIRECTION FROM NEAREST TOWN OR POST OFFICE\*

Approximately 34 miles NNE of Roswell, New Mexico

## 15. DISTANCE FROM PROPOSED\*

LOCATION TO NEAREST  
PROPERTY OR LEASE LINE, FT. 2310'

(Also to nearest drlg. unit line, if any)

## 18. DISTANCE FROM PROPOSED LOCATION\*

TO NEAREST WELL, DRILLING, COMPLETED,  
OR APPLIED FOR, ON THIS LEASE, FT.

## 21. ELEVATIONS (Show whether DF, RT, GR, etc.)

3936.7' GL

## 23. PROPOSED CASING AND CEMENTING PROGRAM

SIZE OF HOLE	SIZE OF CASING	WEIGHT PER FOOT	SETTING DEPTH	QUANTITY OF CEMENT
14 3/4"	10 3/4"	40.5# J-55	850'	750 sx circulated
7 7/8"	4 1/2"	9.5#	TD	350 sx

We propose to drill and test the Abo and intermediate formations. Approximately 850' of surface casing will be set and cement circulated to shut off gravel and caving. If needed (lost circulation) 8 5/8" intermediate casing will be run to 1500' and cemented with enough cement calculated to tie back into the surface casing. If commercial, production casing will be run and cemented with adequate cover, perforate and stimulate as needed for production.

MUD PROGRAM: FW gel and LCM to 850', Brine to 3200', Drispak & starch to TD.

BOP PROGRAM: BOP's will be installed at the offset and tested daily.

GAS NOT DEDICATED. UNORTHODOX APPROVAL HAS BEEN REQUESTED FROM NMOCD.

IN ABOVE SPACE DESCRIBE PROPOSED PROGRAM: If proposal is to deepen or plug back, give data on present productive zone and proposed new productive zone. If proposal is to drill or deepen directionally, give pertinent data on subsurface locations and measured and true vertical depths. Give blowout preventer program, if any.

24.

SIGNED

TITLE Regulatory Manager

DATE 5/12/82

(This space for Federal or State office use)

(Orig. Sgd.) GEORGE M.

PERMIT NO.

APPROVAL DATE

APPROVED BY

TITLE

DATE

CONDITIONS OF APPROVAL, IF ANY:

JUN 15 1982  
JAMES A. GILMAN  
DISTRICT SUPERVISOR

Received ID-T  
PPT + NL Park  
6-25-82

NEW MEXICO OIL CONSERVATION COMMISSION  
WELL LOCATION AND ACREAGE DEDICATION PLAT

Form C-122  
Supersedes C-128  
Effective 1-1-65

All distances must be from the outer boundaries of the Section.

Operator <b>YATES PETROLEUM CORPORATION</b>			Lease <b>Lillie "RB" Federal</b>		Well No. <b>2</b>
Unit Letter <b>F</b>	Section <b>14</b>	Township <b>5 South</b>	Range <b>24 East</b>	County <b>Chaves</b>	
Actual Footage Location of Well:					
<b>2310'</b>		feet from the <b>North</b>		line and <b>1850'</b> feet from the <b>West</b> line	
Ground Level Elev. <b>3936.7'</b>	Producing Formation <b>Abo</b>	Pool <b>Pecos Slope Abo</b>		Dedicated Acreage: <b>160</b> Acres	

1. Outline the acreage dedicated to the subject well by colored pencil or hachure marks on the plat below.
2. If more than one lease is dedicated to the well, outline each and identify the ownership thereof (both as to working interest and royalty).
3. If more than one lease of different ownership is dedicated to the well, have the interests of all owners been consolidated by communitization, unitization, force-pooling, etc?

☐ Yes ☒ No If answer is "yes," type of consolidation to be communitized

If answer is "no," list the owners and tract descriptions which have actually been consolidated. (Use reverse side of this form if necessary.) \_\_\_\_\_

No allowable will be assigned to the well until all interests have been consolidated (by communitization, unitization, forced-pooling, or otherwise) or until a non-standard unit, eliminating such interests, has been approved by the Commission.

Lillie Yates NM-30881	Celeste Grynberg			
2310'				
Plains Radio	Lillie Yates NM-30881			
1850'	○			

THIS CHANGE REQUIRED BY BLM AND MMS

CERTIFICATION

I hereby certify that the information contained herein is true and complete to the best of my knowledge and belief.

*Gliserio Rodriguez*  
Name

Gliserio Rodriguez

Position

Regulatory Manager

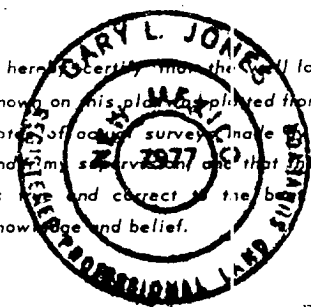
Company

Yates Petroleum Corp.

Date

5/12/82

I hereby certify that the well location shown on this plat was plotted from field notes of actual survey made by me or under my supervision and that the same is true and correct to the best of my knowledge and belief.



Date Surveyed

May 6, 1982

Registered Professional Engineer  
and/or Land Surveyor

Certificate No.

7977

0 330 660 990 1320 1650 1980 2310 2640 2000 1500 1000 500 0

YATES PETROLEUM CORPORATION  
Lillie "RB" Federal #2  
1780' FNL and 1780' FWL  
Section 14-T5S-R24E  
Chaves County, New Mexico

In conjunction with Form 9-331C, Application for Permit to Drill subject well, Yates Petroleum Corporation submits the following ten items of pertinent information in accordance with USGS requirements.

1. The geologic surface formation is sandy alluvium.

2. The estimated tops of geologic markers are as follows:

San Andres	550'
Glorieta	1520'
Fullerton	2899'
Abo	3503'
TD	4200'

3. The estimated depths at which anticipated water, oil or gas formations are expected to be encountered:

Water: approximately 250'-350'.

Oil or Gas: Abo 3520'.

4. Proposed Casing Program: See Form 9-331C.

5. Pressure Control Equipment: See Form 9-331C and Exhibit B.

6. Mud Program: See Form 9-331C.

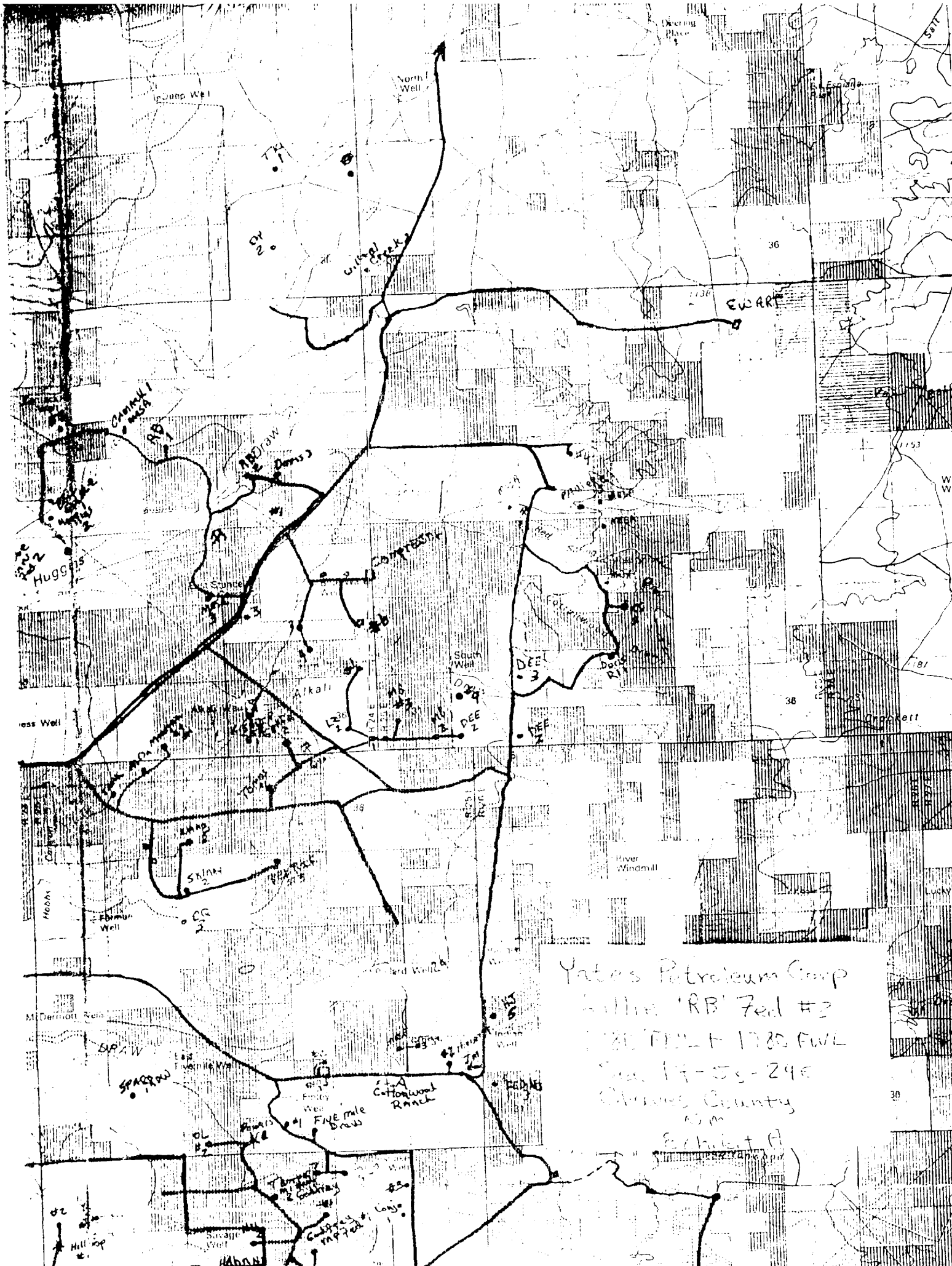
7. Auxiliary Equipment: Kelly Cock; pit level indicators and flow sensor equipment;  
sub with full-opening valve on floor, drill pipe connection.

8. Testing, Logging and Coring Program:

Samples: surface casing to TD  
DST's: as warranted  
Coring: none  
Logging: CNL-FDC TD to casing with GR-CNL on to surface and DLL from TD to casing.

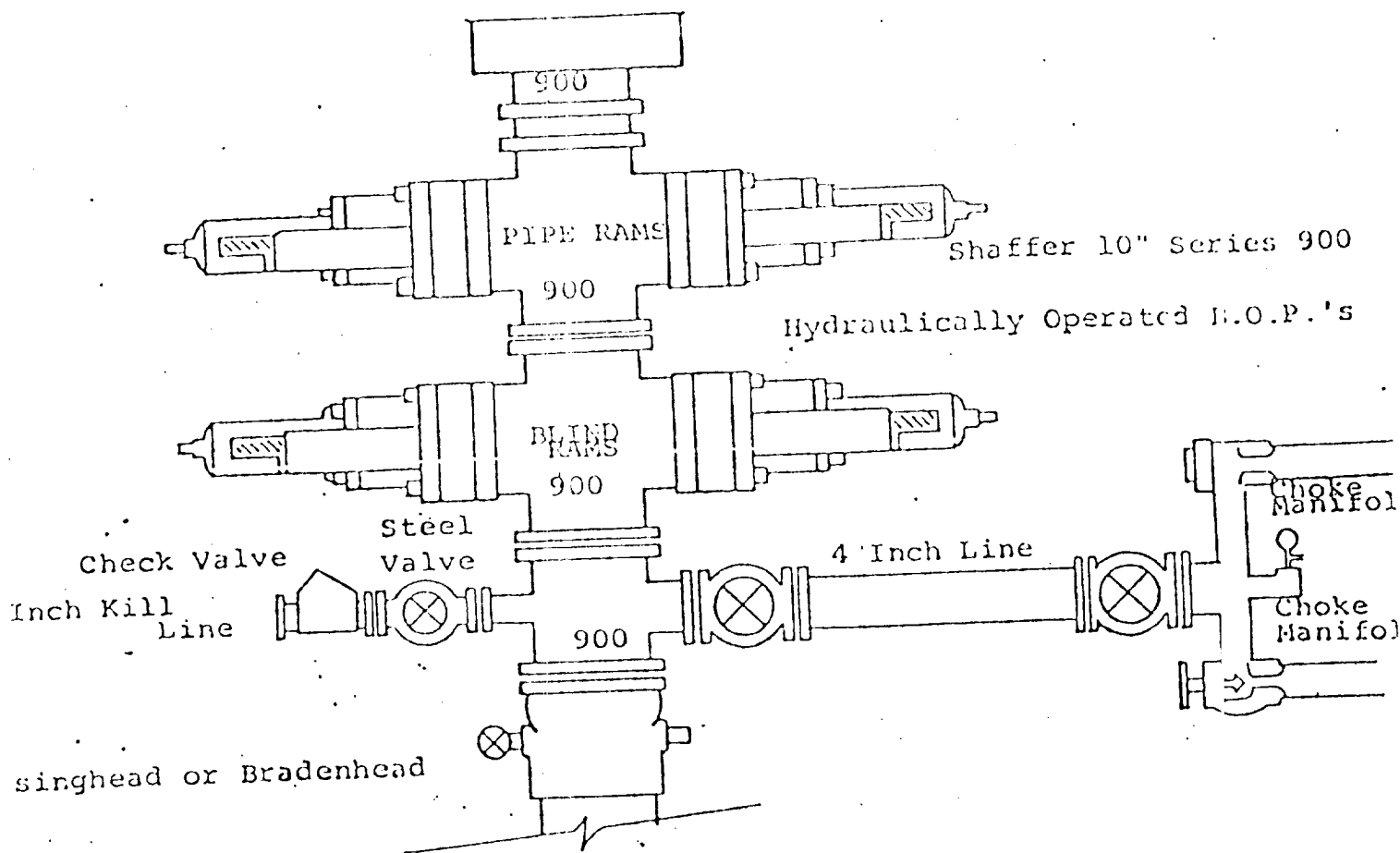
9. No abnormal pressures or temperatures are anticipated.

10. Anticipated starting date: As soon as possible after approval.



Yates Petroleum Corp  
Well 'RB' Fed #3  
1780 FWT - 1780 FWT  
Sec 14-55-24E  
Garfield County  
N.M.  
Exhibit A

# EXHIBIT B



## THE FOLLOWING CONSTITUTE MINIMUM BLOWOUT PREVENTER REQUIREMENTS

- All preventers to be hydraulically operated with secondary manual control installed prior to drilling out from under casing.
- Choke outlet to be a minimum of 4" diameter.
- Kill line to be of all steel construction of 2" minimum diameter.
- All connections from operating manifolds to preventers to be all steel.
- hole or tube a minimum of one inch in diameter.
- The available closing pressure shall be at least 15% in excess of that required with sufficient volume to operate the B.O.P.'s.
- All connections to and from preventer to have a pressure rating equivalent to that of the B.O.P.'s.
- Inside blowout preventer to be available on rig floor.
- Operating controls located a safe distance from the rig floor.
- Hole must be kept filled on trips below intermediate casing. Operator not responsible for blowouts resulting from not keeping hole full.
- D. P. float must be installed and used below zone of first gas intrusion

# EXHIBIT C

## YATES PETROLEUM CORPORATION

