

UNITED STATES
DEPARTMENT OF THE INTERIOR
GEOLOGICAL SURVEY

JUN 28 1982

30-005-61680
5. LEASE DESIGNATION AND SERIAL NO.

LC 067811-A

6. IF INDIAN, ALLOTTEE OR TRIBE NAME

7. UNIT AGREEMENT NAME

8. FARM OR LEASE NAME

Dale Federal

9. WELL NO.

17

10. FIELD AND POOL, OR WILDCAT

Wildcat

11. SEC., T., R., M., OR BLK.
AND SURVEY OR AREA

Sec.26-7S-26E

12. COUNTY OR PARISH 13. STATE

Chaves

N.M.

1a. TYPE OF WORK

DRILL ☒DEEPEN ☐PLUG BACK ☐

b. TYPE OF WELL

OIL
WELL ☐GAS
WELL ☒

OTHER

SINGLE
ZONE ☒MULTIPLE
ZONE ☐

2. NAME OF OPERATOR

BERGE EXPLORATION, INC.

3. ADDRESS OF OPERATOR

7100 North Broadway, Ste.2-L, Denver, CO 80221

4. LOCATION OF WELL (Report location clearly and in accordance with any State requirements.*)

At surface

1980'FSL 660'FEL Sec.26-7S-26E

At proposed prod. zone

Same

14. DISTANCE IN MILES AND DIRECTION FROM NEAREST TOWN OR POST OFFICE*

26 Miles Northeast of Roswell, New Mexico

15. DISTANCE FROM PROPOSED*

LOCATION TO NEAREST
PROPERTY OR LEASE LINE, FT.
(Also to nearest drlg. unit line, if any)

660'

16. NO. OF ACRES IN LEASE

600

17. NO. OF ACRES ASSIGNED
TO THIS WELLE $\frac{1}{2}$ Sec.26 - 320 Ac.18. DISTANCE FROM PROPOSED LOCATION*
TO NEAREST WELL, DRILLING, COMPLETED,
OR APPLIED FOR, ON THIS LEASE, FT.

466.7'

19. PROPOSED DEPTH

6200' Pre-Cambrian

20. ROTARY OR CABLE TOOLS

Rotary

21. ELEVATIONS (Show whether DF, RT, GR, etc.)

3841' GL

22. APPROX. DATE WORK WILL START*

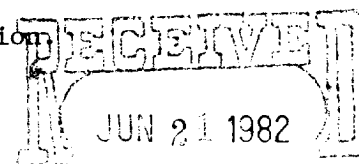
As Soon As Possible

23. PROPOSED CASING AND CEMENTING PROGRAM

SIZE OF HOLE	SIZE OF CASING	WEIGHT PER FOOT	SETTING DEPTH	QUANTITY OF CEMENT
11"	8 5/8"	32# K-55	1000'	Circulate To Surface
6 3/4"	4 1/2"	10.5# K-55	TD	400 sx
				(To 200' above top of abo)

Propose to drill to Pre-Cambrian at about 6200'. Evaluate favorable zones. Set and cement casing through the deepest zone that appears commercial. Perform normal completion by selectively perforating, stimulating and testing.

See attached "Supplementary Drilling Data" and BOP information



The gas is not dedicated.

OIL & GAS
U.S. GEOLOGICAL SURVEY
ROSWELL, NEW MEXICO

IN ABOVE SPACE DESCRIBE PROPOSED PROGRAM: If proposal is to deepen or plug back, give data on present productive zone and proposed new productive zone. If proposal is to drill or deepen directionally, give pertinent data on subsurface locations and measured and true vertical depths. Give blowout preventer program, if any.

24.

SIGNED	<i>Jerry H. Long</i>	TITLE	Agent	DATE	June 21, 1982
(This space for Federal or State office use)					
PERMIT NO.	(Orig. Sgd.) GEORGE H. STEWART	APPROVAL DATE			
JUN 25 1982					
APPROVED BY	<i>JAMES H. HANNA</i>	TITLE		DATE	
CONDITIONS OF APPROVAL: IN ANY CASE, A DISTRICT SURVEY SUPERVISOR					

*See Instructions On Reverse Side

U. S. CONSERVATION SERVICE

P. O. BOX 2088

Form C-102
Revised 10-1-78

STATE OF NEW MEXICO
ENERGY AND MINERALS DEPARTMENT

SANTA FE, NEW MEXICO 87501

All distances must be from the outer boundaries of the Section.

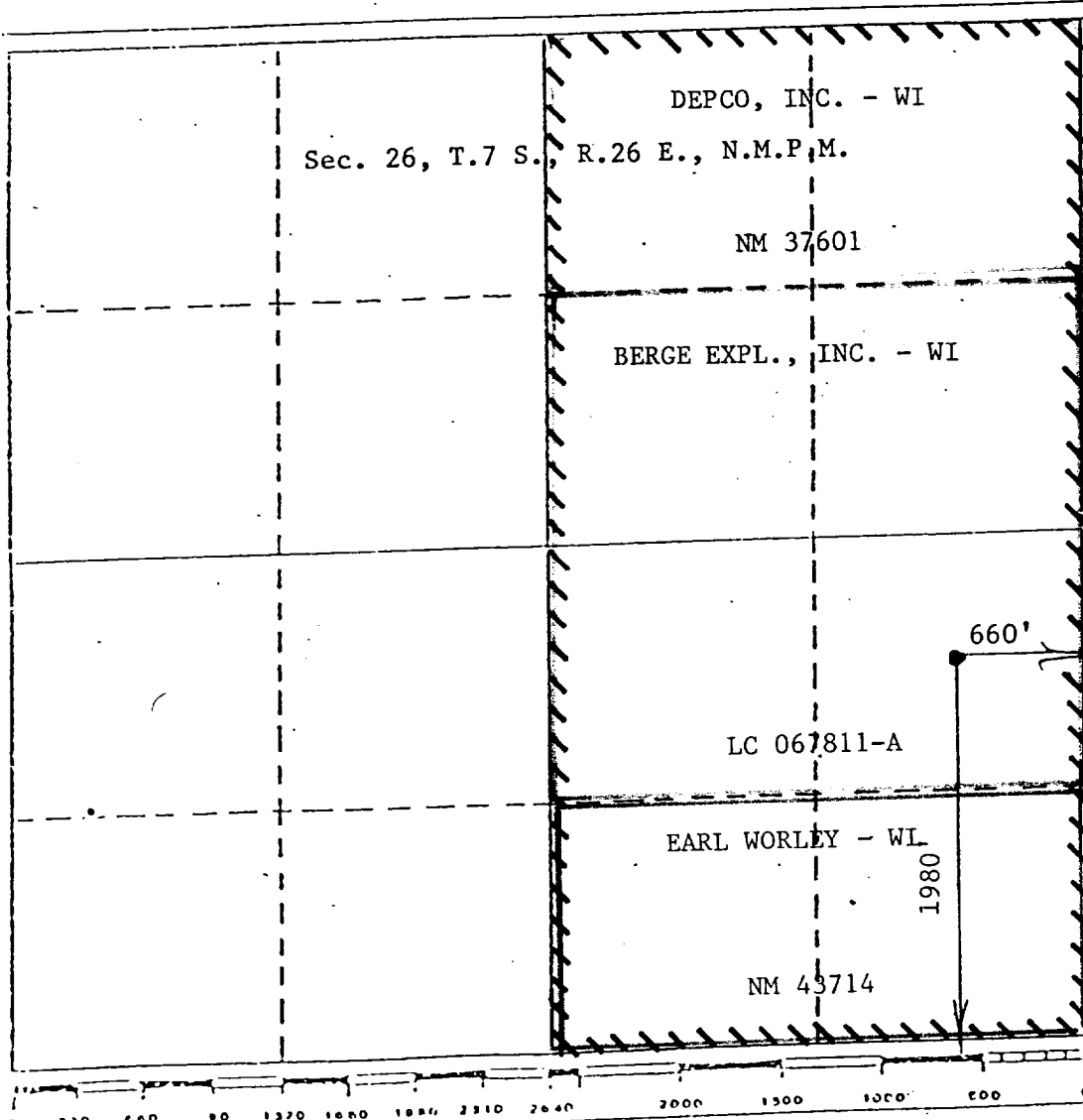
Operator Berge Exploration, Inc.		Lease Dale Federal		Well No. 17
Unit Letter I	Section 26	Township 7 South	Range 26 East	County chaves
Actual Postage Location of Well: 1980 feet from the South line and 660 feet from the East line Sec. 26				
Ground Level Elev. 3841	Producing Formation Granite Wash	Pool Wildcat	Dedicated Acreage: 1/4 - 320 Acres	

1. Outline the acreage dedicated to the subject well by colored pencil or hatchure marks on the plat below.
2. If more than one lease is dedicated to the well, outline each and identify the ownership thereof (both as to working interest and royalty).
3. If more than one lease of different ownership is dedicated to the well, have the interests of all owners been consolidated by communitization, unitization, force-pooling, etc?

☐ Yes ☐ No If answer is "yes," type of consolidation Communitization Pending

If answer is "no," list the owners and tract descriptions which have actually been consolidated. (Use reverse side of this form if necessary.)

No allowable will be assigned to the well until all interests have been consolidated (by communitization, unitization, forced-pooling, or otherwise) or until a non-standard unit, eliminating such interests, has been approved by the Division.



CERTIFICATION

I hereby certify that the information contained herein is true and complete to the best of my knowledge and belief.

Jerry H. Long
Name
JERRY W. LONG

Position
Agent

Company
BERGE EXPLORATION, INC.

Date
June 21, 1982

I hereby certify that the well location shown on this plat was plotted from field notes of actual surveys made by me or under my supervision, and that the same is true and correct to the best of my knowledge and belief.

JOHN D. JAQUES
Date Surveyed
June 16, 1982
Registered Professional Engineer
and Professional Surveyor
6290
John D. Jaques, P.E. & L.S.
Certificate No. **6290**

SUPPLEMENTAL DRILLING DATA

BERGE EXPLORATION, INC.
No.17 Dale Federal
1980'/S 660'/E Sec.26-7S-26E
Chaves County, N.M.

LC 057811-A

The following items supplement Form 9-331C in accordance with instructions contained in NTL-6.

1. SURFACE FORMATION: Artesia Group of the Permian System

2. ESTIMATED TOPS OF GEOLOGIC MARKERS:

San Andres	915'	Wolfcamp	4830'
Yeso	2080'	Pre-Cambrian	6200'
Abo	4175'		

3. ESTIMATED DEPTHS TO WATER, OIL OR GAS FORMATIONS:

Fresh Water	- Surface to 800'
Oil	- 915' in San Andres
Gas	- 4200' to total depth

4. PROPOSED CASING PROGRAM:

8 5/8" Casing - Set at about 1000' and cemented to the surface to isolate the San Andres formation and protect shallower fresh water zones.

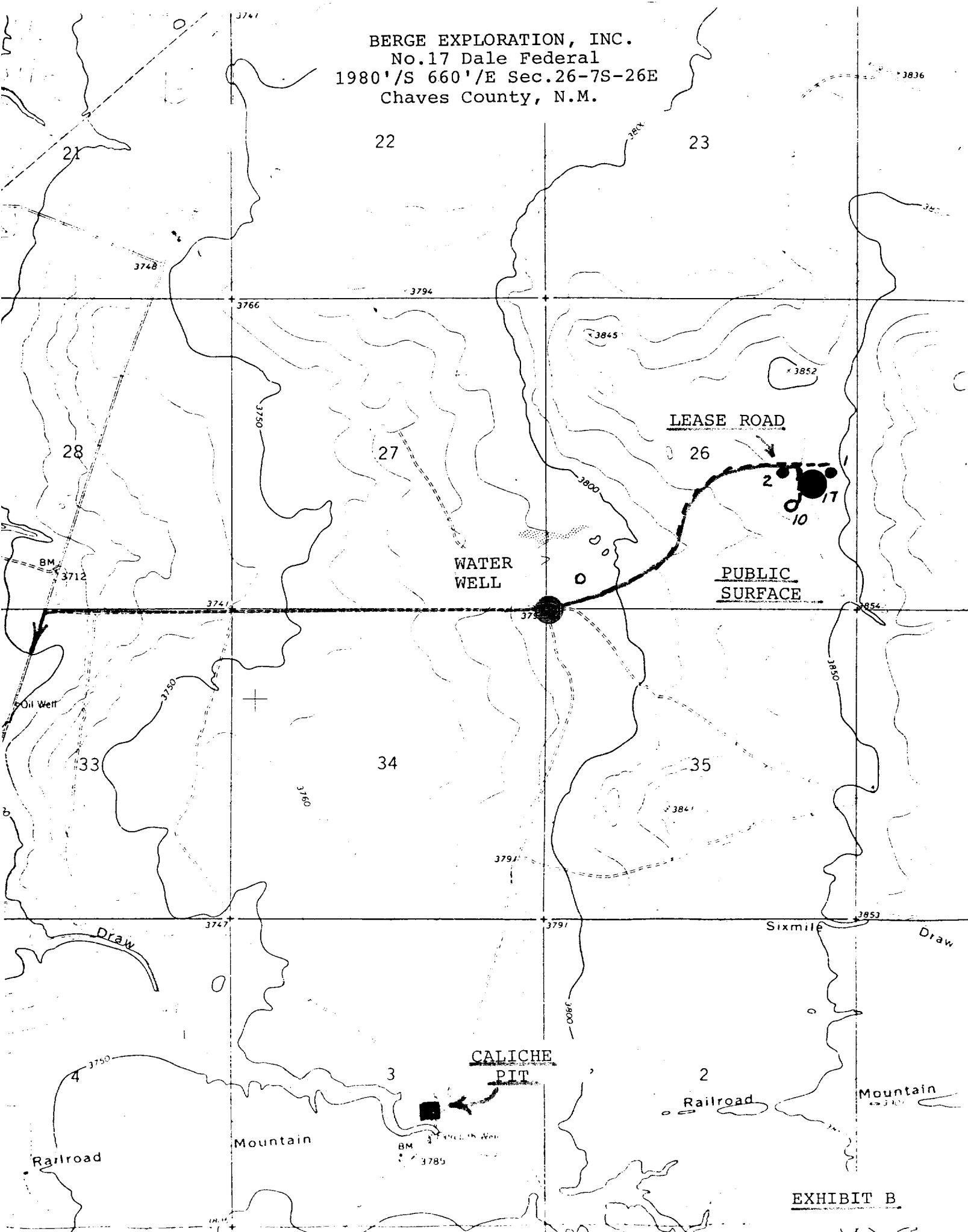
4 1/2" Casing - Set thru the lowest potentially commercial zone and cemented back to 200' above the top of the Abo to isolate all oil and gas zones.

5. PRESSURE CONTROL EQUIPMENT: Blowout preventer stack will consist of at least a double-ram blowout preventer rated to 5000# WP. A sketch of the BOP is attached.

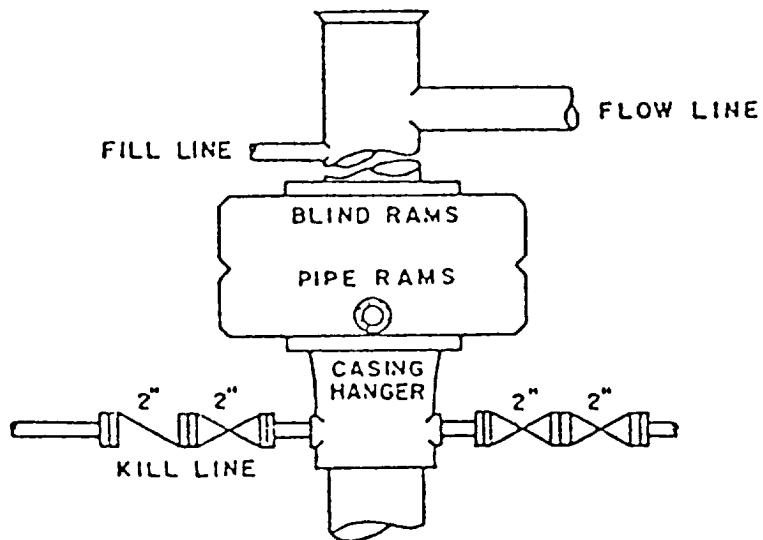
6. CIRCULATING MEDIUM: Natural fresh water mud will be used as the circulating medium to about 2000'. The lower portion of the hole will be drilled using a 10#/Gal. brine mud system. Additives will be used as recommended by the Mud Engineer.

7. AUXILIARY EQUIPMENT: Full-opening kelly cock, to fit the drill string in use, will be kept on the rig floor at all times.
8. TESTING, LOGGING AND CORING PROGRAM:
- Samples: Run samples at 10' intervals from Surface to TD.
 - DST: Test zones as recommended by wellsite Geologist.
 - Logging: Dual Laterolog and Compensated Neutron/Density log with Gamma Ray and Caliper will be run from surface casing shoe to TD.
 - Coring: None planned
9. ABNORMAL PRESSURES, TEMPERATURES OR HYDROGEN SULFIDE: None anticipated. Maximum bottom-hole pressure should not exceed 3000 psi.
10. ANTICIPATED STARTING DATE: Drilling will commence as soon as possible. Drilling should be completed within 30 days. Completion operations (perforations and stimulation) will follow drilling operations.

BERGE EXPLORATION, INC.
No.17 Dale Federal
1980'/S 660'/E Sec.26-7S-26E
Chaves County, N.M.



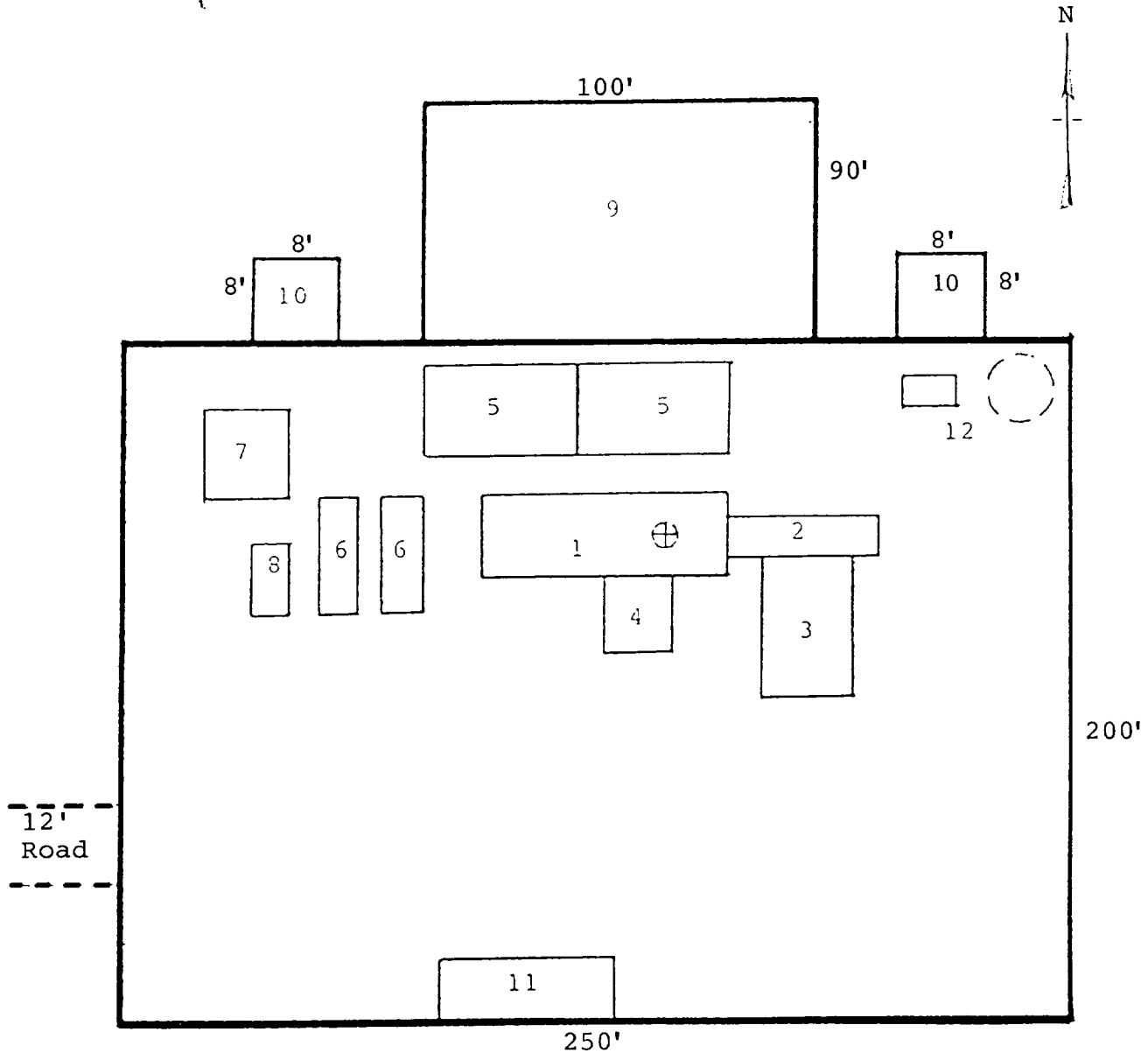
BERGE EXPLORATION, INC.
No.17 Dale Federal
1980'/S 660'/E Sec.26-7S-26E
Chaves County, N.M.



BOP STACK

5000# WP DOUBLE-RAM
RAMS OPERATED DAILY

BERGE EXPLORATION, INC.
 No.17 Dale Federal
 1980'/S 660'/E Sec.26-7S-26E
 Chaves County, N.M.



.RIG LAYOUT

- | | |
|-----------------|---------------------------|
| 1. Substructure | 7. Water Tank |
| 2. Catwalk | 8. Light Plant |
| 3. Pipe Rack | 9. Reserve Pit |
| 4. Doghouse | 10. Trash Pit |
| 5. Mud Pits | 11. Trailer House |
| 6. Mud Pumps | 12. Production Facilities |