

SF/Jul

UNITED STATES  
DEPARTMENT OF THE INTERIOR  
GEOLOGICAL SURVEY

**SUNDRY NOTICES AND REPORTS ON WELLS**

(Do not use this form for proposals to drill or to deepen or plug back to a different reservoir. Use Form 9-331-C for such proposals.)

1. oil well ☒ gas well ☐ other ☐

2. NAME OF OPERATOR  
Berge Exploration, Inc.

RECEIVED  
JUN 29 1982  
O. C. D.  
ARTESIA, OFFICE

3. ADDRESS OF OPERATOR  
7100 N. Broadway, 2-L, Denver, CO 80221

4. LOCATION OF WELL (REPORT LOCATION CLEARLY. See space 17 below.)  
2310 FEL x 1661 FSL  
AT SURFACE: 2310  
AT TOP PROD. INTERVAL: (as above)  
AT TOTAL DEPTH: (as above)

16. CHECK APPROPRIATE BOX TO INDICATE NATURE OF NOTICE, REPORT, OR OTHER DATA

REQUEST FOR APPROVAL TO:

TEST WATER SHUT-OFF ☐  
FRACTURE TREAT ☐  
SHOOT OR ACIDIZE ☐  
REPAIR WELL ☐  
PULL OR ALTER CASING ☐  
MULTIPLE COMPLETE ☐  
CHANGE ZONES ☐  
ABANDON\* ☐  
(other) Surface casing

SUBSEQUENT REPORT OF:

☐  
☐  
☐  
☐  
☐  
☐  
☐  
☐  
☐

(NOTE: Report results of multiple completion or zone change on Form 9-330.)

17. DESCRIBE PROPOSED OR COMPLETED OPERATIONS (Clearly state all pertinent details, and give pertinent dates, including estimated date of starting any proposed work. If well is directionally drilled, give subsurface locations and measured and true vertical depths for all markers and zones pertinent to this work.)\*

Ran 5 joints 8 5/8, 20# csd. to 200.45 GL with 65 sax class c, 2% CCI cement.  
Circ. to sfc. Plug down @ 8:15 p.m., 6/16/82.

RECEIVED  
JUN 21 1982

OIL & GAS  
U.S. GEOLOGICAL SURVEY  
ROSWELL, NEW MEXICO  
Set @ \_\_\_\_\_ Ft.

Subsurface Safety Valve: Manu. and Type \_\_\_\_\_

18. I hereby certify that the foregoing is true and correct

SIGNED Wesley B. Berry TITLE Vice President DATE \_\_\_\_\_

APPROVED BY CS TITLE \_\_\_\_\_ DATE \_\_\_\_\_  
CONDITIONS OF APPROVAL JUN 28 1982  
(This space for Federal or State office use)

U.S. GEOLOGICAL SURVEY  
ROSWELL, NEW MEXICO

See Instructions on Reverse Side

UNITED STATES  
DEPARTMENT OF THE INTERIOR  
GEOLOGICAL SURVEY30-005-61685  
LEASE DESIGNATION AND SERIAL NO.

LC-067811A

6. IF INDIAN, ALLOTTEE OR PRIZE NAME

7. UNIT AGREEMENT NAME

8. FARM OR LEASE NAME

Dale-Federal

9. WELL NO.

11-Y

10. FIELD AND POOL, OR WILDCAT

Leslie Spring S.A.

11. SEC., T., R., M., OR S.E.  
AND SURVEY OR AREA

26, T7S, R26E

12. COUNTY OR PARISH 13. STATE

Chaves

N.M.

## 1a. TYPE OF WORK

DRILL ☐DEEPEN ☐PLUG BACK ☐

RECEIVED

## b. TYPE OF WELL

OIL  
WELL ☒GAS  
WELL ☐OTHER ☐SINGLE  
ZONE ☒MULTIPLE  
ZONE ☐

## 2. NAME OF OPERATOR

Berge Exploration, Inc.

JUL 6 1982

## 3. ADDRESS OF OPERATOR

7100 N. Broadway, Suite 2-L, Denver, CO 80221 O. C. D.

## 4. LOCATION OF WELL (Report location clearly and in accordance with any State requirements)

At surface

2308' FEL &amp; 1661' FSL

At proposed prod. zone

SAME

## 14. DISTANCE IN MILES AND DIRECTION FROM NEAREST TOWN OR POST OFFICE\*

30 mi. NE of Roswell, New Mexico

## 15. DISTANCE FROM PROPOSED\*

LOCATION TO NEAREST  
PROPERTY OR LEASE LINE, FT.  
(Also to nearest drig. unit line, if any)

## 16. NO. OF ACRES IN LEASE

320

## 17. NO. OF ACRES ASSIGNED

20

18. DISTANCE FROM PROPOSED LOCATION\*  
TO NEAREST WELL, DRILLING, COMPLETED,  
OR APPLIED FOR, ON THIS LEASE, FT.

## 19. PROPOSED DEPTH

2200

## 20. ROTARY OR CABLE TOOLS

Rotary - Air

## 21. ELEVATIONS (Show whether DF, RT, GR, etc.)

3812.7' GR

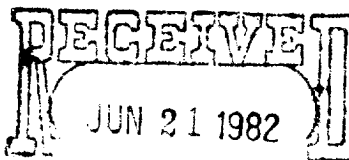
## 22. APPROX. DATE WORK WILL START\*

## 23.

## PROPOSED CASING AND CEMENTING PROGRAM

SIZE OF HOLE	SIZE OF CASING	WEIGHT PER FOOT	SETTING DEPTH	QUANTITY OF CEMENT
11"	8 5/8"	24#	200'	Circ. to sfc.
6 3/4"	4 1/2"	9.5#	2200'	Isolate all wtr & gas zones

1. Drill to 200', set 200' 8 5/8 sfc. csq. w/75 sax cement
2. Drill to 2200', set 2200' 4 1/2 csg, w/200 sax cement (from TD to 600' above top of San Andres)
3. No blowout prevention program is planned (as per instructions)
4. No mud program is planned



IN ABOVE SPACE DESCRIBE PROPOSED PROGRAM: If proposal is to deepen or plug back, give data on present productive zone and proposed new productive zone. If proposal is to drill or deepen directionally, give pertinent data on subsurface locations and measured and true vertical depths. Give blowout preventer program, if any.

## 24.

SIGNED

TITLE

Vice President

DATE

(This space for Federal or State office use)

PERMIT NO.

(Orig. Sgd.) GEORGE H. STEWART  
JUN 25 1982

APPROVAL DATE

APPROVED BY

CONDITIONS OF APPROVAL, IF ANY  
JAMES A. GILHAM  
DISTRICT SUPERVISOR

TITLE

DATE

\*See Instructions On Reverse Side

Partial ID-1  
API + NL Bank  
7-9-82

NEW MEXICO OIL CONSERVATION COMMISSION  
WELL LOCATION AND ACREAGE DEDICATION PLAT

Form No. 1  
Supplement C-124  
Effective 1/1/81

All distances must be from the outer boundaries of the Section

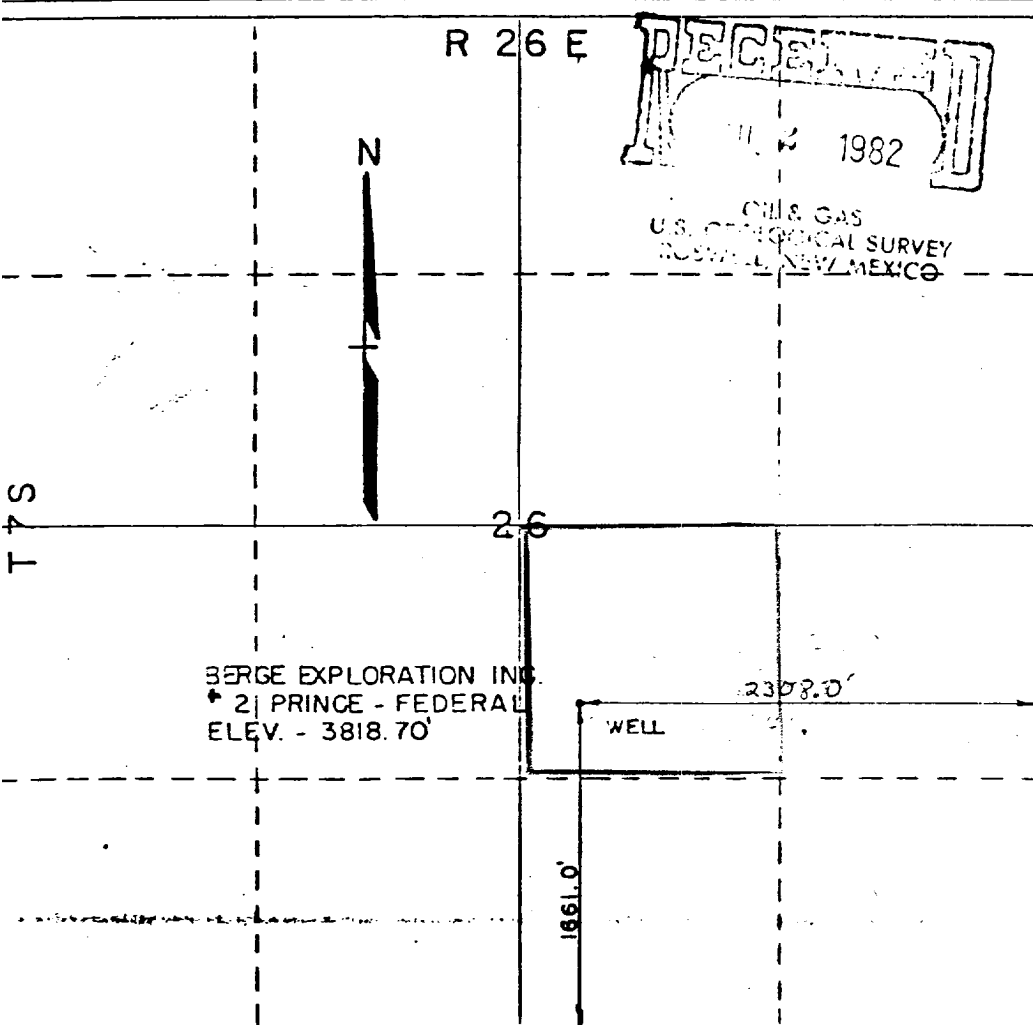
Operator <b>Berge Exploration, Inc.</b>			Index <b>Fed. NM-067811A</b>		<b>DALE</b>		Well No. <b>11-Y</b>
Unit Letter <b>J</b>	Section <b>26</b>	Township <b>7-S</b>	Range <b>26-E</b>	County <b>Chaves</b>			
Actual Footage Location of Well:							
<b>2308.00</b> feet from the		<b>EAST</b> line and		<b>1661</b> feet from the		<b>SOUTH</b> line	
Ground Level Elev. <b>3818.70</b>	Producing Formation <b>San Andres</b>		Well <b>Leslie Spring - San Andres</b>			Dedicated Acreage: <b>20 40</b> Acres	

1. Outline the acreage dedicated to the subject well by colored pencil or hatchure marks on the plat below.
2. If more than one lease is dedicated to the well, outline each and identify the ownership thereof (both as to working interest and royalty).
3. If more than one lease of different ownership is dedicated to the well, have the interests of all owners been consolidated by communitization, unitization, force-pooling, etc?

☐ Yes ☐ No If answer is "yes," type of consolidation N/A

If answer is "no," list the owners and tract descriptions which have actually been consolidated. (Use reverse side of this form if necessary.)

No allowable will be assigned to the well until all interests have been consolidated (by communitization, unitization, forced-pooling, or otherwise) or until a non-standard unit, eliminating such interests, has been approved by the Commission.



CERTIFICATION

I hereby certify that the information contained herein is true and complete to the best of my knowledge and belief.

*Verne P. Berry*  
Name  
*Vice President*  
Position  
*Berge Exploration Inc*  
*10/6/1981*  
Date

I hereby certify that the well location shown on this plat was plotted from field notes of actual surveys made by me or under my supervision, and that the same is true and correct to the best of my knowledge and belief.

October 26, 1981

Date Surveyed  
*Thomas T. Mann*  
Registered Professional Engineer  
and a Land Surveyor  
**Thomas T. Mann, P.E. & L.S.**  
**N.M. License No. 277**  
Certificate No.