

Drawer DD

Artesia NM

UNITED STATES
DEPARTMENT OF THE INTERIOR

GEOLOGICAL SURVEY

APPLICATION FOR PERMIT TO DRILL, DEEPEN, OR PLUG BACK

1a. TYPE OF WORK

DRILL ☒DEEPEN ☐PLUG BACK ☐

b. TYPE OF WELL

OIL
WELL ☐GAS
WELL ☒

OTHER

SINGLE
ZONE ☐MULTIPLE
ZONE ☐

2. NAME OF OPERATOR

Yates Petroleum Corporation

3. ADDRESS OF OPERATOR

207 S. 4th, Artesia, New Mexico 88210

4. LOCATION OF WELL (Report location clearly and in accordance with any State requirements.)

At surface

1980' FSL and 660' FEL

At proposed prod. zone

same

14. DISTANCE IN MILES AND DIRECTION FROM NEAREST TOWN OR POST OFFICE*

Approximately 30 miles NNE of Roswell, NM

15. DISTANCE FROM PROPOSED*

LOCATION TO NEAREST

PROPERTY OR LEASE LINE, FT.

(Also to nearest drlg. unit line, if any)

660'

16. NO. OF ACRES IN LEASE

640

17. NO. OF ACRES ASSIGNED

TO THIS WELL

160

18. DISTANCE FROM PROPOSED LOCATION*

TO NEAREST WELL, DRILLING, COMPLETED,

OR APPLIED FOR, ON THIS LEASE, FT.

19. PROPOSED DEPTH

4100'

20. ROTARY OR CABLE TOOLS

Rotary

21. ELEVATIONS (Show whether DF, RT, GR, etc.)

3720.1' GL

22. APPROX. DATE WORK WILL START*

ASAP

23.

PROPOSED CASING AND CEMENTING PROGRAM

SIZE OF HOLE	SIZE OF CASING	WEIGHT PER FOOT	SETTING DEPTH	QUANTITY OF CEMENT
14 3/4"	10 3/4"	48# J-55	Appr. 820'	540 sx circulated
7 7/8"	4 1/2"	9.5#	TD	350 sx

We propose to drill and test the Abo and intermediate formations. Approximately 820' of surface casing will be set and cement circulated to shut off gravel and caving. If needed (lost circulation) 8 5/8" intermediate casing will be run to 1500' and cemented with enough cement calculated to tie back into the surface casing. If commercial, production casing will be run and cemented with adequate cover, perforated and stimulated as needed for production.

MUD PROGRAM: FW gel and LCM to 820', KCL & starch to 3500', Brine & KCL water to TD.

BOP PROGRAM: BOP's will be installed at the offset and tested daily.

GAS NOT DEDICATED.

IN ABOVE SPACE DESCRIBE PROPOSED PROGRAM: If proposal is to deepen or plug back, give data on present productive zone and proposed new productive zone. If proposal is to drill or deepen directionally, give pertinent data on subsurface locations and measured and true vertical depths. Give blowout preventer program, if any.

24.

SIGNED

TITLE Regulatory Coordinator DATE 5/11/82

(This space for Federal or State office use)

(Orig. Sgd.) GEORGE H. STEWART

PERMIT NO.

JUN 30 1982

APPROVAL DATE

JUN 17 1982

APPROVED BY

CONDITIONS OF APPROVAL, IF ANY:

OIL & GAS
U.S. GEOLOGICAL SURVEY
ROSWELL, NEW MEXICO

NEW MEXICO OIL CONSERVATION COMMISSION
WELL LOCATION AND ACREAGE DEDICATION PLAT

Form C-103
Supersedes C-128
Effective 1-1-65

All distances must be from the outer boundaries of the Section.

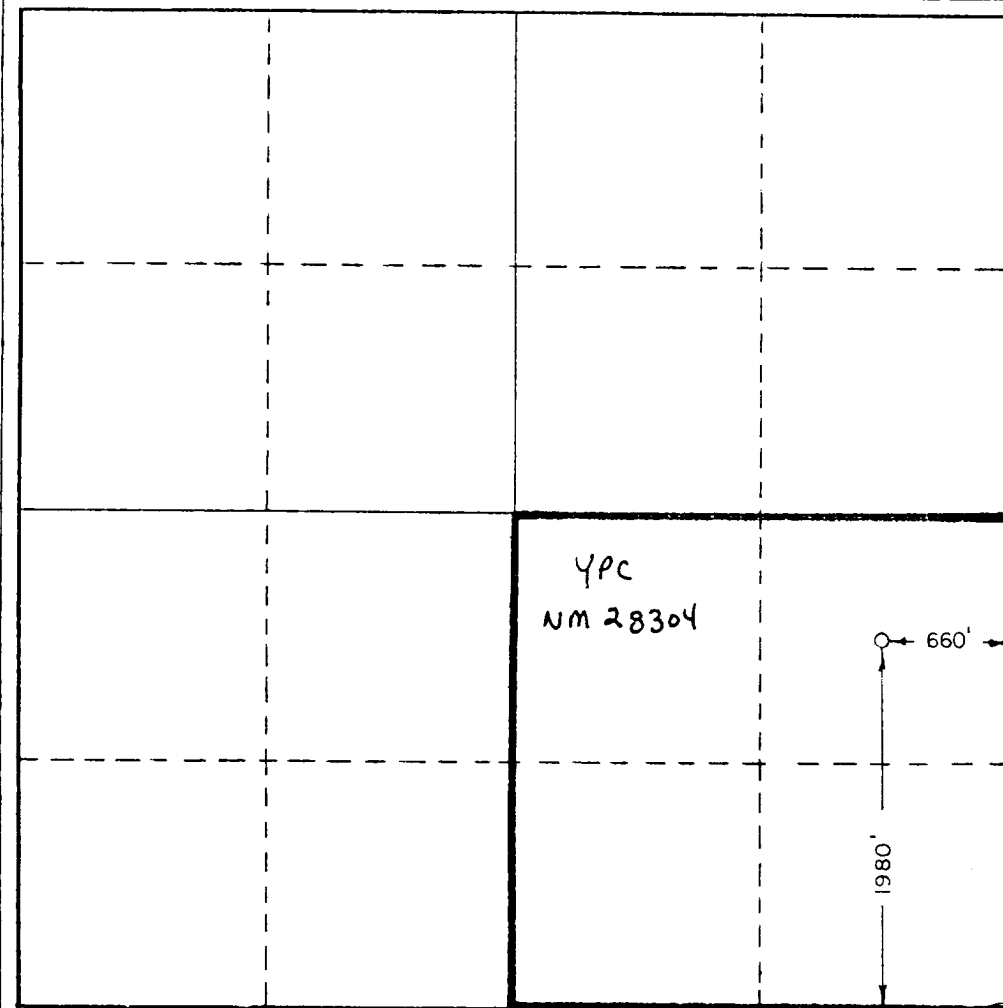
Operator YATES PETROLEUM CORPORATION			Lease Albitus "TH" Federal		Well No. 4
Unit Letter I	Section 21	Township 7 South	Range 25 East	County Chaves	
Actual Footage Location of Well:					
1980 feet from the South line and 660 feet from the East line					
Ground Level Elev. 3720.1'	Producing Formation Abo		Pool Under Pecos Slope Abo		Dedicated Acreage: 160 Acres

1. Outline the acreage dedicated to the subject well by colored pencil or hatchure marks on the plat below.
2. If more than one lease is dedicated to the well, outline each and identify the ownership thereof (both as to working interest and royalty).
3. If more than one lease of different ownership is dedicated to the well, have the interests of all owners been consolidated by communitization, unitization, force-pooling, etc?

☐ Yes ☐ No If answer is "yes," type of consolidation _____

If answer is "no," list the owners and tract descriptions which have actually been consolidated. (Use reverse side of this form if necessary.) _____

No allowable will be assigned to the well until all interests have been consolidated (by communitization, unitization, forced-pooling, or otherwise) or until a non-standard unit, eliminating such interests, has been approved by the Commission.



CERTIFICATION

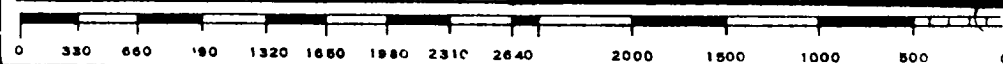
I hereby certify that the information contained herein is true and complete to the best of my knowledge and belief.

Gliserio Rodriguez

Name
Gliserio Rodriguez
Position
Regulatory Manager
Company
Yates Petroleum Corporation
Date
3/8/82

GARY L. JONES
I hereby certify that the well location shown on this plat was plotted from field notes of accurate surveys made by me or under my supervision, and that the same is true and correct to the best of my knowledge and belief.

Date Surveyed
3/6/82
Registered Professional Engineer and/or Land Surveyor
Dan Jones
Certificate No.
7977



YATES PETROLEUM CORPORATION
Wellbore "TH" Federal #4
1980' FSL and 660' FEL
Section 21-T7S-R25E
Chaves County, New Mexico

In conjunction with Form 9-331C, Application for Permit to Drill subject well, Yates Petroleum Corporation submits the following ten items of pertinent information in accordance with USGS requirements.

1. The geologic surface formation is sandy residium.

2. The estimated tops of geologic markers are as follows:

San Andres	370'
Gloreita	1397'
Fullerton	2855'
Abo	3540'
TD	4100'

3. The estimated depths at which anticipated water, oil or gas formations are expected to be encountered:

Water: Approximately 250'

Oil or Gas: Abo 3580'

4. Proposed Casing Program: See Form 9-331C.

5. Pressure Control Equipment: See Form 9-331C and Exhibit B.

6. Mud Program: See Form 9-331C.

7. Auxiliary Equipment: Kelly Cock; pit level indicators and flow sensor equipment;
sub with full-opening valve on floor, drill pipe connection.

8. Testing, Logging and Coring Program:

Samples: Surface casing to TD.

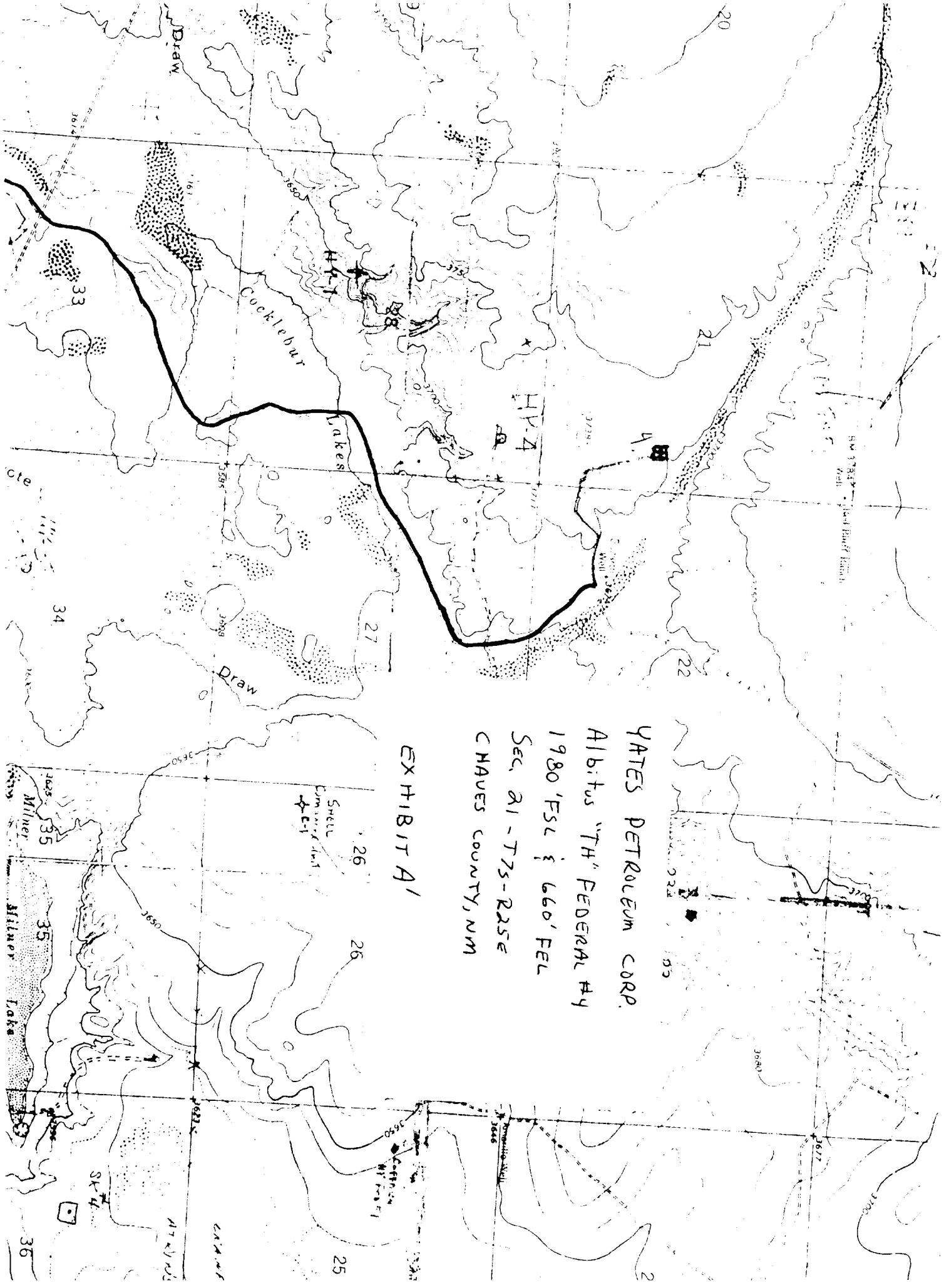
DST's: As warranted

Coring: As warranted

Logging: CNL-FDC TD to casing w/GR-CNL to surface & DLL from TD to casing

9. No abnormal pressures or temperatures are anticipated.

10. Anticipated starting date: As soon as possible after approval.



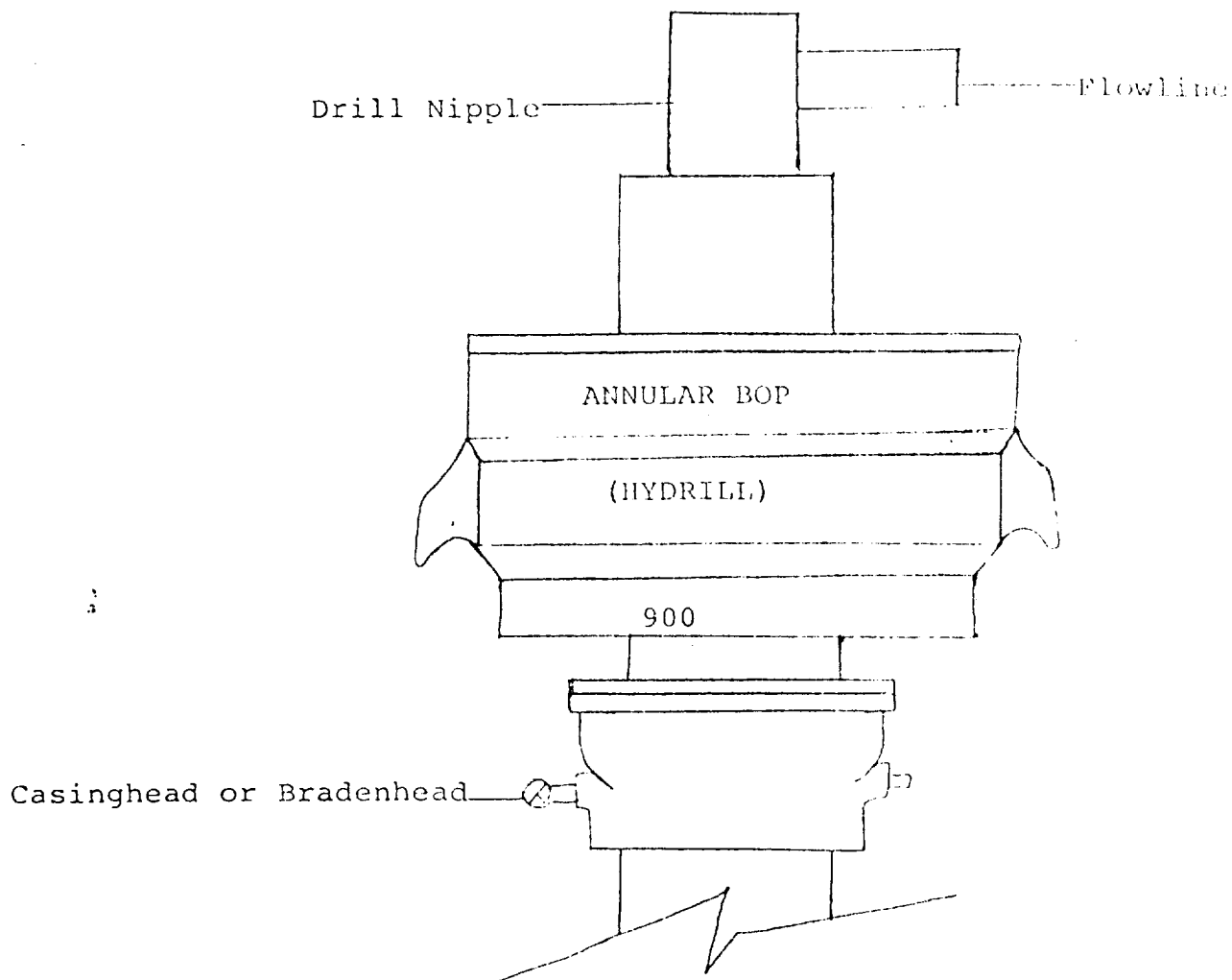
YATES PETROLEUM CORP.
ALBITUS "TH" FEDERAL #4
1980 FSL & 660' FEL
SEC. 21-T7S-R2SE
CHAVES COUNTY, NM

EXHIBIT A

Small
Copper
Drill
HP-1

Sk 4

CHAVES
COUNTY



THE FOLLOWING CONSTITUTE MINIMUM BLOWOUT PREVENTER REQUIREMENTS

1. All preventers to be hydraulically operated with secondary manual controls installed prior to drilling out from under casing.
2. All connections from operating manifolds to preventers to be all steel. Hole or tube a minimum of one inch in diameter.
3. The available closing pressure shall be at least 15% in excess of that required with sufficient volume to operate the BOP's.
4. All connections to and from preventer to have a pressure rating equivalent to that of the BOP's.
5. Hole must be kept filled on trips below intermediate casing.

30-005-61544

