

NO. OF COPIES RECEIVED	6
DISTRIBUTION	
SANTA FE	1
FILE	1
U.S.G.S.	2
LAND OFFICE	1
OPERATOR	1

NEW MEXICO OIL CONSERVATION COMMISSION

RECEIVED

JUL 6 1982

O. C. D.  
ARTESIA, OFFICE

Form C-101  
Revised 1-1-65

5A. Indicate Type of Lease

STATE ☒ FEE ☐

5. State Oil & Gas Lease No.

LG-6679

APPLICATION FOR PERMIT TO DRILL, DEEPEN, OR PLUG BACK

1a. Type of Work

DRILL ☒

DEEPEN ☐

PLUG BACK ☐

b. Type of Well

OIL WELL ☐

GAS WELL ☒

OTHER

SINGLE ZONE ☒

MULTIPLE ZONE ☐

2. Name of Operator

MESA PETROLEUM CO.

3. Address of Operator

1000 VAUGHN BUILDING/MIDLAND, TEXAS 79703-4493

4. Location of Well

UNIT LETTER L LOCATED 1980 FEET FROM THE SOUTH LINE

AND 660 FEET FROM THE WEST LINE OF SEC. 21 TWP. 7S RGE. 23E NMPM

7. Unit Agreement Name

8. Farm or Lease Name

IRIS STATE

9. Well No.

2

10. Field and Pool, or Wildcat

UNDESIGNATED ABO

12. County

CHAVES

19. Proposed Depth

3200'

19A. Formation

ABO

20. Rotary or C.T.

ROTARY

21. Elevations (Show whether DF, RT, etc.)

3932'

21A. Kind & Status Plug. Bond

BLANKET

21B. Drilling Contractor

DUAL DRILLING

22. Approx. Date Work will start

JULY 19, 1982

23.

PROPOSED CASING AND CEMENT PROGRAM

SIZE OF HOLE	SIZE OF CASING	WEIGHT PER FOOT	SETTING DEPTH	SACKS OF CEMENT	EST. TOP
12 1/4"	8 5/8"	24#	1400'	700/300	SURFACE
7 7/8"	4 1/2"	10.5#	3200'	300	COVER ABO

Propose to drill 12 1/4" hole to approximately 1400' to set 8 5/8" surface casing and cement to surface. Will nipple up ram type BOP's and reduce hole to 7 7/8" to drill to total depth. Drilling medium will be air, foam, or mud as required. After log evaluation, 4 1/2" casing may be run and cemented with sufficient kinds and amounts to isolate and seal off any fresh water, oil or gas zones encountered.

Operator's Gas Sales are dedicated.

APPROVAL VALID FOR 180 DAYS  
PERMIT EXPIRES 1-9-83  
UNLESS DRILLING UNDERWAY

XC: NMOCD (6), TLS, CEN RCDS, ACCTG, MEC, LAND, ROSWELL, REM, FILE (PARTNERS)

IN ABOVE SPACE DESCRIBE PROPOSED PROGRAM; IF PROPOSAL IS TO DEEPEN OR PLUG BACK, GIVE DATA ON PRESENT PRODUCTIVE ZONE AND PROPOSED NEW PRODUCTIVE ZONE. GIVE BLOWOUT PREVENTER PROGRAM, IF ANY.

I hereby certify that the information above is true and complete to the best of my knowledge and belief.

Signed Michael P. Hovister

Title OPERATIONS MANAGER

Date 7-2-82

(This space for State Use)

APPROVED BY W. A. Grossett

TITLE SUPERVISOR, DISTRICT II

JUL 9 1982

CONDITIONS OF APPROVAL, IF ANY:

Notify N.M.O.C.G. in sufficient time to witness cementing the 8 5/8" casing

Postcard ID-1  
NL Book  
API Book  
7-9-82

All distances must be from the outer boundaries of the Section.

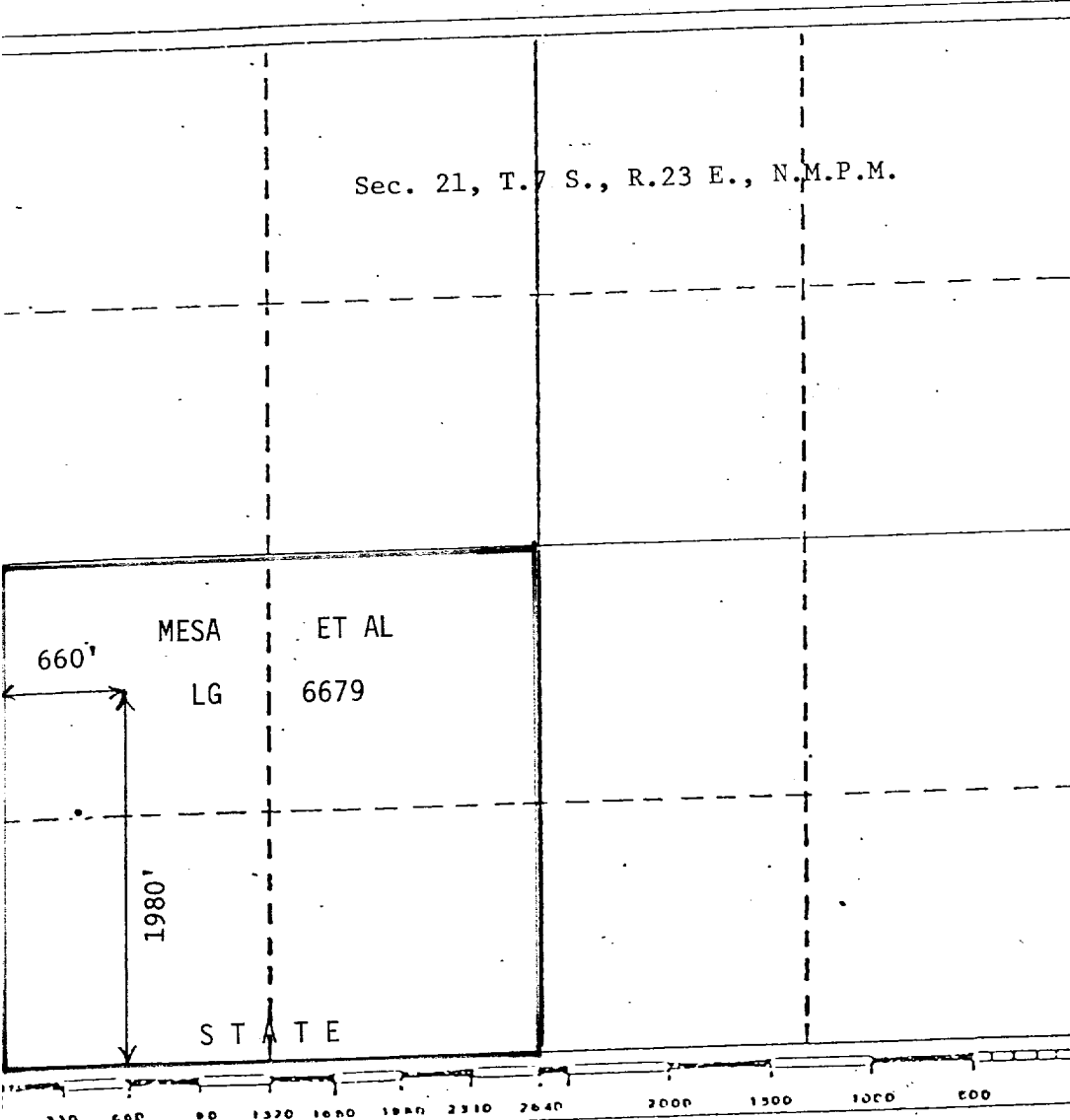
Lessor Mesa Petroleum Co.		Lease Iris State		Well No. 2
Well Letter L	Section 21	Township 7 S.	Range 23 E.	County Chaves
Actual Postage Location of Well: 1980 feet from the South line and 660 feet from the West line				
Ground Level Elev. 3932	Producing Formation ABO	Pool UNDESIGNATED	Dedicated Acreage: SW/4 160 Acres	

- Outline the acreage dedicated to the subject well by colored pencil or hatchure marks on the plat below.
- If more than one lease is dedicated to the well, outline each and identify the ownership thereof (both as to working interest and royalty).
- If more than one lease of different ownership is dedicated to the well, have the interests of all owners been consolidated by communitization, unitization, force-pooling, etc?

☐ Yes ☐ No If answer is "yes," type of consolidation \_\_\_\_\_

If answer is "no," list the owners and tract descriptions which have actually been consolidated. (Use reverse side of this form if necessary.) \_\_\_\_\_

No allowable will be assigned to the well until all interests have been consolidated (by communitization, unitization, forced-pooling, or otherwise) or until a non-standard unit, eliminating such interests, has been approved by the Division.



# CERTIFICATION

I hereby certify that the information contained herein is true and complete to the best of my knowledge and belief.

*Michael P. Houston*

Name  
MICHAEL P. HOUSTON  
Position  
OPERATIONS MANAGER  
Company  
MESA PETROLEUM CO.

Date  
JULY 2, 1982

I hereby certify that the well location shown on this plat was plotted from field notes of actual surveys made by me or under my supervision, and that the same is true and correct to the best of my knowledge and belief.

JOHN D. JAQUESS  
NEW MEXICO  
Registered Professional Engineer  
and/or Land Surveyor  
6290  
John D. Jaquess, P.E. & L.S.  
Certificate No. 6290