

STATE OF NEW MEXICO
ENERGY AND MINERALS DEPARTMENT

OFFICE OF CONSERVATION DIVISION

P. O. BOX 2088
SANTA FE, NEW MEXICO 87501

30-005-61717
Form C-101
Revised 10-1-78

| | |
|------------------------|---|
| NO. OF COPIES RECEIVED | 5 |
| DISTRIBUTION | |
| SANTA FE | 1 |
| FILE | 1 |
| U.S.G.S. | 2 |
| LAND OFFICE | |
| OPERATOR | 1 |

RECEIVED

JUL 22 1982

O. C. D.

5A. Indicate Type of Lease
STATE ☐ FEE ☒

5. State Oil & Gas Lease No.

APPLICATION FOR PERMIT TO DRILL, DEEPEN, OR PLUG BACK

1a. Type of Work

DRILL ☒

DEEPEN ☐

PLUG BACK ☐

b. Type of Well

OIL WELL ☐

GAS WELL ☒

OTHER

SINGLE ZONE ☒

MULTIPLE ZONE ☐

2. Name of Operator

Wallace Oil & Gas, Inc.

3. Address of Operator

50 Penn Place, Suite 850, Okla. City, OK 73118

4. Location of Well

UNIT LETTER M LOCATED 660 FEET FROM THE N LINE

AND 660 FEET FROM THE W LINE OF SEC. 3 TWP. 11S RGE. 25E NMPM

7. Unit Agreement Name

8. Farm or Lease Name

BRITT

9. Well No.

1

10. Field and Pool, or Wildcat

Wildcat

12. County

Chaves

19. Proposed Depth

4525'

19A. Formation

ABO

20. Rotary or C.T.

Rotary

21. Elevations, (show whether DF, KT, etc.)

3460'

21A. Kind & Status Plug. Bond

One Well Plugging

21B. Drilling Contractor

Tex-Mex Drilling Co.

22. Approx. Date Work will start

7/22/82

23.

PROPOSED CASING AND CEMENT PROGRAM

| SIZE OF HOLE | SIZE OF CASING | WEIGHT PER FOOT | SETTING DEPTH | SACKS OF CEMENT | EST. TOP |
|--------------|----------------|-----------------|---------------|-----------------|----------|
| 15 1/4" | 13 3/8" | 48# | 450' | 420 | Surface |
| 12 1/4" | 8 5/8" | 24# | 1200' | 750 | Surface |
| 7 7/8" | 4 1/2" | 10.5# | 4500' | 250 | 3100' |

Proposed to drill approximately 4525' to test Abo formation.
If productive, Casing will be set and Completion attempted.

Estimated Tops: San Andres 700' Tubb 3310'
Gloretta 1810' Abo 4150'

Mud Program-to drill with Fresh water to 50' above Abo formation, and will mud up,
Water loss 10cc or less with 30 to 40 Mud Vis.

BOP Program-BOP will be installed on 8 5/8" casing, and will be tested daily.

APPROVAL VALID FOR 180 DAYS
PERMIT EXPIRES 1-23-83
UNLESS DRILLING UNDERWAY

*BOP (Attachement, Shaffer 39)

ABOVE SPACE DESCRIBE PROPOSED PROGRAM: IF PROPOSAL IS TO DEEPEN OR PLUG BACK, GIVE DATA ON PRESENT PRODUCTIVE ZONE AND PROPOSED NEW PRODUCTIVE ZONE. GIVE BLOWOUT PREVENTER PROGRAM, IF ANY.

I hereby certify that the information above is true and complete to the best of my knowledge and belief.

Signed Pamela J. Shaffer Title Production Secretary Date July 19, 1982

(This space for State Use)

PROVED BY Mike Walker TITLE OIL AND GAS INSPECTOR DATE JUL 23 1982

CONDITIONS OF APPROVAL, IF ANY:

Minimum WOC time 8 hrs.

Cement must be circulated to
surface behind 13 3/8" casing

Notify N.M.O.C.C. in sufficient
time to witness cementing
the 8 5/8" casing

Posted
ID-1
API & BP
7-23-82

All distances must be from the outer boundaries of the Section.

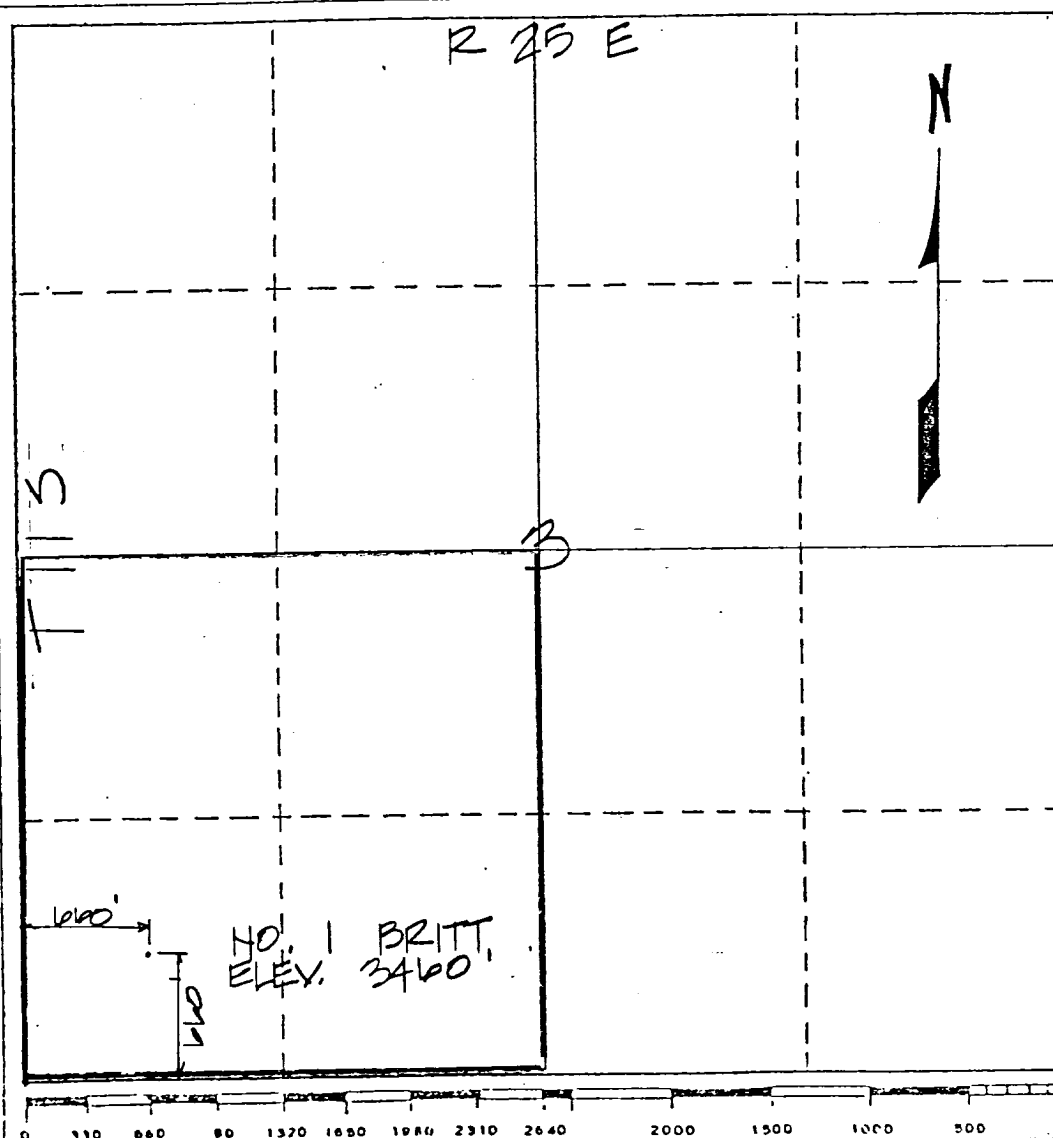
| | | | | | |
|---|----------------------------|------------------|---------------|---------------------------------|--|
| Operator Wallace Oil & Gas, Inc. | | Lease Britt | | Well No. 1 | |
| Unit Letter M | Section 3 | Township 11-S | Range 25-E | County Chaves | |
| Actual Footage Location of Well: 660 feet from the SOUTH line and 660 feet from the WEST line SW/4 | | | | | |
| Ground Level Elev. 3460' | Producing Formation Abo | | Pool Britt | Dedicated Acreage: 160 Acres | |

1. Outline the acreage dedicated to the subject well by colored pencil or hatchure marks on the plat below.
2. If more than one lease is dedicated to the well, outline each and identify the ownership thereof (both as to working interest and royalty).
3. If more than one lease of different ownership is dedicated to the well, have the interests of all owners been consolidated by communitization, unitization, force-pooling, etc?

☐ Yes ☐ No If answer is "yes," type of consolidation _____

If answer is "no," list the owners and tract descriptions which have actually been consolidated. (Use reverse side of this form if necessary.) _____

No allowable will be assigned to the well until all interests have been consolidated (by communitization, unitization, forced-pooling, or otherwise) or until a non-standard unit, eliminating such interests, has been approved by the Division.



CERTIFICATION

I hereby certify that the information contained herein is true and complete to the best of my knowledge and belief.

Name
Pamela S. Garrett
Position
Production Secretary
Company
Wallace Oil & Gas, Inc.

Date
July 19, 1982

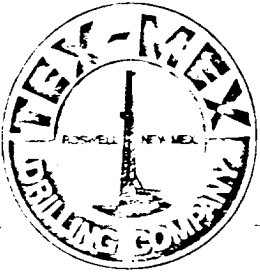
I hereby certify that the well location shown on this plat was obtained from field notes of actual surveys made by me or under my supervision and to the best of my knowledge and belief.

25 June 1982

Date Surveyed

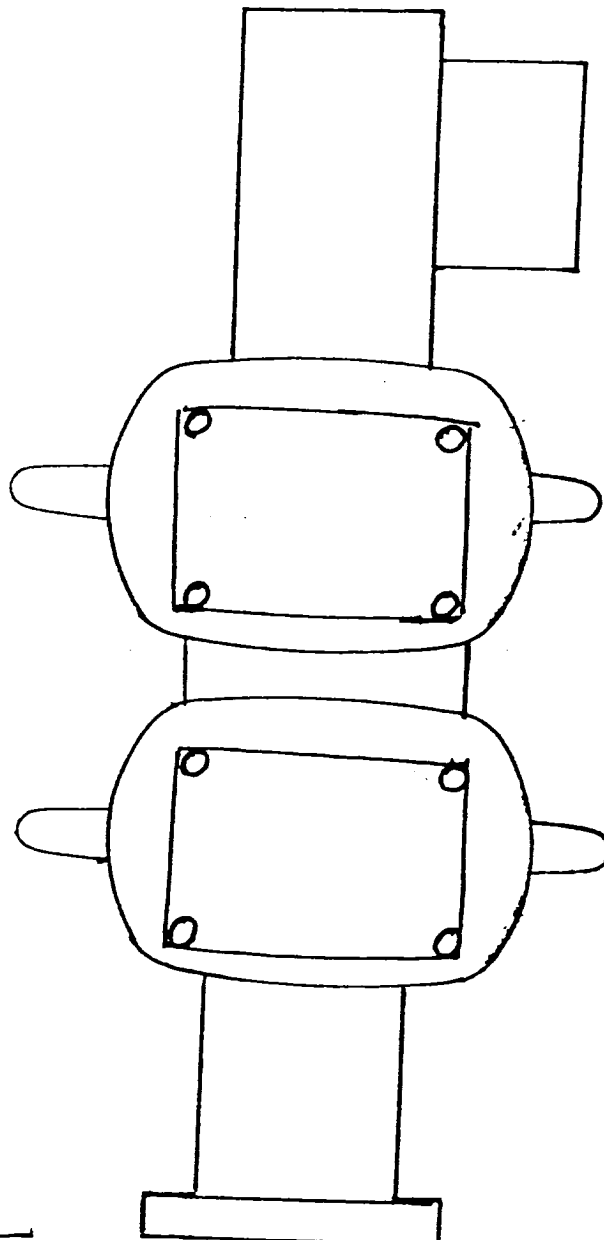
Registered Professional Engineer
and/or Land Surveyor
David C. Clausen, PLS
N.M. License 6547
Certificate No.

TEX -MEX DRILLING COMPANY



P.O. BOX 3759
ABILENE, TEXAS 79604
PHONE 915/677-9121
Myrle Greathouse

Rt 2 BOX ~~12~~ 441
~~822-5555~~
ROSWELL, N. MEX. 88201
PHONE 505-622-0022
Monte Cowser



Shaffer 39

B.O.P.