

UNITED STATES
DEPARTMENT OF THE INTERIOR
GEOLOGICAL SURVEY

APPLICATION FOR PERMIT TO DRILL, DEEPEN, OR PLUG BACK

1a. TYPE OF WORK

DRILL ☒

DEEPEN ☐

PLUG BACK ☐

b. TYPE OF WELL

OIL WELL ☒

GAS WELL ☐

OTHER ☐

SINGLE ZONE ☐

MULTIPLE ZONE ☐

2. NAME OF OPERATOR

Stevens Operating Corporation

RECEIVED

3. ADDRESS OF OPERATOR

P. O. Box 2408, Roswell, New Mexico 88001

4. LOCATION OF WELL (Report location clearly and in accordance with any State requirements.)

At surface

330' FNL, 2310' FEL, Sec 23, T7S, R26E

At proposed prod. zone

same as above

14. DISTANCE IN MILES AND DIRECTION FROM NEAREST TOWN OR POST OFFICE*

25.6 air miles north east of Roswell, NM

15. DISTANCE FROM PROPOSED* LOCATION TO NEAREST PROPERTY OR LEASE LINE, FT.

330'

16. NO. OF ACRES IN LEASE

1280

18. DISTANCE FROM PROPOSED LOCATION* TO NEAREST WELL, DRILLING, COMPLETED, OR APPLIED FOR, ON THIS LEASE, FT.

N/A

19. PROPOSED DEPTH

1900'

21. ELEVATIONS (Show whether DF, RT, GR, etc.)

3803.0 GR

23.

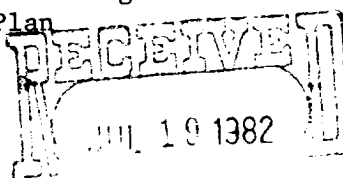
PROPOSED CASING AND CEMENTING PROGRAM

SIZE OF HOLE	SIZE OF CASING	WEIGHT PER FOOT	SETTING DEPTH
11"	8 5/8"	24.0#	300'
7 7/8"	4 1/2"	9.5#	1900'

Well will be drilled to a depth of 1900' and all potential zones will be evaluated. If commercial production is indicated, well will be perforated and stimulated.

Attached are:

1. Well Location & Dedication Plat
2. Supplemental Drilling Data
3. Surface Use Plan



IN ABOVE SPACE DESCRIBE PROPOSED PROGRAM: If proposal is to deepen or plug back, give data on present production zone. If proposal is to drill or deepen directionally, give pertinent data on subsurface locations and measured stratigraphic column, if any.

24.

SIGNED

Pat Thompson

TITLE

Production Coordinator

(This space for Federal or State office use)

PERMIT NO.

(Orig. Sgd.) GEORGE H. STEWART

APPROVAL DATE

APPROVED BY

TITLE

CONDITIONS OF APPROVAL, IF ANY:

Pat Thompson
APR 10 1982
2-30-82

NEW MEXICO OIL CONSERVATION COMMISSION
WELL LOCATION AND ACREAGE DEDICATION PLAT

Form C-102
Supersedes C-128
Effective 1-1-65

All distances must be from the outer boundaries of the Section

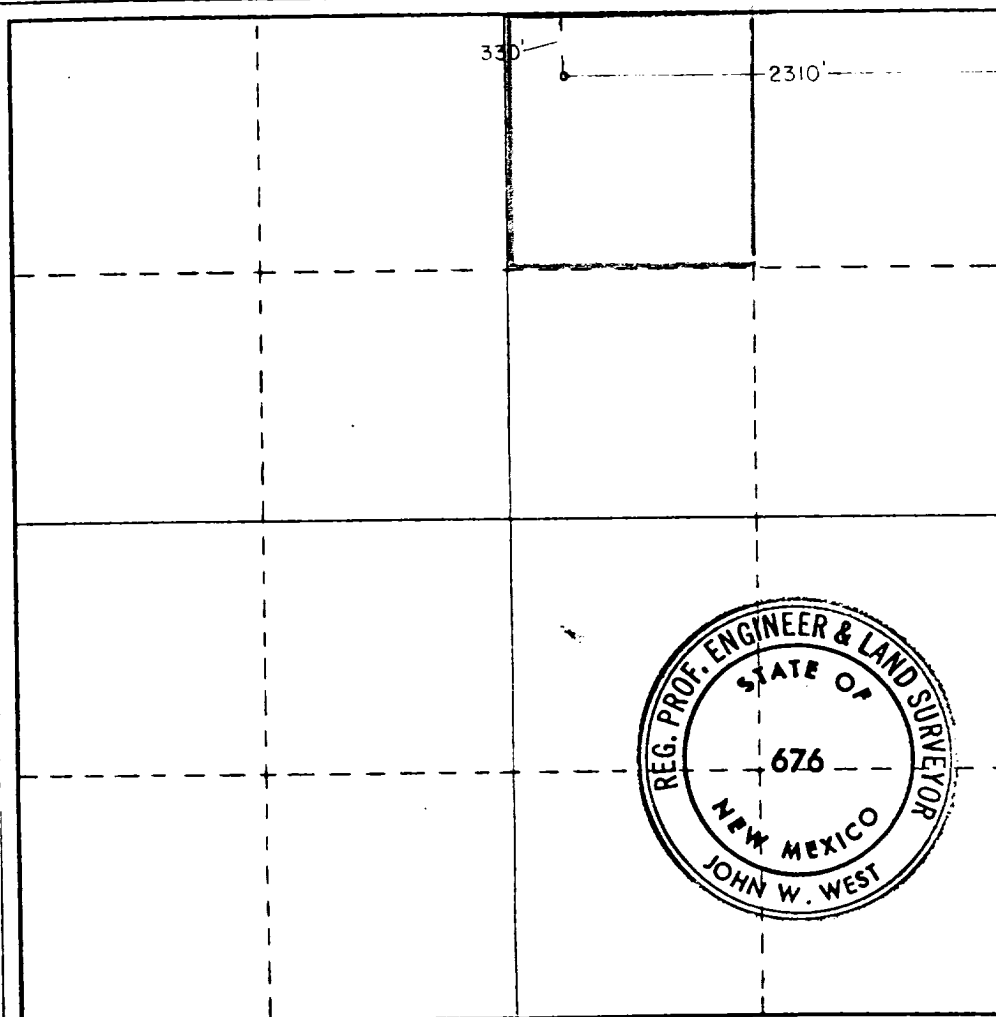
Operator STEVENS OPERATING COMPANY		Lease HANAGAN FEDERAL		Well No. 3
Unit Letter B	Section 23	Township 7 SOUTH	Range 26 EAST	County CHAVES
Actual Footage Location of Well: 330 feet from the NORTH line and 2310 feet from the EAST line				
Ground Level Elev. 3803.0	Producing Formation San Andres	Pool Wildcat - SA	Dedicated Acreage: 40 Acres	

1. Outline the acreage dedicated to the subject well by colored pencil or hachure marks on the plat below.
2. If more than one lease is dedicated to the well, outline each and identify the ownership thereof (both as to working interest and royalty).
3. If more than one lease of different ownership is dedicated to the well, have the interests of all owners been consolidated by communitization, unitization, force-pooling, etc?

☐ Yes ☐ No If answer is "yes," type of consolidation _____

If answer is "no," list the owners and tract descriptions which have actually been consolidated. (Use reverse side of this form if necessary.) _____

No allowable will be assigned to the well until all interests have been consolidated (by communitization, unitization, forced-pooling, or otherwise) or until a non-standard unit, eliminating such interests, has been approved by the Commission.



CERTIFICATION

I hereby certify that the information contained herein is true and complete to the best of my knowledge and belief.

Pat Thompson

Name

Pat Thompson

Position

Production Coordinator

Company

Stevens Operating Corporation

Date

July 19, 1982

I hereby certify that the well location shown on this plat was plotted from field notes of actual surveys made by me or under my supervision, and that the same is true and correct to the best of my knowledge and belief.

Date Surveyed

7-15-82

Registered Professional Engineer and/or Land Surveyor

John W. West

Certificate No. **JOHN W. WEST 676**
PATRICK A. ROMERO 6863
Ronald J. Eidson 3239

0 330 660 990 1320 1650 1980 2310 2640 2970 3300 3630 3960 4290 4620 4950 5280 5610 5940 6270 6600 6930 7260 7590 7920 8250 8580 8910 9240 9570 9900

SUPPLEMENTAL DRILLING DATA

STEVENS OPERATING CORPORATION
WELL #3 HANAGAN FEDERAL
330' FNL & 2310' FEL, SEC 23-7S-26E
CHAVES COUNTY, NEW MEXICO

1. SURFACE FORMATION: Permian (Artesia Group).

2. ESTIMATED TOPS OF GEOLOGIC MARKERS:

Queen	435'
San Andres	885'

3. ANTICIPATED POROSITY ZONES:

Water	150- 200'
Oil	1300- 1500'

4. CASING DESIGN:

<u>Size</u>	<u>Csg</u>	<u>Interval</u>	<u>Weight</u>	<u>Class</u>	<u>Joint</u>	<u>Condition</u>
11"	8 5/8"	0 - 900'	24.0#	K-55	STC	New
7 7/8"	4 1/2"	0 - 1900'	9.5#	K-55	STC	New

5. SURFACE CONTROL EQUIPMENT: A double ram-type preventer (900 series).
A sketch of BOP stack is attached.

6. CIRCULATING MEDIUM:

0 - 300	Fresh water with gel added if needed for viscosity.
300 - TD	Salt water conditioned as necessary for control of viscosity and water loss.

7. AUXILIARY EQUIPMENT: Drill string safety valve.

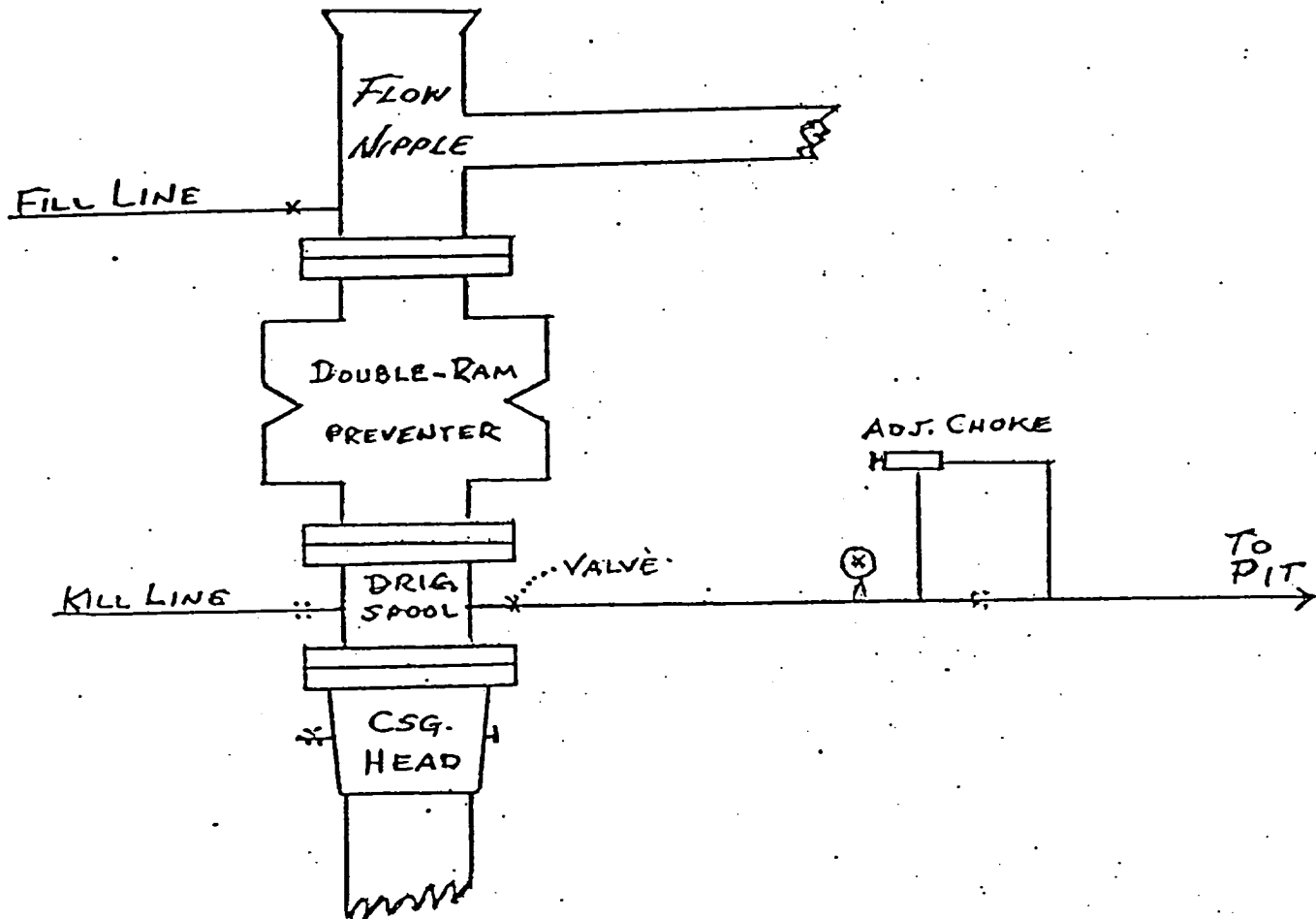
8. TESTING, LOGGING AND CORING PROGRAMS: No coring or DST's are planned.
Compensated Neutron-Formation Density s/Gamma Ray Log, 0-TD; Dual
Laterolog, shoe to TD.

9. ABNORMAL PRESSURES, TEMPERATURES OR GASES: None anticipated.

10. ANTICIPATED DATES: It is planned that operations will commence about
July 20, 1982. Duration of drilling and completion operations should be
10 to 20 days.

B O P & CHOKE MANIFOLD

SERIES 900



SDD EXHIBIT "A"

STEVENS OPERATING CORP.
WELL #3 HANAGAN FEDERAL
330' FNL & 2310' FEL SEC. 23-7S-26E

