

NO. OF COPIES RECEIVED	3
DISTRIBUTION	
SANTA FE	1
FILL	1
U.S.G.S.	
LAND OFFICE	
OPERATOR	

JUL 26 1982

APPLICATION FOR PERMIT TO DRILL, DEEPEN, OR PLUG BACK

Type of Work **ARTESIA, OFFICE**

Type of Well **DRILL** ☒ **DEEPEN** ☐ **PLUG BACK** ☐

OIL WELL ☐ **GAS WELL** ☒ **OTHER** ☐ **SINGLE ZONE** ☐ **MULTIPLE ZONE** ☐

Name of Operator **Yates Petroleum Corporation** ✓

Address of Operator **207 S. 4th, Artesia, New Mexico 88210** ✓

Location of Well **UNIT LETTER E LOCATED 1980 FEET FROM THE North LINE**

660 FEET FROM THE West LINE OF SEC. 10 TWP. 6S RGE. 26E NMPM

5A. Indicate Type of Lease STATE <input type="checkbox"/> FEE <input checked="" type="checkbox"/>
5. State Oil & Gas Lease No.
7. Unit Agreement Name
8. Farm or Lease Name Andrew "UU"
9. Well No. 1
10. Field and Pool, or Wildcat Undes. Pecos Slope
12. County Chaves

19. Proposed Depth 4300'	19A. Formation Abo	20. Rotary or C.T. Rotary
21A. Kind & Status Plug. Bond Blanket	21B. Drilling Contractor not determined	22. Approx. Date Work will start ASAP

PROPOSED CASING AND CEMENT PROGRAM

SIZE OF HOLE	SIZE OF CASING	WEIGHT PER FOOT	SETTING DEPTH	SACKS OF CEMENT	EST. TOP
14 3/4"	10 3/4"	40.5# J-55	Appr. 950'	630 sx	circulated
7 7/8"	4 1/2"	9.5#	TD	350 sx	

APPROVAL VALID FOR 180 DAYS
PERMIT EXPIRES 1-27-83
UNLESS DRILLING UNDERWAY

We propose to drill and test the Abo and intermediate formations. Approximately 950' of surface casing will be set and cement circulated to shut off gravel and caving. If needed (lost circulation) 8 5/8" intermediate casing will be run to 1500' and cemented with enough cement calculated to tie back into the surface casing. Temperature survey will be run to determine cement top. If commercial, production casing will be run and cemented with adequate cover, perforate, and stimulate as needed for production.

MUD PROGRAM: FW gel and LCM to 950', Brine to 3500', Brine & KCL water to TD.

BOP PROGRAM: BOP's will be installed at the offset and tested daily.

GAS NOT DEDICATED.

BOVE SPACE DESCRIBE PROPOSED PROGRAM: IF PROPOSAL IS TO DEEPEN OR PLUG BACK, GIVE DATA ON PRESENT PRODUCTIVE ZONE AND PROPOSED NEW PRODUCTIVE ZONE. GIVE BLOWOUT PREVENTER PROGRAM, IF ANY.

by certify that the information above is true and complete to the best of my knowledge and belief.

Kew Beardsley Title **Regulatory Coordinator** Date **7/15/82**

(This space for State Use)

ROVED BY **W.H. Wilson** TITLE **OIL AND GAS INSPECTOR** DATE **JUL 27 1982**

DITIONS OF APPROVAL, IF ANY

Notify N.M.O.C.C. in

time to witness cementing

the casing

Posted ID 7
API 8 BK
7-30-82

NEW MEXICO OIL CONSERVATION COMMISSION
WELL LOCATION AND ACREAGE DEDICATION PLAT

Form C-102
Supersedes C-128
Effective 1-1-65

All distances must be from the outer boundaries of the Section.

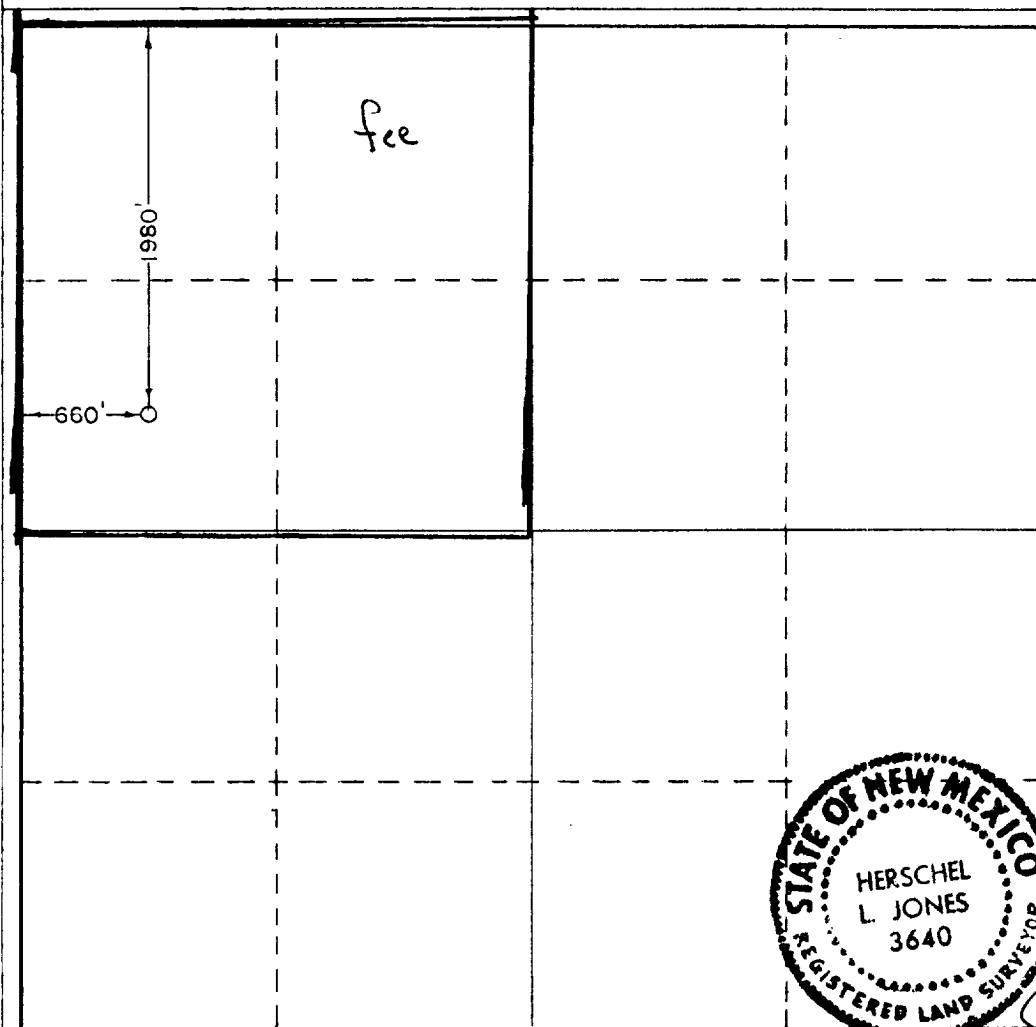
Operator YATES PETROLEUM CORPORATION			Lease Andrew "UU"		Well No. 1
Unit Letter E	Section 10	Township 6 South	Range 26 East	County Chaves	
Actual Footage Location of Well: 1980 feet from the North line and 660 feet from the West line					
Ground Level Elev. 3636.4'	Producing Formation Abo		Pool Undes. Pecos Slope Abo		Dedicated Acreage: 160 Acres

1. Outline the acreage dedicated to the subject well by colored pencil or hatchure marks on the plat below.
2. If more than one lease is dedicated to the well, outline each and identify the ownership thereof (both as to working interest and royalty).
3. If more than one lease of different ownership is dedicated to the well, have the interests of all owners been consolidated by communitization, unitization, force-pooling, etc?

☐ Yes ☐ No If answer is "yes," type of consolidation _____

If answer is "no," list the owners and tract descriptions which have actually been consolidated. (Use reverse side of this form if necessary.) _____

No allowable will be assigned to the well until all interests have been consolidated (by communitization, unitization, forced-pooling, or otherwise) or until a non-standard unit, eliminating such interests, has been approved by the Commission.



CERTIFICATION

I hereby certify that the information contained herein is true and complete to the best of my knowledge and belief.

Ken Beardemphl

Name

Ken Beardemphl

Position

Regulatory Coordinator

Company

Yates Petroleum Corp.

Date

7/26/82

I hereby certify that the well location shown on this plat was plotted from field notes of actual surveys made by me or under my supervision, and that the same is true and correct to the best of my knowledge and belief.

Date Surveyed

July 16, 1982

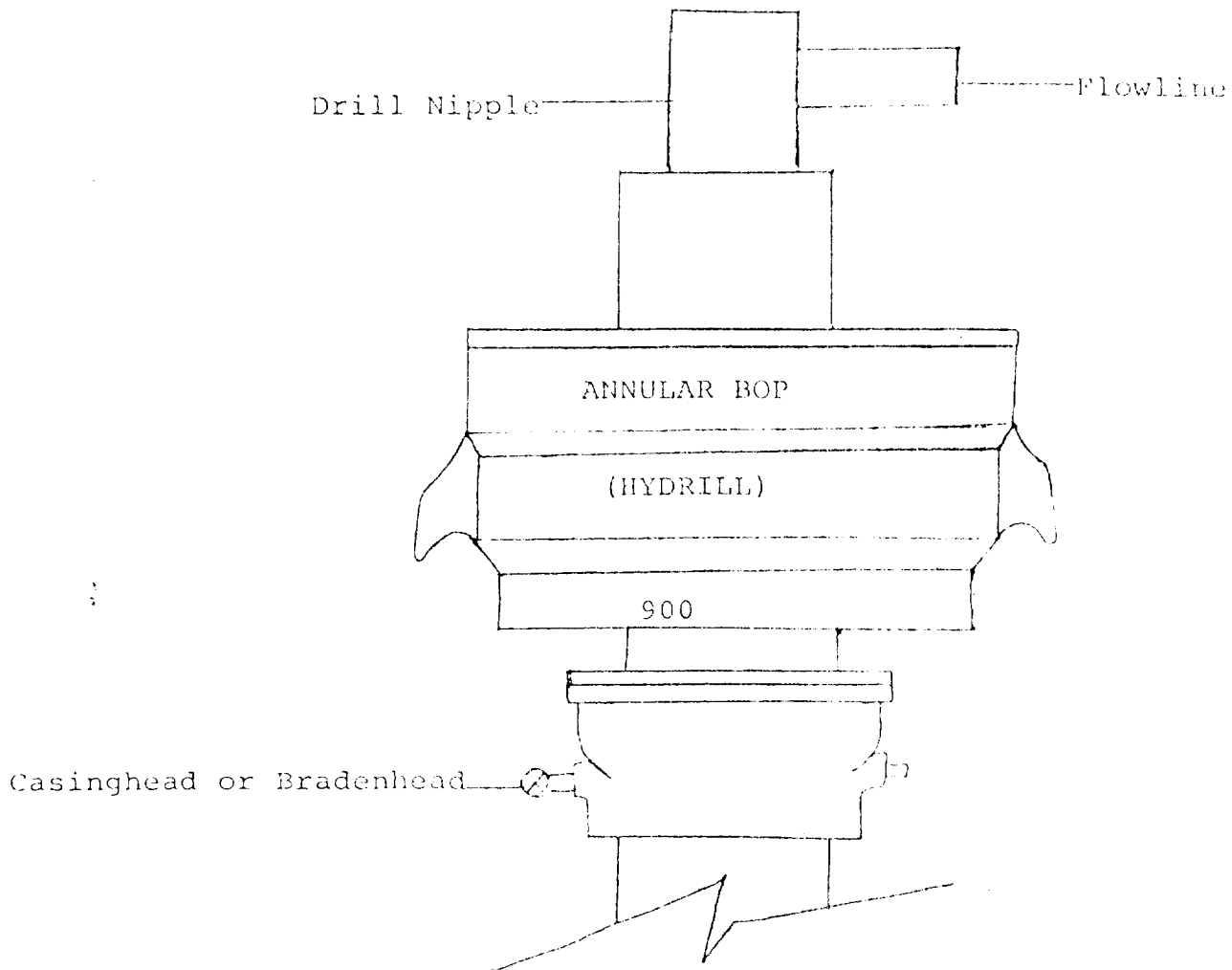
Registered Professional Engineer and/or Land Surveyor

Herschel L. Jones

Certificate No.

3640

0 330 660 990 1320 1650 1980 2310 2640 2000 1500 1000 500 0



THE FOLLOWING CONSTITUTE MINIMUM BLOWOUT PREVENTER REQUIREMENTS

1. All preventers to be hydraulically operated with secondary manual controls installed prior to drilling out from under casing.
2. All connections from operating manifolds to preventers to be all steel. Hole or tube a minimum of one inch in diameter.
3. The available closing pressure shall be at least 15% in excess of that required with sufficient volume to operate the BOP's.
4. All connections to and from preventer to have a pressure rating equivalent to that of the BOP's.
5. Hole must be kept filled on trips below intermediate casing.