

NEW MEXICO OIL CONSERVATION COMMISSION
WELL LOCATION AND ACREAGE DEDICATION PLAT

Form C-102
Supersedes C-128
Effective 1-1-65

All distances must be from the outer boundaries of the Section.

JUL 2 1982

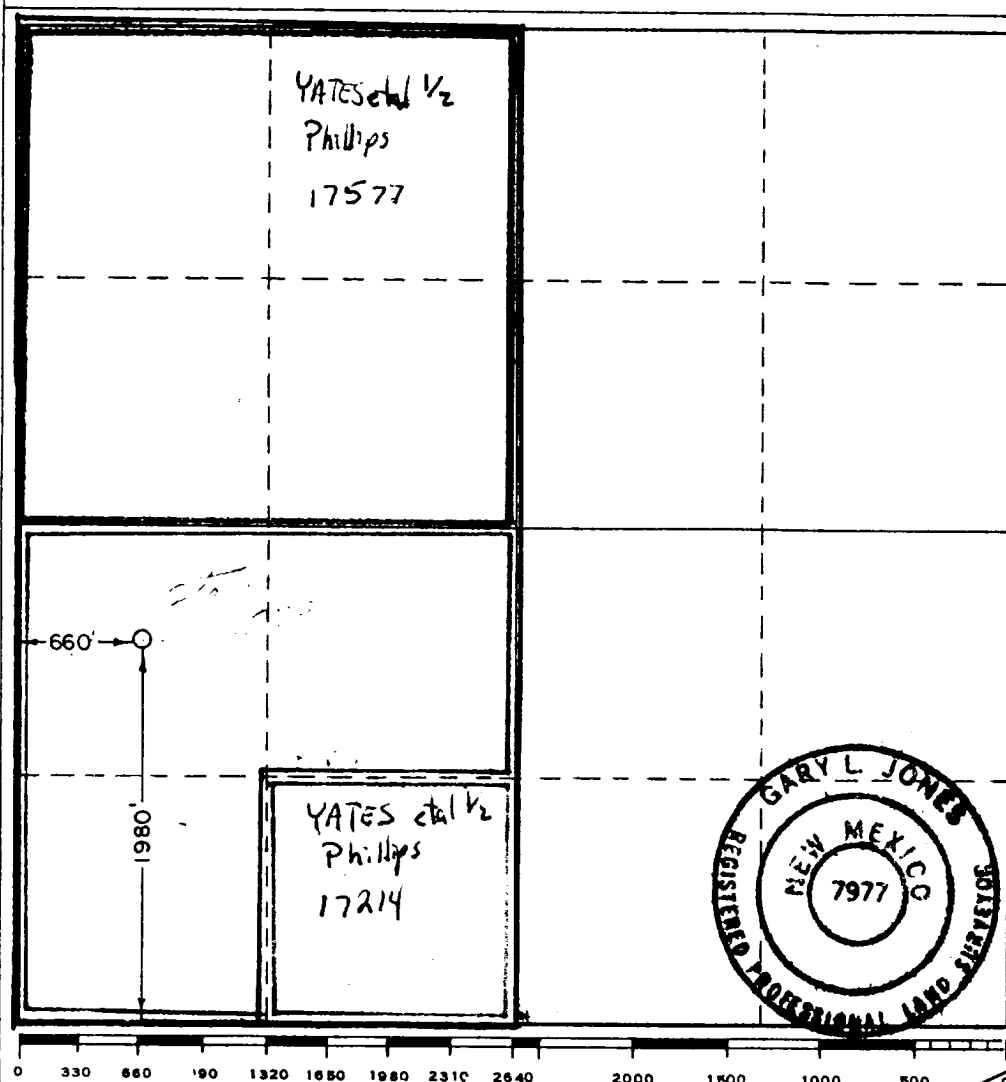
Operator YATES PETROLEUM CORPORATION			Lease Long Arroyo "OD" State			Well No. 2
Unit Letter 1	Section 14	Township 14 South	Range 27 East	County ARTESIA, OFFICE Chaves		
Actual Footage Location of Well: 1980 feet from the South line and 660 feet from the West line						
Ground Level Elev. 3436.9'	Producing Formation Morrow		Pool Undes. Morrow	Dedicated Acreage: 320 Acres		

1. Outline the acreage dedicated to the subject well by colored pencil or hachure marks on the plat below.
2. If more than one lease is dedicated to the well, outline each and identify the ownership thereof (both as to working interest and royalty).
3. If more than one lease of different ownership is dedicated to the well, have the interests of all owners been consolidated by communitization, unitization, force-pooling, etc?

☐ Yes ☐ No If answer is "yes," type of consolidation _____

If answer is "no," list the owners and tract descriptions which have actually been consolidated. (Use reverse side of this form if necessary.) _____

No allowable will be assigned to the well until all interests have been consolidated (by communitization, unitization, forced-pooling, or otherwise) or until a non-standard unit, eliminating such interests, has been approved by the Commission.



CERTIFICATION

I hereby certify that the information contained herein is true and complete to the best of my knowledge and belief.

Name

Ken Beardemphl

Position

Regulatory Coordinator

Company

Yates Petroleum Corp.

Date

7/28/82

I hereby certify that the well location shown on this plat was plotted from field notes of actual surveys made by me or under my supervision, and that the same is true and correct to the best of my knowledge and belief.

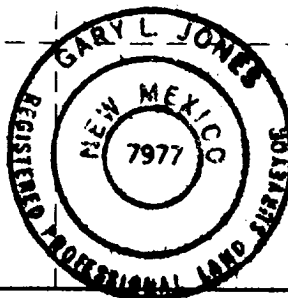
Date Surveyed

July 6, 1982

Registered Professional Engineer and/or Land Surveyor

Certificate No.

7977



Rotating head if necessary
Fill up Line

ROTATING
BOP
2000 psi

Flowline

ANNULAR BOP

(Hydrill)

Exhibit B

900

PIPE RAMS

900

Shaffer 10" Series 900

Hydraulically Operated B.O.P.'s

BLIND RAMS

900

Check Valve

Steel
Valve

inch Kill
Line

4" Inch Line

900

Choke
Manifo

Choke
Manifo

Drillinghead or Bradenhead

THE FOLLOWING CONSTITUTE MINIMUM BLOWOUT PREVENTER REQUIREMENTS

1. All preventers to be hydraulically operated with secondary manual control installed prior to drilling out from under casing.
2. Choke outlet to be a minimum of 4" diameter.
3. Kill line to be of all steel construction of 2" minimum diameter.
4. All connections from operating manifold to preventers to be all steel. hole or tube a minimum of one inch in diameter.
5. The available closing pressure shall be at least 15% in excess of that required with sufficient volume to operate the B.O.P.'s.
6. All connections to and from preventer to have a pressure rating equivalent to that of the B.O.P.'s.
7. Inside blowout preventer to be available on rig floor.
8. Operating controls located a safe distance from the rig floor.
9. Hole must be kept filled on trips below intermediate casing. Operator not responsible for blowouts resulting from not keeping hole full.
10. D. P. float must be installed and used below zone of first gas intrusion.