

30-005-4137

NEW MEXICO OIL CONSERVATION **RECEIVED**Form O-101  
Revised 1-1-82

AUG 20 1982

O. C. D.  
ARTESIA, OFFICE

STATE	5	
FILE	1	✓
U.S.G.S.	2	
LAND OFFICE		
OPERATOR	1	

## APPLICATION FOR PERMIT TO DRILL, DEEPEN, OR PLUG BACK

1a. Type of Work DRILL <input checked="" type="checkbox"/> DEEPEN <input type="checkbox"/> PLUG BACK <input type="checkbox"/>		7. Unit Agreement Number
b. Type of Well OIL WELL <input checked="" type="checkbox"/> GAS WELL <input type="checkbox"/> OTHER <input type="checkbox"/>		8. Farm or Lease Name CX Plains
c. Name of Operator Cibola Energy Corporation ✓		9. Well No. 2
d. Address of Operator P.O. Box 1668, Albuquerque, New Mexico 87103		10. Field and Sect. or Wildcat Race Track San Andres
e. Location of Well UNIT LETTER I LOCATED 1980 FEET FROM THE South LINE AND 660 FEET FROM THE East LINE OF SEC. 19 TWP. 10S RGE. 28E NMDP		11. County Chaves
12. Proposed Depth 2300		13. Formation San Andres
14. Elevation (Show whether B.T., H.T., etc.) 3765.2 Gr.		15. Rotary or C.T. Rotary
21A. Kind & Status Prod. Zone Statewide		22. Approx. Date Work will start September 1, 1982
21B. Drilling Contractor Yucca Drilling		

23. PROPOSED CASING AND CEMENT PROGRAM					
SIZE OF HOLE	SIZE OF CASING	WEIGHT PER FOOT	SETTING DEPTH	SACKS OF CEMENT	EST. TOP
10"	8 5/8"	23#	300'	200 Sacks	Surface
7 7/8"	4 1/2"	9.5#	2300'	300 Sacks	

We plan to drill a 10" hole to 300' and set 8 5/8" 23# casing, a texas pattern guide shoe and insert float. Cementing with 200 sacks Class C Cement. WOC 18 hours. Then drill an 7 7/8" hole to TD (2300'). Casing and cement program will be decided after reviewing the logs.

APPROVAL VALID FOR 150 DAYS  
PERMIT EXPIRES 2-24-83  
UNLESS DRILLING UNDERWAY

IN ABOVE SPACE DESCRIBE PROPOSED PROGRAM: IF PROPOSAL IS TO DEEPEN OR PLUG BACK, GIVE DATA ON PRESENT PRODUCTIVE ZONE AND PROPOSED NEW PRODUCTIVE ZONE. GIVE BLOWOUT PREVENTER PROGRAM, IF ANY.

I hereby certify that the information above is true and complete to the best of my knowledge and belief.

Signed [Signature] Title Operations Manager Date August 18, 1982

(This space for State Use)

APPROVED BY [Signature] TITLE OIL AND GAS INSPECTOR DATE AUG 24 1982

CONDITIONS OF APPROVAL, IF ANY:

**MEXICO OIL CONSERVATION COMMISSION  
WELL LOCATION AND ACREAGE DEDICATION PLAT**

Form C-102  
Supersedes C-128  
Effective 1-1-65

All distances must be from the outer boundaries of the Section.

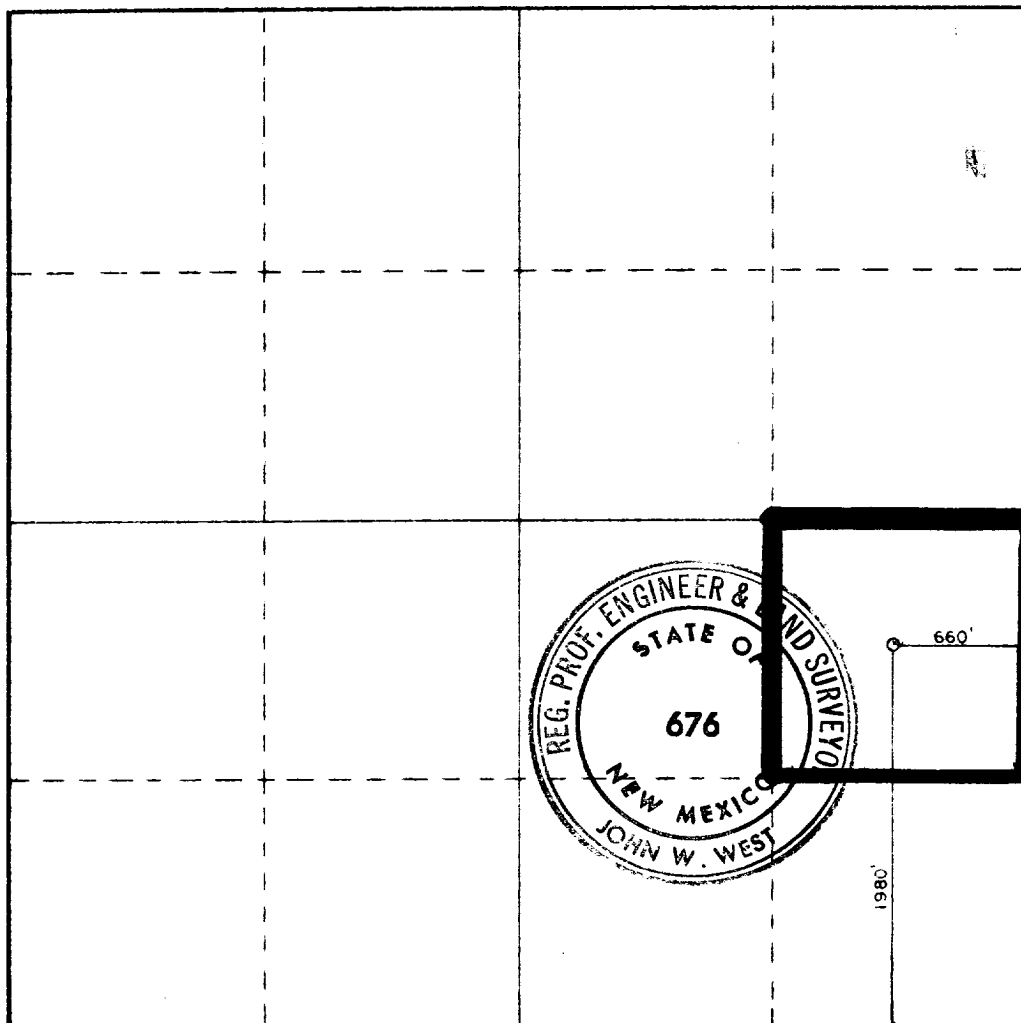
Operator <b>Cibola Energy Corporation</b> <del>Gornado Exploration Corp.</del>			Lease <b>C.X. Plains</b>		Well No. <b>2</b>
Unit Letter <b>I</b>	Section <b>19</b>	Township <b>10 South</b>	Range <b>28 East</b>	County <b>Chaves</b>	
Actual Footage Location of Well: <b>1980</b> feet from the <b>South</b> line and <b>660</b> feet from the <b>East</b> line					
Ground Level Elev. <b>3765.2'</b>	Producing Formation <b>Slaughter San Andres</b>		Pool <i>Rancho</i> <b>San Andres</b>	Dedicated Acreage: <b>40</b> Acres	

1. Outline the acreage dedicated to the subject well by colored pencil or hachure marks on the plat below.
2. If more than one lease is dedicated to the well, outline each and identify the ownership thereof (both as to working interest and royalty).
3. If more than one lease of different ownership is dedicated to the well, have the interests of all owners been consolidated by communitization, unitization, force-pooling, etc?

☐ Yes ☒ No If answer is "yes," type of consolidation \_\_\_\_\_

If answer is "no," list the owners and tract descriptions which have actually been consolidated. (Use reverse side of this form if necessary.) All leases held by operator and participating parties

No allowable will be assigned to the well until all interests have been consolidated (by communitization, unitization, forced-pooling, or otherwise) or until a non-standard unit, eliminating such interests, has been approved by the Commission.



**CERTIFICATION**

I hereby certify that the information contained herein is true and complete to the best of my knowledge and belief.

*Anita Vigil*

Name  
**Anita Vigil**  
Position  
**Drilling Secretary**  
Company  
**Cibola Energy Corporation**  
Date  
**August 16, 1982**

I hereby certify that the well location shown on this plat was plotted from field notes of actual surveys made by me or under my supervision, and that the same is true and correct to the best of my knowledge and belief.

Date Surveyed  
**11-21-80**  
Registered Professional Engineer and/or Land Surveyor

*John W. West*  
Certificate No. **JOHN W. WEST 676**  
**PATRICK A. ROMERO 6663**  
**Ronald J. Eidson 3239**

