

UNITED STATES
DEPARTMENT OF THE INTERIOR
GEOLOGICAL SURVEY

APPLICATION FOR PERMIT TO DRILL, DEEPEN, OR PLUG BACK

1a. TYPE OF WORK

DRILL ☒DEEPEN ☐PLUG BACK ☐

b. TYPE OF WELL

OIL
WELL ☐GAS
WELL ☒

OTHER

SINGLE
ZONE ☒MULTIPLE
ZONE ☐

2. NAME OF OPERATOR

JACK GRYNBERG AND ASSOCIATES

3. ADDRESS OF OPERATOR

1050 17th Street, Suite 1950, Denver, CO 80265

4. LOCATION OF WELL (Report location clearly and in accordance with any State requirements.)*

At surface 1980' FSL & 1980' FWL

At proposed prod. zone 1980' FSL & 1980' FWL

14. DISTANCE IN MILES AND DIRECTION FROM NEAREST TOWN OR POST OFFICE*

30 Miles NNE of Roswell, New Mexico

15. DISTANCE FROM PROPOSED*

LOCATION TO NEAREST
PROPERTY OR LEASE LINE, FT.
(Also to nearest drig. unit line, if any)

660'

18. DISTANCE FROM PROPOSED LOCATION*

TO NEAREST WELL, DRILLING, COMPLETED,
OR APPLIED FOR, ON THIS LEASE, FT.

1320'

16. NO. OF ACRES IN LEASE

360

19. PROPOSED DEPTH

4200'

17. NO. OF ACRES ASSIGNED
TO THIS WELL

40

20. ROTARY OR CABLE TOOLS

Rotary

21. ELEVATIONS (Show whether DF, RT, GR, etc.)

3932' GR

22. APPROX. DATE WORK WILL START*

8/16/82

23.

PROPOSED CASING AND CEMENTING PROGRAM

SIZE OF HOLE	SIZE OF CASING	WEIGHT PER FOOT	SETTING DEPTH	QUANTITY OF CEMENT
14-3/4"	10-3/4"	32.75	900'	Good returns to surface
7-7/8"	4-1/2"	10.75	4200'	1000' above top of pay

1. Spud well, drill 14-3/4" hole to 900', run 10-3/4" surface casing.
2. Drill 7-7/8 hole to 4200', checking B.O.P. daily.
3. Run tests and logs as necessary.
4. Run 4-1/2" production casing to 4200', if warranted.
5. Perforate, and stimulate as needed.

In the event that circulation is lost while drilling 7-7/8" hole and intermediate casing is needed, the hole will be reamed and 1500' of 7-7/8" casing will be set.

B.O.P. diagram attached.
Gas is not dedicated.

RECEIVED

AUG 24 1982

Booted Val 1
API + NS back
8-26-82

IN ABOVE SPACE DESCRIBE PROPOSED PROGRAM: If proposal is to deepen or plug back, give data on present productive zone and proposed new productive zone. If proposal is to drill or deepen directionally, give pertinent data on surface location and measured and true vertical depths. Give blowout preventer program, if any.

24.

SIGNED

CHRIS PENNELS

TITLE

Agent

DATE

8/2/82

(This space for Federal or State office use)

PERMIT NO.

(Orig. Sgd.) GEORGE H. STEWART

APPROVAL DATE

APPROVED BY

AUG 19 1982

TITLE

DATE

CONDITIONS OF APPROVAL, IF ANY:

JAMES A. GILLHAM
DISTRICT SUPERVISOR

*See Instructions On Reverse Side

All distances must be from the outer boundaries of the Section.

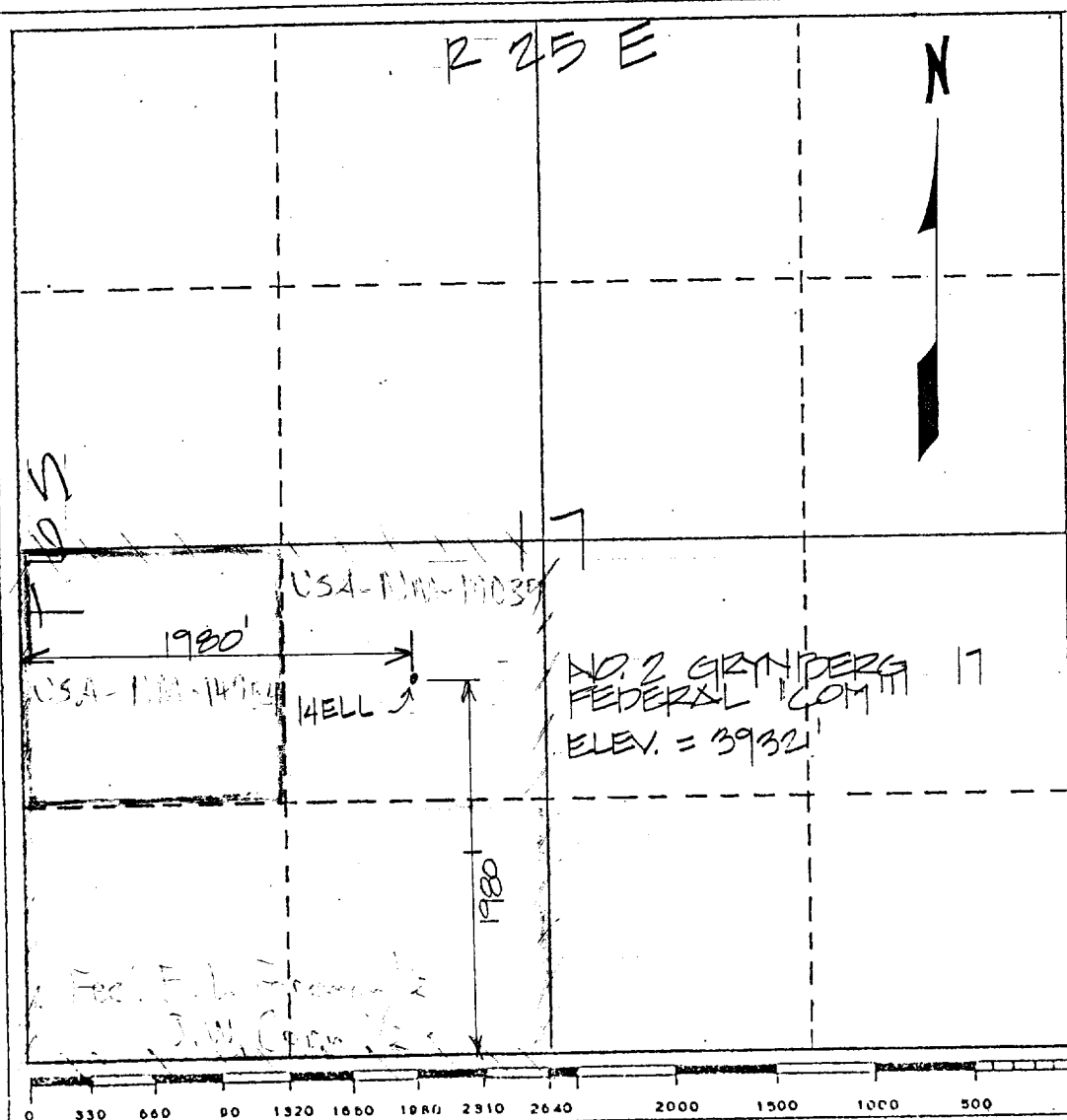
Operator Jack J. Grynberg		Lease No. 2 Grynberg 17 Federal "COM"		Well No. No. 2
Unit Letter K	Section 17	Township 6-S	Range 25-E	County Chaves
Actual Footage Location of Well:				
1980 feet from the SOUTH line and		1980 feet from the WEST line		
Ground Level Elev. 3932'	Producing Formation ABO	Pool Undesignated ABO	Dedicated Acreage: 160 Acres	

1. Outline the acreage dedicated to the subject well by colored pencil or hatchure marks on the plat below.
2. If more than one lease is dedicated to the well, outline each and identify the ownership thereof (both as to working interest and royalty).
3. If more than one lease of different ownership is dedicated to the well, have the interests of all owners been consolidated by communitization, unitization, force-pooling, etc?

☒ Yes ☐ No If answer is "yes," type of consolidation Forced-pooling

If answer is "no," list the owners and tract descriptions which have actually been consolidated. (Use reverse side of this form if necessary.)

No allowable will be assigned to the well until all interests have been consolidated (by communitization, unitization, forced-pooling, or otherwise) or until a non-standard unit, eliminating such interests, has been approved by the Division.



CERTIFICATION

I hereby certify that the information contained herein is true and complete to the best of my knowledge and belief.

Name
Agent
Position
Jack J. Grynberg
Company
8/2/82
Date

I hereby certify that the well location shown on this plat was obtained from field notes of actual survey made by me or under my supervision, and that the same are true and correct to the best of my knowledge and belief.

27 July 1982
Date Surveyed

Registered Professional Engineer and/or Land Surveyor
David C. Clausen, P.L.S.
N.M. License No. 6547
Certificate No.

JACK GRYNBERG AND ASSOCIATES
 #2 Grynberg 17 Federal "Com"
 NESW, Section 17, T56S R 25 E
 Chaves County, New Mexico

ATTACHMENT I

Percentage Interests Of Parties Under Agreement:

NAME	ACRES	WORKING INTEREST
FRED POOL DRILLING, INC.		11.25%
PLAINS RADIO BROADCASTING		25.00%
MERCURY EXPLORATION		9.75%
1 TEX-MEX DRILLING CO.	80 Acres	1.5 %
JAMES LUSK		1.00%
JACK CARGILL		1.00%
KEMP MCMILLAN		0.5 %
2 JACK J. GRYNBERG	40 Acres	25.00%
3 MTS, LIMITED PARTNERSHIP	40 Acres	12.5 %
CORONA OIL COMPANY		12.5 %

Leasehold Interest of Parties to Operating Agreement:

- Lessor: J.W. Corn, E.L. Foreman
 Present Lessee: Plains Radio, Fred Pool Drilling, et al

Expiration Date of Lease: October 25, 1982, October 9, 1982 (HBP)
 Serial No. of Lease: Fee
 Description: Township 6 South - Range 25 East
 (Limited to portion in Section 17: S/2SW/4
 Contract Area)
- Lessor: United States
 Present Lessee: Celeste C. Grynberg
 Expiration Date of Lease: December 1, 1982 (HBP)
 Serial No. of Lease: USA-NM-17037
 Description: Township 6 South - Range 25 East
 (Limited to portion in Section 17: NE/4SW/4
 Contract Area)
- Lessor: United States
 Present Lessee: a. MTS, Limited Partnership (50%)
 b. Corona Oil Company (50%)

Expiration Date of Lease:
 Serial No. of Lease: USA-NM-14754
 Description: Township 6 South - Range 25 East
 (Limited to portion in Section 17: NW/4SW/4
 Contract Area)

TEN POINT COMPLIANCE PROGRAM
Attachment to Form 9-133C, Application for Permit to Drill

JACK GRYNBERG AND ASSOCIATES
#2 Grynberg 17 Federal "Com"
1980' FSL & 1980' FWL
Section 17, T 6 S - R 25 E
Chaves County, New Mexico

1. Geologic Surface Formation

Sandy residuum

2. Estimated Tops of Important Geologic Marker

San Andres	525'
Glorieta	1450'
ABO	3650'
TD	4200'

3. Estimated Depths of Anticipated Water, Oil, Gas or Other Minerals

Gas 3650 - 4200

4. Proposed Casing Program

<u>HOLE SIZE</u>	<u>CASING SIZE</u>	<u>INTERVAL</u>	<u>GRADE</u>	<u>WT./FT.</u>	<u>NEW OR USED</u>
14 3/4"	10 3/4"	0-900	H-40	32.75	new
7 7/8"	4 1/2"	900-4200	J-55	10.75	new
9 1/4" (Contingency)	7 7/8"	900-1500	K-55	26.40	new

5. Operator's Minimum Specifications For Pressure Control

Exhibit "A" is a schematic diagram of the blowout preventor equipment. The BOP's will be hydraulically tested to the full working pressure after nipping up and after any use under pressure. Pipe rams will be operationally checked each 24 hour period, as will blind rams each time pipe is pulled out of the hole.

6. Type and Characteristic of Proposed Circulating Mediums

Adequate stocks of sorptive agents will be on site to handle possible spills of fuel and oil on the surface. Heavier muds will be on location to be added if pressure requires.

<u>INTERVAL</u>	<u>TYPE</u>	<u>WEIGHT #/GAL</u>	<u>VISC.-SEC./QT.</u>	<u>FLUID LOSS-CC</u>
0-900	native mud	-----	-----	-----
900-3200	native mud	-----	-----	-----
3200-salt base, 4-5% diesel fuel		10.2	32-40	20-30CC Wtr

7. Auxiliary Equipment

Kelly cock, a float will be used at the bit, pit level indicators and flow sensor equipment, sub with full-opening valve on floor, drill pipe connection.

8. Testing, Logging, and Coring Program

- A. DST's as warranted.
- B. The logging program will consist of a CNL-FDC and Dual Lateral Log-MSFL.
- C. No coring is anticipated.
- D. Stimulation procedures will be determined after evaluation of logs. If treatment is indicated, appropriate Sundry Notice will be submitted.

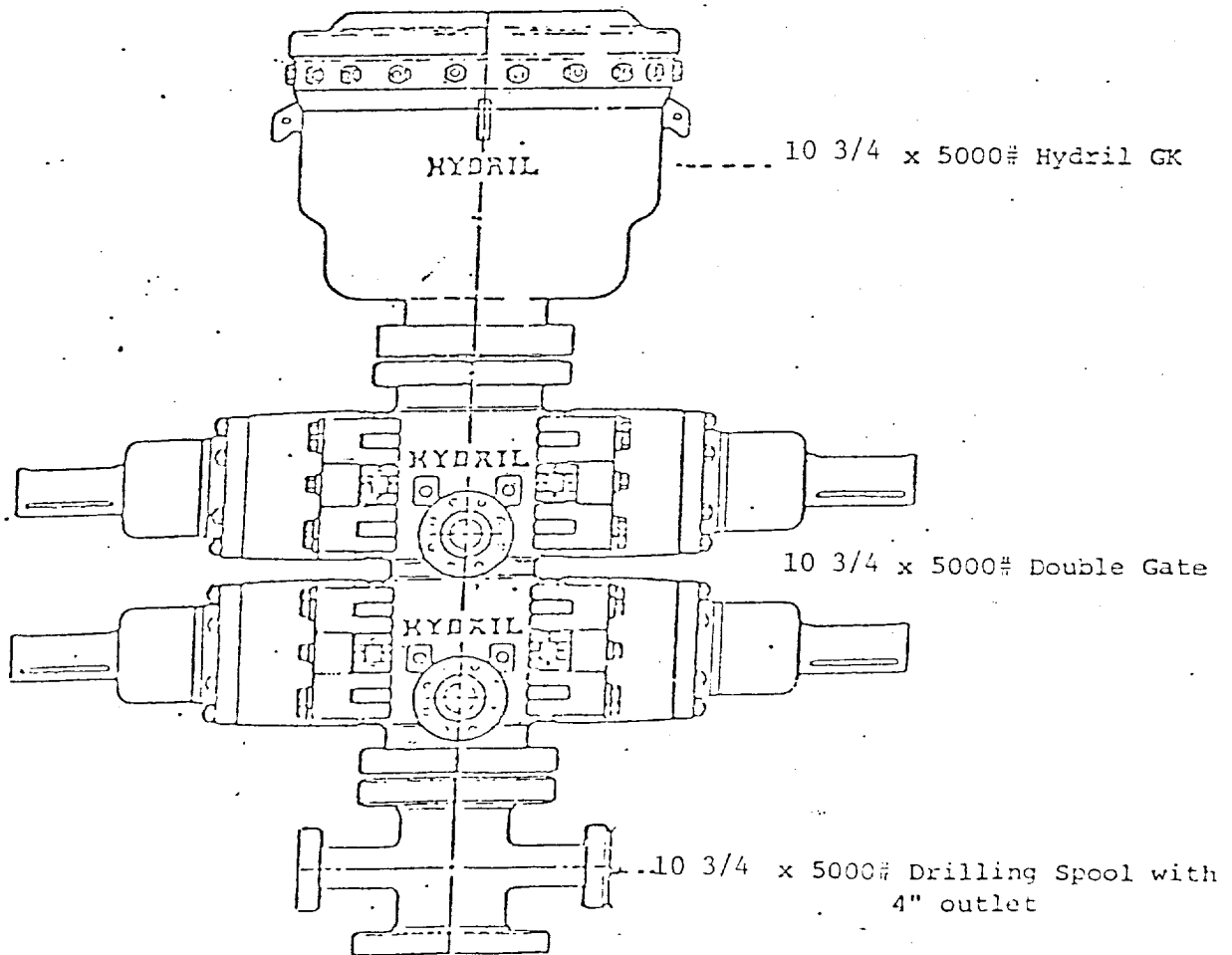
9. Anticipated Abnormal Pressures or Temperatures

No abnormal pressures or temperatures are anticipated.

10. The well will be spudded around August 16, 1982 or as soon as permit and surface use program are approved by the USGS and BLM.

Exhibit "A"
JACK GRYNBERG AND ASSOCIATES
#2 Grynberg 17 Federal "Com"
1980' FSL & 1980' FWL
Section 17, T6S-R25E
Chaves County, New Mexico

B.O.P. Stack



All items H₂S trimmed